
MOVEit DMZ Installation Guide



Copyright

©1991-2016 Ipswitch, Inc. All rights reserved.

This document, as well as the software described in it, is furnished under license and may be used or copied only in accordance with the terms of such license. Except as permitted by such license, no part of this publication may be reproduced, photocopied, stored on a retrieval system, or transmitted, in any form or by any means, electronic, mechanical, recording, or otherwise, without the express prior written consent of Ipswitch, Inc.

The content of this document is furnished for informational use only, is subject to change without notice, and should not be construed as a commitment by Ipswitch, Inc. While every effort has been made to assure the accuracy of the information contained herein, Ipswitch, Inc. assumes no responsibility for errors or omissions. Ipswitch, Inc., also assumes no liability for damages resulting from the use of the information contained in this document.

WS_FTP, the WS_FTP logos, Ipswitch, and the Ipswitch logo, MOVEit and the MOVEit logo, MessageWay and the MessageWay logo are trademarks of Ipswitch, Inc. Other products and their brands or company names, are or may be trademarks or registered trademarks, and are the property of their respective companies.

This document was published on Monday, January 25, 2016 at 13:23.

Contents

Overview	1
<hr/>	
The MOVEit DMZ Installation Program	1
System Requirements	3
Install Notes	5
Upgrade Notes	6
Install	7
<hr/>	
Install - Check Prerequisites	7
Install - Welcome Dialog	9
Install - License Agreement Dialog	9
Install - License File Dialog	10
Install - Setup Options Dialog	11
Install - Site Identity Dialog	12
Install - Ready to Install Dialog	14
Install - Installation Complete Dialog	15
Install - Installation Finished Dialog.....	16
Install - Creating an Organization	17
Install - Custom Setup	21
<hr/>	
Install - Custom Setup - Database Type.....	22
Install - Custom Setup - MySQL Database Name	23
Install - Custom Setup - MS SQL Server Credentials	24
Install - Custom Setup - Folders Dialog.....	25

Install - Custom Setup - Credentials Dialog 26

Install - Custom Setup - Web Site Dialog 28

Install - Custom Setup - Certificate Dialog 29

Upgrade 31

Upgrade - Check Prerequisites 31

Upgrade - Welcome 33

Upgrade - License File Dialog 34

Upgrade - Windows Services User Dialog 36

Upgrade - Ready to Upgrade Dialog 37

Upgrade - Complete Dialog 38

Repair - Repair Dialog 39

Modify - Modify Dialog 41

Uninstall/Remove - Remove Dialog 45

Unattended Install/Upgrade 47

Requirements 48

Setup.iss 48

MOVEitDMZ_Install.INI 49

Running the Unattended Install 51

Unattended Install Differences 52

MOVEit DMZ Unattended Upgrade or Repair 53

MOVEit DMZ Unattended Uninstall 53

SecauxNET Utility 55

Welcome	56
Command Line Arguments	56
Optimize Windows and Internet Explorer	57
Disable Unneeded Services and Applications	60
Apply Recommended Windows Security Settings	65
Apply Recommended NTFS Permissions	67
Rename Administrator Account	68
Configure IIS	69
Configure SMB (Server Message Block) Signing	70
Final Steps	71
Rolling Back Changes	73
Installing a Local Version of MOVEit Documentation	75

CHAPTER 1

Overview

In This Chapter

The MOVEit DMZ Installation Program.....	1
System Requirements	3
Install Notes	5
Upgrade Notes.....	6

The MOVEit DMZ Installation Program

The MOVEit DMZ installation program will install, upgrade, repair or uninstall MOVEit DMZ. Although a single package performs all these operations, not all choices will be available at all times.

- **Install** - The installation program will automatically attempt to install MOVEit DMZ when it detects that MOVEit DMZ is not present on the system.
- **Upgrade** - The installation program will automatically attempt to upgrade MOVEit DMZ when it detects that an older version of MOVEit DMZ is present on the system. New versions of MOVEit DMZ components and applications will be upgraded and database changes/conversions will automatically be implemented during the upgrade operation.
- **Repair** - This option will only be available if the installation detects that the most recent version of MOVEit DMZ is already present on the system. Various MOVEit DMZ components and applications will be replaced with known, good copies but no database changes/conversions will be performed during the repair operation.
- **Modify** - This option will only be available if the installation detects that the most recent version of MOVEit DMZ is already present on the system. Various MOVEit DMZ components and applications may be added or removed and database changes/conversions may be performed during the modify operation.
- **Uninstall/Remove** - This option will be available if the installation detects that the most recent version of MOVEit DMZ is already present on the system. It is also available from the "Add/Remove Programs" section of the Control Panel.

Before you perform an upgrade or repair option, use the included DMZBackup utility or a trusted backup tool to make a backup of your existing MOVEit DMZ configuration.

The installation program runs the SecAuxNET utility, which is used to prepare a Windows Server platform running the MOVEit DMZ application for deployment on Internet-exposed network segment. SecAuxNET includes several different options to optimize and lock down the server, including :

- Optimize Windows and Internet Explorer
- Disable unneeded services and applications
- Apply recommended NTFS Windows security settings
- Apply recommended NTFS permissions
- Enable FIPS compliance mode
- Rename Administrator account
- Configure IIS
- Configure SMB Signing

System Requirements

- **Supported Operating Systems for MOVEit DMZ and Modules**
 - Windows Server 2012 R2
 - Windows Server 2012
 - Windows Server 2008 R2 (64-bit English)
- **Supported Operating Systems for API, Xfer, EZ, and Wizard (end user computers)**
 - Windows 10 (32-bit and 64-bit)
 - Windows 8.1 (32-bit and 64-bit)
 - Windows 8 (32-bit and 64-bit)
 - Windows 7 (32-bit and 64-bit)
 - Java version of API and Wizard: Ubuntu 11.0.4, MacOS 10.7 and 10.8; Java 8
- **Supported Virtualization Environments: Support for virtual servers running on:**
 - VMware ESX (32-bit and 64-bit guest servers)
 - Microsoft Hyper-V (32-bit and 64-bit guest servers)
- **Supported Browsers (end user computers)**
 - Internet Explorer 9, 10, 11 (Windows only)
 - Microsoft Edge (Windows 10)
 - Mozilla Firefox (Windows, Mac and RedHat Linux)
 - Chrome (Windows only)
 - Safari (Mac only)
- **Supported Devices for MOVEit Mobile**
 - Apple - Phones: iPhone 5s, iPhone 5, iPhone 4s, iPhone 4g - iOS 6+, iPod Touch
 - Apple - Tablets: iPad 3/4, iPad2, iPad Mini
 - Android - Phones: Samsung Galaxy III/IV and Note II, Nexus 4, HTC One X+, HTC Droid DNA, Motorola Droid Razr Maxx HD, Motorola Moto X
 - Android - Tablets: Samsung Galaxy Tab 2/3 7" and Galaxy Tab 2/3 10", Samsung Galaxy Note 8, Nexus 5, Google Nexus 7" and Nexus 10"
 - Operating Systems: iOS 6+, iOS 7+, Android 4.0+, 4.1+, 4.2+, 4.3+, 4.4+

- **Support for Ad Hoc Transfer module Outlook plug-in (end user computers)**
 - Outlook: Outlook 2016, 2013 (English, German, French and Spanish), Outlook 2010 (32-bit and 64-bit English, German, French and Spanish), and Outlook 2007 (32-bit English, German, French and Spanish)
 - Mail or Exchange Server: Outlook plug-in is compatible with a variety of mail servers, such as Exchange Server 2013, Exchange Server 2010 (32-bit and 64-bit English and German), Exchange Server 2007 (32-bit English and German) or Ipswitch IMail 11 (using SMTP). When Outlook & Exchange are used together, Cached Exchange Mode will be supported but is not required
 - Operating System: Microsoft Windows 10, Microsoft Windows 8, Windows 7 (32-bit and 64-bit English and German) and Windows Vista (32-bit English, German, French and Spanish)
- **Microsoft Runtime Environment and Libraries:**
 - Microsoft ASP.NET (via IIS) and .NET 4.5.2 for MOVEit File Transfer (DMZ)
 - Sun Java J2SE 6.0 and 7.0 for MOVEit Wizard for Java
- **Supported Database:**
 - MySQL 5.5.47 (included)
 - Microsoft SQL Server 2014 Enterprise and Standard; Microsoft SQL Server 2012; Microsoft SQL Server 2008 R2; Microsoft SQL Server 2008
- **Hardware:** 2GB RAM, 250GB HD; Dual-core or faster processor. Production systems will benefit from additional resources, including faster, additional and multicore processors (single or dual quad-core processors are common), more RAM (4GB is common), hard drive capacity and speed (1TB SAS is common) and SSL accelerator hardware.

NOTE: MOVEit DMZ requires a dedicated server or virtual machine. Do not install MOVEit DMZ on a machine that has other applications installed.

Install Notes

- If you will use the MySQL database, any local non-MOVEit MySQL versions should be removed prior to installing MOVEit DMZ on the server. A "clean" server is recommended for installations. The MOVEit DMZ installation program will install the MySQL database.
- The MOVEit DMZ installation can activate "Roles and Features" for many of the prerequisites needed.
- When installing on Windows 2008 R2, if the install program does not find Microsoft .NET 4.5, you will be prompted to download and install this required software.
- The installation program will create exceptions in the Windows Firewall to permit connections to MOVEit DMZ FTP and SSH.
- MOVEit DMZ does not support remote access from IPv6 addresses (clients). To avoid any connection problems, we recommend that you disable IPv6 addresses on the MOVEit DMZ server. To disable IPv6, in Windows, open the Local Area Connection Properties for the network interface card, and make sure the Internet Protocol Version 6 (TCP/IPv6) property is not selected.
- Finally, in order to support installation on Domain Controllers, a network service called "File and Printer Sharing" must be installed on the system.

If any of these requirements have not yet been met, MOVEit DMZ prompts you to install/register them before you proceed with the installation.

Upgrade Notes

- MOVEit DMZ version 8.3 requires that you use a license file. If you are using a license key in your current installation, you must provide an 8.3-compatible license file during the upgrade process. If you are not sure whether you are using a license file, see the *knowledge base article* (<http://ipswitchft.force.com/kb/articles/FAQ/How-do-I-locate-my-current-MOVEit-DMZ-license-file-or-serial-number>).
- When upgrading on Windows 2008 R2, if the install program does not find Microsoft .NET 4.5, you will be prompted to download and install this required software.
- Upgrades generally require you to upgrade the underlying database. This can be time consuming if you have a large log table or if the drive is heavily fragmented. It's suggested that you defragment on a regular basis for performance and prior to an upgrade could be beneficial.
- Currently signed-on accounts might need to sign on again after an upgrade because their sessions might need to be rebuilt. MOVEit Central will automatically do this.
- The upgrade routine does not prompt you to run SecAux (security wizard) after the upgrade. Since this version of MOVEit DMZ has new hardening options in SecAux (see the Configure IIS and Configure SMB Signing sections), Ipswitch recommends that you run it manually after the upgrade process. Default SecAux location: C:\Program Files (x86)\MOVEit\SecAuxNET.exe. For more information, see the IIS and Configure SMB Signing.
- For Microsoft SQL Server databases, entering the 'sa' password is no longer be required during the upgrade. Instead, the upgrade process will use the normal database user account. As long as this user has db_owner permissions to the appropriate database (it will if the user was originally created by the MOVEit DMZ installer), this change in behavior will not disrupt the upgrade process.

CHAPTER 2

Install

This installation program will install MOVEit DMZ and its services on a computer running the *required Windows server software* (<http://www.ipswitchft.com/products/moveit/systemrequirements.aspx>).

In This Chapter

Install - Check Prerequisites	7
Install - Welcome Dialog	9
Install - License Agreement Dialog	9
Install - License File Dialog	10
Install - Setup Options Dialog	11
Install - Site Identity Dialog	12
Install - Ready to Install Dialog.....	14
Install - Installation Complete Dialog.....	15
Install - Installation Finished Dialog	16
Install - Creating an Organization	17

Install - Check Prerequisites

The installation program first checks for required software and displays a message if any of the required software is missing.

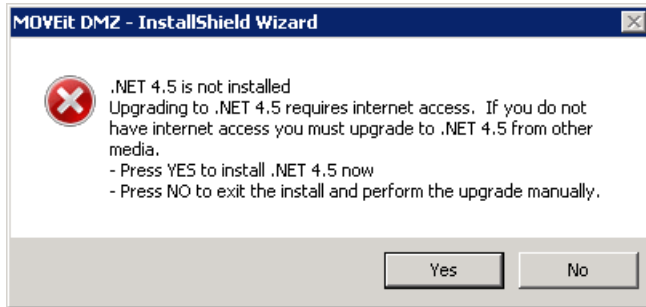
For complete list of requirements see *System Requirements* (on page 3).

Microsoft .NET 4.5

When installing on Windows 2012, Microsoft .NET 4.5 is already installed with the operating system.

When installing on Windows 2008 R2, if the install program does not find Microsoft .NET 4.5, you are prompted to download and install this required software.

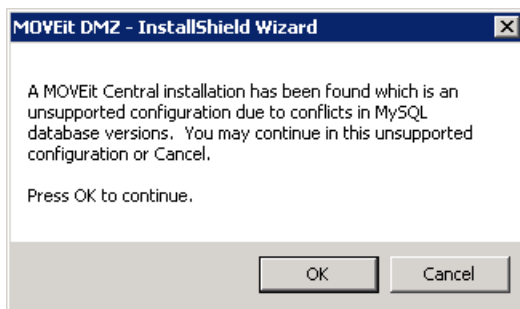
Note: you need internet connectivity for this step.



Click **Yes** to download and install the .NET 4.5 software. This can take several minutes to complete. When complete, the Welcome dialog opens.

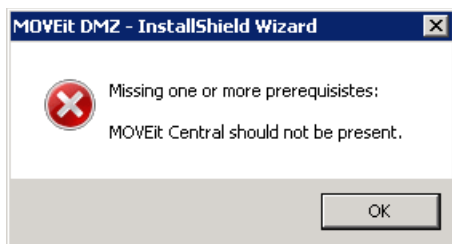
Unsupported Configuration: MOVEit Central installed on same machine

Running MOVEit DMZ and MOVEit Central on the same machine is not supported. If a MOVEit Central is installed on the machine, a message informs you of this:



We recommend you cancel the install, and either move your MOVEit Central installation or find another machine for the MOVEit DMZ installation.

When you click **Cancel**, a second dialog opens.



Click **OK** to close the installation program.

Install - Welcome Dialog

This installation program will install MOVEit DMZ and its services on a computer running the *required Windows server software* (<http://www.ipswitchft.com/products/moveit/systemrequirements.aspx>).

Some of the services which this program installs include:

- Web Application (HTTP - HTTPS)
- FTP Server (FTP - FTPS)
- SSH Server (SFTP)
- MySQL Database Server - **Express Setup**, the default selection, installs MySQL on the local machine. To use an existing Microsoft SQL Server database instead, select Custom Setup during installation.

A single copy of the installation can be used to install a fresh copy of MOVEit DMZ or upgrade an existing copy of MOVEit DMZ from a previous version.

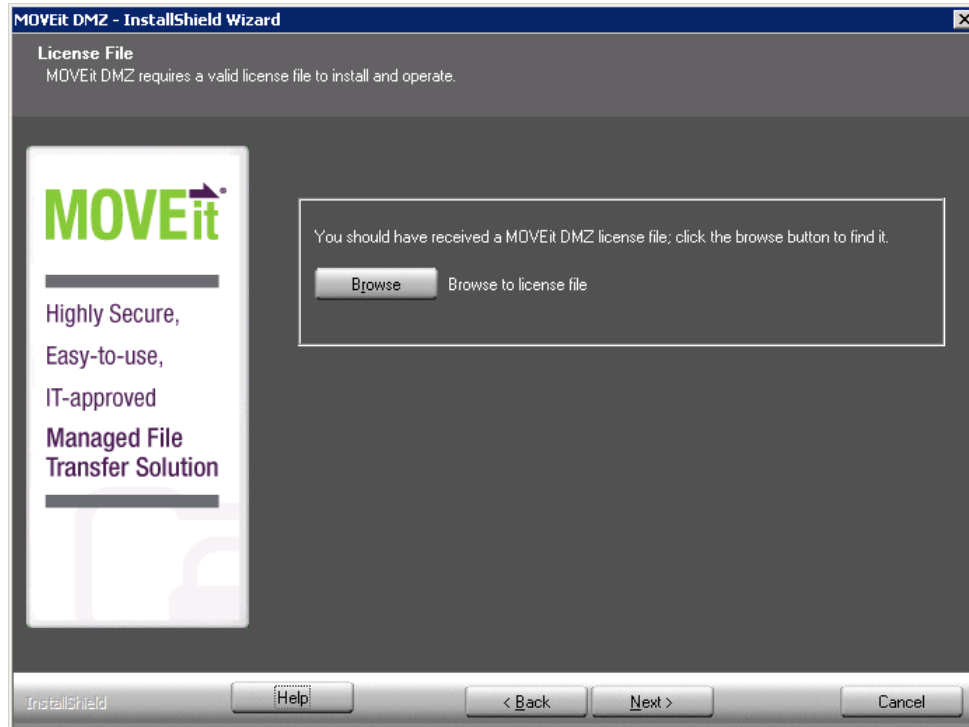
This Welcome screen opens. Click **Next**.

Install - License Agreement Dialog

Read and accept the license agreement. Click **Next**.

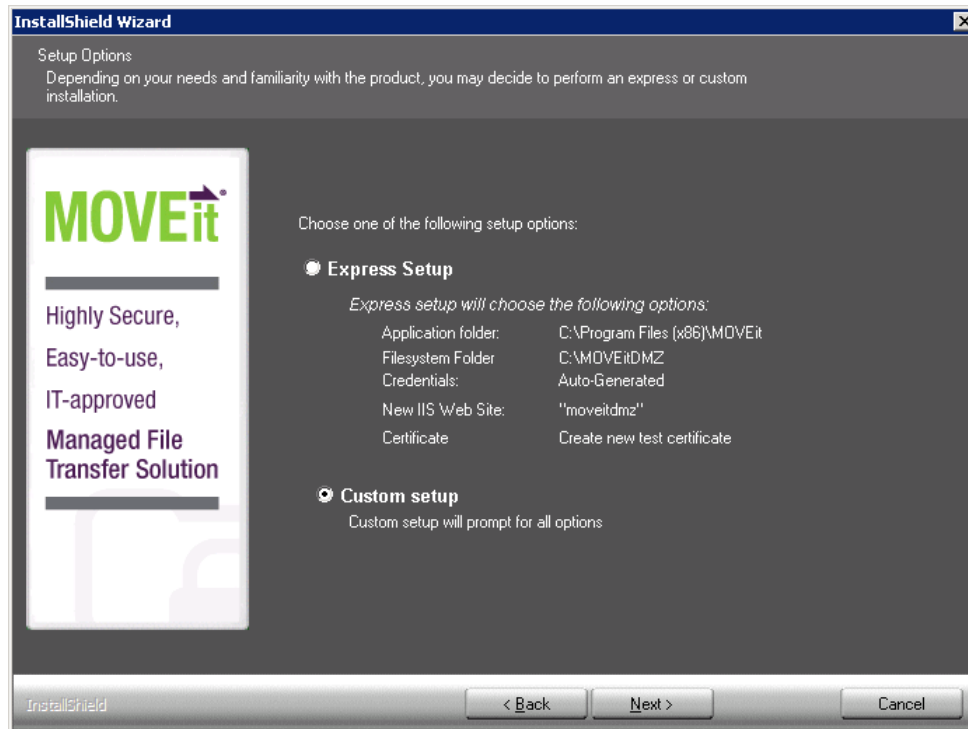
Install - License File Dialog

Click **Browse** and select the license file.



Install - Setup Options Dialog

Select **Express Setup** or **Custom Setup**.



Setup Options

- **Express Setup** - Pick this option if you are setting up an evaluation server or if you want to use the default values for the following items:
 - Application Folder: C:\Program Files\MOVEit
 - Filesystem Folder: E:\MOVEitDMZ (*largest local drive*)
 - Credentials: Use Suggested (*automatically generated*)
 - New IIS Web Site: MOVEitDMZ
 - Certificate: Create New Test Certificate
- **Custom Setup** - Pick this option and the setup will prompt for all options. If you want to use an existing Microsoft SQL Server database, instead of MySQL, you must select this option. For more information on the database settings, see *Install - Custom Setup* (on page 21).

Install - Site Identity Dialog

On this dialog box you specify the URL for user to connect to MOVEit DMZ and how MOVEit DMZ sends email notifications.

The screenshot shows the 'MOVEit DMZ - InstallShield Wizard' dialog box. The title bar reads 'MOVEit DMZ - InstallShield Wizard'. The main content area is titled 'Site Identity' and contains the following text: 'MOVEit DMZ needs to know a little about its place in the Internet, including the URL people will use to connect to it and how it should send email notifications.'

On the left side, there is a logo for 'MOVEit' with the tagline 'Highly Secure, Easy-to-use, IT-approved Managed File Transfer Solution'. Below the logo is a small graphic of a padlock.

The main form area contains the following fields and instructions:

- Public URL:** A text box containing 'https://moveit.somedomain.com'. Below it, an example is provided: 'Example: https://moveit.mycompany.com'. Above the field, instructions state: 'Enter the URL you would like your users to use to connect to this server. Email notifications will be sent bearing this URL, regardless of the internal hostname or IP address of this server.'
- Email Server:** A text box containing 'mail.somedomain.com'. Below it, an example is provided: 'Example: mail.mycompany.com'. Above the field, instructions state: 'Please also enter an accessible email server, an email address which will receive important error reports from MOVEit DMZ and the email address from which notifications should appear to come.'
- Email Address for Errors:** A text box containing 'support@somedomain.com'. Below it, an example is provided: 'Example: support@mycompany.com'.
- Return Email Address:** A text box containing 'notify@somedomain.com'. Below it, an example is provided: 'Example: notify@mycompany.com'.

At the bottom of the dialog, there is a note: 'All the values on this page may be changed later in the MOVEit DMZ Config utility.' Below the note are three buttons: '< Back', 'Next >', and 'Cancel'. The 'InstallShield' logo is visible in the bottom left corner of the dialog box.

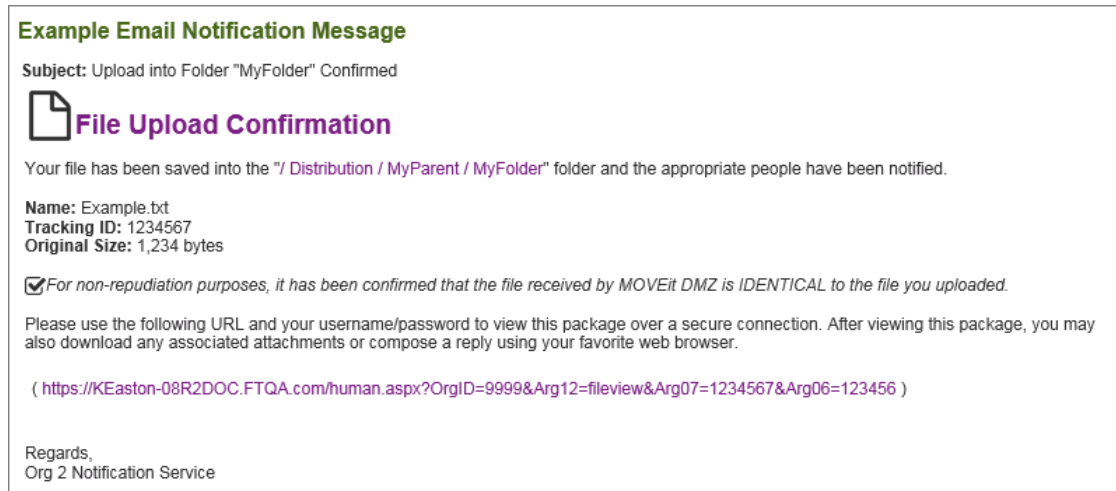
Site Identity Options

- **Public URL**
 - The URL for users to connect to this server. Email notifications will be sent with this URL, regardless of the internal hostname or IP address of this server.

Note: IP addresses and hostnames are valid, but should only be used for testing and evaluation purposes.

Examples:

- Installing into a regular folder: <https://moveit.somedomain.com>.
- Installing into a virtual folder: <https://www.somedomain.com/moveit>.
- A new file notification uses the base URL (beta.moveitdmz.com). For example:



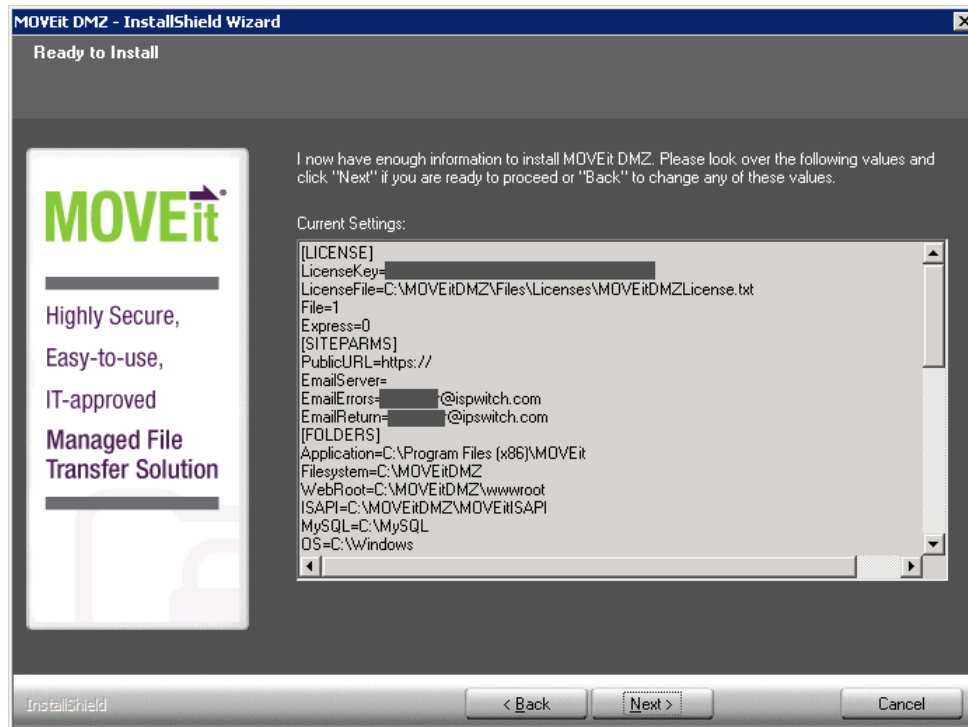
- **Email Server**
 - The email server that MOVEit DMZ will use to relay email. An IP address is a valid entry. For example, **mail.somedomain.com**
- **Email Address for Errors**
 - Occasionally MOVEit DMZ will send errors and other administrative notices using this address. It's highly recommended that this address be a valid address that is checked regularly.
 - For example, **support@somedomain.com**
- **Return Email Address**
 - The "From" address that will be used on all email notifications. It's recommended this be a valid address as end-users may reply to this address.
 - For example, **notify@somedomain.com**

All of these values may be changed later in the MOVEit DMZ Config Utility.

For a description of dialog boxes used in the Custom Setup section, starting with *Database Type*. (on page 22)

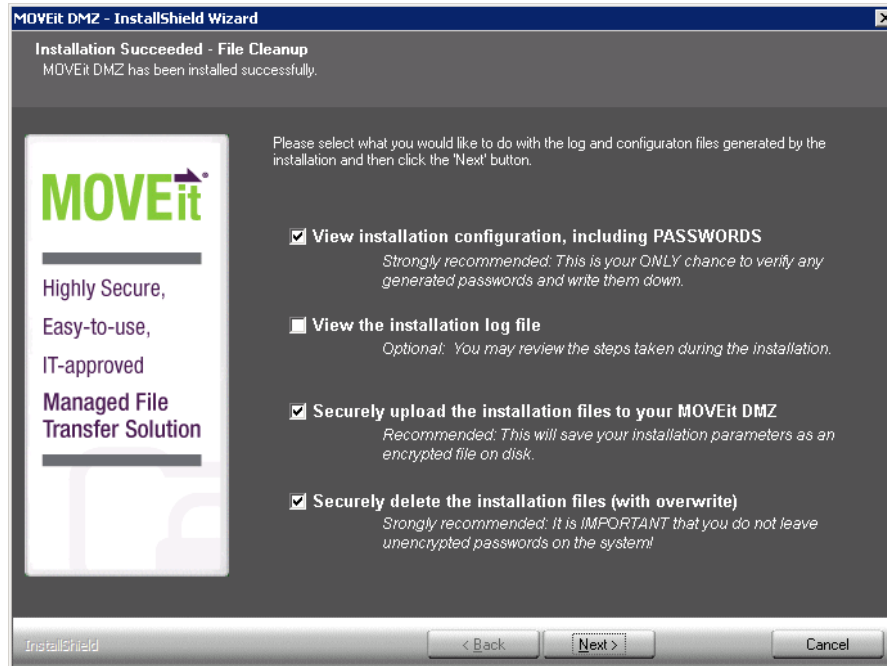
Install - Ready to Install Dialog

Review your selections and click **Next**.



Install - Installation Complete Dialog

MOVEit DMZ has been installed successfully.



Successful Install Options

- **View Installation configuration, including Passwords**

Opens a text document with all the configuration settings and passwords that have been used. This will be the only chance to verify any suggested passwords.

Important: Be sure to view the Installation configuration and write down the password for the **sysadmin** account. You will need this password to log into MOVEit and set up your organization, users, and other settings.

- **View the installation log file**

A file containing all the install steps. Useful for debugging installation issues.

- **Securely upload the installation files to your MOVEit DMZ**

Saves your installation parameters as an encrypted file on disk. Only SysAdmins can view these files.

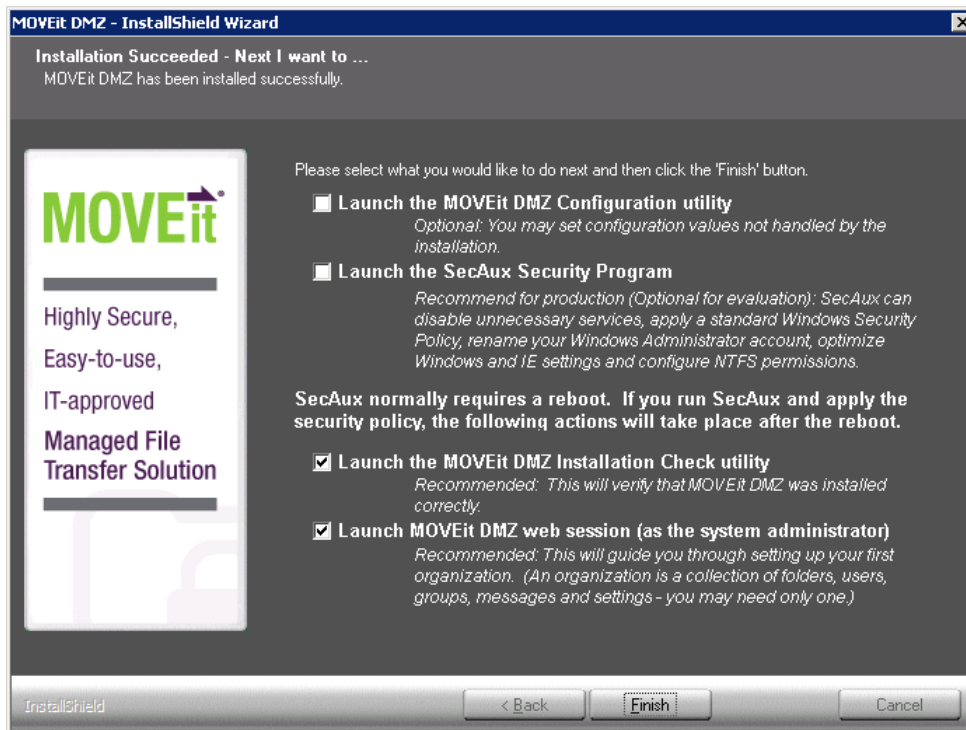
- **Securely delete the installation files (with overwrite)**

Deletes all configuration files that were generated during the install. This step is highly recommended so that unencrypted passwords do not remain on the DMZ server.

If you choose either of the first two options, you will need to close the text document before continuing to the next installation screen.

Install - Installation Finished Dialog

MOVEit DMZ has been installed successfully.



Finished Installation Options

- **Launch the MOVEit DMZ Configuration Utility**

Launches the utility that allows you to make changes to your MOVEit DMZ system. You can set configuration values that are not handled by the installation.

- **Launch SecAux Security Program**

Launches the security program to further harden your operating system.

Highly recommended: Highly recommended: Run the SecAux program on production servers that will be made available on the internet.

SecAux can disable unnecessary services, apply a Windows Security Policy, rename your Windows Administrator account, optimize Windows and IE settings and configure NTFS permissions.

- **Launch the MOVEit DMZ Installation Check Utility**

Launches the MOVEit DMZ Check Utility which is used to test various components of the MOVEit DMZ system and verify that they are in working order.

- **Launch MOVEit DMZ web session (as the SysAdmin)**

This will start you with adding a new organization and adding additional users. This step is highly recommended.

If you select multiple options here, each program/utility is displayed after the current one is closed.

After you close any open program/utility, the setup program prompts you to delete the installation configuration and log files. Doing this provides an extra measure of security.

Install - Creating an Organization

After you sign in to the MOVEit DMZ server for the first time, your first task will be to create an Organization that will contain your users, groups, folders, and files.

The Add a New Organization wizard opens.

Step 1 - Name, Passphrase, and Technical Contact

- **Name** - The name your organization will be displayed with. The name is visible to users when they are signed in to the system. Suggestion: use a name that is similar or even identical to your company name, as this name will be visible to your users when they are signed on to the system. This value can be changed after the organization has been created.

This organization's name should not be an "internal" designation, but rather something which will make sense to the people accessing this system remotely. Only the following characters are allowed in the organization name (including uppercase letters):

abcdefghijklmnopqrstuvwxyz1234567890 . ! \$? * # @ - _ = + () : ` ~ % ^ & [{ } ;

Name:

The short name is a shorter version of the organization name, used to quickly refer to that organization. It is not required, and is currently only used as an optional logon prefix to specify the organization to log on to.

Short Name:

- **Passphrase** - The passphrase is used to generate the encryption keys that will protect the files that are uploaded to your organization.

Recommended: Use the automatically-generated passphrase. It is guaranteed to meet the strength requirements imposed by the system

An automatically-generated 16-character passphrase is provided by MOVEit DMZ, and it is recommended that you use this passphrase, as it is guaranteed to meet the strength requirements imposed by the system. If you do not approve of the automatically generated passphrase, you can refresh the page to generate a new one. To create your own passphrase, select User Own Passphrase and provide the passphrase. It must meet the following requirements: It should be a relatively long sequence of characters, as random as possible, and must contain at least one letter and one number.

Important: The passphrase cannot be changed once the organization has been created, and it cannot be recovered if lost. **MAKE SURE YOU WRITE DOWN THIS PASSPHRASE AND/OR PRINT THIS PAGE.**

Each organization uses a unique key based on a passphrase to protect information. You may choose to accept the autogenerated passphrase or specify one of your own. If you choose to use the autogenerated passphrase, please **write it down** and/or print this page before proceeding.

Autogenerated Passphrase:

./%5 SbTY !D.B cgj8 b5s8

Use Autogenerated Passphrase
 Use Own Passphrase
 Enter passphrase:
 Confirm passphrase:

- **Technical Contact** - The name, phone number, and email address of the primary technical support contact for your organization, such as your helpdesk group, or customer service team. This information will be provided to users in notification emails, and on the Tech Support page. These values can be changed after the organization has been created.

Please fill in the name, phone number and email address of this organization's help desk or customer service team. This information will be used to direct end users to the first line of local technical support (e.g., the group normally responsible for resetting passwords).

Tech Contact:
 Tech Phone:
 Email:

Click the "Continue" button below to add a new organization and continue configuration.

Before you continue, you must confirm that you have written down and/or printed your organization passphrase and safely stored it.

Step 2 - Host Access Rules

Host access rules define the hosts and IP addresses where your users and administrators can log on to the system. More rules can be added at a later time.

- **Allow (End) Users to Connect From** - Defines hosts where your end users can initially log on to MOVEit DMZ. Most organizations will want to allow end users to connect from anywhere, so the default mask here is "*.*.*.*".

Allow (End) Users to Connect From
(Enter *.*.*.* to allow access from anywhere on the Internet)

- **Allow Administrators to Connect From** - Defines the hosts where your administrator users can initially log on to MOVEit DMZ. The default mask here is "10.*.*.*", which allows administrators to connect from their internal network

Allow Administrators to Connect From
(Enter "10.*.*.*" or a more appropriate Internal address range)

Step 3 - Add an Administrator

This step allows you to create your first administrator account in your new organization. The username cannot be changed after the account is created, but the password and email address can.

- **Username** - The login name of the new administrator account. The username cannot be changed once the account is created, but more accounts can be created and this one deleted at a later time, if necessary.
- **Password** - Use the recommended automatically-generated password, or select the Use Own Password option and enter your own. The password for this account may be changed at a later time.



Autogenerated Password:
jmxii8

Use Autogenerated Password
 Use Own Password

Enter Password:
Confirm Password:

- **Email Address** - The email address is used to send notifications for this administrator account will be sent to, or leave this field blank if you do not want the account to receive notifications. If you do provide an email address, notifications of events such as user and IP lockouts, and user expirations will be sent to it when they occur. The email address for this account can be changed at a later time.



Email Address:

Step 4 - Finished

Your organization is created, along with your initial host access rules and your new administrator account. Click Finish. You are returned to the Sign On screen with your new administrator username prefilled. Enter the account password and click Sign On.

On your home page, hints are provided regarding what you should do next, including uploading a logo image for your organization, choosing a color scheme, and adding user accounts.

CHAPTER 3

Install - Custom Setup

The Custom Setup lets you enter the settings for the following:

- Database Type, Name (MySQL or Microsoft SQL Server)
- Folders for the MOVEit application, filesystem and database
- Credentials for the MOVEit SysAdmin, Windows Services User, and database
- Web Site settings for Microsoft IIS
- Certificate for SSL server

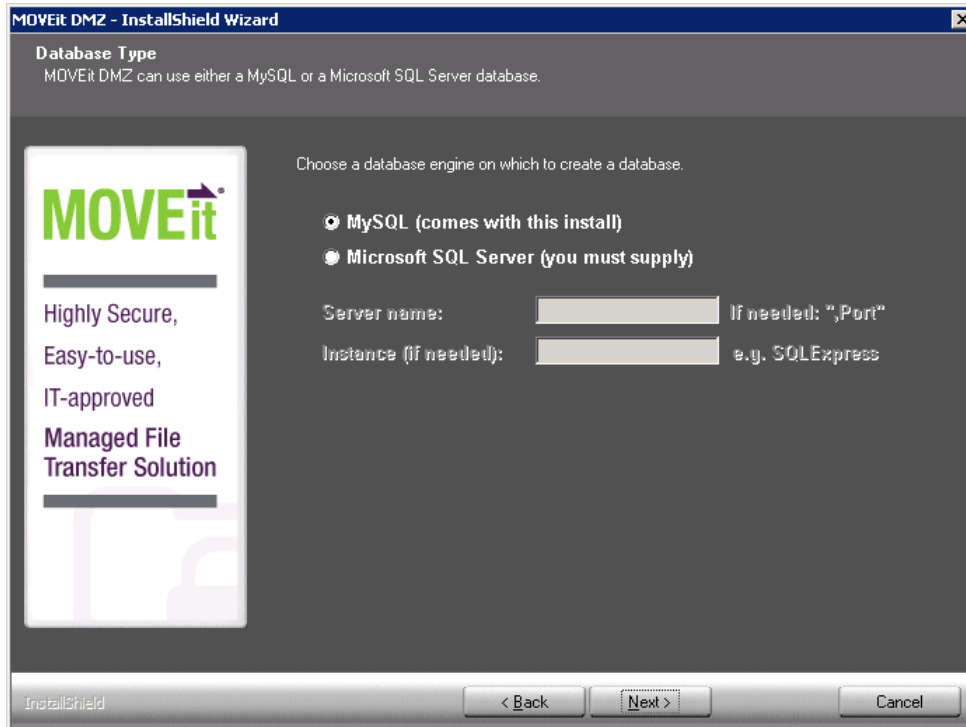
If you chose the Express install option, the setup program uses default values for these settings.

In This Chapter

Install - Custom Setup - Database Type	22
Install - Custom Setup - MySQL Database Name	23
Install - Custom Setup - MS SQL Server Credentials.....	24
Install - Custom Setup - Folders Dialog	25
Install - Custom Setup - Credentials Dialog	26
Install - Custom Setup - Web Site Dialog.....	28
Install - Custom Setup - Certificate Dialog	29

Install - Custom Setup - Database Type

Choose the database engine for MOVEit DMZ to use.



- **MySQL:** a small-footprint database engine that MOVEit DMZ will install and administer.
- **Microsoft SQL Server:** a widely-used database engine. You must supply a pre-installed instance of SQL Server if you choose this option.

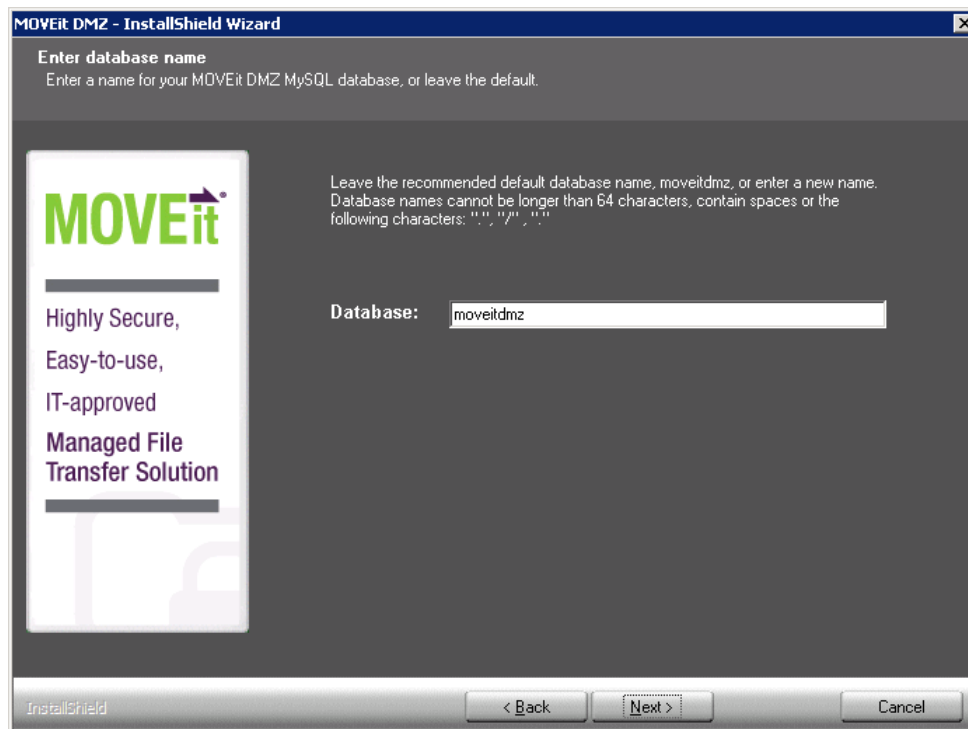
If you select Microsoft SQL Server, you must provide the following information:

- The hostname or IP address of the server. If the server is listening on a non-standard port, add a comma followed by the port number after the hostname.
- The instance name. If the MOVEit DMZ database is the default instance, this is typically blank. In a shared environment, this is the name that identifies the MOVEit DMZ database on the SQL Server, for example: **HOST1\midmzdb**

Depending on the database type selected, one of the following screens opens:

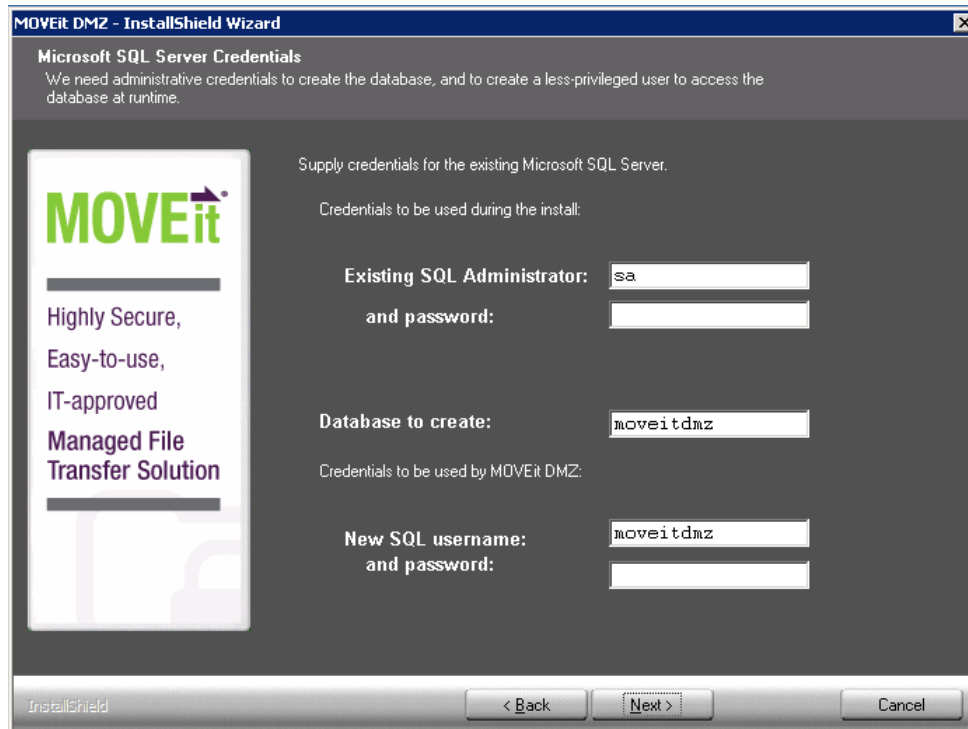
Install - Custom Setup - MySQL Database Name

Choose the database name that MOVEit DMZ should use. For most installations, you should use the default database name: **moveitdmz**. Database names cannot be longer than 64 characters, contain spaces or the following characters: period (.), comma (,), forward slash (/).



Install - Custom Setup - MS SQL Server Credentials

Provide credentials to be used to access the existing instance of Microsoft SQL Server.



The screenshot shows the "MOVEit DMZ - InstallShield Wizard" window. The title bar reads "MOVEit DMZ - InstallShield Wizard". The main heading is "Microsoft SQL Server Credentials". Below the heading, it says: "We need administrative credentials to create the database, and to create a less-privileged user to access the database at runtime."

On the left side, there is a logo for "MOVEit" and a vertical text box that reads: "Highly Secure, Easy-to-use, IT-approved Managed File Transfer Solution".

The main content area is titled "Supply credentials for the existing Microsoft SQL Server." and "Credentials to be used during the install:". It contains the following fields:

- Existing SQL Administrator:** A text box containing "sa".
- and password:** An empty password box.
- Database to create:** A text box containing "moveitdmz".

Below these fields, it says "Credentials to be used by MOVEit DMZ:" and contains the following fields:

- New SQL username:** A text box containing "moveitdmz".
- and password:** An empty password box.

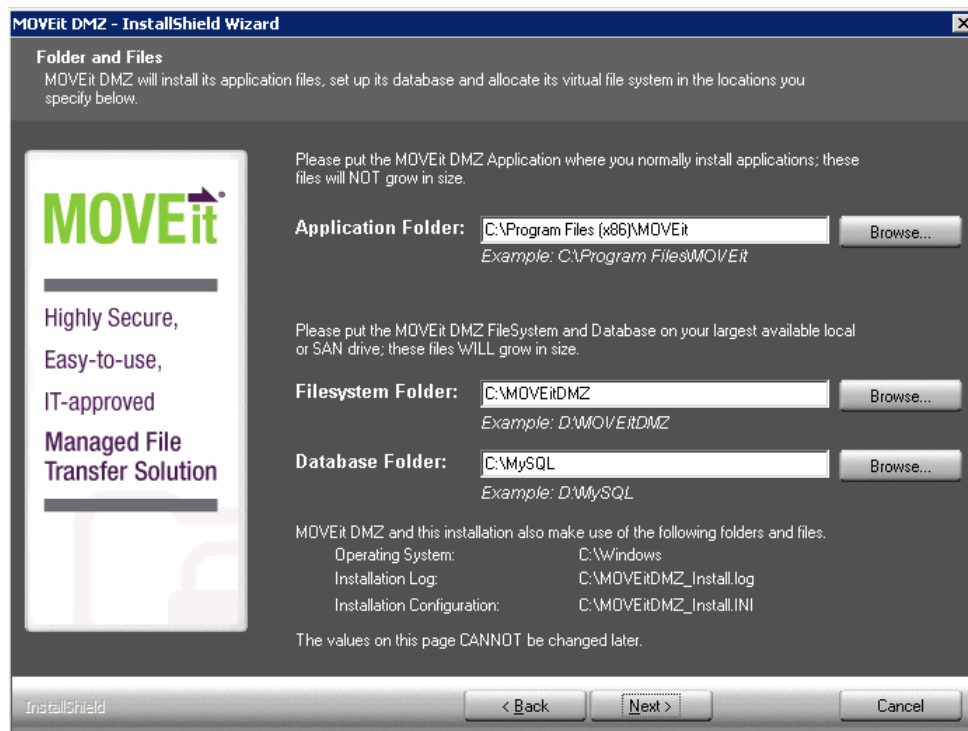
At the bottom of the window, there are three buttons: "< Back", "Next >", and "Cancel". The "Next >" button is highlighted.

SQL Server Credentials

- **Credentials to be used during the install** - Specify an existing SQL Server username and password.
- **Database to create** - In most cases, accept the suggested default.
- **Credentials to be used by MOVEit DMZ** - Specify a SQL Server username and password to be created by the install program.

Install - Custom Setup - Folders Dialog

MOVEit DMZ will install its application files, set up its database and allocate its virtual file system in the locations you specify below.



Folder and File Options

- **Application Folder**
The folder where MOVEit DMZ executables and supporting .dll's are stored. These files rarely increase in size therefore this folder requires a small amount of space.
- **FileSystem Folder**
The folder where MOVEit DMZ stores the encrypted files, logs, logoes, schemes and utilities. This folder WILL increase in size so be sure to select the largest drive as it is difficult to change directories.
- **Database Folder**
The folder where the MySQL database files will be installed. MySQL stores the configuration and logs for MOVEit DMZ. This destination will increase , so be sure to select the largest drive as it is difficult to change directories.

Install - Custom Setup - Credentials Dialog

MOVEit DMZ Default Credentials.

Important: Write down this information.

The SysAdmin password may be changed later; however, all other credentials are not easily changed after installation.

MOVEit DMZ - InstallShield Wizard

Credentials
MOVEit DMZ now runs certain services as specific users, rather than using the LocalSystem account.

The following credentials (user : password) are required to set up MOVEit DMZ. You may let the installation suggest passwords or override any suggested password with your own.

MOVEit DMZ SysAdmin: sysadmin : [] []

Root Key Passphrase: [] []
(a.k.a., "Org #0 Passphrase")

Windows Services User: midmzsvc4 : [] []
 This user already exists

MySQL Administrator: root : [] []
Enter the password for existing Administrator

MySQL User: moveitdmz : [] []

The SysAdmin password may be changed later. The rest of the credentials on this page are not easily changed after installation.

InstallShield < Back Next > Cancel

Ipswitch recommends making each password as strong as possible.

Credentials Description

- **MOVEit DMZ SysAdmin**
 - The initial user account created on your MOVEit DMZ system.
 - **Caution:** The next two settings are the System Administrator (SysAdmin) username and password. This account will have complete access to the MOVEit DMZ system and will be used to initially configure MOVEit DMZ. After you create a new organization and an administrator account in that organization, the SysAdmin account should be used only if required. However, this account has no access to files. Keep this username and password in a safe place.
 - **Password Requirement:** SysAdmin password must be at least 8 characters long and contain numbers, uppercase and lowercase case letters.

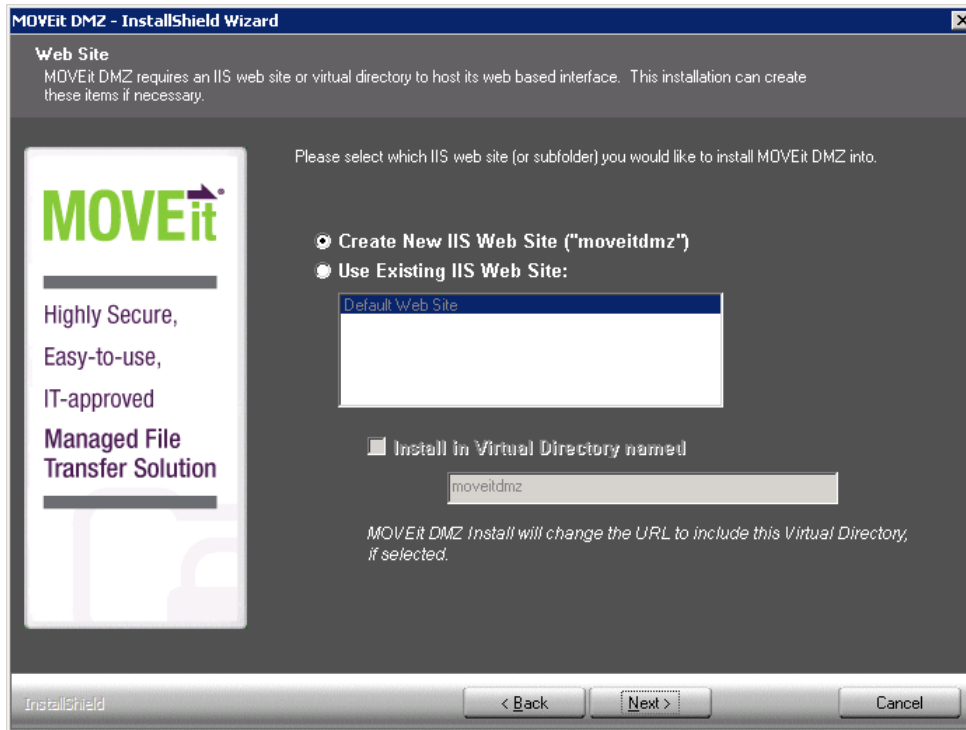
- **Root Key Passphrase**
 - Used to generate the encryption key for the default System Org (Org #0)
 - Password Requirement: Root key must be at least 12 characters long. Root key must have numbers, upper and lower case letters
- **Windows Services User**
 - The Windows account that the DMZ services will run under.
 - **This user already exists** - Check this box to use an existing Windows account with the name specified for Windows Services User.
 - Password Requirement: Windows Services password requirements are determined by the Windows security policy.
- **MySQL Administrator**
 - The master account for accessing the MySQL server.
 - Password Requirement: MySQL Administrator password must be at least 8 characters long. MySQL Administrator password must have numbers, upper and lower case letters.
- **MySQL User**
 - This is the MySQL username that MOVEit uses to log on to MySQL to access the database.
 - Password Requirement: MySQL User password must be at least 8 characters long. MySQL User password must have numbers, upper and lower case letters.

Suggest Button Description

The suggest button will suggest passwords that fit the complexity requirements. Any suggested password can be overwritten by typing in a password in the field.

Install - Custom Setup - Web Site Dialog

MOVEit DMZ requires an IIS web site or virtual directory to host its web based interface. This installation will create these items if necessary.

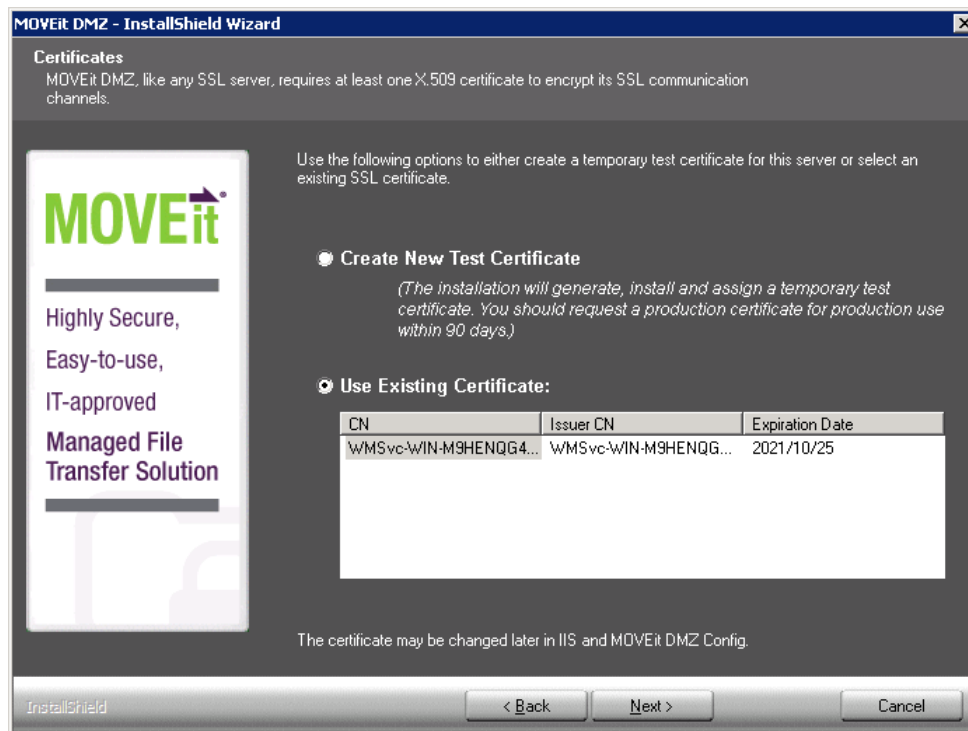


Web Site Options

- Create New IIS Web Site ("moveitdmz")
Creates a new web site in IIS called moveitdmz. This is the recommended option for MOVEit DMZ installations.
- Use Existing IIS Web site
Uses an existing web site to install/upgrade MOVEit DMZ. Please be sure to select the appropriate site name.
- Install in Virtual Directory named
Installs MOVEit DMZ into a virtual directory and also set the Base URL to the appropriate virtual directory. Checkbox and field are available only if **Use Existing IIS Web Site** is selected.

Install - Custom Setup - Certificate Dialog

MOVEit DMZ, like any SSL server, requires at least one X.509 server certificate to encrypt its SSL communication channels.



- **Create New Test Certificate**
Use this option for evaluation and testing purposes only. Installs a certificate that expires after 90 days.
- **Use Existing Certificate**
Uses an existing certificate from the Microsoft Local Machine certificate store.

The selected certificate is automatically installed and configured in IIS (for the MOVEit DMZ web site) and DMZ Config (for the MOVEit DMZ FTP Server).

The certificate(s) can be changed anytime in IIS and the DMZ Config.

When you click Next, the installer displays the **Ready to Install dialog** (on page 14).

CHAPTER 4

Upgrade

When upgrading the MOVEit DMZ software to a newer version, you will see some or all of these dialogs.

In This Chapter

Upgrade - Check Prerequisites	31
Upgrade - Welcome	33
Upgrade - License File Dialog	34
Upgrade - Windows Services User Dialog	36
Upgrade - Ready to Upgrade Dialog	37
Upgrade - Complete Dialog.....	38

Upgrade - Check Prerequisites

The installation program first checks for required software and displays a message if any of the required software is missing.

For complete list of requirements see *System Requirements* (<http://www.ipswitchft.com/products/moveit/systemrequirements.aspx>).

Microsoft .NET 4.5

When installing on Windows 2012, Microsoft .NET 4.5 is already installed with the operating system.

When installing on Windows 2008 R2, if the install program does not find Microsoft .NET 4.5, you are prompted to download and install this required software.

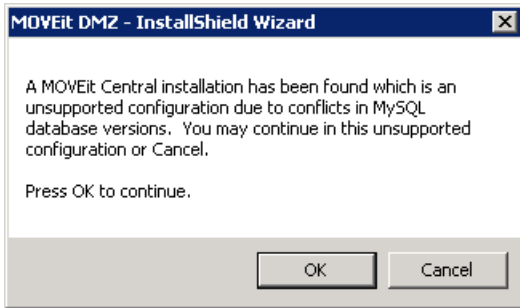
Note: you need internet connectivity for this step.



Click **Yes** to download and install the .NET 4.5 software. This can take several minutes to complete. When complete, the Welcome dialog opens.

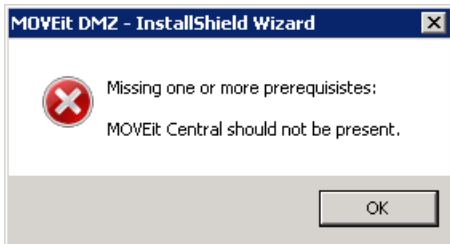
Unsupported Configuration: MOVEit Central installed on same machine

Running MOVEit DMZ and MOVEit Central on the same machine is not supported. If a MOVEit Central is installed on the machine, a message informs you of this:



We recommend you cancel the install, and either move your MOVEit Central installation or find another machine for the MOVEit DMZ installation.

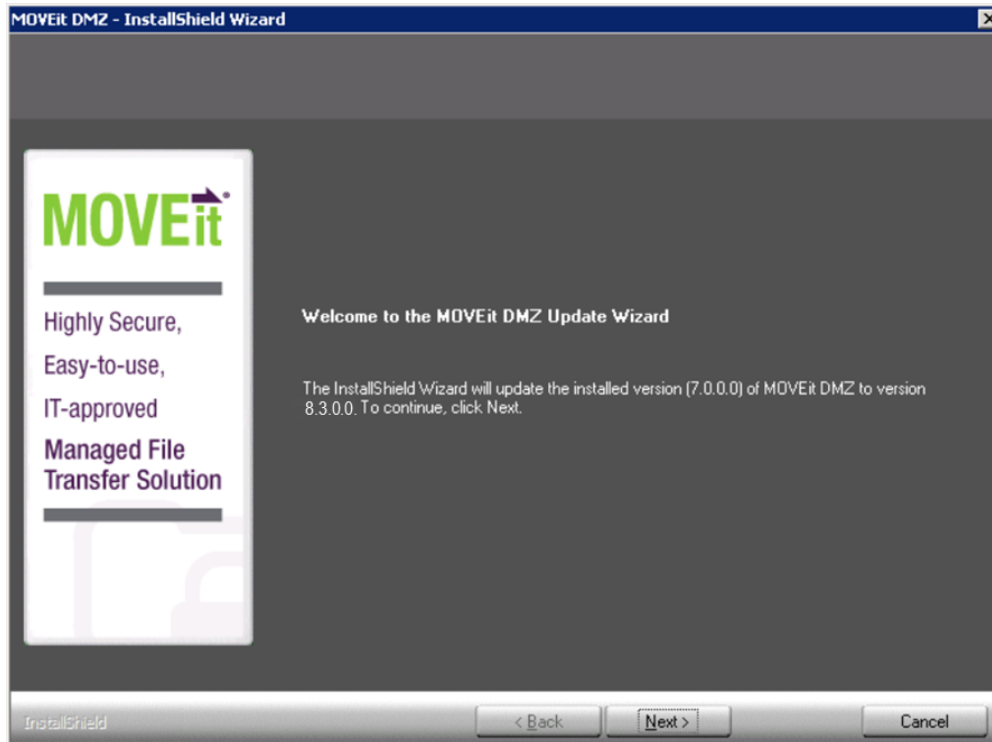
When you click **Cancel**, a second dialog opens.



Click **OK** to close the installation program.

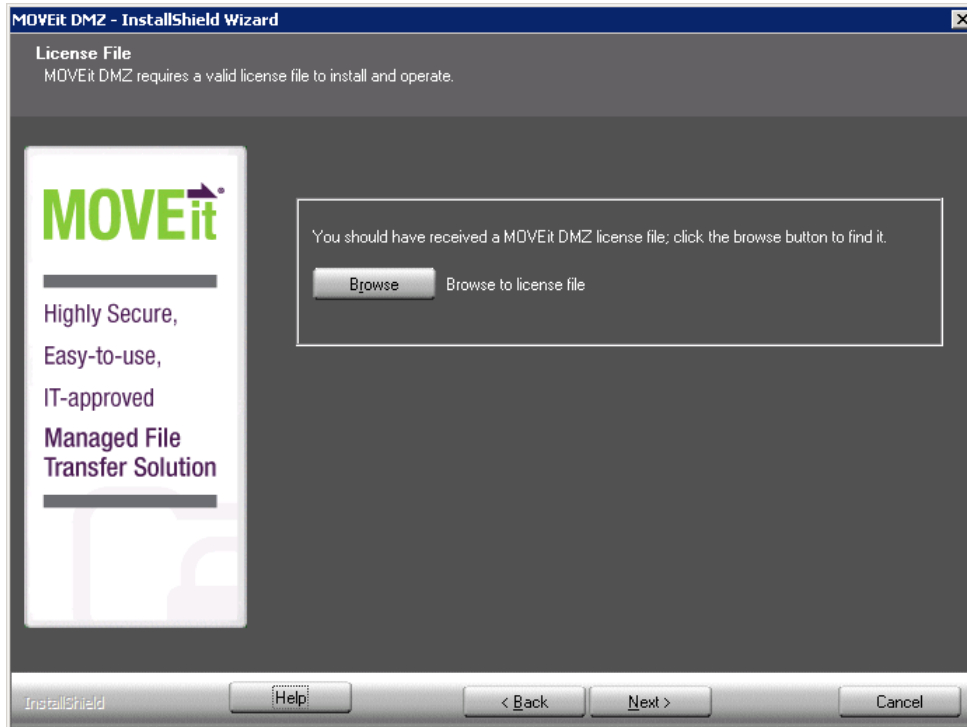
Upgrade - Welcome

The Upgrade Welcome screen appears. Click **Next**.

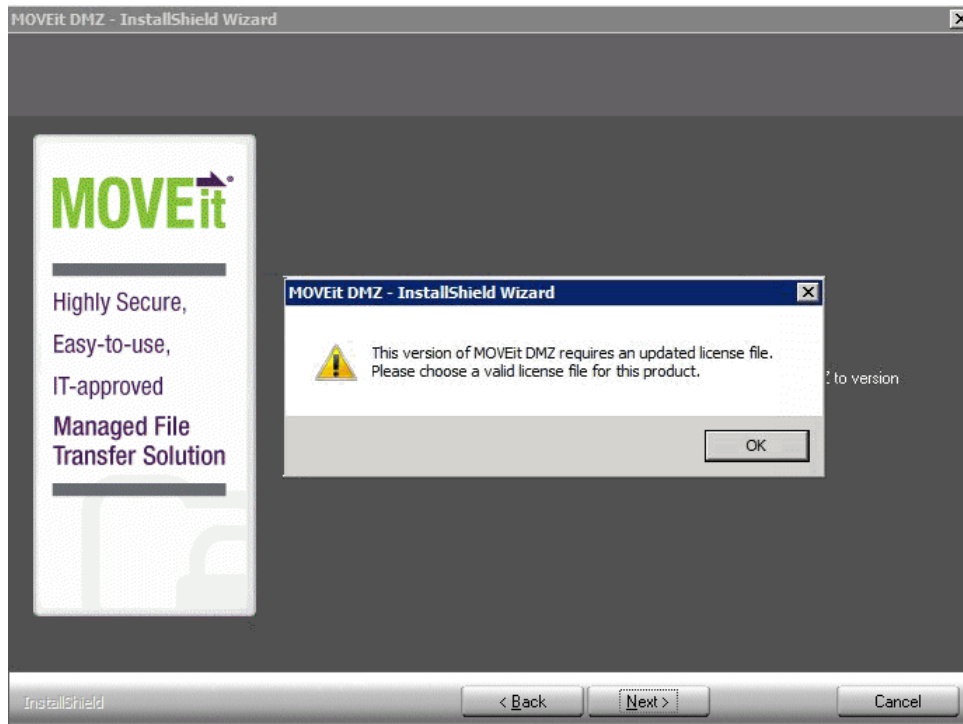


Upgrade - License File Dialog

MOVEit DMZ displays the License File dialog.



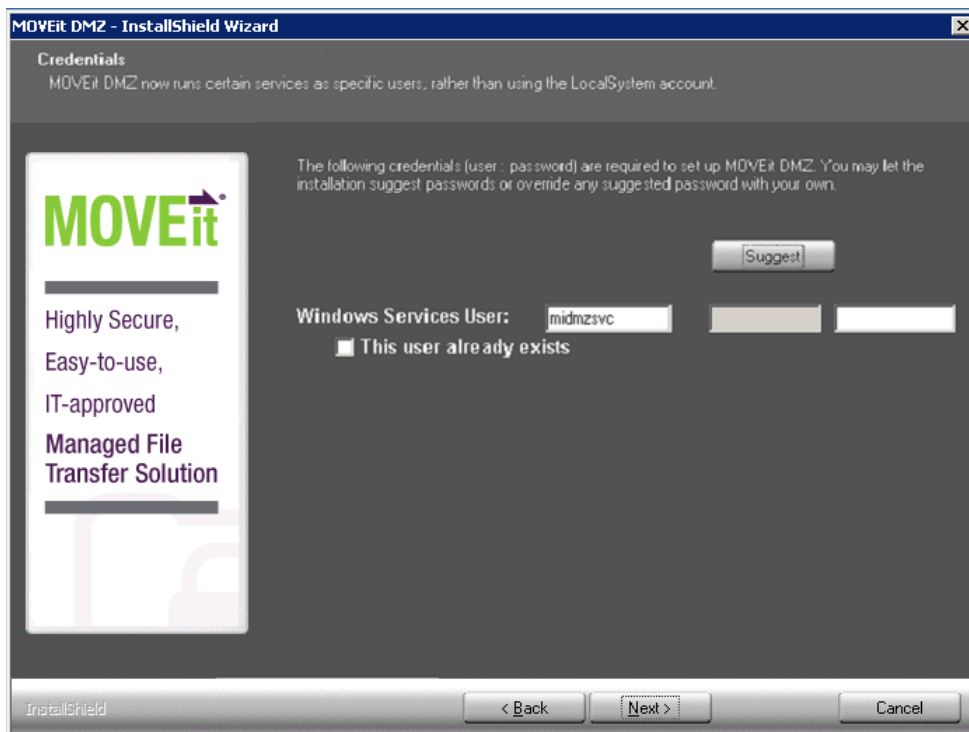
Upgrading to version 8.3 requires a new license file. If the installer finds a previous version of the license file, the following message appears:



To get a new license file, see the Upgrade section of the *MOVEit Release Notes* (<http://docs.ipswitch.com/MOVEit/DMZ83/ReleaseNotes/MOVEitReleaseNotes83.pdf>) (also available on the Ipswitch Customer Portal).

Upgrade - Windows Services User Dialog

Important: Write down this information. Credentials are not easily changed after installation.

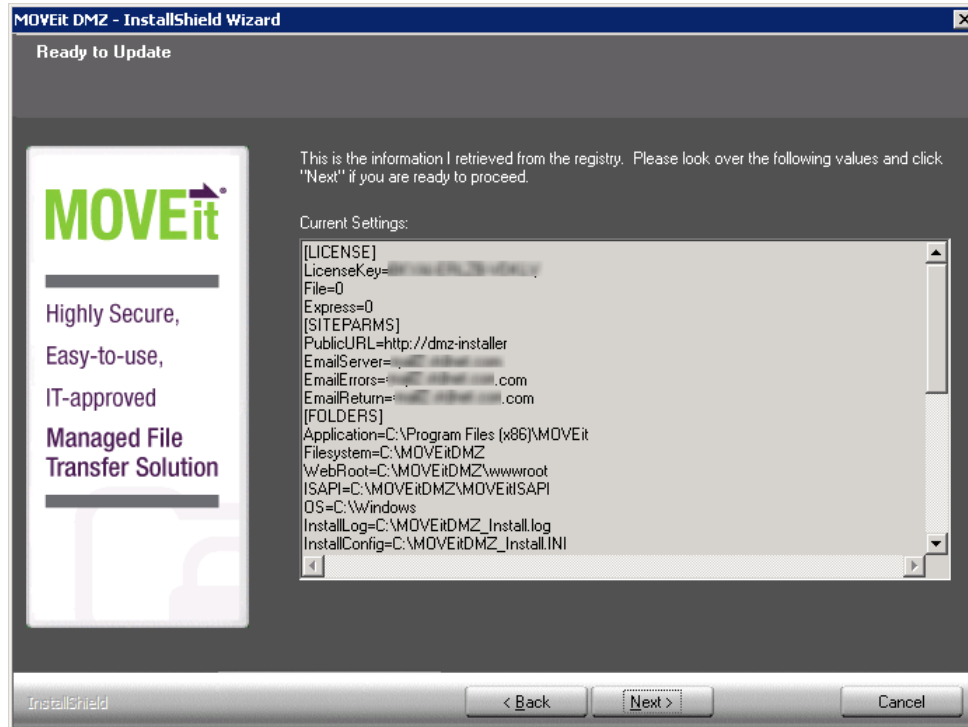


Ipswitch recommends making each password as strong as possible.

- **Windows Services User:** The Windows account under which the DMZ services will run under.
- **This user already exists:** Check this box to use an existing Windows account with the name specified for Windows Services User.
- **Password Requirement:** Windows Services password requirements are determined by the Windows security policy.

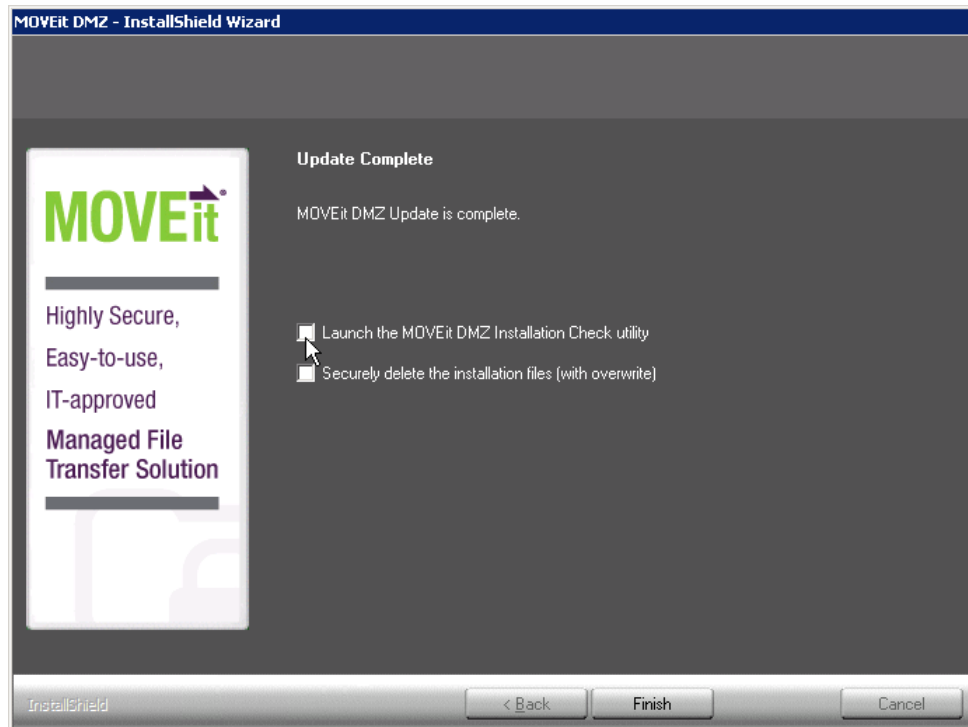
Upgrade - Ready to Upgrade Dialog

Lists MOVEit DMZ Settings. Review the information and click **Next**.



Upgrade - Complete Dialog

Displays post-install options.



- **Launch the MOVEit DMZ Installation Check Utility**
Runs the MOVEit DMZ checker to verify settings.
- **Securely delete the installation files (with overwrite)**
Securely deletes the install files that contain configuration settings and passwords.

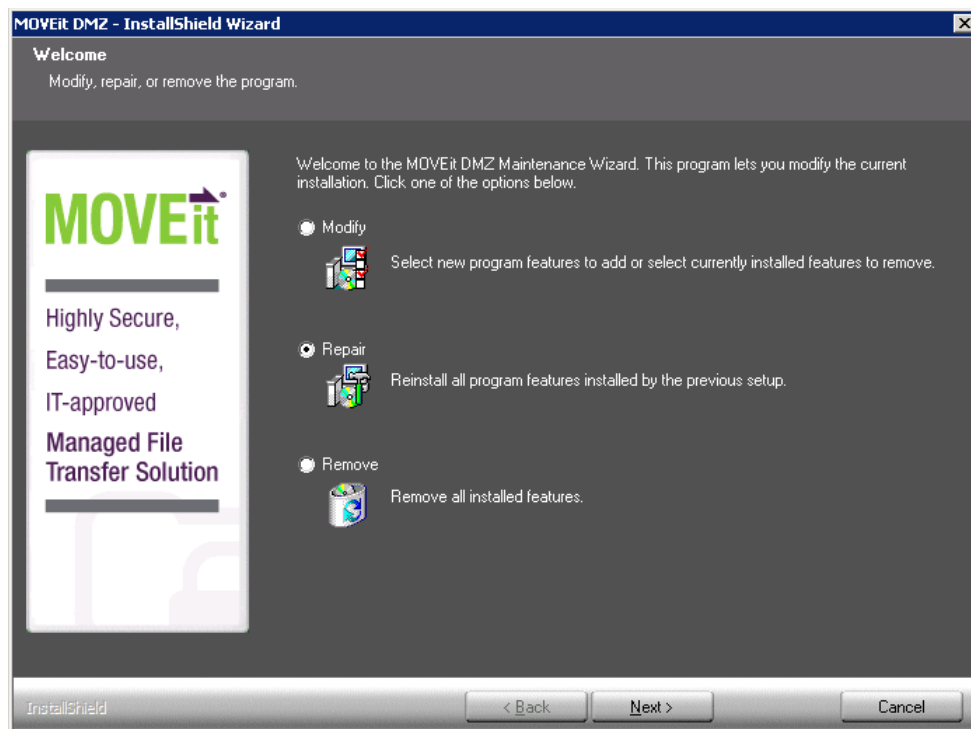
Click **Finish**.

CHAPTER 5

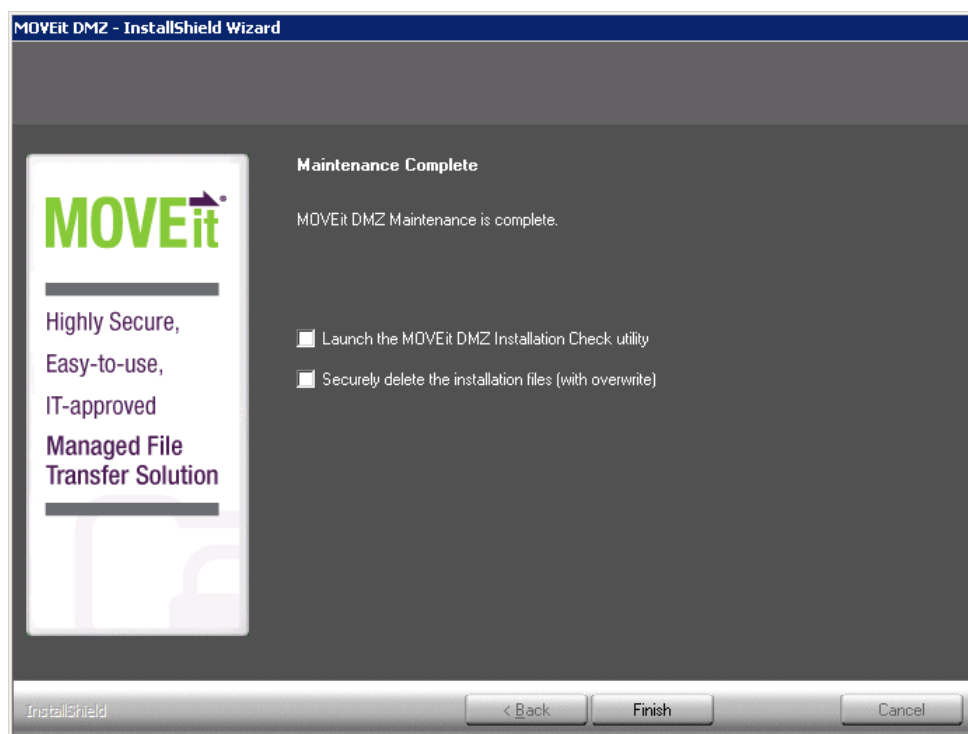
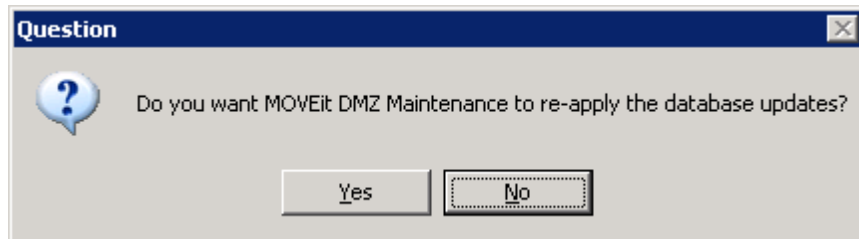
Repair - Repair Dialog

This option reinstalls all components that were originally installed with the identical version.

Note: When you run an upgrade/repair for MOVEit DMZ, the DMZ-wwwroot web.config is overwritten, removing any custom setting, for example SiteMinder mappings.



During the repair process you are asked whether you want the program to apply database updates. Applying database updates is useful in a case where an upgrade fails before or during the database update, but after files are copied.



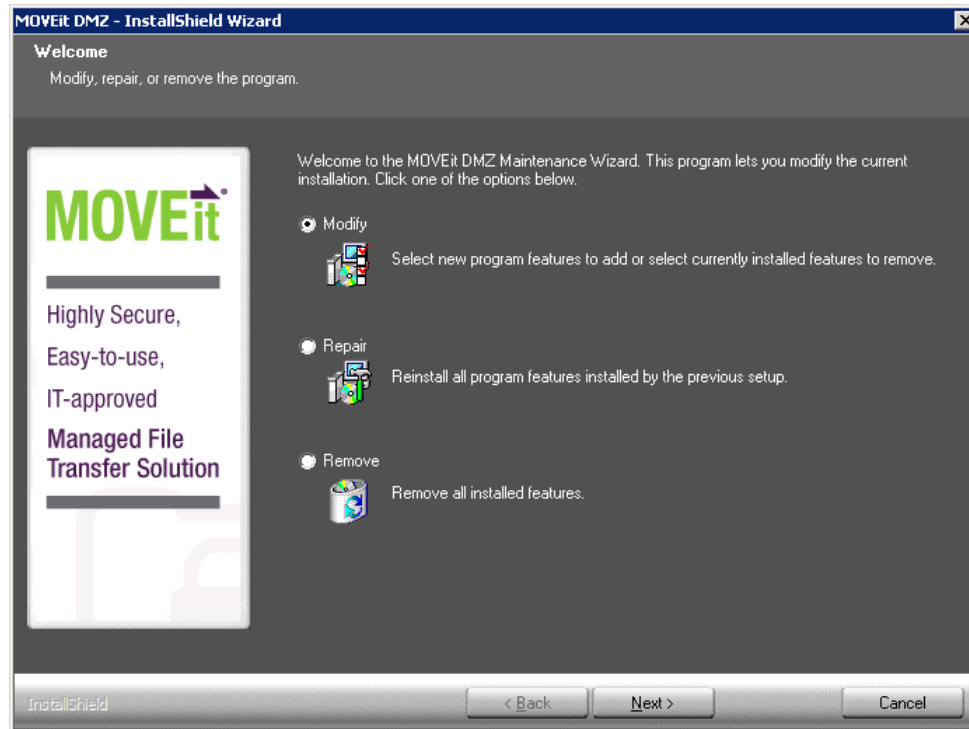
- **Launch the MOVEit DMZ Installation Check Utility**
Runs the MOVEit DMZ checker to verify settings.
- **Securely delete the installation files (with overwrite)**
Securely deletes the install files that contain configuration settings and passwords.

Click **Finish** to finalize the repair.

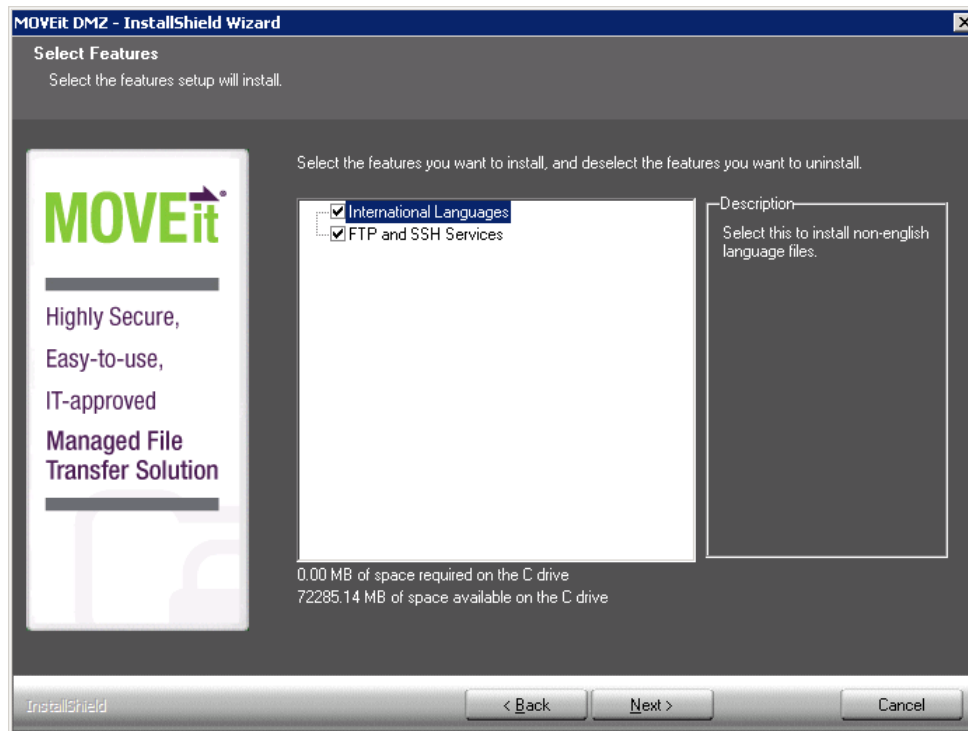
CHAPTER 6

Modify - Modify Dialog

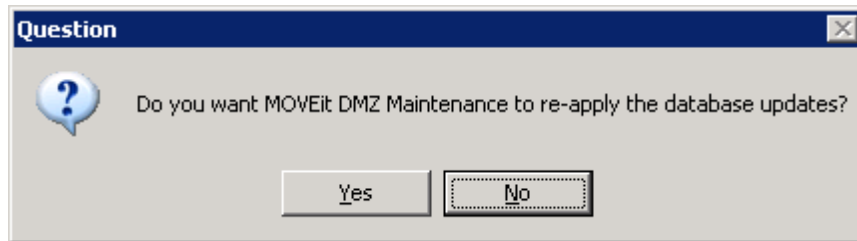
This option will install/remove MOVEit DMZ components.

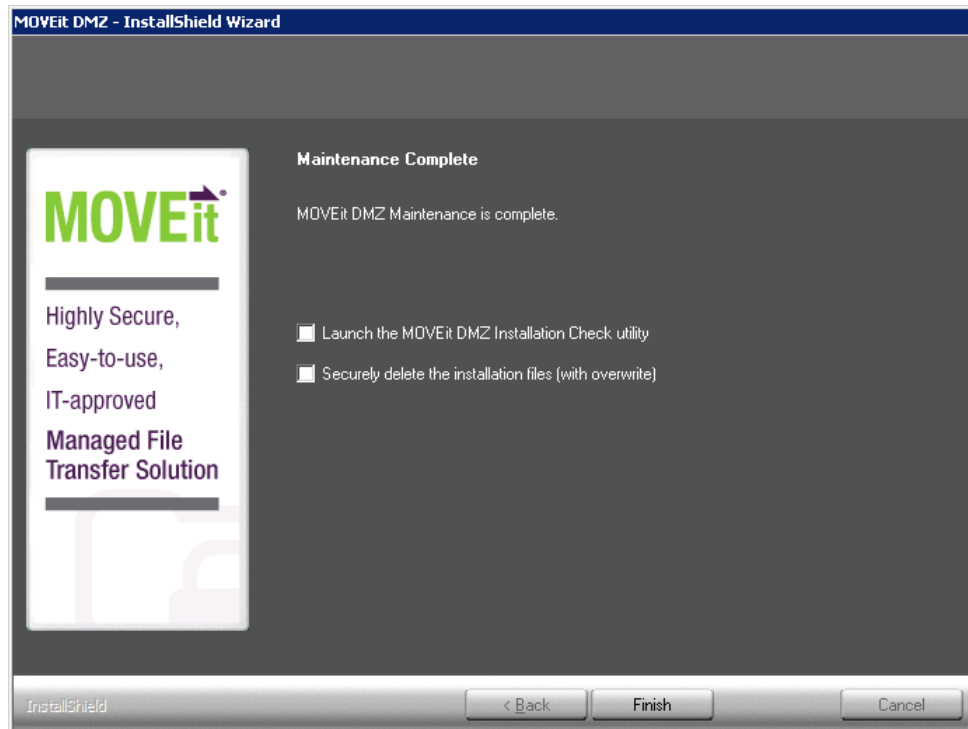


Select the features you want to install and deselect the features that you want to uninstall.



During the modify process you are asked whether you want the program to apply database updates. This is useful in a case where an upgrade fails before or during the database update, but after files are copied.





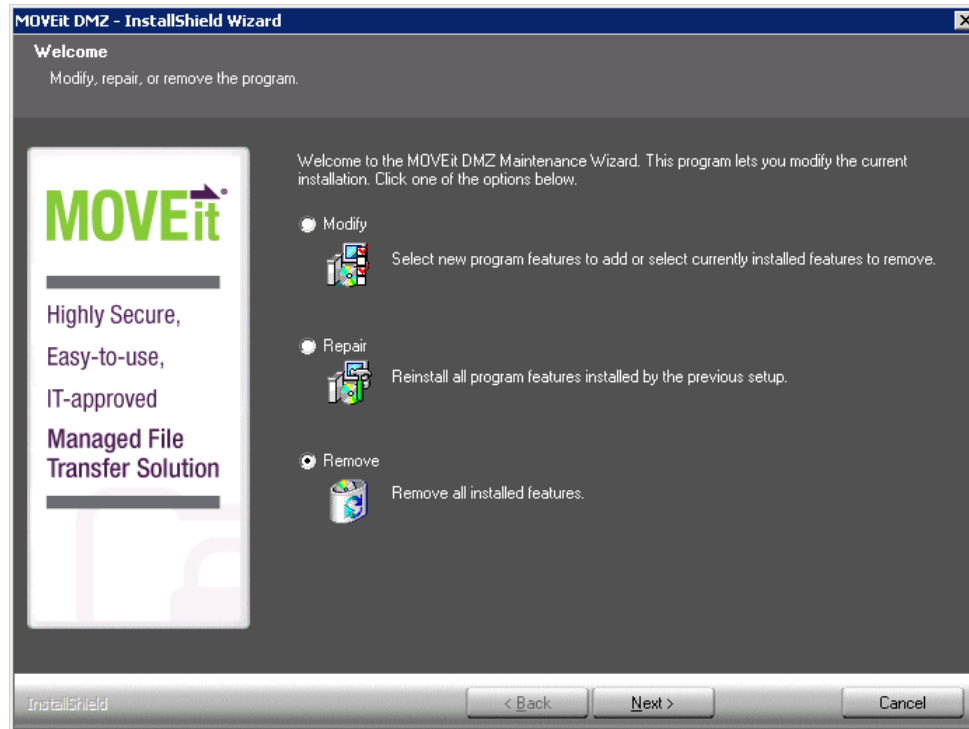
- **Launch the MOVEit DMZ Installation Check Utility**
Runs the MOVEit DMZ checker to verify settings.
- **Securely delete the installation files (with overwrite)**
Securely deletes the install files that contain configuration settings and passwords.

Click **Finish** to modify your installation.

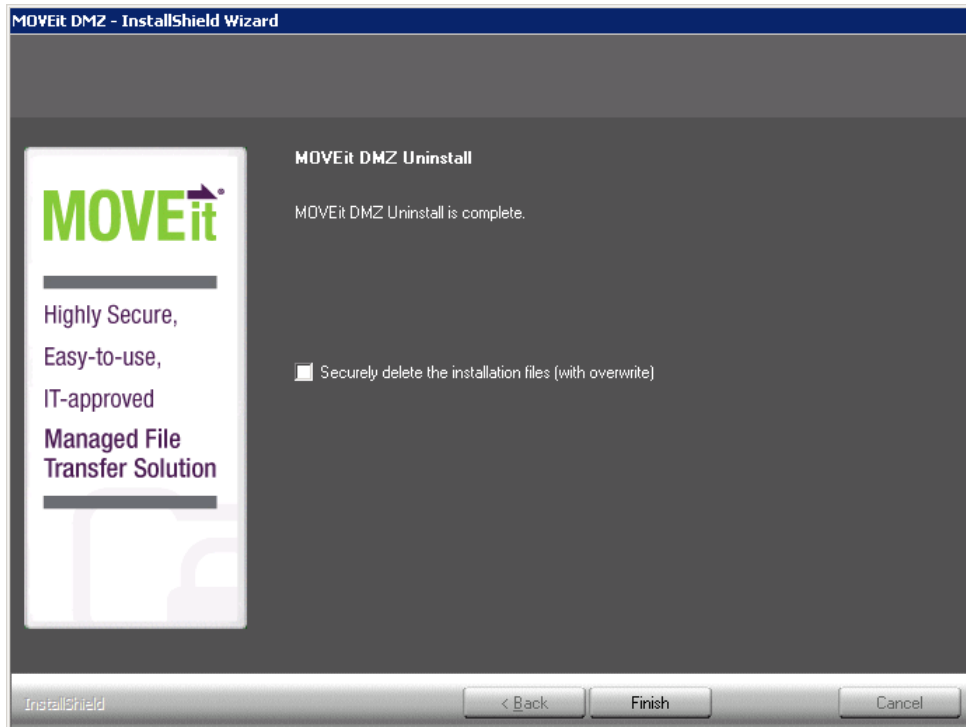
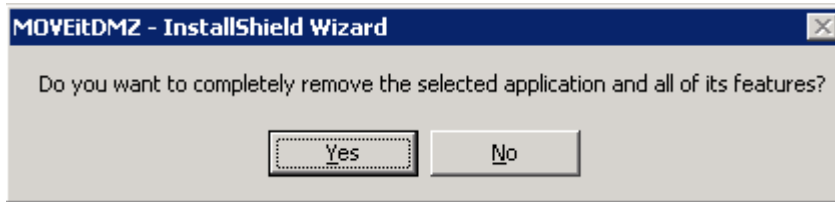
CHAPTER 7

Uninstall/Remove - Remove Dialog

This option completely removes MOVEit DMZ from the system.



You are prompted for confirmation to remove MOVEit DMZ from the system.



- **Securely delete the installation files (with overwrite)**
Securely deletes the install files that contain configuration settings and passwords.
- Click **Finish** to finalize the remove.

CHAPTER 8

Unattended Install/Upgrade

An unattended or "silent mode" option to the install program, along with an input parameter file, allows the MOVEit DMZ installation program to install, upgrade, repair or uninstall software without user interaction. This is useful in the following situations:

- Automatic testing software can create numerous installation scenarios by varying the input parameters and testing the output logs.
- "Template" installations can be created if MOVEit DMZ needs to be installed in a large number of nearly identical configurations.

Before you perform an unattended installation, familiarize yourself with the standard MOVEit DMZ installation. It is recommended that you perform many MOVEit DMZ installations to become comfortable with all the installation options. Virtualization software makes it easy to perform repeated installations from a known starting point.

Just like the regular interactive MOVEit DMZ installation, the unattended installation will install, upgrade, or repair MOVEit DMZ, depending on the condition of the existing system. An unattended uninstall can also be performed, but requires a separate option to be used when executing the install package.

Note: If you use the DMZ Web Farm feature, an unattended install cannot be used.

In This Chapter

Requirements	48
Setup.iss	48
MOVEitDMZ_Install.INI.....	49
Running the Unattended Install	51
Unattended Install Differences	52
MOVEit DMZ Unattended Upgrade or Repair	53
MOVEit DMZ Unattended Uninstall	53

Requirements

The following files must be preloaded on the system in order to perform an unattended installation:

- **DMZ_xxxx.exe** - The self-extracting MOVEit DMZ Installation program.
- **MOVEitDMZ_Install.INI** - The parameter input file for the installation. You can create an INI file by performing a standard MOVEit DMZ installation and NOT deleting the file at the end. Once you have the INI file, you can modify it in a text editor to customize the input for use as an unattended install.
- **Setup.iss** - The "Silent Mode" Install control file.

Required location of MOVEitDMZ_Install.INI is in the C:\ root directory. Recommended location for DMZ_xxxx.exe and Setup.iss is in the C:\ root directory.

Setup.iss

The Setup.iss file is used by the InstallShield installation program to simulate the responses by a user to the install dialogs in silent mode. The actual install parameters are loaded from a different file, so this is mostly a formality, but it is required. You can use the following code for the Setup.iss file:

```
[InstallShield Silent]
Version=v7.00
File=Response File
[File Transfer]
OverwrittenReadOnly=NoToAll
[{{1366622F-31E2-4E10-8B8E-F1F6D61AD703}}-DlgOrder]
Dlg0={{1366622F-31E2-4E10-8B8E-F1F6D61AD703}}-SdLicense2-0 Count=2
Dlg1={{1366622F-31E2-4E10-8B8E-F1F6D61AD703}}-SdStartCopy-0
[{{1366622F-31E2-4E10-8B8E-F1F6D61AD703}}-SdLicense2-0] Result=1
[{{1366622F-31E2-4E10-8B8E-F1F6D61AD703}}-SdStartCopy-0] Result=1
[Application]
Name=MOVEit DMZ
Version=8.3.0.0
Company=Ipswitch, Inc.
Lang=0009
```

MOVEitDMZ_Install.INI

MOVEitDMZ_Install.INI is the parameter file for the MOVEit DMZ installation. It is created from the dialog prompts during an initial installation and can be used to resume an installation if it is interrupted. For an unattended install, all the parameters are read from the INI file and the install jumps past the dialog prompts and proceeds directly to the file copy part. See the sample INI file, below. Before you use this file, it is suggested that you run a normal install, answer the prompts, and save the file at the end of the installation. Look for the check box that says **securely delete the installation files**, and uncheck the box.

Sample INI file:

```
[LICENSE]
LicenseFile=C:\MOVEitDMZ\Files\Licenses\MoveitDMZLicense.txt

File=1
Express=0
[SITEPARMS]
PublicURL=https://win2012Sys1
EmailServer=mail.corp.com
EmailErrors=helpdesk@corp.com
EmailReturn=virtual@corp.com
[FOLDERS]
Application=C:\Program Files\MOVEit
Filesystem=C:\MOVEitDMZ
WebRoot=C:\MOVEitDMZ\wwwroot
ISAPI=C:\MOVEitDMZ\MOVEitISAPI
MySQL=C:\MySQL OS=C:\WINDOWS\

OS=C\Windows
InstallLog=C:\MOVEitDMZ_Install.log
InstallConfig=C:\MOVEitDMZ_Install.INI
[CREDENTIALS]
MySQLAdministratorUsername=root
MySQLAdministratorPassword=P95Ux123
MySQLUserUsername=moveitdmz
MySQLUserPassword=F958m8P8
SysAdminUsername=sysadmin
SysAdminPassword=P95Ux123
RootKeyPassphrase=864584Zr417s
```

```
ServiceUsername=midmzsvc3
[WEBSITE]
CreateNewSite=1
NewSiteName=moveitdmz
OldSiteName=Default Web Site
CreateVDir=0
VDirName=moveitdmz
[SSLSERVERCERT]
CreateTestCert=1
ExistingCertIdent=win2012Sys1|00
```

Most of the parameters in the INI file are self-explanatory. More information on these fields can be found in the dialog descriptions for the regular install process. The few that need more description in the context of the unattended install are listed here.

- **Express=0** is used in a normal install to skip many dialogs. In an unattended install, it is ignored.
- **CreateNewSite=1** instructs the installer to create a new IIS website for MOVEit DMZ. If it is set to 0, the installer will use an existing website for MOVEit DMZ.
- **NewSiteName=moveitdmz** is the website name created if CreateNewSite=1.
- **OldSiteName=Default Web Site** is the website name used if CreateNewSite=0.
- **CreateVDir=0** controls whether a full website is used for MOVEit DMZ or a virtual directory under a website. If the value is set to 1, the installer places MOVEit DMZ in a virtual director.
- **VDirName=moveitdmz** is the name of the virtual directory, relative to the 'OldSiteName' website in which the MOVEit DMZ is located. It is only used if CreateVDir=1. If you use a virtual directory, you should include the this virtual directory name in the PublicURL, above. The unattended install will not automatically modify the URL as does an interactive install.
- **CreateTestCert=1** tells the installer to create a test SSL certificate for the MOVEit DMZ website. If the value is set to 0, the installer will use an existing certificate and apply it to the website and FTP server.
- **ExistingCertIdent=win2003Sys1|00** is the CN= name of the SSL certificate, and the serial number of the certificate. If CreateTestCert=1, this is the information for the test certificate to be created by the installer. You want the CN= name part to match the DNS name in the PublicURL above. The serial number part is always '00' if the installer is creating the test certificate. If CreateTestCert=0, then the CN= part and the serial number part should describe the actual certificate to be used for the MOVEit DMZ website.
- **MSSQLAdministratorPW** is the password for the Microsoft SQL Server Administrator account. The setup program, when run manually, will not include this password in the INI file. You must add the following entry for this credential: `MSSQLAdministratorPW=[password]`, for example, `MSSQLAdministratorPW=P32Ux215`

Note: The actual parameter is misspelled ("MSSQLAdminstratorPW" rather than "MSSQLAdministratorPW", so you must enter it as "MSSQLAdminstratorPW")

Running the Unattended Install

To launch the unattended install, run the installation package EXE from a command prompt or the Start | Run dialog:

```
c:\DMZ_xxxx.exe /s /f1"c:\setup.iss" /f2"c:\setup.log"
```

The installation package will run and create the files

- **Setup.log** which contains the result code returned by the installation process
- **MOVEitDMZ_Install.log** which contains all the steps completed by the installation package.

The MOVEitDMZ_Install.log will end with one of these messages:

- Silent Mode Installation is complete
- Silent Mode Abort
- Silent Mode Soft Abort
- Silent Mode maintenance installation is complete
- Silent Mode Upgrade is complete

In addition, the setup.log will contain the result code and version information:

```
[InstallShield Silent]
Version=v7.00
File=Log File
[ResponseResult]
ResultCode=0
[Application]
Name=MOVEit DMZ
Version=8.3.0.0
Company=Ipswitch, Inc.
Lang=0009
```

For a successful installation, the ResultCode is 0.

For a "Soft Abort", the ResultCode is 1

For an Abort, the ResultCode is 2.

If the installation requires a reboot to complete, the MOVEitDMZ_Install.log includes a line like this:

- Reboot will be required to complete silent install
- Reboot will be required to complete silent maintenance install
- Reboot will be required to complete silent upgrade

Unattended installation from the command prompt

If you start the unattended install from a command prompt, the installation package will be launched and the command prompt will return. To confirm that the installation is finished, you must check the MOVEitDMZ_Install.log for the correct completion line. It is not sufficient to check for the setup.log ResultCode value, because that file might be written before the installation is complete. To determine that the installation has completed before you check any files, use this variation of the start command:

```
start /wait c:\DMZ_xxxx.exe /s /f1"c:\setup.iss" /f2"c:\setup.log"
```

Unattended Install Differences

Because the install skips all dialog prompts in silent mode, some actions that the MOVEit DMZ installation can perform are skipped in the unattended install. Some parameters that would be calculated or pre-filled during the install dialogs, use only the values from the MOVEitDMZ_Install.INI file. For example, the computer name is set in the PublicURL field during a regular install, but you must set that field in the INI. Also, the disk drive with the most space would be used for all base directories, but you must set the correct drive in the [FOLDERS] section of the INI file. Other steps skipped are:

- View installation configuration, including PASSWORDS
- View the installation log file
- Securely upload the installation files to your MOVEit DMZ
- Securely delete the installation files (with overwrite)
- Launch the MOVEit DMZ Configuration utility
- Launch the SecAux Security Program
- Launch the MOVEit DMZ Installation Check utility
- Launch MOVEit DMZ web session (as the system administrator)

MOVEit DMZ Unattended Upgrade or Repair

The MOVEit DMZ unattended install will automatically perform an Upgrade or a Repair if it finds an existing MOVEit DMZ already in place.

- An Upgrade will be performed if the existing MOVEit DMZ is an older version.
- A Repair will be performed if the existing MOVEit DMZ is the same version. In case of a Repair, the unattended install will always perform the database upgrade instead of prompting as the regular Repair install does.

MOVEit DMZ Unattended Uninstall

To perform an unattended uninstall, run the command this way:

```
c:\DMZ_XXXX.exe /removeonly /s /f1"c:\setup.iss" /f2"c:\setup.log"
```

Like the unattended install, the unattended uninstall leaves the IIS, INI and LOG files on disk when it completes.

CHAPTER 9

SecauxNET Utility

Running the SecAuxNet utility is optional. Ipswitch recommends running the utility to further protect your operating system and the MOVEit host from security threats.

The SecAuxNET utility is used to prepare a Windows Server platform running the MOVEit DMZ application for deployment on an Internet-exposed network segment. Most of what SecAuxNET does is expressed in a Windows security template, which SecAuxNET generates and applies. The rest of SecAuxNET's activities involve applying some registry changes for the current user; these are not expressed in a Windows security template.

SecAuxNET applies several security settings that could interfere with the proper operations of a Domain Controller. For this reason, SecAuxNET will detect whether it is being run on a domain controller and will immediately exit with a warning message if it finds that it is.

SecAuxNET offers the installer/operator several different options to optimize and lock down the server, and uses answers to these options to generate the final template and perform other security actions.

Backing up system settings

The SecAuxNET utility will prompt you to backup the registry, which is recommended. In addition, so that you can restore settings if needed, we recommend that you create a backup of the following before running the utility:

- Windows operating system
- Web.config file in C:\MOVEit\wwwroot (or the virtual folder in this directory, if used)
- the current Windows Security Policy

See the section "Rolling Back Changes" for information about restoring settings.

In This Chapter

Welcome	56
Command Line Arguments	56
Optimize Windows and Internet Explorer	57
Disable Unneeded Services and Applications	60
Apply Recommended Windows Security Settings	65
Apply Recommended NTFS Permissions	67
Rename Administrator Account	68
Configure IIS.....	69
Configure SMB (Server Message Block) Signing	70

Final Steps.....	71
Rolling Back Changes.....	73

Welcome

The initial Welcome form provides a quick overview of what the utility does, and also allows the user to inform the utility as to whether the server is a member of an Active Directory domain, and whether MOVEit DMZ Web Farm will be or already is installed.

If the domain member checkbox is checked, indicating the server is a member of a domain, SecAuxNET will not disable the NetBIOS Helper service. This service is required in order for the server to authenticate Active Directory users who try to access the server via Remote Desktop Protocol. If the checkbox is not checked, the TCP/IP NetBIOS Helper service will be disabled along with the other non-essential services.

If the Web Farm checkbox is checked, the "Disable DCOM" option in the "Disable Unneeded Services and Applications" section will be unchecked by default, as DCOM is required for MOVEit DMZ Web Farm support. If the checkbox is not checked, the Disable DCOM option will be checked by default.

Command Line Arguments

-r : Tells SecAuxNET that the server will be part of a MOVEit DMZ web farm. This causes the utility to enable the web farm checkbox on the Welcome form, which automatically disables the "Disable DCOM" option. DCOM is required for MOVEit DMZ web farm support.

-l (logfile path) : Tells SecAuxNET to append logging information to the provided filepath. If the file does not exist, it will be created. Otherwise, it will be opened in APPEND mode and written to.

Optimize Windows and Internet Explorer

These options optimize certain Windows, Explorer, and Internet Explorer settings for both security and ease of use. All options are recommended, and are enabled by default.

Optimize Windows Operating System

This option sets recommended operating system settings for best performance and security when running the MOVEit DMZ application. The following registry changes are made when this option is enabled:

- **Optimize for background services**
HKLM\SYSTEM\CurrentControlSet\Control\PriorityControl\Win32PrioritySeparation = 24
- **Enable logging during a crash**
HKLM\SYSTEM\CurrentControlSet\Control\CrashControl\LogEvent = 1
- **Enable sending of an alert on crash**
HKLM\SYSTEM\CurrentControlSet\Control\CrashControl\SendAlert = 1
- **Enable automatic reboot**
HKLM\SYSTEM\CurrentControlSet\Control\CrashControl\AutoReboot = 1
- **Disable core dump on crash**
HKLM\SYSTEM\CurrentControlSet\Control\CrashControl\CrashDumpEnabled = 0
- **Set TCP timeout**
HKLM\SYSTEM\CurrentControlSet\services\Tcpip\Parameters\TcpTimedWaitDelay = 65534
- **Set maximum user ports**
HKLM\SYSTEM\CurrentControlSet\services\Tcpip\Parameters\MaxUserPort = 20

Optimize Windows Explorer

This option sets recommended Windows Explorer settings for best performance, security, and ease of administration. The following registry changes are made when this option is enabled:

Note: These options are applied to the currently signed on user, and thus are not set by the security template, but rather are set by the SecAuxNET utility itself.

- **Enable alternate color for compressed files**
HKCU\SOFTWARE\Microsoft\Windows\CurrentVersion\Explorer\Advanced\ShowCompColor = 1
- **Disable hiding of files (1 = disabled, 2 = enabled)**
HKCU\SOFTWARE\Microsoft\Windows\CurrentVersion\Explorer\Advanced\Hidden = 1
- **Disable hiding of file extensions**
HKCU\SOFTWARE\Microsoft\Windows\CurrentVersion\Explorer\Advanced\HideFileExt = 0
- **Enable showing of protected operating system files**
HKCU\SOFTWARE\Microsoft\Windows\CurrentVersion\Explorer\Advanced\ShowSuperHidden = 1

- **Disable launching folder windows in a separate process**
HKCU\SOFTWARE\Microsoft\Windows\CurrentVersion\Explorer\Advanced\SeparateProcess = 0
- **Disable webview in explorer**
HKCU\SOFTWARE\Microsoft\Windows\CurrentVersion\Explorer\Advanced\WebVew = 0
- **Disable full path in title bar**
HKCU\SOFTWARE\Microsoft\Windows\CurrentVersion\Explorer\CabinetState\FullPath = 0
- **Enable full path in address bar**
HKCU\SOFTWARE\Microsoft\Windows\CurrentVersion\Explorer\CabinetState\FullPathAddress = 1
- **Use one recycle bin setting for all drives**
HKCU\SOFTWARE\Microsoft\Windows\CurrentVersion\Explorer\BitBucket\UseGlobalSettings = 1
- **Don't use recycle bin, just delete the file**
HKCU\SOFTWARE\Microsoft\Windows\CurrentVersion\Explorer\BitBucket\NukeOnDelete = 1

Optimize Windows Internet Explorer

This option sets recommended Internet Explorer settings for best performance, security, and ease of administration. The following registry changes are made when this option is enabled:

Note: These options are applied to the currently signed on user, and thus are not set by the security template, but rather are set by the SecAuxNET utility itself.

- **Set the start page to localhost**
HKCU\SOFTWARE\Microsoft\Internet Explorer\Main\Start Page = "localhost"
- **Disable autocomplete on forms**
HKCU\SOFTWARE\Microsoft\Internet Explorer\Main\Use FormSuggest = "no"
- **Disable autocomplete of passwords**
HKCU\SOFTWARE\Microsoft\Internet Explorer\Main\FormSuggest Passwords = "no"
- **Enable error display on all script errors**
HKCU\SOFTWARE\Microsoft\Internet Explorer\Main\Error Dlg Displayed On Every Error = "yes"
- **Enable script debugger**
HKCU\SOFTWARE\Microsoft\Internet Explorer\Main\Disable Script Debugger = "no"
- **Enable notification once done downloading**
HKCU\SOFTWARE\Microsoft\Internet Explorer\Main\Notify Download Complete = "yes"
- **Disable friendly http errors**
HKCU\SOFTWARE\Microsoft\Internet Explorer\Main\Friendly http errors = "no"
- **Enable printing of background and images**
HKCU\SOFTWARE\Microsoft\Internet Explorer\Main\Print_Background = "yes"
- **Disable Profile Assistant**
HKCU\SOFTWARE\Microsoft\Internet Explorer\Security\P3Global\Enabled = 0
- **Check for new page on every visit**
HKCU\SOFTWARE\Microsoft\Windows\CurrentVersion\Internet Settings\SyncMode5 = 3

-
- **Disable check for server certificate revocation**
HKCU\SOFTWARE\Microsoft\Windows\CurrentVersion\Internet Settings\CertificateRevocation = 0
 - **Disable caching of SSL-encrypted web pages**
HKCU\SOFTWARE\Microsoft\Windows\CurrentVersion\Internet Settings\DisableCachingOfSSLPages = 1
 - **Disable persistent cache**
HKCU\SOFTWARE\Microsoft\Windows\CurrentVersion\Internet Settings\Cache\Persistent = 0
 - **Disable Fortezza protocol**
HKCU\SOFTWARE\Microsoft\Windows\CurrentVersion\Internet Settings\Fortezza = 0
 - **Disable support for all secure protocols except SSL 3.0 and TLS 1.0**
HKCU\SOFTWARE\Microsoft\Windows\CurrentVersion\Internet Settings\SecureProtocols = 160
 - **Warn if a bad certificate is received**
HKCU\SOFTWARE\Microsoft\Windows\CurrentVersion\Internet Settings\WarnonBadCertRecving = 1
 - **Warn if zone crossing is detected**
HKCU\SOFTWARE\Microsoft\Windows\CurrentVersion\Internet Settings\WarnonZoneCrossing = 1
 - **Warn if HTTP posts are redirected by the host**
HKCU\SOFTWARE\Microsoft\Windows\CurrentVersion\Internet Settings\WarnOnPostRedirect = 1

Disable Unneeded Services and Applications

These options disable services and applications that are unneeded by the MOVEit DMZ application and could pose a security threat, either by possibly allowing a server to be compromised, or by providing additional abilities to an attacker if the server is compromised. All of these options are recommended. The options to disable Outlook Express, FTP, and TELNET are left unchecked by default because they require the user to locate the executables for proper action to take place. The options should be enabled by the user for maximum security.

Disable Unneeded Services

This option marks the following services as Disabled, so they will not automatically start when Windows boots:

- **Dfs** - Distributed Filesystem
- **TrkWks** - Distributed Link Tracking Client
- **TrkSvr** - Distributed Link Tracking Server
- **RemoteRegistry** - Remote Registry Editing
- **LmHosts** - TCP/IP NetBIOS Helper Service

Note: If the Domain Member checkbox on the Welcome screen is checked, this service will NOT be disabled.

- **TapiSrv** - Telephony Service
- **TlntSvr** - Telnet Server
- **SharedAccess** - Internet Connection Sharing
- **cisvc** - Indexing Service
- **Fax** - Fax Service
- **Alerter** - Alerter Service
- **Browser** - Computer Browser
- **Messenger** - Messenger Service
- **Spooler** - Print Spooler
- **seclogon** - RunAs Services

Disable DHCP Client

Some administrators may want to disable unneeded services in order to lock down a system, but still require the DHCP client to set up their network interfaces. For this reason, disabling the DHCP client service is a separate option. Selecting this option will disable the DHCP Client service (DHCP).

This option should not be selected if the system relies on the DHCP Client service.

Note: This option will be off by default if the SecAuxNET program detects that all network interfaces on the server are using DHCP.

Disable DCOM

This option sets registry keys which disable DCOM-related services. The following registry changes are made when this option is enabled:

Note: DCOM is required for the MOVEit DMZ web farm support. If the server will be hosting a MOVEit DMZ web farm, this option should be disabled.

- **Disable DCOM**
HKLM\SOFTWARE\Microsoft\OLE\EnableDCOM = "N"
- **Disable Remote Connect**
HKLM\SOFTWARE\Microsoft\OLE\EnableRemoteConnect = "N"

Disable IIS WebDAV

This option sets a registry key which disables the WebDAV interface in the IIS service. The following registry change is made when this option is enabled:

- **Disable IIS WebDAV**
HKLM\SYSTEM\CurrentControlSet\Services\W3SVC\Parameters\DisableWebDAV = 1

Disable Outlook Express, FTP Client, and Telnet Client

These options disable execute access to the Outlook Express, FTP, and Telnet client executable files to prevent their use by anyone who happens to get access to the system. Access is still allowed for administrators to update these files, to prevent service packs and other patches from failing with Permission Denied errors.

Clicking each checkbox will inform the user of the nature of the option, and then prompt the user for the location of the file. In most cases, the default location determined by the utility will be correct, and the user will simply have to click OK.

For each of the selected options, all permissions to the associated file are removed, and then full access except execute permission is given to the Local Administrators group.

Required Services

Any services not disabled by the SecAuxNET program should be left in their default state, as they may be required by either the MOVEit DMZ installation process, or the MOVEit DMZ application itself. The following list of services should be checked against the target server's service list to make sure all necessary services are in their proper states. Note that services marked as "Manual" may not be running.

Service Name	Startup Type
Application Experience Lookup Service	Automatic
Application Layer Gateway Service	Manual
Application Management	Manual
ASP.NET State Service	Manual
Background Intelligent Transfer Service	Automatic
COM+ Event System	Automatic
COM+ System Application	Manual
Cryptographic Services	Automatic
DCOM Server Process Launcher	Automatic
Distributed Transaction Coordinator	Automatic
DNS Client	Automatic
Error Reporting Service	Automatic
Event Log	Automatic
File Replication	Manual
Help and Support	Automatic
HTTP SSL	Manual
IPSEC Services	Automatic

Service Name	Startup Type
IIS Admin Service	Automatic
Logical Disk Manager	Automatic
Logical Disk Manager Administrative Service	Manual
Microsoft Software Shadow Copy Provider	Manual
Net Logon	Manual
Network Connections	Manual
Network Provisioning Service	Manual
NT LM Security Support Provider	Manual
Performance Logs and Alerts	Automatic
Plug and Play	Automatic
Portable Media Serial Number Service	Manual
Protected Storage	Automatic
Remote Procedure Call (RPC)	Automatic
Remote Procedure Call (RPC) Locator	Manual
Removable Storage	Manual
Resultant Set of Policy Provider	Manual
Security Accounts Manager	Automatic
Server	Automatic
Smart Card	Manual
Special Administration Console Helper	Manual
System Event Notification	Automatic

Service Name	Startup Type
Task Scheduler	Automatic
Uninterruptible Power Supply	Manual
Volume Shadow Copy	Manual
Windows Audio	Automatic
Windows Installer	Manual
Windows Management Instrumentation	Automatic
Windows Management Instrumentation Driver Extensions	Manual
Windows Time	Automatic
Windows User Mode Driver Framework	Manual
WinHTTP Web Proxy Auto-Discovery Service	Manual
WMI Performance Adapter	Manual
Workstation	Automatic
World Wide Web Publishing Service	Automatic

Apply Recommended Windows Security Settings

These options apply recommended security settings to the system. Some settings are implemented differently based on the version of Windows the system is running, so radio selectors are provided to allow the user to choose the correct operating system. In most cases, the utility will be able to auto-detect the Windows version, and will automatically select the proper option.

Apply basic Windows security settings

When this option is selected, the following security settings are applied:

- **System Access**
 - MinimumPasswordAge = 0
 - MaximumPasswordAge = 90
 - MinimumPasswordLength = 8
 - PasswordComplexity = 1
 - PasswordHistorySize = 7
 - LockoutBadCount = 3
 - ResetLockoutCount = 30
 - LockoutDuration = 30
 - ClearTextPassword = 0
 - RequireLogonToChangePassword = 0
 - ForceLogoffWhenHourExpire = 0
 - LSAAnonymousNameLookup = 0
 - EnableAdminAccount = 1
 - EnableGuestAccount = 0
- **System Log**
 - MaximumLogSize = 8192
 - AuditLogRetentionPeriod = 0
 - RestrictGuestAccess = 1
- **Security Log**
 - MaximumLogSize = 8192
 - AuditLogRetentionPeriod = 1
 - RetentionDays = 7
 - RestrictGuestAccess = 1

- **Application Log**
 - MaximumLogSize = 8192
 - AuditLogRetentionPeriod = 0
 - RestrictGuestAccess = 1
- **Event Audit**
 - AuditProcessTracking = 0

Enable FIPS compliance mode

When this option is selected, the FIPS compliance security policy option will be enabled for the system. When this mode is active, Windows will prevent all applications from using Microsoft-provided cryptographic algorithms and ciphers that are not FIPS compliant, usually meaning they are older and less secure. This includes protocols like SSL 2.0 and SSL 3.0, hash algorithms like MD5, and ciphers like DES, RC2, and RC4. Only FIPS compliant protocols, algorithms, and ciphers will be used. MOVEit DMZ is fully supported when running with FIPS compliance mode enabled, and its use is recommended for high security environments.

Configure 256-bit AES as primary SSL encryption algorithm

This option reconfigures the Microsoft SSL encryption stack to prefer 256-bit AES encryption over weaker forms when negotiating secure SSL connections with clients. By default, the slightly less secure, but faster, 128-bit AES algorithm is preferred, for performance reasons. In high security environments, this option is recommended to provide maximum security in transit. The 256-bit AES option is FIPS 140-2 validated.

Apply Recommended NTFS Permissions

These options apply recommended NTFS permissions to the various directories created and used by MOVEit DMZ and its MySQL database server. This helps lock the application directories down to prevent unauthorized access to MOVEit DMZ data, files, and application libraries. The auto-detected major folder paths for both MOVEit DMZ and MySQL are displayed here for verification.

Because some systems may have a pre-existing MySQL server already installed, which may be accessed by other applications, the option to lock down the MySQL folder is separate from the option to lock down the MOVEit DMZ folders. For most installations, however, it is recommended that both options be selected.

For each folder, permissions are applied to two different groups. First, the Local Administrators group usually receives full access to the folders, to allow administrators to view and edit MOVEit DMZ files and perform upgrades. Second, a MOVEit System group is given the necessary permissions to operate the MOVEit DMZ application. In some cases, these permissions are limited, while in others, the group may receive full access. The MOVEit System group is created automatically by the SecAuxNET utility, and populated using the security template generated. Accounts necessary for the operation of the MOVEit DMZ web application and other services are made members of this group, and include the Local System account, the IWAM and IUSR accounts, and the ASPNET account.

Note: The MOVEit System group is automatically created by the SecAuxNET utility if the Apply NTFS option is enabled. The group is NOT created by the security template that SecAuxNET generates.

When these options are selected, the following NTFS permissions are applied (subfolders not listed are set to inherit permissions from parent folders):

Folder	Administrator Permissions	MOVEit System Permissions
(DMZ NonWeb Path)	FULL	READ/LIST/EXECUTE
(DMZ NonWeb Path)\Certs	FULL	FULL
(DMZ NonWeb Path)\Files	FULL	FULL
(DMZ NonWeb Path)\Logs	FULL	FULL
(DMZ NonWeb Path)\Scheduler	FULL	FULL
(DMZ NonWeb Path)\Util	FULL	NONE
(DMZ Web Path)	FULL	READ/LIST/EXECUTE
(DMZ Web Path)\images\instlogos	FULL	FULL

Folder	Administrator Permissions	MOVEit System Permissions
(DMZ Web Path)\templates	FULL	FULL
(DMZ ISAPI Path)	FULL	READ/LIST/EXECUTE
(DMZ Programs Path)	FULL	READ/LIST/EXECUTE
(MySQL Path)	FULL	FULL

Rename Administrator Account

This option renames the default Administrator account on the system to the provided name. This enhances security on the system by preventing attackers from accessing the system through a well-known account name.

When this option is selected, a new name must be entered in the provided text box. The utility will not allow the user to proceed until they have done so.

Configure IIS

The Configure IIS options will affect the way that IIS processes the specified website (normally "moveitdmz").

The options on this page will be applied to the website identified in **Website to change**. This is nearly always "moveitdmz", which is the default. MOVEit supports being installed in an IIS virtual directory. If you are using a virtual directory for the website, you need to enter the name of that directory in **Virtual directory**.

Configure generic IIS error pages

Use this option to configure custom error pages for IIS and ASP.NET. You can configure IIS and ASP.NET to return custom error pages in the case of HTTP errors. The custom pages contain slightly less information than the default Microsoft error pages. Returning minimal system information is considered a good security practice.

To configure these error pages, select the **Configure generic IIS error pages** option. Click **Next** to save your changes and continue.

When the MOVEit server has an unhandled exception error in response to an HTTP request, MOVEit will send the custom error page.

Prevent "clickjacking" by adding X-Frame-Options: DENY HTTP

Use this option to prevent "clickjacking," which is an attack that tries to embed code or a script in a browser page in an attempt to trick the user into clicking on something that appears to perform another function. This option, which is enabled by default, adds the X-Frame-Options: DENY HTTP to the HTTP header of your MOVEit web site.

Prevent IP address disclosure in Location: header when no "Host"

Use this option to prevent the MOVEit server IP address from being shown in HTTP responses, when the client request does not contain an HTTP:Host header value. This option, which is enabled by default, configures IIS to not show the server IP address in the Location header field. If you specify a name in the **Use Hostname** field, it will show that value in the HTTP response.

Configure SMB (Server Message Block) Signing

Server Message Block (SMB) is a file system access protocol used by Windows. SMB signing allows the recipient of SMB packets to confirm their authenticity and helps prevent "man in the middle" attacks against SMB. SMB signing has some performance cost, but it results in more secure communications.

Use this dialog to configure SMB signing for the entire computer. SMB signing can be configured to be not required (less secure) or required (more secure). SMB signing is configured separately for the system when acting as a client to other systems, or when acting as a server to other systems. Therefore, if you do not require SMB signing, it does not necessarily mean that SMB communications will not be signed; it will depend on the settings of the other Windows computer involved in the conversation.

To configure SMB signing, select **Configure SMB (Server Message Block) signing**. You can then select any combination of the options **Require SMB signing as a client** and **Require SMB signing as a server** to configure whether SMB signing is required by servers and clients on this computer.

Note: Some specially-configured, older Windows computers may not be able to access remote file systems on the MOVEit DMZ computer, or vice versa, if SMB signing is required. This is unlikely to affect the average MOVEit DMZ customer, but if you change these settings, be sure to test any mounted file systems before returning the system to production.

Final Steps

Once all the security template options have been selected, the final section will be shown, providing the operator some final options for how to proceed with the generated security template. Clicking the Finish button will cause the SecAuxNET utility to proceed with its actions.

Final Options

The following final processing options are available in this section:

Backup Registry

When selected, this option will cause the SecAuxNET utility to create a backup copy of the HKEY_LOCAL_MACHINE and HKEY_USERS registry hives before executing its changes. The backup file will be placed in the MOVEit DMZ program files directory. Operators who wish to undo the registry changes made by SecAuxNET can use the regedit.exe windows utility to load this backup file.

Apply Security Template

When selected, this option will cause the SecAuxNET utility to apply the generated security template to the local system. The secedit.exe windows utility is used to generate a security database file in the MOVEit DMZ program files directory based on the generated security template file. The same utility is then used to apply the settings in the security database file to the system.

Final Processes

After you click **Finish**, the SecAuxNET utility will attempt the following actions:

- 1 Backup Registry** - If the Backup Registry option was selected, the registry backup will be done first. See above for details. This step may take several minutes.
- 2 Apply Current User Registry Changes** - If the Optimize Windows Explorer and Optimize Internet Explorer options from the first options section are selected, these user-based options will be applied directly by the SecAuxNET utility. This is done because the security template mechanism is not able to apply changes to the HKEY_CURRENT_USER registry hive.
- 3 Create "MOVEit System" Group** - If the Apply NTFS option is selected, SecAuxNET will create a local user group called "MOVEit System". This group will be populated with the necessary local accounts to run the MOVEit DMZ application and will be given appropriate rights to the MOVEit DMZ and MySQL folders.
- 4 Generate Security Template File** - The template file content is generated now, based on the selected options from the previous sections.
- 5 Save Security Template File** - The template file content is saved to the local filesystem as the file "MOVEit_SecAux_SecurityPolicy.inf" in the MOVEit DMZ program files folder.

6 Apply Security Template - If the Apply Security Template option was selected, the template will be processed into a database file and then applied to the system. See above for details. This step may take several minutes.

Complete

The SecAuxNET utility should now be finished. If there were no problems, the program will exit upon completion of its last processing step.

If the security template was not applied to the setting, the operator may apply it manually by following this procedure:

- 1** Open a command prompt and cd to the MOVEit DMZ program files folder (by default C:\Program Files\MOVEit).
- 2** Run the command "secedit /analyze /db MOVEit_SecAux_SecurityPolicy.sdb /cfg MOVEit_SecAux_SecurityPolicy.inf". This will generate the security database file based on the settings in the security template file. The database will be stored in the file "MOVEit_SecAux_SecurityPolicy.sdb".
- 3** Run the command "secedit /configure /db MOVEit_SecAux_SecurityPolicy.sdb". This will apply the security options in the database file to the local system.

Once the security template settings have been applied to the local system, either automatically by the SecAuxNET utility or manually by the operator, a system restart will be required to make sure all the settings take effect.

Rolling Back Changes

This topic describes how to roll back changes made by the SecAuxNET utility, in the event that is necessary.

You can roll back some or all of the changes made by the utility, by using one of the procedures described here. The procedure used depends on which SecAuxNET changes you want to roll back:

- Optimize Windows - Restore the registry backup
- Disable Services - Restore OS backup
- Apply Windows Security Policy - Revert to old Security Policy
- Apply NTFS - Restore OS backup
- Rename Admin Account - Restore OS backup
- Config IIS - Restore web.config backup
- Config SMB - Revert to old Security Policy

Restore the Registry backup

If the option is selected, SecAuxNET will create a backup of the HKEY_LOCAL_MACHINE node of the Windows registry. This backup is written to the file MOVEit_SecAux_RegBackup.reg in the directory selected for MOVEit DMZ program files (by default C:\Program Files\MOVEit).

To load the original registry settings, simply double-click the registry backup file and click OK to the confirmation prompt. Once the registry backup has been loaded, reboot the server to make sure the changes are applied.

Restore Operating System

To restore your operating system from the latest backup, see you Windows documentation.

Revert to saved Security Policy

Perform the following steps to roll back the security policy changes applied by the SecAuxNET utility.

- 1 Open the Security Configuration and Analysis MMC Snap-in:
 1. Open a blank MMC console by clicking **Start > Run**, entering "mmc", and clicking **OK**.
 2. Click the Console menu and select **Add/Remove Snap-in**.
 3. On the Add/Remove Snap-in dialog, click **Add**.
 4. On the Add Standalone Snap-in dialog, select the Security Configuration and Analysis snap-in and click **Add**.
 5. On the Add Standalone Snap-in dialog, click **Close**, then on the Add/Remove Snap-in dialog, click **OK**.

- 2 If you have an existing security policy database file that you use for your systems, open that file and apply its settings now. Otherwise, to apply the standard security policy that newly installed Windows servers are configured with, follow these steps:
 1. Right-click the Security Configuration and Analysis node and select **Open database**.
 2. Open the MOVEit_SecAux_SecurityPolicy.sdb database file in the directory selected for MOVEit DMZ program files (by default C:\Program Files\MOVEit).
 3. Right-click the Security Configuration and Analysis node again and select **Import Template**.
 4. Select the "setup security.inf" file. If you do not see this file, try looking in C:\WINNT\Security\templates. Make sure the **Clear this database before importing** option is checked. Click **Open**.
 5. Right-click the Security Configuration and Analysis node again and select **Configure Computer Now**. Set a path for the log file which will be generated, and click **OK**.
- 3 Reboot the server to make sure changes are applied.

Restore web.config Backup

To restore the web.config file to the previously saved backup, copy the backup file to the C:\MOVEit\wwwroot folder (or the IIS virtual folder within wwwroot, if one is used) and overwrite the current web.config file.

CHAPTER 10

Installing a Local Version of MOVEit Documentation

The MOVEit documentation is now hosted on the Ipswitch web site, which allows for more frequent updates to the topics. The hosted version of the documentation will always be the most up-to-date version.

If you need to have the documentation installed locally, meaning on the MOVEit DMZ system, you can download the files and install locally as follows:

- 1 Log in to the Ipswitch Customer Portal.
- 2 Select the file named DMZ_LocalDoc8300.msi and download to the system on which you installed MOVEit.
- 3 Double-click DMZ_LocalDoc8300.msi to launch the installer and follow the on-screen prompts.

The documentation is installed on the local host. In MOVEit, in the navigation pane on the left, click **Online Manual**.