

**Using the WhatsUp Log Management Suite Services Manager**

WhatsUp Log Management Suite Service Manager ..... 2  
Configuring Syslog Ports..... 3

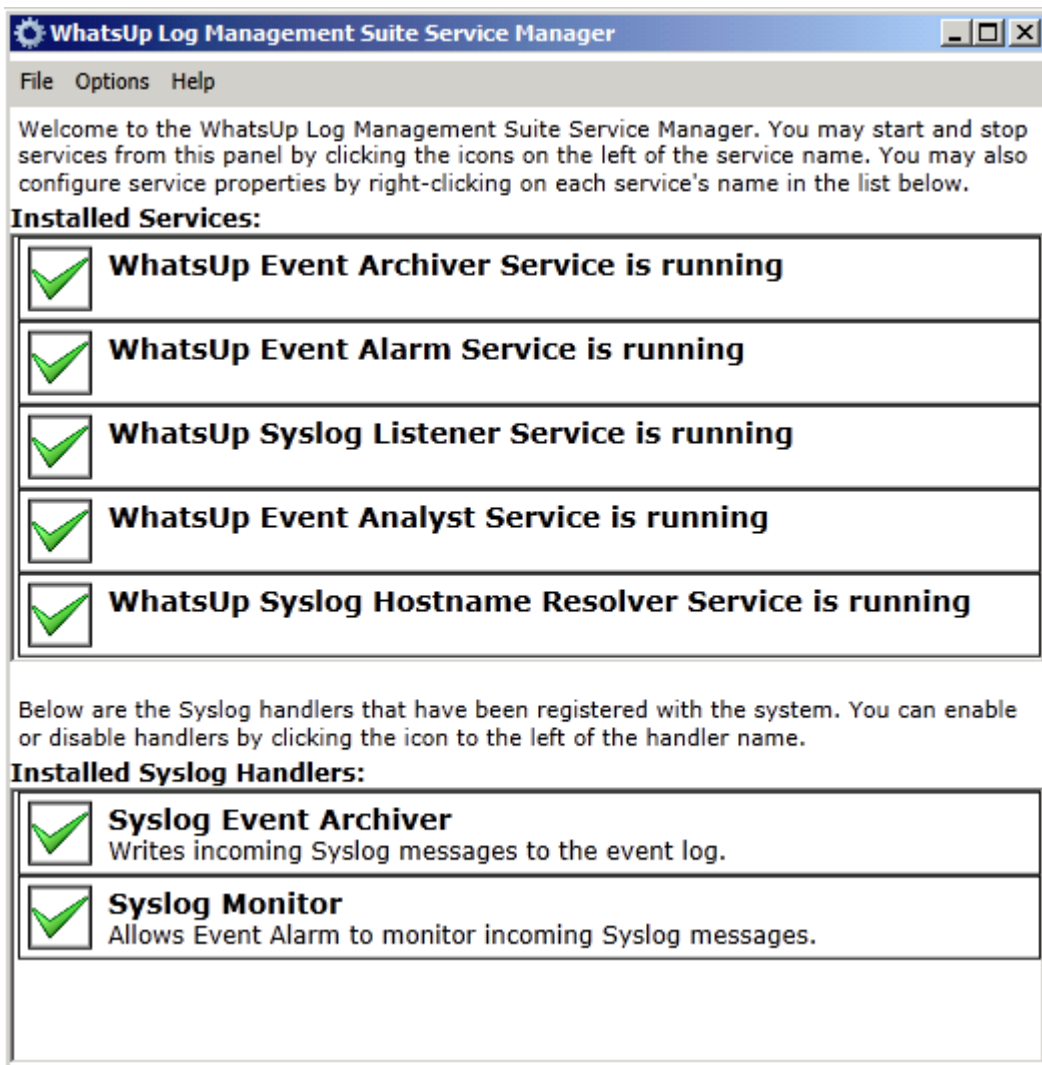
# Using the WhatsUp Log Management Suite Services Manager

## In This Guide

WhatsUp Log Management Suite Service Manager .....	2
Configuring Syslog Ports .....	3

## WhatsUp Log Management Suite Service Manager

The WhatsUp Log Management Suite Service Manager provides you with a snapshot of your installed services and installed syslog handlers.

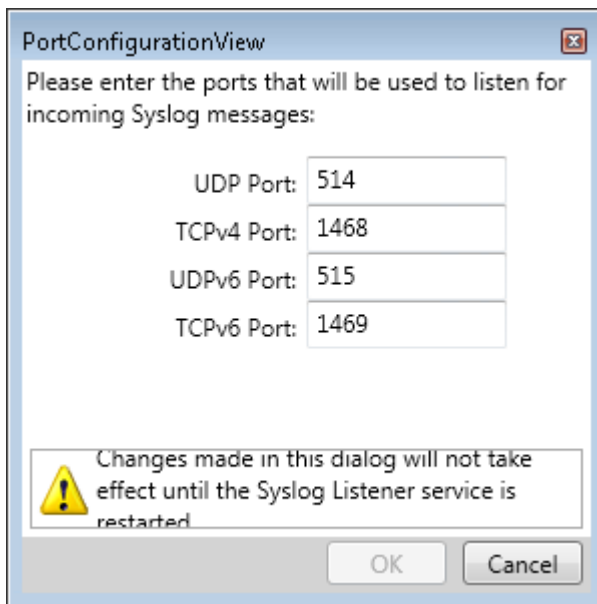


You can start and stop services by clicking the appropriate icon associated with a specific service. For example, if a service has a red X icon, this indicates that the service is currently in a stopped state. Click the red X icon to start the service. Follow the same process for enabling or disabling syslog handlers.

For information on configuring syslog ports, see the *Configuring Syslog Ports* (on page 3) help topic.

## Configuring Syslog Ports

To configure syslog ports, select the **Configure Syslog Reports** option from the **Options** menu.



The screenshot shows a dialog box titled "PortConfigurationView" with a close button in the top right corner. The main text reads: "Please enter the ports that will be used to listen for incoming Syslog messages:". Below this, there are four input fields with labels: "UDP Port: 514", "TCPv4 Port: 1468", "UDPv6 Port: 515", and "TCPv6 Port: 1469". At the bottom of the dialog, there is a warning icon (a yellow triangle with an exclamation mark) and a text box that says: "Changes made in this dialog will not take effect until the Syslog Listener service is restarted." Below the text box are two buttons: "OK" and "Cancel".

Type to port number you want to use to listen for incoming syslog messages.



**Note:** To make your changes active, you must restart the Syslog Listener service after you configure your syslog port settings.