



# Translation Guide

IPSWITCH

# WhatsUp Gold Translation Guide

About language support .....	1
Adding a language pack for the WhatsUp Web interface .....	1
Setting user rights for translation features.....	2
Adding a language to the Language Library.....	2
Translating using an XLIFF file .....	3
Translating dialogs using WhatsUp Gold.....	4
Setting the language for the Web Interface .....	6

## About language support

The WhatsUp Gold web interface ships with the English language pack, and can support multiple language packs. WhatsUp includes features that let you create a language pack and add it to the languages available to a web interface user.

The translation work can be done in either of two ways:

- Export the User Interface text (labels, button, text, pages headings) to an XLIFF (XML Localization Interchange File Format) file, then translate the text in the XLIFF file, then import the translated file back into the WhatsUp Gold language library.  
If you are working with an external translator, or translation company, this is the best way to approach the translation.
- Within the WhatsUp Gold web interface, you can translate the text on any dialog by using the dialog's associated Translation dialog. Each dialog and page in the WhatsUp web interface has an associated Translation dialog.



**Important:** The translation features apply to the web interface only. You will need to translate the help text separately.

## Adding a language pack for the WhatsUp Web interface

There are several tasks involved in implementing a language pack for the WhatsUp web interface.

- 1 Set user rights for Translation features.
- 2 Add the language to the Language Library.

## Translation Guide

- 3 Create the translation using one of the following methods:
  - Export the English strings to an XLIFF file, translate the text strings in this file to the selected language, then import the translated file into the Language Library. This will create a language pack with all dialogs translated.
  - Translate a selected dialog using the Translation dialog within WhatsUp. You can translate any or all dialogs using this method.



**Note:** Translations done using the Translation dialog are immediately added to the language pack. Translations done using the XLIFF file are added to the language pack by the Import function.

- 4 When translations are completed and added to the language pack, each user can select the language for their WhatsUp web interface, or the Admin can set the language for a user.



**Important:** Help is not included in the XLIFF file, therefore users using newly created languages will have broken help links. To fix this problem without actually translating the help, make a copy of the 1033 help directory and rename it to the new language's four digit Local ID. Place this directory in the same location as the 1033 directory.

## Setting user rights for translation features



**Note:** By default, only the Admin user has user rights for **Manage Users** and for **Translation**.

- 1 Select **Go**.
- 2 From the **WhatsUp** section, select **Configure > Manage Users**. The Manage Users dialog opens.
- 3 Select the user for whom you want to set user rights, then click **Edit**. The Edit User dialog opens.
- 4 Under User Rights, select **Translation**.
- 5 Click **OK**.

## Adding a language to the Language Library

Adding a language to the language library creates a home for the language pack, and must be done before you can add the translated user interface text.

- 1 In the WhatsUp Gold web interface, select **Go**. From the **WhatsUp** section, select **Configure > Translation**. The Translation Groups dialog opens.

## Translation Guide

- 2 Click the **Browse** button, to the right of the **Language** option. The Language Library dialog opens.
- 3 Click **New**. The New Language dialog opens.
- 4 Enter the language information:
  - **Locale ID (LCID)**. The 32-bit Locale ID (LCID) determined by Microsoft Windows. For example, the LCID for US English is 1033. For a complete listing of LCIDs by language, please see the List of supported locale identifiers in Word.
  - **Language**. List the title of the language. This title will be listed in the Language Library.
  - **Language code**. The language code (for example, "en" for English, "fr" for French) from the ISO specification, please see the list of ISO language codes.
- 5 Click **OK** to close the New Language dialog. An entry for the language now appears in the Language Library.
- 6 Click **Close** to close the **Language Library**. Click **Close** again to close Translation Groups.

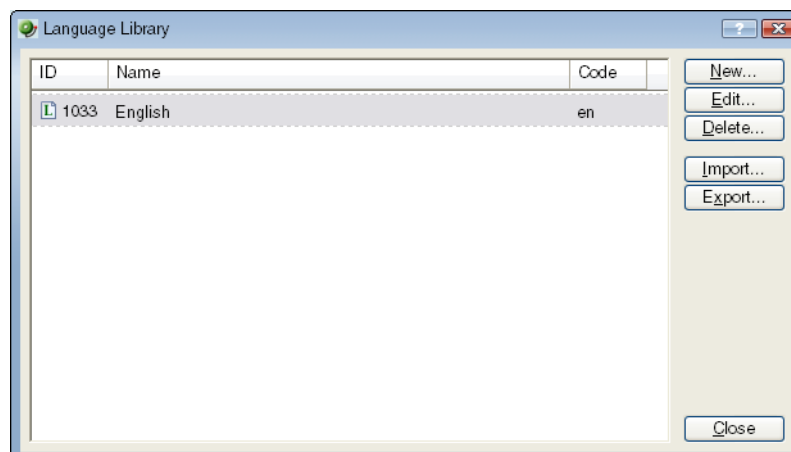
## Translating using an XLIFF file

Before you can translate the text for the web interface, you need to:

- Make sure you have user rights for Translation.
- Add the language to the Language Library.

**To export the text strings to an XLIFF file:**

- 1 Select **Go**.
- 2 From the **WhatsUp** section, select **Configure > Translation**. The Translation Groups dialog opens.
- 3 Select the **Browse** button next to the **Language** box. The Language Library appears.



- 4 Select English, then click **Export**. The File Download dialog opens.
- 5 Click **Save** and select a folder to download the file to. The file name is: 1033.xliff

## Translation Guide

### To translate the text strings:

You can send the 1033.xliff file to a translation company, or enter the translations using an XML editor.

Though it is optional, you should rename the translated XLIFF file with the appropriate language ID, for example, for a French translation, use the French locale ID: 1036.xliff

Also, within the XLIFF file, you need to change the target language. The exported file will show it as: `target-language="en"` You need to change it to the appropriate language code, for example, for a French translation, it would be `target-language="fr"`

### To Import an XLIFF file with the translated text strings:

- 1 Select **Go**. From the **WhatsUp** section, select **Configure > Translation**. The Translation Groups dialog opens.
- 2 Select the Browse button next to the **Language** box. The Language Library appears.
- 3 Select the import language (for example, French), then click **Import**. The Import for Language dialog opens.
- 4 Use the Browse button to select the XLIFF file that has the translated text. Click **OK**.



**Important:** When you run an import, this overwrites all information in the database for the selected language.

## Translating dialogs using WhatsUp Gold

Before you can translate the text for a dialog, you need to:

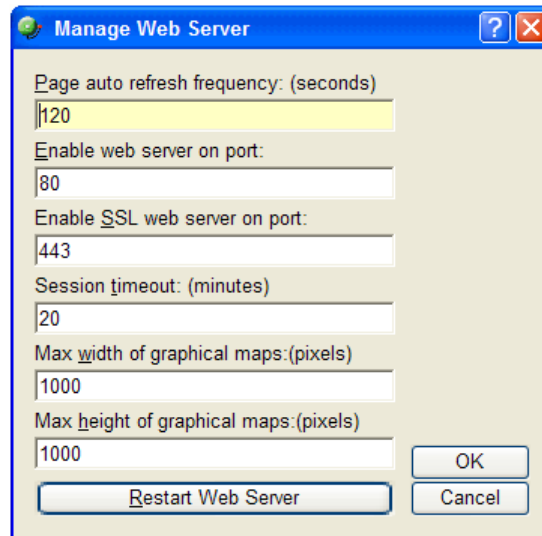
- Make sure you have user rights for Translation.
- Add the language to the Language Library.

### Translating the text for a dialog:

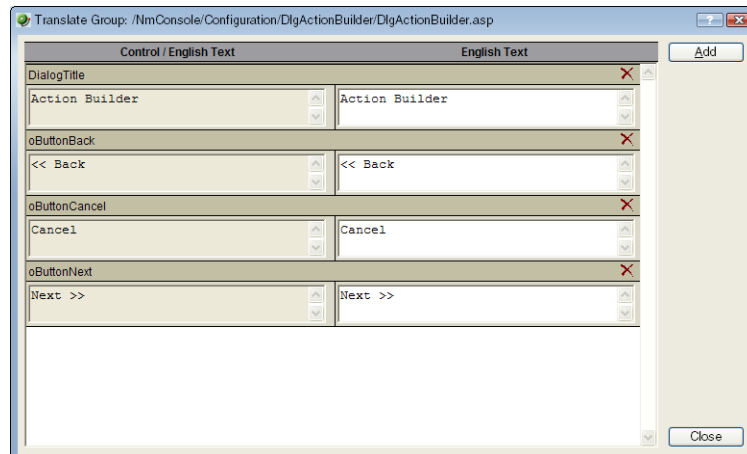
- 1 Log in to the WhatsUp web interface.
- 2 Select the language for which you want to add translations.
  - Select **Go**. From the **WhatsUp** section, select **Configure > Manage Users**, then select the current language.
  - Select the user, then click **Edit**. The Edit User dialog opens.
  - Select the **language**, then **Close** the dialog.

## Translation Guide

- 3 Open the dialog or page for which you want to enter a translation, for example, the Manage Web Server dialog:



- 4 Press this key sequence: **Ctrl + Shift + T**  
The Translation Dialog for the Manage Web Server dialog opens.



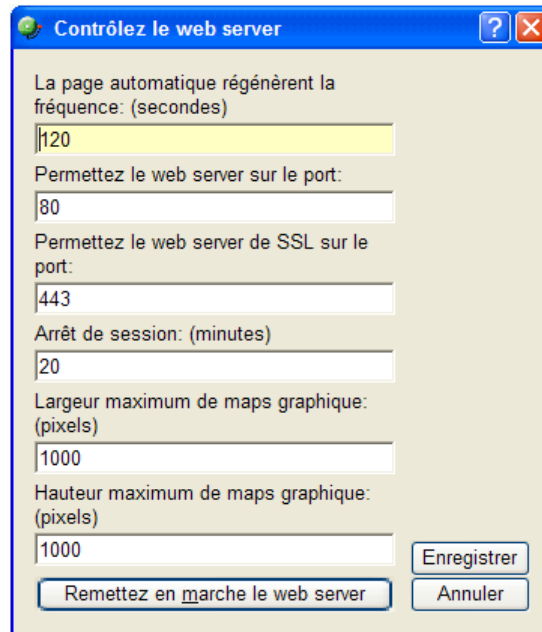
- 5 On the right panel of this dialog, enter the translations for each of the text strings. Also, enter any control key accelerators. The example shows the text strings translated to French. When finished adding the strings, click **OK**.



**Tip:** If you need to make changes later, you can always access this Translation dialog as in step 4.

## Translation Guide

The dialog opens with the French translations:



You can repeat these steps for any dialogs that you want to translate.



**Note:** You can also access the full list of dialogs that have been translated for a selected language by selecting **Go > Configure > Translation**.

## Setting the language for the Web Interface

For each user, the Administrator can set the language for the web interface session.



**Note:** To set the language, the user (Administrator) must have user rights for Manage Users.

- 1 From the web interface, click **GO**. The **GO** menu appears.
- 2 If the **WhatsUp** section is not visible, click **WhatsUp**. The **WhatsUp** section of the **GO** menu appears.
- 3 Select **Configure > Manage Users**.
- 4 Select the user for whom you want to set user rights, then click **Edit**. The **Edit User** dialog opens.
- 5 Select the **Language**. This setting persists for all subsequent sessions.
- 6 Click **OK** to close the **Edit User** dialog.
- 7 Click **Close** to close the **Manage Users** dialog.



If you have not translated the help files, and populated the help directory for the language, then opening help from the web interface will result in a "page not found" error.