



# IPSWITCH

**JUMPSTART SERIES**

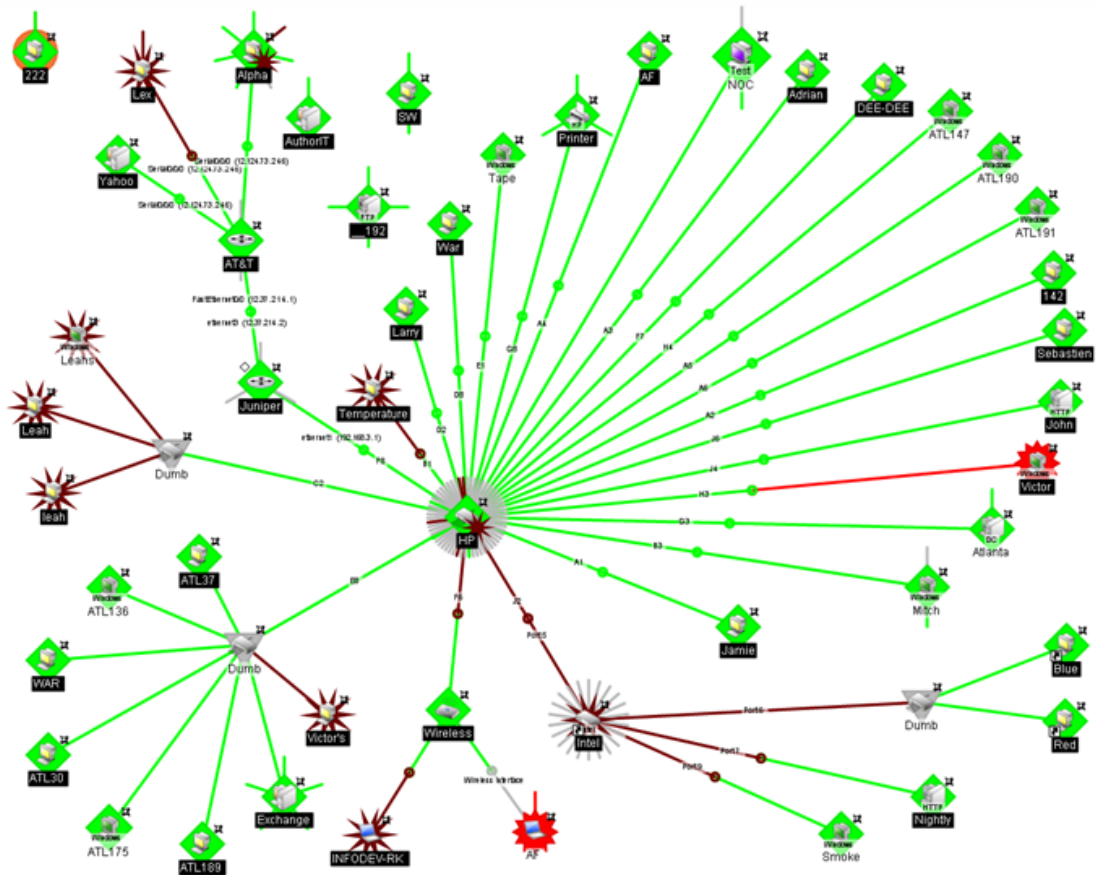
## **Configuring Maps**

Learn how to organize map objects into useful graphic illustrations of your network devices.

 **IPSWITCH**  
WhatsUpGold

# JumpStart: Configuring Maps

The WhatsUp Gold Map View displays graphical representations, or maps, of your network device groups. As in Device View, each device icon on the map provides information about the device's type and status. Map View can also display the status of network interfaces, and can provide visual indications of polling dependencies.



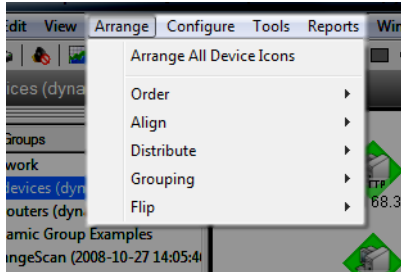
As you discover devices on your network, WhatsUp Gold creates a map of the initial discovery device group. You can configure this map, or create other device groups and configure maps for these groups as you see fit. Regardless of the groups for which you decide to configure maps, you can configure all maps in a variety of ways:

- Organize map objects
- Add annotations to a map
- Use link lines to connect map devices
- Select display options for the objects on a map

## Organizing maps

The organization of a map is crucial for its visual effectiveness.

The console's Arrange Menu allows you to organize map devices and objects in a number of ways using its various options.



- The **Order** commands allow you to move annotations to the background or foreground of the map image.
- The **Align** commands allow you to arrange annotations or device icons so they share a common edge or centerline.
- The **Distribute** commands allow you to space device icons or annotations evenly along a line. You can arrange icons in a radial format, in rows, or by links.
- The **Grouping** commands allow you to group or map annotations so that they can be arranged or moved as a unit.
- The **Flip** commands allow you to transpose the location of two selected annotations.

For more information, see *Using the WhatsUp Gold console menus* in the User Guide.

## Adding annotations

Annotations are graphical objects that let you customize a map. You can add text, shapes, lines, and images to visually organize a set of devices.

Available WhatsUp Gold map annotations include:

- Circles
- Lines
- Rectangles
- Text
- Network clouds
- Polygons
- Images

The Annotation toolbar is located at the top middle of the WhatsUp Gold console Map View.



## JumpStart: Configuring Maps

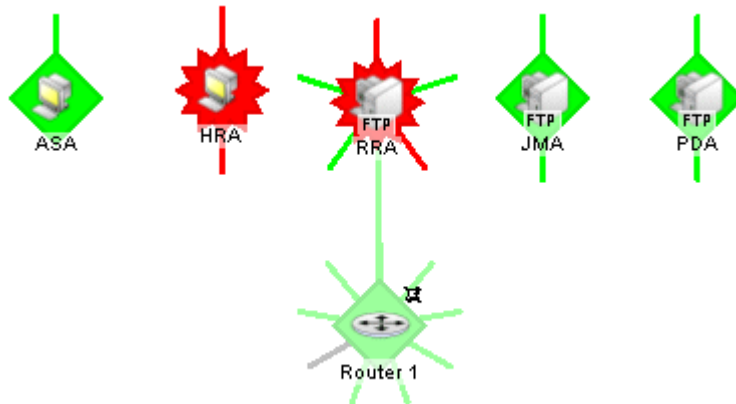
Use this toolbar to add and manipulate map annotations. For more information, see *Adding annotations to a map* in the User Guide.



**Tip:** You can import an image over which to arrange map device icons. For example, import an image of your office layout and place map devices in their respective locations. To import an image to use in a map, click the Image button  on the Annotation toolbar and then browse to the image file you would like to import.

## Using link lines

Link lines are used to graphically illustrate the network link, or Interface service, between two devices. Link lines can also show the status of device services via associated active monitors.



You can set up link lines manually in map view using the **Link To** command on the right-click menu, automatically during device discovery using SNMP ScartScan, and automatically by discovering active monitors on a device.

For more information on link lines, see *Using link lines* in the User Guide.

## Selecting display commands

Display commands let you change the visual representation of a map, and add annotations that help you monitor dependencies and active monitors.

The following map display commands are available:

- **Device icons.** By default, the map displays icons for each device; you can alternatively choose to display dots or nodes.
- **Polling dependency arrows.** If map devices are dependent on one another, by default, the map displays an arrow to illustrate these dependencies. You can alternatively opt to not display dependencies.

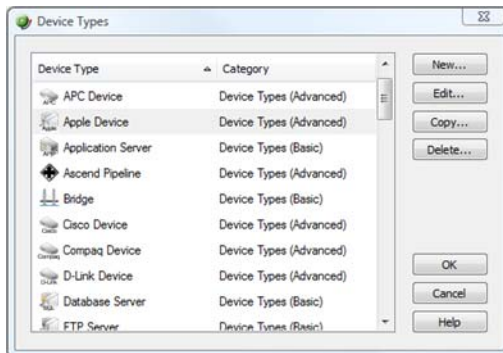
## JumpStart: Configuring Maps

- **Unconnected links.** You can display short lines for unconnected links, or devices and/or monitors that are not linked to other devices.
- **Snap to grid.** You can automatically align objects along a grid.
- **Clip device names.** You can display device names that are clipped after the first space or period.
- **Wrap device names.** You can wrap long device names.

For more information on map display options, see *Using map display options* in the User Guide.

## Choosing device type icons

An important display option is device type icons. These icons represent network devices on maps. WhatsUp Gold provides device icons for more than 40 device types with an option to create additional custom device types.



For more information about device types, see *Selecting device types* in the User Guide.

## For more information

Following are information resources for WhatsUp Gold. This information may be periodically updated and available on the *WhatsUp Gold Web site* (<http://www.whatsupgold.com/support/index.asp>).

- **Release Notes.** The release notes provide an overview of changes, known issues, and bug fixes for the current release. The notes also contain instructions for installing, upgrading, and configuring WhatsUp Gold. The release notes are available at **Start > Programs > Ipswitch WhatsUp Gold > Release Notes** or on the *WhatsUp Gold web site* (<http://www.whatsupgold.com/wug1231relnotes>).
- **Application Help for the console and web interface.** The console and web help contain dialog assistance, general configuration information, and how-to's that explain how to use the features. The Table of Contents is organized by functional area, and can be accessed from the main menu or by clicking **Help** in the console, or the **?** icon in the web interface.

- **User Guide.** This guide describes how to use the application out-of-the-box. It is also useful if you want to read about the application before installing. To view or download the User Guide, select **Help > WhatsUp Gold User Guide** or download it from the *WhatsUp Gold web site* (<http://www.whatsupgold.com/wug1231ug>).
- **Additional WhatsUp Gold guides.** For a listing of current and previous guides and help files available for WhatsUp Gold's multiple versions, see the *WhatsUp Gold web site* (<http://www.whatsupgold.com/support/guides.aspx>).
- **WhatsUp Gold optional plug-ins.** You can extend the core features of WhatsUp Gold by installing plug-ins. For information on available plug-ins and to see release notes for each plug-in, see *WhatsUp Gold plug-ins documentation* (<http://www.whatsupgold.com/wugplugins>).
- **Licensing Information.** Licensing and support information is available on the *MyIpswitch licensing portal* (<http://www.myipswitch.com/>). The web portal provides enhanced web-based capabilities to view and manage Ipswitch product licenses.
- **Knowledge Base.** Search the Ipswitch Knowledge Base of technical support and customer service information. The knowledge base is available on the *WhatsUp Gold web site* (<http://www.whatsupgold.com/wugTechSupport>).
- **User Forum.** Use the online user group forums to interact with other WhatsUp Gold users to share helpful information about the application. The User Forums are available on the *WhatsUp Gold web site* (<http://forums.ipswitch.com/>).

## **Copyright notice**

©1991-2008 Ipswitch, Inc. All rights reserved.

This document, as well as the software described in it, is furnished under license and may be used or copied only in accordance with the terms of such license. Except as permitted by such license, no part of this publication may be reproduced, photocopied, stored on a retrieval system, or transmitted, in any form or by any means, electronic, mechanical, recording, or otherwise, without the expressed prior written consent of Ipswitch, Inc.

The content of this document is furnished for informational use only, is subject to change without notice, and should not be construed as a commitment by Ipswitch, Inc. While every effort has been made to assure the accuracy of the information contained herein, Ipswitch, Inc. assumes no responsibility for errors or omissions. Ipswitch, Inc., also assumes no liability for damages resulting from the use of the information contained in this document.

IMail, the IMail logo, WhatsUp, the WhatsUp Gold logo, WS\_FTP, the WS\_FTP logos, Ipswitch, and the Ipswitch logo are trademarks of Ipswitch, Inc. Other products and their brands or company names, are or may be trademarks or registered trademarks, and are the property of their respective companies.

This document was published on Thursday, November 13, 2008 at 14:55.