



# IPSWITCH

**JUMPSTART SERIES**

## **Viewing Network Data**

Learn how to harness the Device view, Map view, and reports to give you powerful insight into your network's performance.



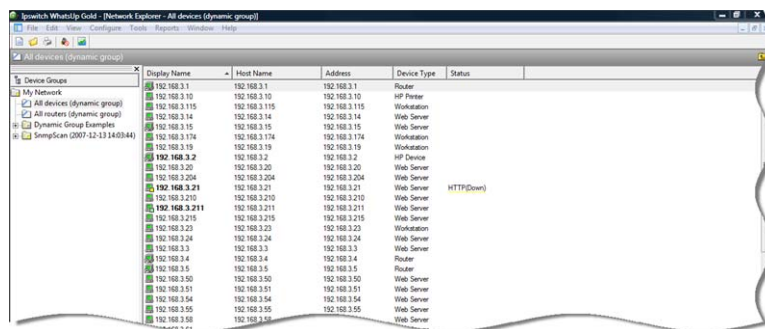
# JumpStart: Viewing network data

After you have configured your network and the appropriate monitors and actions, you can view the important data WhatsUp Gold is gathering for you. There are several areas of the product where you can view network data:

- The Device View
- Map view
- Workspace views and reports
- Full reports

## Device View

With a similar look and feel to Windows Explorer, the Device View gives you another option to help you keep your complex network organized and performing properly. In this view, devices are organized by device group, and appear in the list in alphabetical order based on the name of the folder or the display name of the device.



Each device's icon provides information about its device state and the state of the monitors associated to that device. For information on device icons, see *About device icons* in the WhatsUp Gold User Guide.

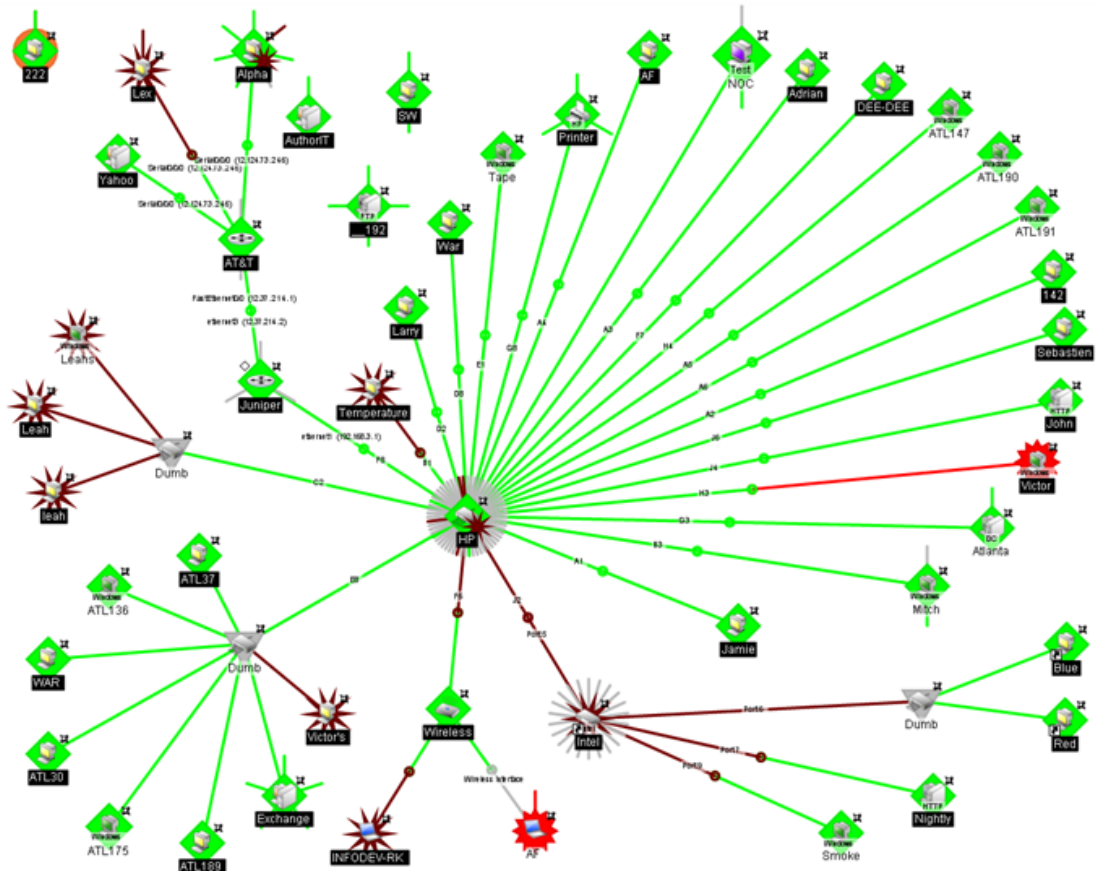
The Status column lists any active monitor that is in a non-responding state, and the monitor's current state.

When the entry in the Device list is a group folder, the Status column shows the number of devices in the group with a breakdown of how many devices are in each device state.

For more information on the Device View, see *About the Device View* in the WhatsUp Gold User Guide.

## Map View

The WhatsUp Gold Map View displays the maps you created as you configured and organized your network. As in Device View, each device icon on the map provides information about the device's type and status. Map View can also display the status of network interfaces, and can provide visual indications of polling dependencies.



There is an enormous amount of flexibility in the way you can use Map View to increase the visibility of your network devices and their status information.

For more information on the Map View, see *About the Map View* and *Using Maps* in the WhatsUp Gold User Guide.



**Tip:** The Map View workspace report is a smaller version of the Map View that can be placed in workspace views for broader visibility of your network's topology. You can create maps for smaller segments, or subgroups, of your network and include these maps in workspace views dedicated to a specific segment.

# Workspace views and reports

The WhatsUp Gold Home workspace is the first screen you see after logging in to the web interface. This is your personal, customizable Home portal, or *workspace*.



Workspaces allow you to view a lot of data at one time, on one screen. Because you can configure multiple views, it's easy to check-in on various areas of your network as you switch between views.



**Tip:** You can easily switch from one workspace view to another using the **Workspace View** list control in the top right of a workspace view.

Many of the workspace reports in each workspace view link to WhatsUp Gold full reports. For example, clicking a device entry in the Devices with Down Active Monitors workspace report takes you to the Device Status report for that device. This feature is useful for troubleshooting problems, and viewing more in-depth detail about the entry on which you click.

For more information about workspaces, see *Understanding and Using Workspaces* in the WhatsUp Gold User Guide.

For more information about workspace reports, see *Using Workspace Reports* in the WhatsUp Gold User Guide.

## Full reports

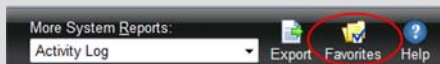
In WhatsUp Gold, reports are used to troubleshoot and monitor performance and historical data that is collected during the operation of the application. Larger than workspace reports, full reports give you a broader data view, which can be useful in pin-pointing the time an event occurred.



Reports are viewed from the WhatsUp Gold Reports tab. You can also access the WhatsUp Gold NetFlow Monitor full reports by using the **NetFlow Reports** Quick Link at the bottom of the Reports tab.



**Tip:** An easy way to access the WhatsUp Gold reports most important to you is by adding them to your list of Favorites. If while viewing a report you decide to add it to your list of favorites, click the **Favorites** button on the Report toolbar located in the upper right side of the report.



For more information on adding and removing reports to your list of Favorite Reports, see *Adding a report to your list of Favorites in the WhatsUp Gold User Guide*.

For more information about full reports, see *Using Full Reports* in the WhatsUp Gold User Guide.

## For more information

Following are information resources for WhatsUp Gold. This information may be periodically updated and available on the *WhatsUp Gold Web site* (<http://www.whatsupgold.com/support/index.asp>).

- **Release Notes.** The release notes provide an overview of changes, known issues, and bug fixes for the current release. The notes also contain instructions for installing, upgrading, and configuring WhatsUp Gold. The release notes are available at **Start > Programs > Ipswitch WhatsUp Gold > Release Notes** or on the *WhatsUp Gold web site* (<http://www.whatsupgold.com/wug123relnotes>).
- **Application Help for the console and web interface.** The console and web help contain dialog assistance, general configuration information, and how-to's that explain how to use the features. The Table of Contents is organized by functional area, and can be accessed from the main menu or by clicking **Help** in the console, or the **?** icon in the web interface.
- **User Guide.** This guide describes how to use the application out-of-the-box. It is also useful if you want to read about the application before installing. To view or download the User Guide, select **Help > WhatsUp Gold User Guide** or download it from the *WhatsUp Gold web site* (<http://www.whatsupgold.com/wug123ug>).
- **Additional WhatsUp Gold guides.** For a listing of current and previous guides and help files available for WhatsUp Gold's multiple versions, see the *WhatsUp Gold web site* (<http://www.whatsupgold.com/support/guides.aspx>).
- **WhatsUp Gold optional plug-ins.** You can extend the core features of WhatsUp Gold by installing plug-ins. For information on available plug-ins and to see release notes for each plug-in, see *WhatsUp Gold plug-ins documentation* (<http://www.whatsupgold.com/wugplugins>).
- **Licensing Information.** Licensing and support information is available on the *MyIpswitch licensing portal* (<http://www.myipswitch.com/>). The web portal provides enhanced web-based capabilities to view and manage Ipswitch product licenses.
- **Knowledge Base.** Search the Ipswitch Knowledge Base of technical support and customer service information. The knowledge base is available on the *WhatsUp Gold web site* (<http://www.whatsupgold.com/wugTechSupport>).
- **User Forum.** Use the online user group forums to interact with other WhatsUp Gold users to share helpful information about the application. The User Forums are available on the *WhatsUp Gold web site* (<http://forums.ipswitch.com/>).

## **Copyright notice**

©1991-2008 Ipswitch, Inc. All rights reserved.

This document, as well as the software described in it, is furnished under license and may be used or copied only in accordance with the terms of such license. Except as permitted by such license, no part of this publication may be reproduced, photocopied, stored on a retrieval system, or transmitted, in any form or by any means, electronic, mechanical, recording, or otherwise, without the expressed prior written consent of Ipswitch, Inc.

The content of this document is furnished for informational use only, is subject to change without notice, and should not be construed as a commitment by Ipswitch, Inc. While every effort has been made to assure the accuracy of the information contained herein, Ipswitch, Inc. assumes no responsibility for errors or omissions. Ipswitch, Inc., also assumes no liability for damages resulting from the use of the information contained in this document.

IMail, the IMail logo, WhatsUp, the WhatsUp Gold logo, WS\_FTP, the WS\_FTP logos, Ipswitch, and the Ipswitch logo are trademarks of Ipswitch, Inc. Other products and their brands or company names, are or may be trademarks or registered trademarks, and are the property of their respective companies.

This document was published on Wednesday, October 01, 2008 at 11:29.