



IPSWITCH

## How to configure a workspace in WhatsUp Gold v11

*Workspaces in WhatsUp Gold are user-specific portals with multiple views. Each view is configurable to include workspace reports specific to a user's personal monitoring needs.*

# Learning about workspaces

The WhatsUp Gold v11 Home workspace is the first screen you see after logging in to the web interface. This is your personal, customizable Home portal, or workspace

Workspaces in WhatsUp Gold are designed to be user-specific, and are configurable to include workspace reports specific to users' needs. Workspaces contain multiple *views* that let you organize various workspace reports by the type of information they display. When you begin customizing your workspace views, you should consider the types of information you need to view most often, the devices in which you need to pay closest attention, and what level of detail you want to monitor through a particular workspace view. You should also take into consideration the type of workspace, and the types of workspace reports you can add to a particular workspace type.

## Device and Home workspaces

**Device** workspaces are limited to display only Device-level workspace reports. Only workspace reports specific to a single device can be placed on a device workspace. When you change the device-in-context, the reports displayed show data corresponding to the newly selected device.

**Home** workspaces can display both Home- and Device-level workspace reports. You can place any workspace report on a Home workspace; mixing and matching summary, group, and device-specific data.

Changes that you make to a workspace view only affect your user account. If you decide to completely change all of the workspace views under your account, your user account will be the only account affected by these changes.

# About pre-configured workspaces

Ipswitch comes to you with 3 pre-configured workspaces:

- Home workspace
- Device Status workspace
- Top 10 workspace

## The Home workspace

The WhatsUp Home workspace is the first screen that you see after you log in to the web interface. Referred to as "Home," this universal workspace is designed to house the network information that you need most visible.



Home contains three pre-configured "views" that you can customize to your own specifications:

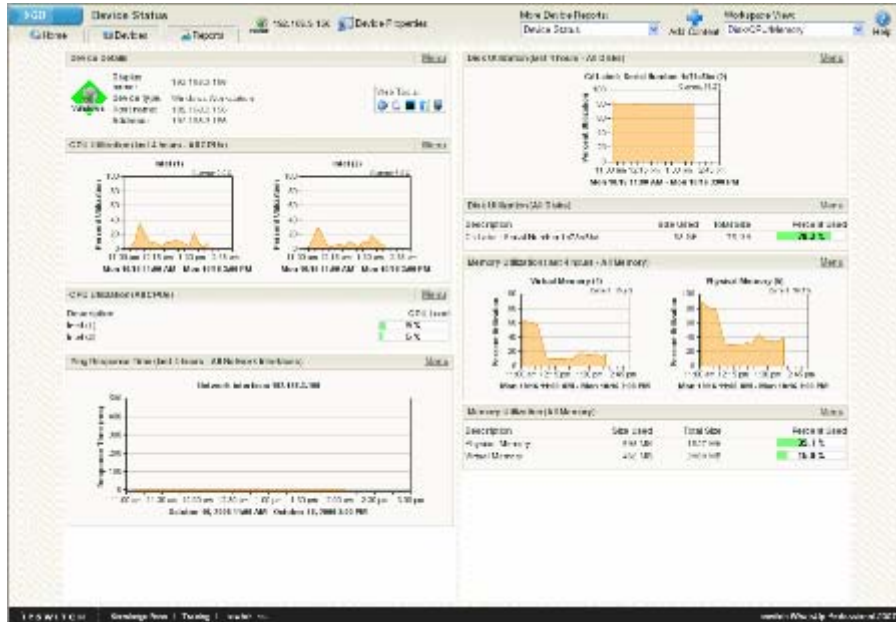
- General
- Problem Areas 1
- Problem Areas 2

Each workspace view includes several default workspace reports that you can decide to keep, alter, remove. You can also add other workspace reports to these views.

You can create your own workspace views for the Home workspace through the Manage Workspace Views (on page 4) dialog.

## The Device Status workspace

The WhatsUp Gold Device Status workspace displays the Device Status full report for a network device. You can change the device-in-context, but the workspace reports in each workspace view remain the same.



The Device Status workspace also has several pre-configured workspace views:

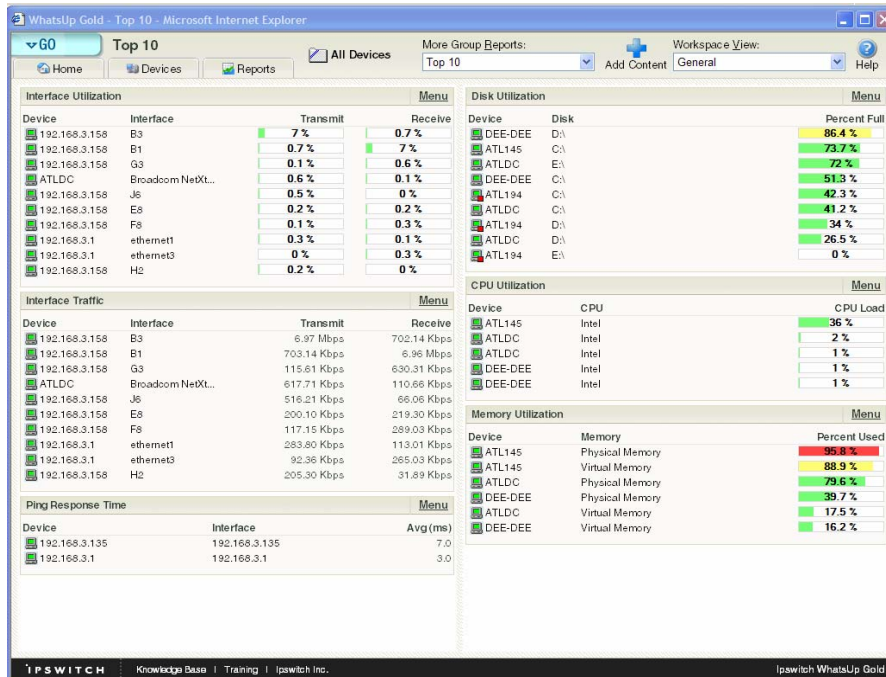
- General
- Disk/CPU/Memory
- Problem Areas
- Router/Switch/Interface

## The Top 10 workspace

The WhatsUp Gold Top 10 workspace displays the Top 10 full report for your network devices. The Top 10 full report is a collection of workspace reports that focus on the current health of your network devices. It is pre-configured to include workspace reports that display data on the top network devices by:

- Interface utilization
- Interface traffic
- Ping response time
- Disk utilization
- CPU utilization

- Memory utilization

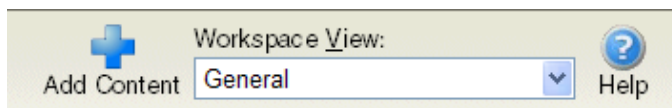


Unlike the Home and Device Status workspaces, the Top 10 workspace is designed with only the General workspace view. You can customize the general view in the same way you can other workspace views by removing the default workspace reports and/or adding other Top 10 and Threshold workspace reports.

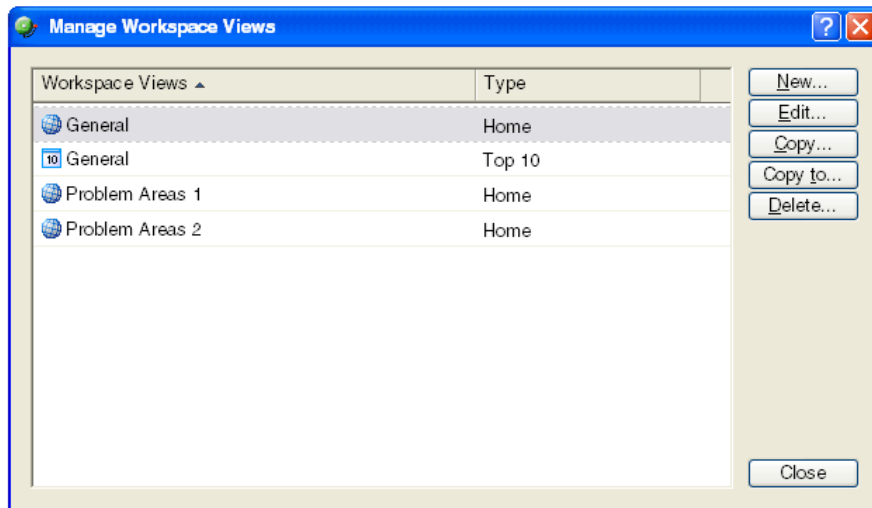
## Managing workspace views

WhatsUp Gold gives you the ability to create more of your own workspace “views” to use along with the pre-configured views. You can create as many as you feel necessary to organize your system for efficient reporting. You can also edit these views as needed.

From the **Workspace View** drop-down menu, select **Manage Workspace Views**.



In the Manage Workspace Views dialog, you can create new workspace views, and edit, copy, or delete an existing workspace view.



- Click **New** to configure a new workspace.
- Select an existing workspace view and click **Edit** to change the current configuration of a workspace.
- Double-click an existing workspace to change its configuration.
- Select a workspace view, then click **Copy** to make a copy of that workspace and add it to the list.
- Select a workspace view, then click **Copy to** to copy an existing workspace to another user.
- Select a workspace monitor view, then click **Delete** to remove it from the list.

#### To create a new workspace view:

- 1 From the Manage Workspace Views dialog, select **New**. The New Workspace View dialog opens.
- 2 Enter the appropriate information in the following fields:
  - **View name.** Enter a name for the workspace view.
  - **View type.** Choose a type for the workspace view from the drop-down menu.
  - **Column count.** Enter a value for the number of columns you wish to have in the new workspace view. Keep in mind, the more columns you include, the smaller the data displayed inside a workspace.
  - Enter a value in pixels for each of the workspace columns.
- 3 Click **OK** to save changes.

#### To edit a workspace view:

- 1 From the Manage Workspace Views dialog, select **Edit**. The Edit Workspace View dialog opens.
- 2 Enter the appropriate information in the following fields:
  - **Workspace name.** The workspace title as it appears in the Workspace Library.

- **Workspace type.** The workspace type as it appears in the Workspace Library (Home or Device).



**Note:** Workspace view types cannot be edited after a view is created.

- **Column count.** The number of columns in the workspace.
  - **Column width.** The width of each column in the workspace in pixels.
- 3 Click **OK** to save changes.

**To copy an existing workspace view:**

- 1 From the Manage Workspace Views dialog, select **Copy**. The Edit Workspace View dialog opens.
- 2 Enter the appropriate information in the following fields:
  - **Workspace name.** The workspace title as it appears in the Workspace Library.
  - **Column count.** The number of columns in the workspace.
  - **Column width.** The width of each column in the workspace in pixels.
- 3 Click **OK** to save changes.

**To copy a workspace view to another WhatsUp Gold user:**

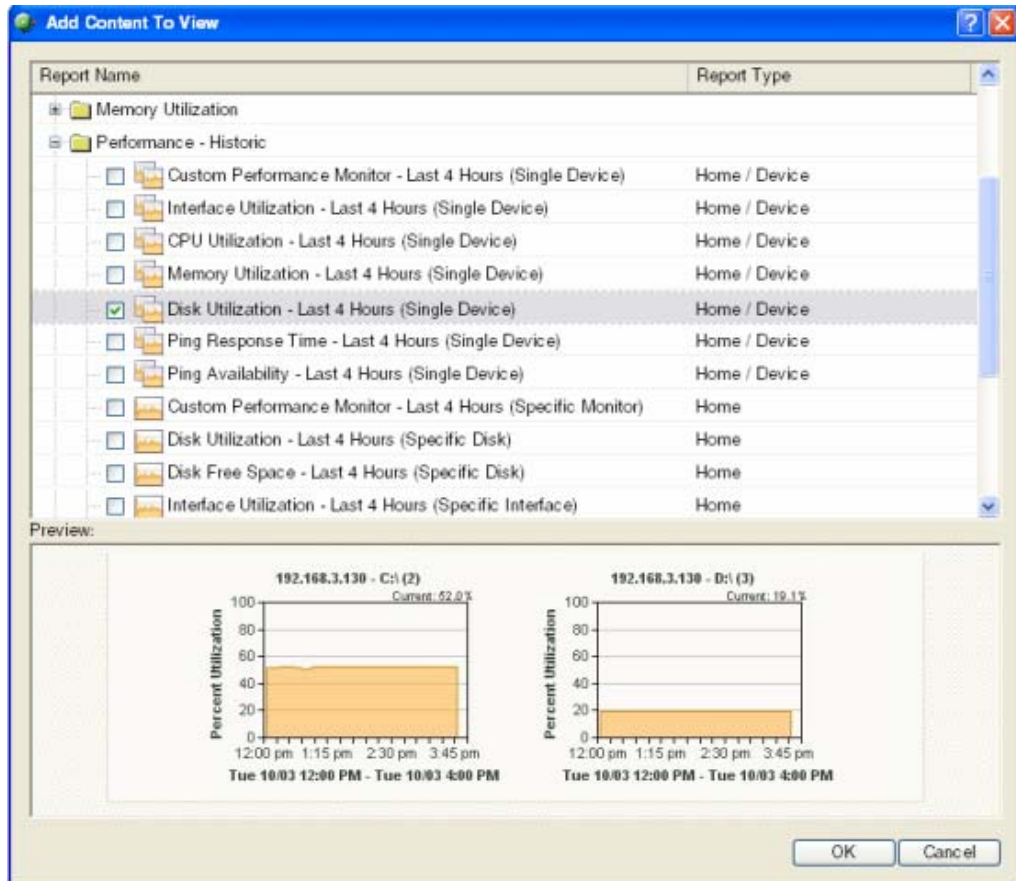
- 1 From the From the Manage Workspace Views dialog, select **Copy to**. The Edit Workspace View dialog opens.
- 2 Enter the appropriate information into the following fields:
  - **Copy to user.** Select a user account from the drop-down menu in which to copy the workspace view.
  - **View name.** The name of the workspace view as it will appear in the Workspace Library.
- 3 Click **OK** to save.

**To delete a workspace view:**

- 1 From the From the Manage Workspace Views dialog, click **Delete**.
- 2 Click **OK** on the dialog that follows.

# Select Workspace Reports

Use the Select Workspace Reports dialog to add one or multiple workspace reports to a workspace.



To view the workspace reports in each category:

- 1 Click the + button next to a category title, then select the workspace report(s) you want to add by clicking inside the box to the left of each workspace report title. A preview image for each workspace report is displayed at the bottom of the dialog.
- 2 Click **OK** to save changes.

## About Ipswitch

Founded in 1991, Ipswitch, Inc., develops easy-to-use, affordable, software products that extend mission-critical IT resources for businesses and improve efficiency for consumers. Its product family includes WS\_FTP Professional, the world's most popular FTP client; WS\_FTP Server with 128-bit SSL encryption, the first industrial-strength, full-featured FTP server for Windows NT/2000/XP; WhatsUp Gold, a leading network mapping, monitoring, notification and reporting tool; IMail Anti-Virus, an add-on product powered by Symantec's CarrierScan™; and Ipswitch Instant Messaging, a secure Instant Messaging solution specifically designed for businesses.