



IPSWITCH

Using Dependencies

WhatsUp Gold lets you set dependencies on a device, so when the device state changes, polling of other devices is dependent upon and determined by the status of the device that changed.

Dependencies overview

By default, WhatsUp Gold polls all devices and active monitors in your device list, unless you manually turn off polling for the system as a whole, or at the device and monitor level. The dependency feature gives you the ability to avoid turning off polling to devices, and instead makes polling dependant on the status of another device's active monitor(s) in your database.

Setting dependencies on one device's active monitors will place another device up or down depending on the type of dependency you configure.

There are two types of dependencies:

- **Up Dependency** can be thought of as describing that something is “behind” something else. The dependant device will only be polled if the device "in front" of it is up.
- **Down Dependency** can be thought of as describing that something is “in front of” something else. The dependant devices in front will not be polled unless the device further down the line is down.

Example

If you make devices behind a router, up dependant on the router's ping active monitor, those devices will not be polled unless the dependent router's ping attempts are successful. If the router's ping active monitor fails, the devices behind the router are placed in the unknown state. Without the dependency, the devices behind the router would fire off actions when they became unreachable due to the router's failed ping attempts. With the dependency, only actions on the router will fire.

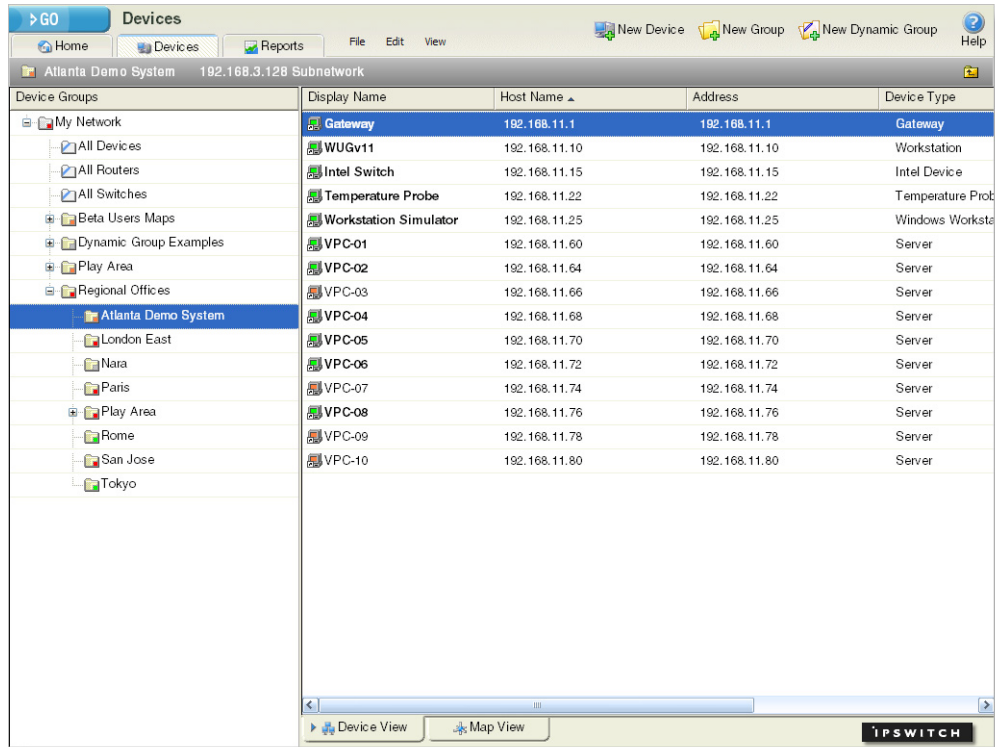
Setting Dependencies

There are two ways to set dependencies in WhatsUp Gold:

- Using Device Properties
- Using the Map View

Setting dependencies in the Device Properties:

- 1 Double-click a device in My Network view (**View > Device View**). The Device View opens.

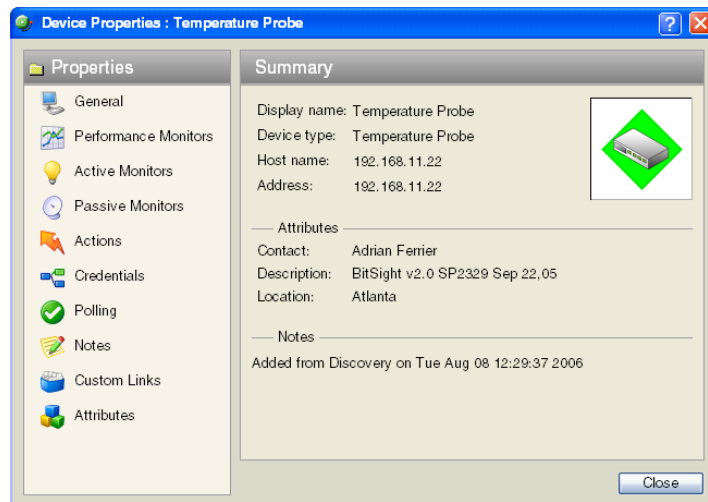


- 2 Double-click a device.

In the console, the Device Properties dialog opens.

- or -

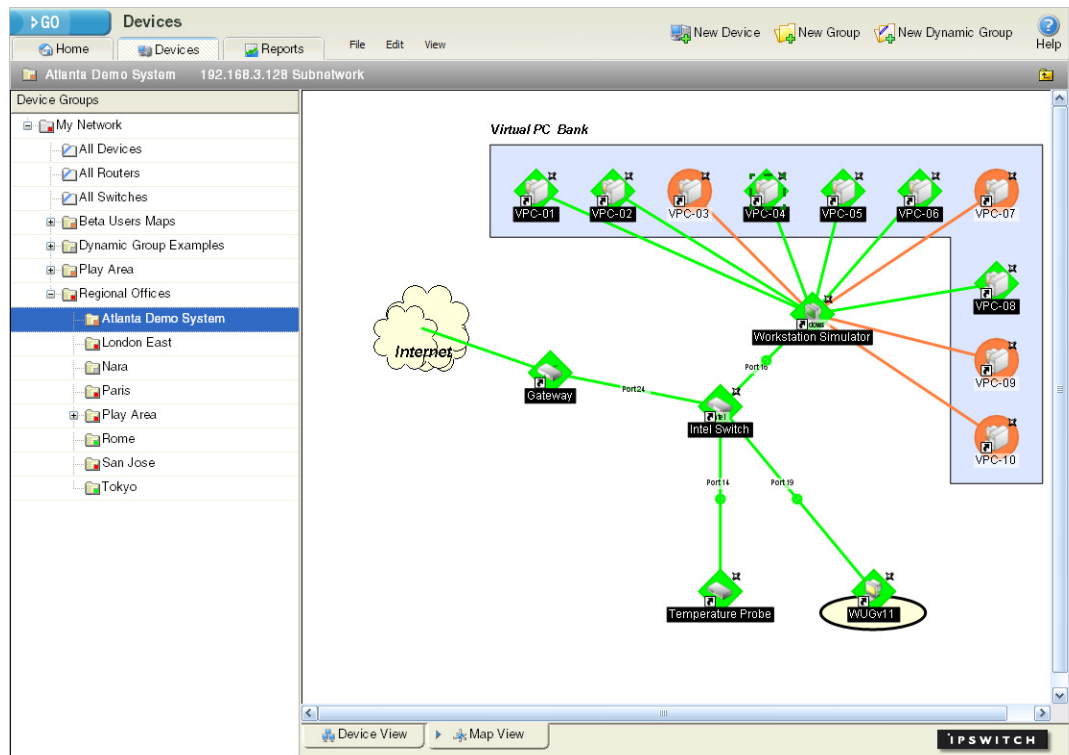
In the web interface, the Device Status page opens. Click Device Properties. The Device Properties dialog opens.



- 3 Click **Polling**. The Polling, Maintenance, and Dependencies dialog opens.
- 4 Click either the **Up Dependency...** or the **Down Dependency...** button to bring up the Device Dependencies dialog and configure the up or down dependency. For information about using the Device Dependencies dialog, see the *Using the Device Dependencies dialog* topic below.

Setting dependencies in the Map View

- 1 In the console, double-click a device in My Network view (**View > Map View**). The Map View opens.
(Temp Graphic: Console graphic to replace Web interface graphic below)



- 2 Right-click a device, select **Set Dependencies**, then select either **Set Up Dependency on** or **Set Down Dependency on**. The cursor changes to the Set Dependency arrow.



- 3 Click on any device in the current group to set the dependency. For information about using the Device Dependencies dialog, see the *Using the Device Dependencies dialog* topic below.

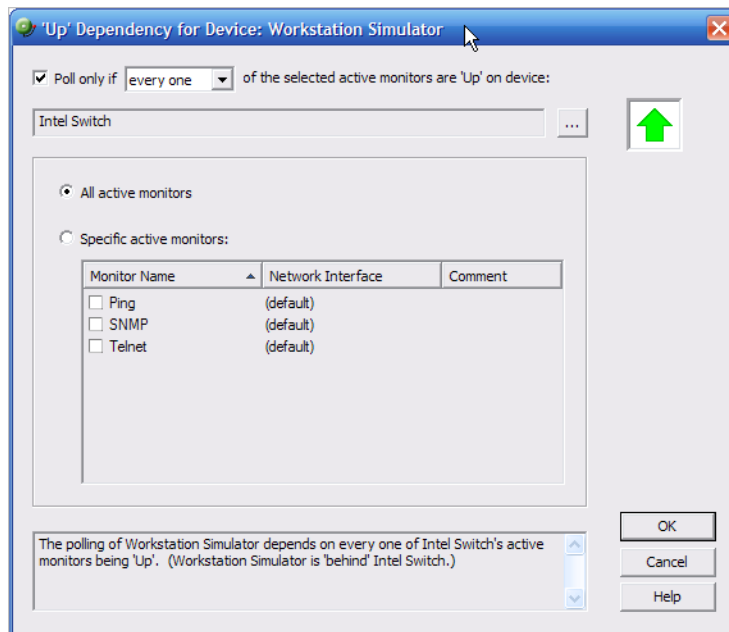


Note: You cannot set a dependency across groups. However, you can make shortcuts to the devices you want to set a dependency on in a group, then set the dependency to the shortcut.

To view the dependency between the two devices, click **Display > Polling Dependency Arrows** In the Map View,

Using the Device Dependencies dialog

The Device Dependencies dialog is the same for both up and down dependencies with the exception that one sets up dependencies and the other sets down dependencies. Up dependencies are indicated with an upward green arrow icon, while down dependencies are indicated with a downward red arrow.



- Click to select the **Poll only if** check box to either poll only if **Any one** or **Every one** of the active monitors selected below are up or down on device, depending on the type of dependency you want to set.
- Click the **Browse (...)** button to select a device for the dependency.
- Select either **All active monitors** or **Specific active monitors** and check the active monitors you want to associate with the dependency.

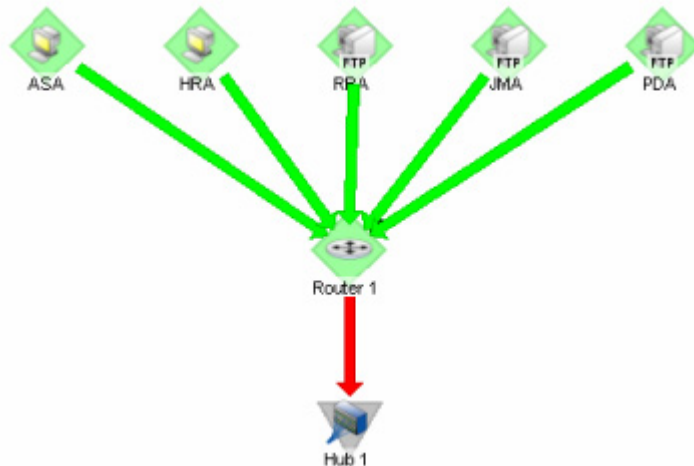
The statement at the bottom of the dialog is generated to help you understand the type of dependency you have created.

An example statement would read:

The polling of Workstation Simulator depends on every one of Intel Switch's active monitors being 'Up'. (Workstation Simulator is 'behind' Intel Switch.)

Viewing Dependencies

After you have set up your dependencies, you can view dependency lines in the Map view, as long as the devices appear in the same group. If the devices are not in the same group, you can refer to the Polling section of Device Properties to view the dependencies.



In the example above, the devices have an up dependency on the router, and the router has a down dependency on the hub. If the router's active monitors fail, the hub would be polled, and the devices behind the router would not be polled. When the router's active monitors are successful, the hub is not polled, but the devices behind the router are.

About Ipswitch

Founded in 1991, Ipswitch, Inc., develops easy-to-use, affordable, software products that extend mission-critical IT resources for businesses and improve efficiency for consumers. Its product family includes WS_FTP Professional, the world's most popular FTP client; WS_FTP Server with 128-bit SSL encryption, the first industrial-strength, full-featured FTP server for Windows NT/2000/XP; WhatsUp Gold, a leading network mapping, monitoring, notification and reporting tool; IMail Anti-Virus, an add-on product powered by Symantec's CarrierScan™; and Ipswitch Instant Messaging, a secure Instant Messaging solution specifically designed for businesses.