



IPSWITCH WS_FTP

Professional 2007

Tools Guide

IPSWITCH

Ipswitch Inc. **Web: <http://www.ipswitch.com>**
10 Maguire Rd **Phone: 781.676.5700**
Suite 220
Lexington, MA 02421 **Fax: 781.676.5710**

Copyrights

Copyright © 2006 by Ipswitch, Inc. All rights reserved. WS_FTP, the WS_FTP logos, Ipswitch, and the Ipswitch logo are trademarks of Ipswitch, Inc. Other products or company names are or may be trademarks or registered trademarks and are the property of their respective companies.

The information in this document is subject to change without notice and should not be construed as a commitment by Ipswitch, Inc. While every effort has been made to assure the accuracy of the information contained herein, Ipswitch, Inc. assumes no responsibility for errors or omissions.

Ipswitch, Inc. assumes no liability for damages resulting from the use of the information contained in this document.

The software described in this document is furnished under a license and may be used or copied only in accordance with the terms of that license.

No part of this publication may be reproduced, photocopied, stored on a retrieval system, or transferred without the expressed prior written consent of Ipswitch, Inc.

Ipswitch WS_FTP Professional includes software developed by the OpenSSL Project.

PGP is a registered trademark of PGP Corporation.

Ipswitch WS_FTP Professional contains software based on the standards defined by the OpenPGP Working Group of the Internet Engineering Task Force (IETF) Proposal Standard RFC 2440.

Version History

Version 9.0	Released June 2004
Version 2006	Released June 2005
Version 2007	Released June 2006

Contents

Chapter 1	Introduction	
	Ways to Automate Regular File Transfers	1
	Check Transfer Status and Logs	2
	Building a List of Files for Transfer	2
	Transfer Files as a Compressed Archive	3
	Transfer and Append to a Remote File	3
	How to Speed Up Transfer of Large Files	3
	Integrating Ipswitch WS_FTP Professional with a Browser or E-Mail	4
	Search an FTP Site for a File or Folder	5
	Using the Upload Wizard	5
Chapter 2	Using the Information Window	
	The Transfer Manager	7
	How to Use the Batch Mode	8
	How to Pause a Transfer	8
	How to Remove an Item	8
	Request Properties	9
	Transfer History	9
	Executing a file	10
	Clearing the History	10
	How to Schedule a Transfer	10
	Operation After Transfers	11
	Connection Log	11
Chapter 3	Scheduler Utility	
	Using the Scheduler	13
	Examples	14
	Adding a Script to the Scheduler	14
	Updating a Web Site on a Nightly Basis	15

Chapter 4	Backing Up Files	
	Using the Backup Job Wizard	17
	Examples.....	18
	Adding a Backup Job with the Backup Job Wizard	18
	Changing a Backup Job with Manage Backup Jobs Dialog	21
Chapter 5	Synchronizing Files and Folders	
	Using the Synchronize Wizard	23
	Using the Synchronize Utility.....	25
	Synchronize Dialog.....	25
	Example	27
	Using a Control File.....	28
	Exclusions and Inclusions.....	29
	Exclusion Examples.....	29
	Inclusion Examples.....	31
	Executing Control Files Using HotSync.....	33
	Using the Synchronize Utility from the Command Line.....	33
Chapter 6	Script Utility	
	Starting the Script Utility.....	36
	Writing and Debugging Scripts	36
	Executing Scripts	36
	Executing a Script from the Command Prompt.....	36
	Running a Script from the Script Utility.....	37
	Example	37
Chapter 7	Search Utilities (local and remote)	
	Using Local Search.....	40
	Using the Local Search Results	43
	Using Remote Search.....	44
	Using the Remote Search Results	45
	Examples.....	46
	Finding a File When You Are Not Sure of Its Name	46
	Finding a File Modified During a Specific Time Period	47
	Finding a File in a Particular Folder	47
	Finding a File Smaller Than a Certain Size	48

Chapter 8 Using the Command Line

Basic Command Line Syntax	49
Site Information	50
Transfer Source	50
Transfer Destination.....	51
File Transfer Options	51
Uploading Files	51
Downloading Files	51
Renaming Files	52
Adding Current Date and Time Information to File Names	52
Compressing Files.....	52
Transferring multiple files from the same location.....	52
Converting File Names to Lower Case	52
File Transfer Modes	53
Transferring Files and Folders with Spaces in the Name	53
Enclosing the Command Line in Quotes	53
Using the Short Name	53
Using a Batch File.....	53
Multiple Folders or Commands	54
Pre-scheduled Transfers (“Automated Transfers”).....	55
Extras	56
Summary of Arguments.....	57
Return Codes.....	58

Chapter 9 Textual Error Messages

“Blocking call canceled”	59
“Connection refused” or “Connection closed by remote”	60
“Disk quota exceeded”	60
“File too large to download”	60
“Logon failure; Quitting.”	60
“MDTM”	61
“User access denied”	61

Introduction

This guide introduces tools that can help you automate regular file transfer tasks, troubleshoot problems, verify transfers, and customize the way you work with Ipswitch WS_FTP Professional.

This chapter shows some of the situations where the tools can help you. The following chapters present more detailed information about the tools.

Ways to Automate Regular File Transfers

If you do regular file transfers, such as updating a web site nightly, or sending an accounting report to the home office weekly, you may find it easier to automate the transfer. Several Ipswitch WS_FTP Professional tools let you automate transfers:

If you want to:	Use this tool:
Have a regular transfer, such as a file upload, occur at a specified time interval, such as every Thursday at 5:00 pm.	Scheduler Utility. See “Scheduler Utility” on page 13.
Mirror a set of files on your PC with a set of files on an FTP server.	Synchronize Utility. See “Synchronizing Files and Folders” on page 23.
Automate a regular process that includes not only a file transfer, but actions such as changing directories, deleting files, or checking for the success or failure of a command.	Script Utility. See “Script Utility” on page 35.

You can open any of these tools from the **Tools** menu.

Chapter 1

In this Chapter

Ways to Automate Regular File Transfers

Check Transfer Status and Logs

Build a List of Files for Transfer

Transfer Files as a Compressed Archive

Transfer and Append to a Remote File

How to Speed Up Transfer of Large Files

Integrating Ipswitch WS_FTP Professional with a Browser or E-Mail

Search an FTP Site for a File or Folder

Using the Upload Wizard

Check Transfer Status and Logs

Use the **Information Window** at the bottom of the Ipswitch WS_FTP Professional main window to verify transfers, pause or cancel a transfer, and troubleshoot both transfer and connection problems.

You can interact with “transfer jobs” shown in the Transfer Manager and Transfer History. For example, you can use Batch Mode with the Transfer Manager to build a list of files for transfer.

The Connection Log shows the commands sent back and forth (the “conversation”) between Ipswitch WS_FTP Professional and the FTP server.

For more information, see “Using the Information Window” on page 7.

Building a List of Files for Transfer

When transferring multiple files, you may find it easier to first build a list of files for transfer, then process the transfer. When **Batch Mode** is active, you can browse folders and add files to the batch list. You can review the list, make any changes, and then upload or download the entire list.

To use Batch Mode:

- 1 In the toolbar, click **Connect** to open the Site Manager.
- 2 Select a site and click **Connect**.
- 3 Select **Tools > Batch Mode**. At the bottom of the remote site’s file list, you’ll see the Batch Mode icon.
- 4 Select a file or files and click the transfer arrow. The file will be placed in the Transfer Manager.

Within the Transfer Manager, you can select a file to remove it from the list, view the transfer properties, transfer or schedule for later transfer. For more information, see “Using the Information Window” on page 7.

- 5 After you have added all of the files to the batch, select **Tools > Batch Mode** again to take Ipswitch WS_FTP Professional out of batch mode.
- 6 In the Transfer Manager, select the requests you want to execute. Hold down the Ctrl key to select multiple requests.
- 7 After you take the client out of batch mode, it will execute the transfers.

Transfer Files as a Compressed Archive

When you select files or folders and upload them while **Compression Mode** is enabled, the files are transferred as a single ZIP archive. Compression Mode can only be used when transferring files from your local computer to a remote server.

To use Compression Mode:

- 1 In the toolbar, click **Connect** to open the Site Manager.
- 2 Select a site and click **Connect**.
- 3 From the Tools menu, select **Compression Mode**. At the bottom of the remote site's file list, you should see the Compression Mode icon.
- 4 Select the files or folders to transfer.
- 5 Click the **Upload arrow**.

Transfer and Append to a Remote File

When Ipswitch WS_FTP Professional is in **Append Mode**, you transfer a source file and append it to a destination file. You can append files in either direction, upload or download. Append Mode saves you the extra step of concatenating two files after transfer.

To use Append Mode:

- 1 In the toolbar, click **Connect** to open the Site Manager.
- 2 Select a site and click **Connect**.
- 3 From the Tools menu, select **Append Mode**. At the bottom of the remote site's file list, you should see the Append Mode icon.
- 4 Select the file or files to transfer. You are prompted for the destination file name.
- 5 Enter the file name of the destination file (the file to which the transferred files are appended).

The selected files are transferred and appended to the destination file. If you open the destination file, you will see the appended files.

How to Speed Up Transfer of Large Files

Large files, such as an architect's blueprint or a software executable, can take longer to transfer. If you regularly transfer large files, you can use **Multipart mode** to speed up the transfer.

When in Multipart Mode, Ipswitch WS_FTP Professional splits large files into smaller segments, and downloads all segments via different, yet concurrent, connections. This decreases the total download time for large individual files.

NOTE: Multipart works with download files only. It does not work with SSL connections.

To use Multipart Mode:

- 1 In the toolbar, click **Connect** to open the Site Manager.
- 2 Select a site and click **Edit**.
- 3 Select the Transfer options and make sure that **Maximum transfer connections** is set to more than one.

The number of connections made is determined by the number of additional connections specified here and the number of connections allowed by the server.

- 4 Click **OK** to close the Site Options, and then click **Connect**.
- 5 Select **Tools > Multipart Mode**. At the bottom of the FTP site's file list, you'll see the Multipart Mode icon.

When you transfer files to this site, Ipswitch WS_FTP Professional will use multiple data connections.

The Transfer Manager displays the file, the number of segments that the file has been divided into, and the status of the transfer of each of the segments. When each of the segments are complete, the Transfer Manager shows the status of re-combining the segments into one file, if that process takes longer than 2 seconds.

If there are no segments listed under the file being downloaded, then the file is not large enough to be divided.

- 6 To turn off MultiPart Mode, select **Tools > Multipart Mode** again.

Integrating Ipswitch WS_FTP Professional with a Browser or E-Mail

FTP sites have an Internet address, similar to a web address, that looks like:

```
ftp://ftp.ipswitch.com
```

You can set an option in Ipswitch WS_FTP Professional so that when you click on an FTP address in your browser or e-mail client, Ipswitch WS_FTP Professional will open and connect to the FTP server.

The type of FTP address affects how this works:

If the address includes:	Ipswitch WS_FTP Professional does:
the name of an FTP server Ex. ftp.ipswitch.com	Opens and connects to the server
the path and name of a file Ex: ftp.ipswitch.com/French/ftp803.txt	Downloads the file to your PC and prompts whether to save or open the file.
the path and name of a folder Ex: ftp.ipswitch.com/French	Opens, connects to the server, and navigates to the folder.

To turn on Browser Integration:

- 1 In the toolbar, click **Options**.
- 2 From the Program Options dialog, select **Browser Integration**.
- 3 If you use Netscape Navigator and want Ipswitch WS_FTP Professional to handle FTP URLs, select the first check box.
- 4 If you use Microsoft Internet Explorer and want Ipswitch WS_FTP Professional to handle FTP URLs, select the second check box.
- 5 If you want to be prompted each time you click an FTP URL so you can choose whether or not to use Ipswitch WS_FTP Professional, select **Ask before using WS_FTP**.

Search an FTP Site for a File or Folder

If you are searching a large, complex site for a file, you can use the Find Utility to quickly locate the file and then initiate a transfer. For more information, see “Search Utilities (local and remote)” on page 39.

Using the Upload Wizard

The Upload Wizard is a utility that allows you to transfer files from your local system to a remote site without using the Ipswitch WS_FTP Professional interface. There are two ways to access the Upload Wizard:

- In Windows Explorer, select the files or folders you want to upload, then right-click on the list. In that list you will see 'Upload using WS_FTP Upload Wizard.' After selecting that option, the Upload Wizard appears with the files already added to the upload list.
- From the Start menu, select **Programs > Ipswitch WS_FTP Professional > Utilities > WS_FTP Upload Wizard**. The Wizard opens and is ready for you to add the files you want to upload.

Using the Information Window

Chapter 2

Use the **Information Window** at the bottom of the Ipswitch WS_FTP Professional main window to verify transfers, pause or cancel a transfer, and troubleshoot both transfer and connection problems.

You can interact with transfer jobs shown in the Transfer Manager and Transfer History. For example, you can use Batch Mode with the Transfer Manager to build a list of files for transfer.

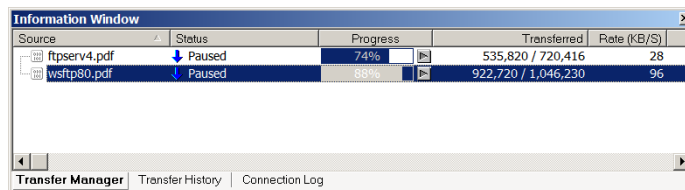
The Connection Log shows the commands sent back and forth (the “conversation”) between Ipswitch WS_FTP Professional and the remote server.

By default, the Information Window is viewable, but you toggle it on or off using the View menu.

The Transfer Manager

The Transfer Manager is the module of Ipswitch WS_FTP Professional that performs transfers. It can also be used to view the progress of transfers, schedule the transfer of multiple files, and view logs for individual transfers.

The Transfer Manager displays a list of all pending, paused, and failed transfers.



Source	Status	Progress	Transferred	Rate (KB/S)
ftpserv4.pdf	Paused	74%	535,820 / 720,416	28
wsftp80.pdf	Paused	88%	922,720 / 1,046,230	96

- **Source.** The path and name of the file or folder that is to be transferred.
- **Status.** The current status of the listed item. The icon shows the type of event.

In this Chapter

The Transfer Manager

Transfer History

Connection Log

- **Progress.** How complete the event indicated in Status is. Click the button next to Progress to either start or pause the transfer.
- **Transferred.** The number of bytes transferred.
- **Rate (KB/S).** The number of kilobytes being transferred per second.
- **Time Left.** The estimated time left until the transfer is complete.

How to Use the Batch Mode

You can use Batch Mode to add requests to the Transfer Manager.

- 1 Connect to a server.
- 2 Select **Tools > Batch Mode** or click **Batch Mode** in the toolbar.
- 3 Select a file or files and click the transfer arrow. The file will be placed in the Transfer Manager.
- 4 After you have added all of the files to the batch, select **Tools > Batch Mode** again to take Ipswitch WS_FTP Professional out of batch mode.
- 5 In the Transfer Manager, select the requests you want to execute. Hold down the Ctrl key to select multiple requests.
- 6 After you take the client out of batch mode, it will execute the transfers.

How to Pause a Transfer

To pause an active transfer from the Transfer Manager, select the entry, then right-click and select **Pause** from the menu.

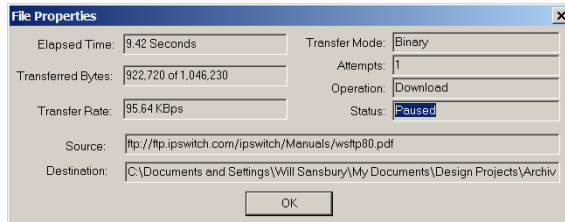
You can also click the Pause button next to the progress column.

How to Remove an Item

To remove an item from the Transfer Manager, select the transfer item, then right-click and select **Delete** from the menu.

Request Properties

You can double-click any item on the Transfer Manager to view the Properties dialog for that item.



The following information appears on the **File Properties dialog**.

- **Elapsed Time.** The amount of time that has passed since the transfer began.
- **Contains.** Number of files and folders contained in the request. (Only displayed when a folder is selected.)
- **Transferred Bytes.** The number of bytes transferred.
- **Transfer Rate.** The number of Kilobytes being transferred per second.
- **Transfer Mode.** Whether the file was transferred in binary or ASCII mode. (Not displayed when a folder is selected.)
- **Attempts.** Number of times the application tried to make the transfer.
- **Operation.** The type of transfer being performed. Either Upload or Download.
- **Status.** The current status code of the listed item.
- **Source.** The path name of the source of the transfer.
- **Destination.** The path name of the destination of the transfer.

Transfer History

The Transfer History tab displays a list of successful transfers. This list can be sorted by clicking on the column headers.

Date	Source	Source Path	Source File Name	Destin..	Destination Pa..	Destination File Name	Size
4/18/2005 12:27:18 AM	ftp://doc...	/WS_FTP/H...	wstfpH10Alpha...		C:\Documents...	wstfpH10Alpha1_1.exe	9,664,851
4/26/2005 10:33:06 AM	ftp://doc...	/WS_FTP S...	ifs6setupUAB2...		C:\Documents...	ifs6setupUAB2.exe	56,126,469
4/26/2005 3:57:03 PM	ftp://doc...	/WS_FTP S...	ifs6setupUAB4...		C:\Documents...	ifs6setupUAB4.exe	56,165,622
4/26/2005 3:59:14 PM	Alpha	/WS_FTP/P...	wstfpProRC1.e...		C:\Documents...	wstfpProRC1.exe	10,321,286
5/5/2005 1:06:46 PM	Alpha	/WS_FTP/P...	demo32.exe		C:\Documents...	demo32.exe	503,808
5/9/2005 11:30:08 AM	ftp://eno...	/ipswitch/M...	whatsupg.pdf		C:\Documents...	whatsupg.pdf	2,607,864

- **Transfer Arrow.** The arrow on the far left side of the item identifies what type of transfer was performed. An up arrow means upload, a down for download, and a left-right arrow is for site-to-site transfers.
- **Date.** This is the date and time the transfer was completed.
- **Source.** This is the site profile that was used to connect to the source.
- **Source Path.** The path on the source directory from the root to the transferred item.
- **Source File Name.** The name of the source file that was transferred.
- **Destination.** The site profile and folder that was used to connect to the destination.
- **Destination Path.** The path on the destination directory from the root to where the transferred item was placed.
- **Destination File Name.** The name of the file after it has been transferred.
- **Size.** The number of bytes transferred.

Executing a file

After a file is successfully transferred, you can select it and choose **Execute** from the right-click menu. If it is a download, the destination file will be opened in its associated application. If it is an upload, the source file will be opened.

Clearing the History

You can remove items from the history list by selecting them and choosing **Delete** from the right-click menu.

You can remove all items by selecting **Clear All** from the right-click menu.

How to Schedule a Transfer

To schedule a transfer from the Transfer Manager or Transfer History tabs:

- 1 Select a request, file, or folder.
- 2 From the right-click menu, select **Schedule**.
- 3 In the **Schedule Item Properties** dialog, enter the date, time, and frequency of the transfer.
- 4 Click **OK** to add the item to **Scheduler**.

Operation After Transfers

The **Operations After Transfers** submenu can be found on the **Tools** menu. This submenu allows you to select the following operations:

- **Exit Application.** After the application finishes all active or scheduled transfer requests, Ipswitch WS_FTP Professional will close itself.
- **Shutdown Computer.** After the application finishes all active or scheduled transfer requests, Ipswitch WS_FTP Professional will attempt to shut the computer down.

Connection Log

The Connection log shows all commands sent from Ipswitch WS_FTP Professional to the server and shows the replies from the server. This log can help you troubleshoot a connection error.

The log window will contain all actions that have been initiated for the selected transfer request, including pause and resume.

For descriptions of error messages that may appear in the log, see “Textual Error Messages” on page 59.

Scheduler Utility

Chapter 3

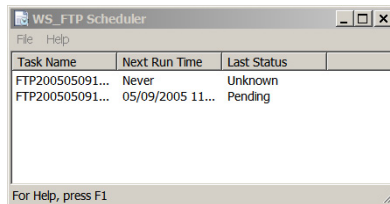
The WS_FTP Pro Scheduler Utility lets you create FTP tasks or “jobs” for transfers that you need to perform repeatedly or manually at a particular time. Each task can consist of any number of uploads and downloads of files and folders.

This chapter provides an overview of the Scheduler and some examples of how you might use it. For detailed instructions on using the Scheduler, start the Scheduler and use its online Help.

Using the Scheduler

To access the Scheduler window, do one of the following:

- In the **Tools** menu, select **Scheduler Utility**.
- From the **Start** menu, select **Programs > Ipswitch WS_FTP Professional > Utilities > WS_FTP Scheduler**.



Once you are in the Scheduler window, you are ready to set up a file transfer task. You can:

- Add a pre-existing script to run at a particular time. (For more information on creating scripts, see “Chapter 6: Script Utility” on page 35.)
- Drag and drop a file from the Ipswitch WS_FTP Professional interface to the Scheduler window to create an upload task.
- Create a new transfer/custom task.
- Modify or delete tasks.
- The WS_FTP Scheduler will run the task at the time you schedule it to run, or you can make the task run on demand by using the **Run Now** option.

In this Chapter

Using the Scheduler

Examples

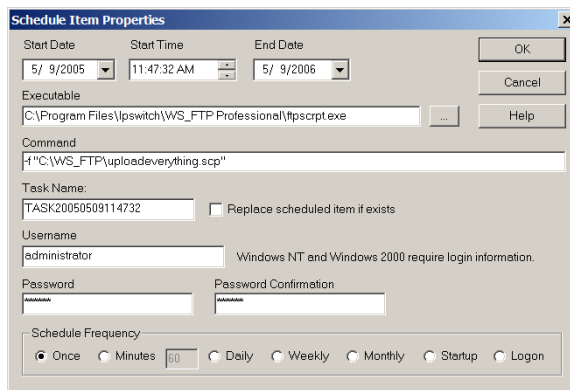
Examples

The following are examples of how you might use the WS_FTP Scheduler.

Adding a Script to the Scheduler

To add a script to the scheduler:

- 1 From the WS_FTP Scheduler dialog, click **File > New > Custom**. The **Schedule Item Properties** dialog appears.
- 2 In the **Start Date** and **End Date** boxes, set the dates for when you want this recurring task to begin and when you want it to end.



- 3 In the **Start Time** box, enter the time of day you want the task to run.
- 4 In the **Executable** box, enter the full path to the *ftpscript.exe* application.
- 5 In the **Command** box, enter *-f* followed by the full path to the script you want WS_FTP Scheduler to run. If the path contains spaces, put quotation marks around the path.
- 6 If you are on a Windows 2000 or Windows XP, you must enter your user login and password in the boxes provided.

NOTE: If you are on a domain, include the domain name in the Username box. Example: IPSWITCH_D\userid

- 7 Select the frequency of the recurring transfer in the **Schedule Frequency** area.
- 8 Click **OK** to add this task to the scheduler.

Updating a Web Site on a Nightly Basis

If you have a Web site you would like to update every night, without having to manually upload all of the files you have recently changed, you can set up a scheduled task to have it run as frequently as you like.

To schedule items:

- 1** In Ipswitch WS_FTP Professional, select the file you want transfer from the local or a remote site, then click **File > Send to Scheduler**.

You can select multiple files or folders by holding the Ctrl key and clicking the file or folder name. The **Schedule Item Properties** dialog appears.
- 2** In the **Start Date** and **End Date** boxes, set the dates for when you want this recurring task to begin and end.
- 3** In the **Start Time** box, enter the time of day you want the task run.
- 4** The **Executable**, **Command**, and **Task Name** boxes are filled in for you. A .tmp file name is automatically entered in the **Command** box. This file identifies the files to download and the locations to transfer them to and from.
- 5** If you are using Microsoft Windows 2000 or Microsoft Windows XP workstation, enter your **Username** and **Password** in the boxes provided.
- 6** In the **Schedule Frequency**, select the recurring transfer frequency.
- 7** Click **OK** to add this task to the scheduler.

Backing Up Files

Chapter 4

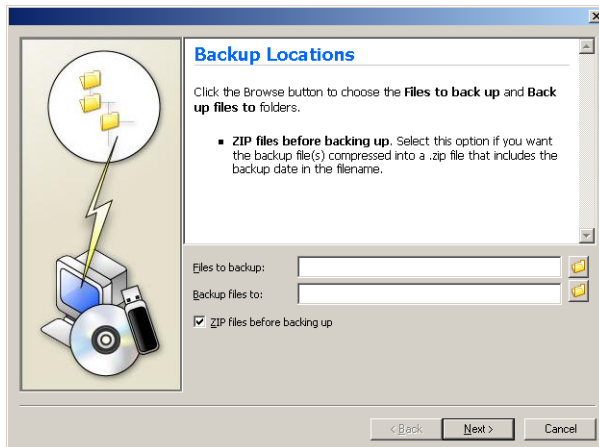
The WS_FTP Professional Backup Wizard lets you select files or folders that you want to back up, schedule a backup time, or run the backup immediately. Unlike the Synchronize utility, rather than comparing and transferring files in multiple directions (for example, synchronizing files between a local and remote site), Backup transfers selected files or folders from one location to another (in one direction).

This chapter provides an overview of the Backup Wizard, Managing Backup Jobs, and some examples of how you might use the Backup features.

Using the Backup Job Wizard

To start the Backup Job Wizard:

- Click **Tools > Backup Files > Add a new backup job...**
- Complete the Backup Wizard settings to create a new Backup Job.



- After the settings are complete, the Manage Backup Jobs dialog opens. The new Backup Job displays in the list. The job

In this Chapter

Using the Backup Job Wizard

Managing Backup Jobs

Examples

will run at the next scheduled time, or you can click **Run Now** to run the job immediately.

To manage backup jobs:

- 1 Click **Tools > Backup Files > Manage backup jobs...** The Manage Backup Jobs dialog opens.
- 2 Click to highlight a Backup Job that you want to **Change, Remove, or Run:**
 - **Change.** Click to edit the selected Backup Job.
 - **Remove.** Click to remove the selected Backup Job.
 - **Run Now.** Click to run the selected Backup Job immediately, without waiting for the scheduled time.
- 3 To add a new Backup Job, click **Add** and complete the new Backup Job settings.

Examples

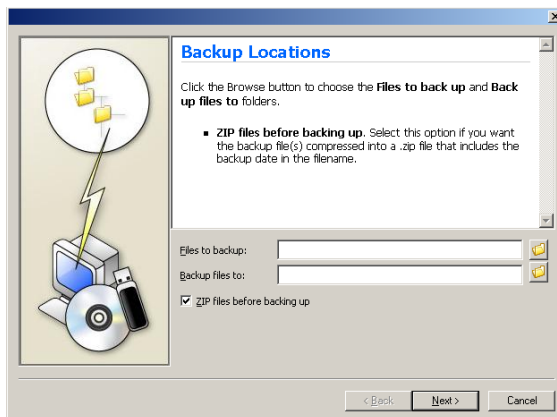
The following are examples of how you might use the Backup Job Wizard and Manage Backup Jobs.

Adding a Backup Job with the Backup Job Wizard

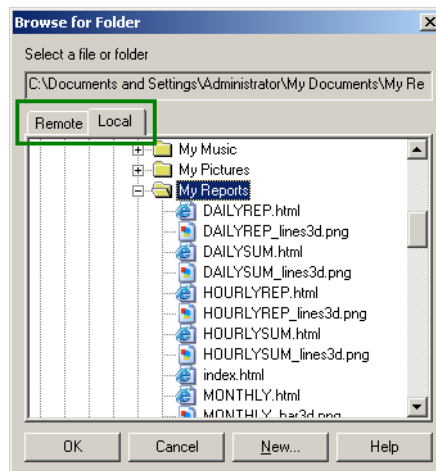
If you need to save critical report files that you receive each day and currently store on your local drive. You can back up the files to another drive (for example, a mapped network drive) at a selected time each day.

To add a backup job to the scheduler:

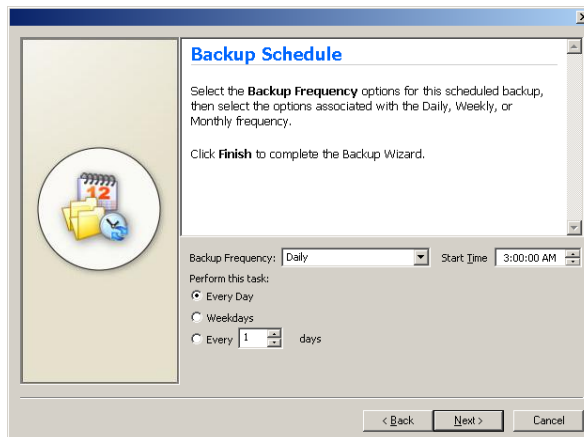
- 1 Click **Tools > Backup Files > Add a new backup job...** The Backup Wizard opens.



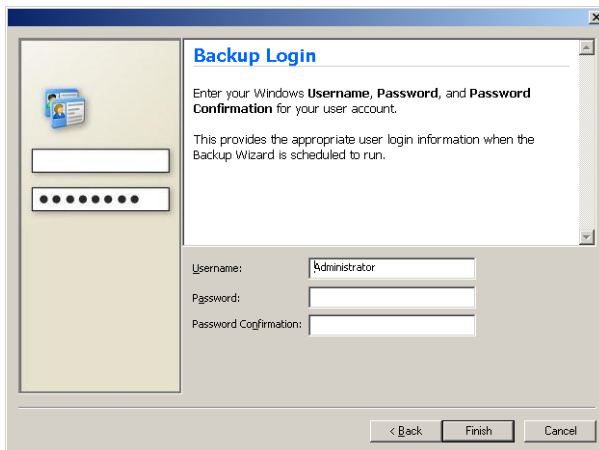
- 2 Browse to select the **Files to backup...** location. When the Browse for Folder dialog opens, make sure that you select the appropriate tab (**Local** or **Remote**) for the files you want to back up. Click **OK**.



- 3 Browse to select the **Backup files to...** location. Again, when the Browse for Folder dialog opens, make sure that you select the appropriate tab (**Local** or **Remote**) for the files you want to back up, then click **OK**.
- 4 If you want to have the backup files compressed to a .zip file, click **ZIP file before backing up**.
- 5 Click **Next**. The Backup Schedule wizard page displays.



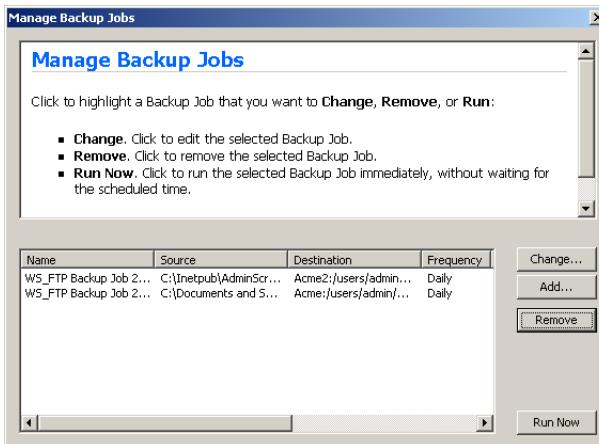
- 6 Select the **Backup Frequency**, **Start Time**, **Perform this task** options to schedule the backup, then click **Next**. The Backup Login wizard page displays.



- 7 Enter your Windows **Username**, **Password**, and **Password Confirmation** for your user account.

IMPORTANT: Make sure that you enter your **Username**, **Password**, and **Password Confirmation**. This provides the appropriate login information when the Backup Wizard starts to run a scheduled backup.

- 8 Click **Next**. The Manage Backup Jobs dialog opens and the new Backup Job displays in the list. The job will run at the next scheduled time, or you can click **Run Now** to run the task immediately.

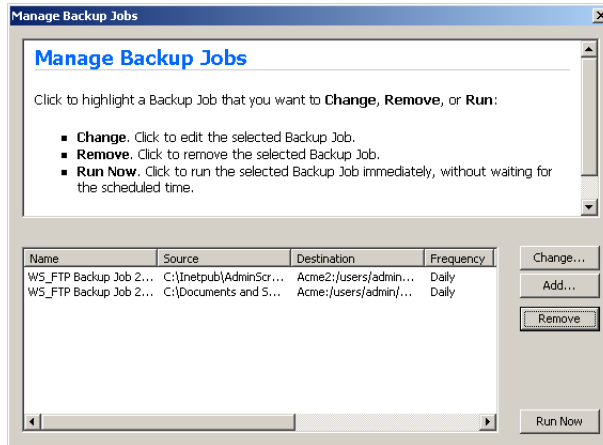


Changing a Backup Job with Manage Backup Jobs Dialog

If you need to change settings for a currently scheduled backup job or add a new backup job, you can use Manage Backup Jobs options.

To change, add, remove, or run a backup job:

- 1 Click **Tools > Backup Files > Manage backup jobs...** The Manage Backup Jobs dialog opens.



- 2 Click to highlight a Backup Job that you want to **Change, Remove, or Run**:
 - **Change.** Click to edit the selected Backup Job.
 - **Remove.** Click to remove the selected Backup Job.
 - **Run Now.** Click to run the selected Backup Job immediately, without waiting for the scheduled time.
- 3 To add a new Backup Job, click **Add** and complete the new Backup Job settings.

Synchronizing Files and Folders

Chapter 5

The WS_FTP Synchronize Utility lets you synchronize (or “mirror”) files and file directories between local files, remote sites, network drives, and USB drives with minimal intervention.

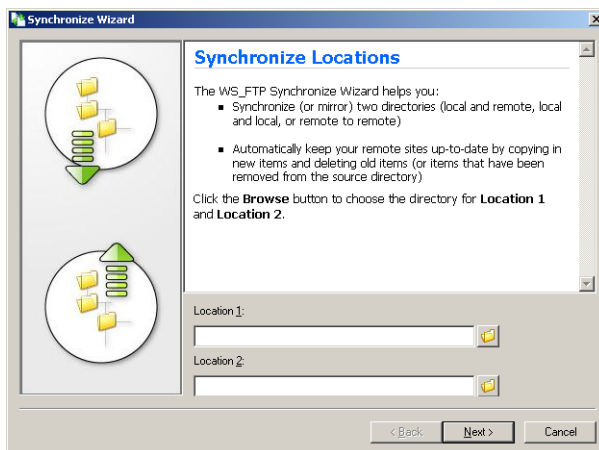
It lets you keep remote sites up-to-date by automatically uploading files which have changed while deleting files that have been removed from the master directory. This is especially useful for quickly and efficiently updating Web sites.

This chapter provides an overview of the Synchronize Wizard, the Synchronize Utility and some examples of how you might use it. For detailed instructions on using the Synchronize Utility, start the Synchronize Utility and use the online Help.

Using the Synchronize Wizard

To start the Synchronize Wizard:

- 1 Click **Tools > Synchronize Files > Add a new synchronize task...** The Synchronize Wizard opens.



In this Chapter

Using the Synchronize Wizard

Using the Synchronize Utility

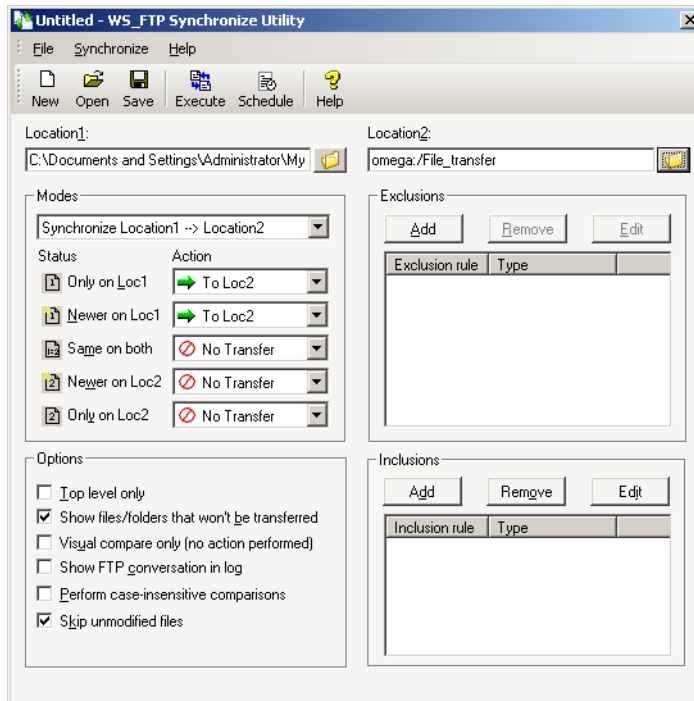
Synchronize Dialog

Using a Control File

Exclusions and Inclusions

Using the Synchronize Utility from the Command Line

- Complete the Synchronize Wizard settings to create a new Synchronize project (control file). After you have completed the Synchronize Wizard, the synchronize settings display in the Synchronize Utility dialog.



- Click:
 - Execute** to run the sync job immediately.
 - Schedule** to open the Schedule utility and set times to run the sync job.
 - Save** to save the sync job control file (.ctl) to store configuration options and settings for your synchronize jobs. This saves you from setting up a job each time you want to run it.

Using the Synchronize Utility


To start the Synchronize Utility:

- From the **Tools** menu, click **Synchronize Files > Manage synchronize tasks...** The Synchronize Utility opens.
- OR -
- From the **Start** menu, select **Programs > Ipswitch WS_FTP Professional > Utilities > Synchronize Utility**.

Synchronize Dialog

After the Synchronize Utility dialog opens. When using this dialog, you are creating a control file that will be used to perform the synchronization of the locations that you identify.

The following are the features found on this dialog:

- **Locations.** The locations section is where you identify the directories that you want to synchronize. Click the Browse button  to choose the directory for Location 1 and Location 2. Location 1 and Location 2 can be a local or remote site.
- **Modes.** Select the mode you want Sync to operate in.
 - **Synchronize Location 1 --> Location 2.** This mode updates Location 2 so that it matches the directory structure of Location 1.
 - **Synchronize Location 1 <-- Location 2.** This mode updates Location 1 so that it matches the directory structure of Location 2.
 - **Synchronize both Location 1 <--> Location 2.** This mode makes each location match the other by copying the newest versions of Location 1 files to Location 2 and by copying the newest versions of Location 2 files to Location 1.
 - **Customized mode.** Lets you set the actions you want the utility to perform when files are found with a specific status.
 - **Status and Actions.** This section is to be used when you have chosen the Customized mode. The Status is the current state of the comparison, and the Action is what WS_FTP Pro Synchronize will do when it finds an item with that status.
 - **Only on Loc1.** The file is only found in Location 1.
 - **Newer on Loc1.** The file found in Location 1 is newer than the file found in Location 2.
 - **Same on both.** The file found is the same in both locations.

- **Newer on Loc2.** The file found in Location 2 is newer than the file found in Location 1.
- **Only on Loc2.** The file is only found in Location 2.
- **Options.** Select the options you want Sync to use.
 - **Top level only.** Select this option to have the locations synchronized on the top level only. All subdirectories will be ignored.
 - **Show files/folders that won't be transferred.** Select this option to have Sync display files with the **No Action** action code in the Compare dialog.
 - **Visual compare only (no transfer).** Select this option to have Sync populate the Compare dialog without executing the synchronize job. Once you are on the Compare dialog, you can make changes to what tasks the job will perform.
 - **Show FTP conversation in log.** Select this option to show the FTP conversation in the generated log file, as well as the log pane on the Compare dialog.
 - **Perform case-insensitive comparisons.** Select this option to have Synchronize ignore differences in upper and lower case filenames.
 - **Skip unmodified files.** Select this option to have Synchronize compare files between the sites. The content is compared using the user selected File Integrity algorithm settings, click **Help** for more information. If the files are the same, no transfer occurs. If the files are not the same, they are updated to the target site(s).

NOTE: This option compares files before transferring them and therefore may reduce the transfer speed.

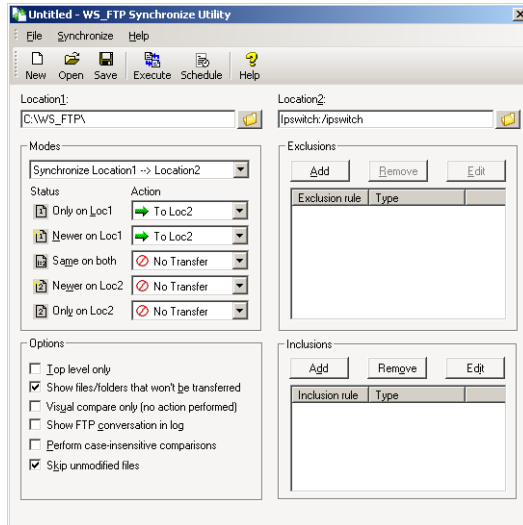
NOTE: If ASCII Transfer Mode, OpenPGP, Compression Mode, or Append Mode transfer options are used, then the Skip unmodified files option is ignored.

- **Exclusions.** See “Exclusion Examples” on page 29 for more information.
- **Inclusions.** See “Inclusion Examples” on page 31 for more information.
- **Buttons.** The buttons control the various functions of the utility.
 - **Open.** Click this button to open a control file.
 - **Save.** Click this button to save your current settings as a control file.
 - **Schedule.** Click this button to schedule the sync job through WS_FTP Scheduler.
 - **Execute.** Click this button to execute the sync job. If the Visual compare only (no transfer) option is selected, the Compare dialog will show what is going to happen, but no transfers will be made.

- **Exit.** Click this button to close the application.

Example

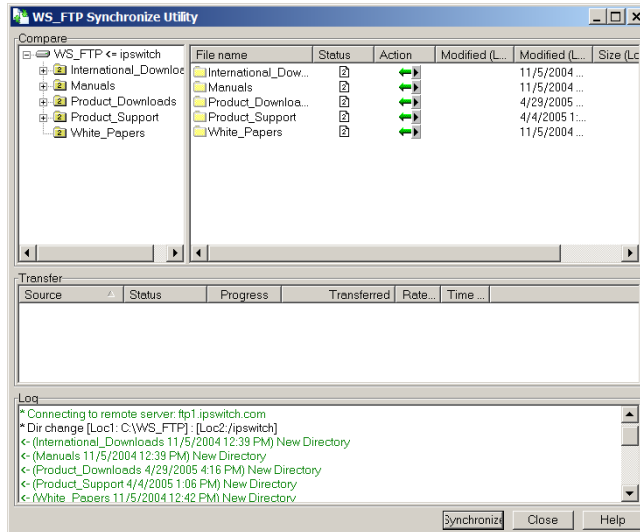
The following is an example of how you might use the Synchronize Utility.



When you click the **Execute** button, the control file named *untitled.ctl* (the name is displayed in the title bar for the dialogue) is executed according to the parameters set on the WS_FTP Synchronize Utility screen:

- Synchronize makes a connection with the FTP site defined in the **Location 2** box and logs on with the information stored on the site profile.
- After the connection is made, the program navigates to the 'ipswitch' directory on the FTP site and the 'C:\WS_FTP Pro' directory on your local system as defined in the **Location 1** box.
- According to the options selected, **Location 1** is to be updated with all files found in **Location 2**.
- If you want to schedule this task to run on a regular basis, or at a certain time of day, click the **Schedule** button. The **Schedule Item Properties** dialog appears. Use this dialog to set the time, date, and frequency of the synchronize job. For more information on using the WS_FTP Scheduler, see "Using the Scheduler" on page 13.
- Since the **Visual compare only** option is selected, the transfers will not be executed, but the Compare dialog will appear comparing the two locations, and displaying potential

actions to be taken by the utility. You can change the actions to be performed on this dialog, then click **Execute** to start the process.



Using a Control File

The Synchronize Utility uses *control files* (.ctl) to store configuration options and settings for your synchronize jobs. This saves you from having to set up a job each time you want to run it.

To create a control file:

- 1 Choose a directory for both **Location 1** and **Location 2**. You can enter a local directory in either box, or click the **Browse (...)** button to choose a local folder or a remote site from a site profile. Click the **Local** tab on the **Folder Selection** dialog to choose a local folder.
- 2 Select the options you want to use.
- 3 Select the mode you want to execute.
- 4 Review the **Status and Actions** that will perform and make any adjustments you need to make. If you make an adjustment, your status will be changed to **Customized**.
- 5 Identify any **Exclusions** or **Inclusions** you may have.
- 6 Click **Save** to save the control file.

Now you can use the control file anytime you use Synchronize. You can also open and edit the control file when you want to change the Synchronize options.

Exclusions and Inclusions

With the Exclusion and Inclusion system, you can enter a file name, file extension, or search string to have the Synchronize Utility ignore or include any files that match the string. Wildcards (* and ?) can be used for unknown file names or several files of a similar name or type.

To add an exclusion

- 1 Click the **Add** button in the **Exclusions** section of the dialog. The **Exclusion** dialog appears.
- 2 In the **Exclusion** dialog, enter what you want to exclude in the Rules box. If you are using the **Absolute location** type, you can click the **Browse** button to select the file or folder.
- 3 In the **Type** box, select what type of item you want to apply the exclusion to:
 - **Apply to files.** Select to apply the exclusion to files only.
 - **Apply to folders.** Select to apply the exclusion to folders only.
 - **Apply to both.** Select to apply the exclusion to both files and folders.
 - **Absolute location.** Select to apply the exclusion to a specific file or folder in a specific location.
- 4 Click **OK** to add the exclusion to the list.

Exclusion Examples

Here are a few examples of exclusions, followed by an explanation of each.

Absolute file exclusions

Exclusion rule: /mydir/*.exe

Type: Absolute location

This will exclude all .exe files in the mydir remote directory, but the path is taken from the root of the remote system.

Exclusion rule: c:\mydir*.exe

Type: Absolute location

This will exclude all .exe files in the c:\mydir local directory.

Exclusion rule: /mydir/nextdir/myfil?.*

Type: Absolute location

This will exclude any file beginning with myfil with one arbitrary character and any extension in the directory /mydir/nextdir.

Absolute directory exclusion

Exclusion rule: /m?dir

Type: Absolute location

This will exclude all directories that match the mask m?dir, but the path is taken from the root of the file system. The ? is a substitute for any single character.

Exclusion rule: c:\m?dir

Type: Absolute location

This will exclude all directories on the c: drive that match the mask m?dir. The ? is a substitute for any single character.

Relative directory exclusions

Exclusion rule: mydir

Type: Apply to folders

This will exclude any directory named mydir anywhere in the file system.

Exclusion rule: m*ir

Type: Apply to folders

This will exclude any directory that matches the mask m*ir from anywhere in the file system. The * means that the name can have any number and value of character in between the "m" and the "ir."

Relative file exclusion

Exclusion rule: mydir*.exe

Type: Apply to files

This will exclude any .exe files in any directory named mydir anywhere in the file system.

Relative file/folder exclusion

Exclusion rule: ~*

Type: Apply to both

This will exclude any file or folder starting with the ~ character, anywhere in the file system.

To add an inclusion

- 1 Click the **Add** button in the **Inclusions** section of the dialog. The **Inclusion** dialog appears.
- 2 In the **Inclusion** dialog, enter what you want to exclude in the Rules box. If you are using the **Absolute location** type, you can click the **Browse** button to select the file or folder.
- 3 In the **Type** box, select what type of item you want to apply the exclusion to:
 - **Apply to files.** Select to apply the inclusion to files only.
 - **Apply to folders.** Select to apply the inclusion to folders only.
 - **Apply to both.** Select to apply the inclusion to both files and folders.
 - **Absolute location.** Select to apply the inclusion to a specific file or folder in a specific location.
- 4 Click **OK** to add the inclusion to the list.

Inclusion Examples

Here are a few examples of inclusions, followed by an explanation of each.

Absolute file inclusions

Inclusion rule: /mydir/*.exe

Type: Absolute location

This will include all .exe files in the mydir remote directory, but the path is taken from the root of the remote system.

Inclusion rule: c:\mydir*.exe

Type: Absolute location

This will include all .exe files in the c:\mydir local directory.

Inclusion rule: /mydir/nextdir/myfil?.*

Type: Absolute location

This will include any file beginning with myfil with one arbitrary character and any extension in the directory /mydir/nextdir.

Absolute directory inclusion

Inclusion rule: /m?dir

Type: Absolute location

This will include all directories that match the mask m?dir, but the path is taken from the root of the file system. The ? is a substitute for any single character.

Inclusion rule: c:\m?dir

Type: Absolute location

This will include all directories on the c: drive that match the mask m?dir. The ? is a substitute for any single character.

Relative directory inclusions

Inclusion rule: mydir

Type: Apply to folders

This will include any directory named mydir anywhere in the file system.

Inclusion rule: m*ir

Type: Apply to folders

This will include any directory that matches the mask m*ir from anywhere in the file system. The * means that the name can have any number and value of character in between the "m" and the "ir."

Relative file inclusion

Inclusion rule: mydir*.exe

Type: Apply to files

This will include any .exe files in any directory named mydir anywhere in the file system.

Relative file/folder inclusion

Inclusion rule: ~*

Type: Apply to both

This will include any file or folder starting with the ~ character, anywhere in the file system.

Executing Control Files Using HotSync

You can save a control file (.ctl) as an icon on your desktop and utilize the HotSync functionality to automatically synchronize files and folders. This feature is similar to the HotDrop feature.

To set up a control file to use HotSync:

- 1 Go through the process of creating a control file.
- 2 Save the control file as a shortcut icon on your desktop.
- 3 To initiate the Synchronize job, double-click the shortcut icon. The Synchronize Utility is displayed to show the progress of the synchronization.

The files and folders are automatically synchronized on the two locations defined in the control file.

Using the Synchronize Utility from the Command Line

The Synchronize Utility has been designed to be a command line utility that can be scheduled and run unattended. To do this, you must first use the user interface to set up and test a control file for the synchronization task.

After this has been done, you can run the Synchronize Utility directly from the command line by using the following syntax:

```
ftpsync controlfile.ctl
```

You can also add this command to a batch file and schedule it using WS_FTP Scheduler. For more information on using command line batch files, see “Using a Batch File” on page 53. For more information on using the WS_FTP Scheduler, see “Using the Scheduler” on page 13.

Script Utility

The WS_FTP Script Utility lets you group any number of file transfer tasks into a script that can be executed with one action. This can be especially useful for file transfers that you do repeatedly.

This chapter provides an overview of the Script Utility and some examples of how you might use it. For detailed instructions on using the Script Utility, start the Script Utility and use its online Help.

Using scripts, you can:

- Connect to FTP sites
- Upload or download files
- Set the transfer mode
- Make, delete, and rename folders
- Delete and rename files
- Execute a DOS command

Scripts can also have some limited flow control. They can:

- Check for the success or failure of the previous command
- Jump to another point in the script if either success or failure is detected

Suppose you post weekly reports on your company's server for your co-workers in other cities to download. Let's assume you place the current week's reports in a folder named *Current*. You could create a script that:

- Changes the name of last week's *Current* folder to *Prior*.
- Creates a new folder named *Current*.
- Uploads your current weekly reports to the *Current* folder.

You can also create scripts for downloads that you do repeatedly.

Chapter 6

In this Chapter

Starting the Script Utility

Writing and Debugging Scripts

Running a Script from the Script Utility

Example

Starting the Script Utility

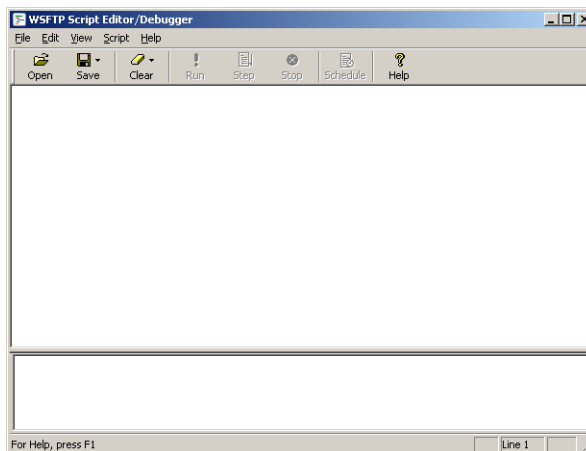
Start the Script Utility by doing one of the following:

- From the **Tools** menu, select **Script Utility**.
- From the **Start** menu, select **Programs > Ipswitch WS_FTP Professional > Utilities > WS_FTP Script Utility**.

Writing and Debugging Scripts

To write and/or debug a script, start the Script Utility.

The Script Editor/Debugger window appears.



For a complete list of scripting commands, see “Script Command Reference” in the online help.

Executing Scripts

You can execute scripts from either the Command Prompt or from the Script Utility itself.

Executing a Script from the Command Prompt

Go to the Command Prompt and type *ftpscript* followed by the appropriate command line parameters.

For example:

```
ftpscript -f script1.scp
```

There are other parameters you can use with the *ftpscript* command. For detailed information, go to the Script Utility online Help and see “Executing Scripts.”

To be able to run a script from any location on your hard disk, we recommend that you place the Script Utility folder in the Path statement in your *Autoexec.bat* file – if you are running Microsoft Windows XP. If you’re using Windows 2000 or Windows 2003, add the WS_FTP Professional folder to the path variable in the System Environment.

Running a Script from the Script Utility

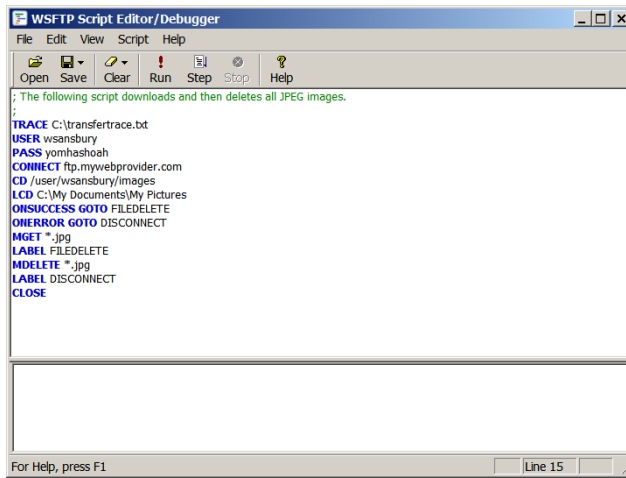
To run a script from the Script Utility, start the utility, open the script, then click **Run**.

Example

In the following example, the script executes the following sequence of commands:

- 1 Turns on the Trace command to send detailed information to the *transfertrace.txt* file.
- 2 Logs onto the server with the user name *wsansbury*.
- 3 Logs onto the server with the password *yomhashoah*.
- 4 Connects to the FTP server *ftp.mywebprovider.com*.
- 5 Changes the remote directory to */user/wsansbury/images*.
- 6 Changes the local directory to *C:\My Documents\My Pictures*
- 7 If the MGET is successful, the script executes the FILEDELETE label.
- 8 If the MGET fails, the script executes the DISCONNECT label.
- 9 All files ending in *.jpg* are copied from the remote directory to the local directory.
- 10 This line identifies the FILEDELETE label.
- 11 All files ending in *.jpg* are deleted from the */user/wsansbury/images* remote folder.
- 12 This line identifies the DISCONNECT label.

13 CLOSE disconnects from the FTP server



The screenshot shows the WSFTP Script Editor/Debugger window. The title bar reads "WSFTP Script Editor/Debugger". The menu bar includes "File", "Edit", "View", "Script", and "Help". The toolbar contains icons for "Open", "Save", "Clear", "Run", "Step", "Stop", and "Help". The main text area contains the following script:

```
; The following script downloads and then deletes all JPEG images.  
;  
TRACE C:\transfertrace.txt  
USER wsansbury  
PASS yomhashoah  
CONNECT ftp.mywebprovider.com  
CD /user/wsansbury/images  
LCD C:\My Documents\My Pictures  
ONSUCCESS GOTO FILEDELETE  
ONERROR GOTO DISCONNECT  
MGET *.jpg  
LABEL FILEDELETE  
MDELETE *.jpg  
LABEL DISCONNECT  
CLOSE
```

At the bottom of the window, there is a status bar that reads "For Help, press F1" and a line indicator showing "Line 15".

Search Utilities (local and remote)

WS_FTP Client lets you search local files or a remote site for files that match your search criteria. After the files are found, you can transfer the files to the appropriate local or remote location.

Remote search is especially useful if you are looking for files on a large, complex FTP site.

Local search helps you find files or file content on your computer. The Local search provides two types of search capabilities:

- **File content.** Use the Google™ Desktop or Copernic Desktop Search™ to search for content within files on your computer.
- **File name.** Use the Windows® Desktop Search to search for files by file name on your computer.

This chapter provides an overview of the local and remote search utilities and some examples of how you can use them. For more information, see the online Help.

Chapter 7

In this Chapter

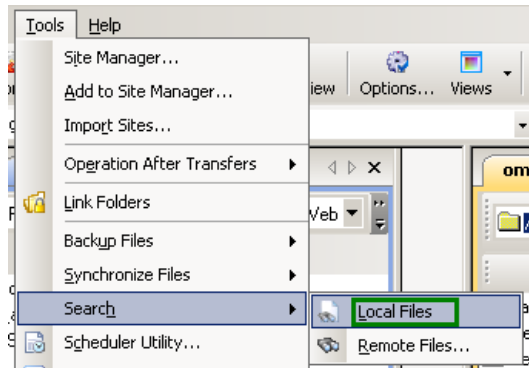
Using Local Search

Using Remote Search

Examples

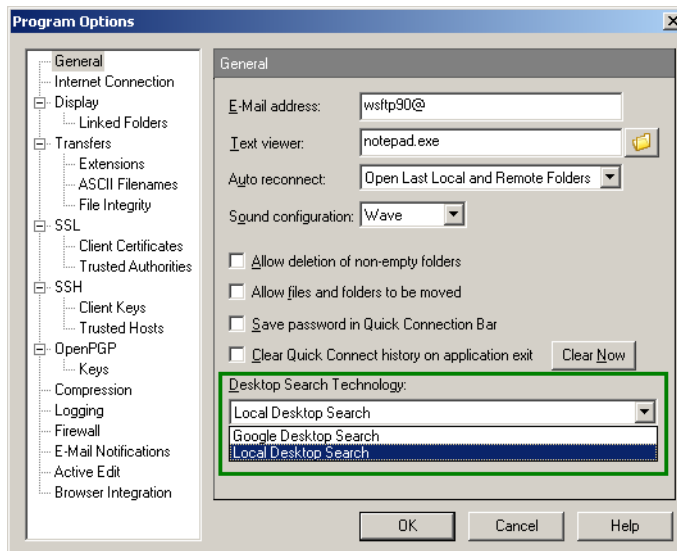
Using Local Search

Use the **Local Files** Search to search for files by *file name* or search for *file content* on your computer.

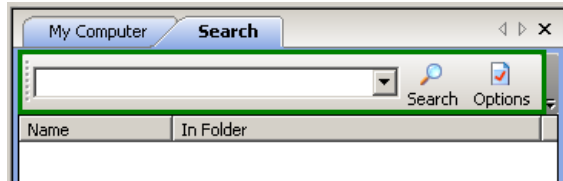


To find files on your computer (searching for file names):

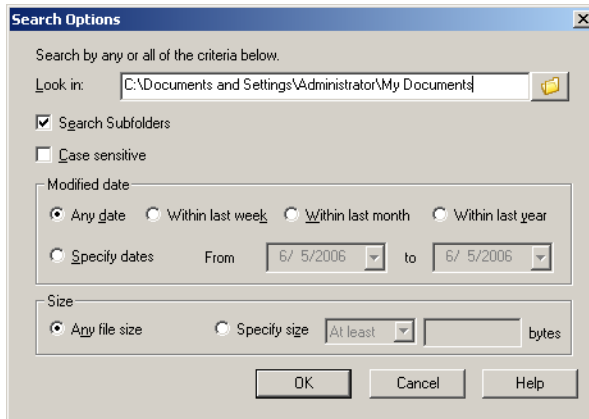
- 1 Make sure that the Local Desktop Search is enabled in the Program Options, under **Tools > Options > General**, in the **Desktop Search Technology** box click **Local Desktop Search**, then click **OK**.



- From the **Tools** menu, click **Search > Local Files**. The Search tab opens in the local connection window.



- In the **Search** box, enter the file name or part of the file name you want to find. You can use wildcard characters such as * and ?. For additional search options, click **Options**. The Search Options dialog box opens. Click **Help** for more information about the Search Options dialog.



- Click . The search results are displayed in the search results list.
- Select the file that you want to upload from the search results. Upload the files to the FTP server you select. For more information about search result transfer options, see the following section “Using the Local Search Results” on page 43.

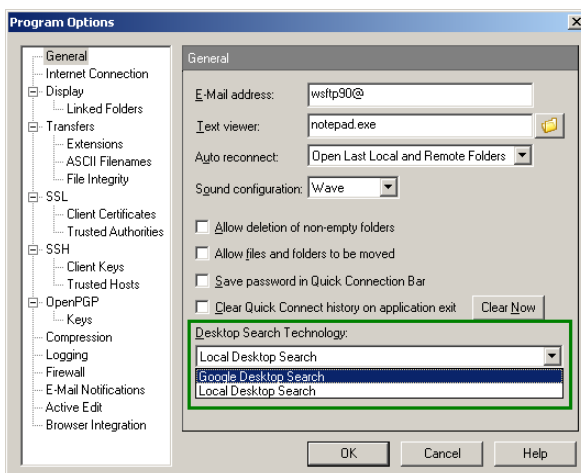
IMPORTANT: Only a single file at a time can be selected and transferred from the search results.

You can also search for content within files on your computer with the Google™ Desktop Search or Copernic Desktop Search™ options.

NOTE: Copernic or Google Desktop Search utility must be installed to search for file content using their integrated search engine from the Ipswitch WS_FTP client. If the desktop search utility is installed on your computer, it will appear in the **Program Options > General > Desktop Search Technology** list.

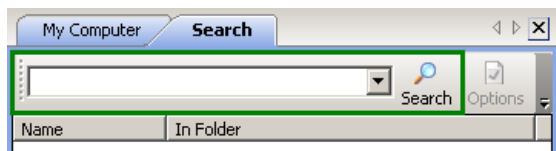
To find file content in files on your computer:

- 1 Make sure the Local Desktop Search is enabled in the Program Options, under **Tools > Options > General**, in the **Desktop Search Technology** box click your preferred desktop search engine, **Google Desktop Search** or **Copernic Desktop Search**, then click **OK**.



NOTE: If the **Google Desktop Search** or the **Copernic Desktop Search** utility is installed on your computer, it appears in the **Desktop Search Technology** list.


- 2 From the **Tools** menu, click **Search > Local Files**. The Search tab opens in the local connection window.



- 3 In the **Search** box, enter the file content search criteria for the text you want to find.

NOTE: The **Google Desktop Search** or the **Copernic Desktop Search** parameters are determined by each search utility. Refer to the Help information to learn about using each utility's unique search parameter requirements.

NOTE: The search **Options** button is disabled when the **Google Desktop Search** or the **Copernic Desktop Search** utility is installed and enabled. If the desktop search utility is installed on your computer, it appears in the **Tools > Options > General > Desktop Search Technology** list.

- 4 Click . The search results are displayed in the search results list below.
- 5 Select the file that you want to upload from the search results. Upload the files to the FTP server you select. For more information about search result transfer options, see the following section "Using the Local Search Results" on page 43.

IMPORTANT: Only a single file at a time can be selected and transferred from the search results.

Using the Local Search Results

After you locate a file on a local site, you can right-click, then click:

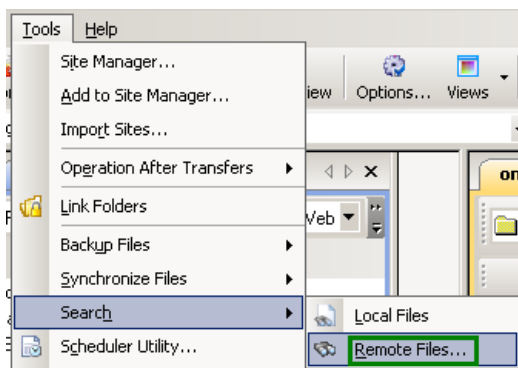
- **Upload using the WS_FTP Upload Wizard.**
- **Send to [favorites site name]** (HotDrop file) to transfer the file to the HotDrop's associated remote site.
- **WS_FTP Transfer > Compress and Transfer as [filename.zip]** to transfer the file to the active remote site.
- **WS_FTP Transfer > Encrypt and Transfer** to use an encryption key to encrypt a file before transfer.
- **WS_FTP Transfer > Sign and Transfer** to add your digital signature to a file. By adding your digital signature, you provide a higher degree of confidence in the file integrity for those downloading your files.
- **WS_FTP Transfer > Encrypt, Sign and Transfer** to first encrypt a file, then to add your digital signature.
- **Send to Scheduler** to open the Schedule Properties dialog and schedule a file transfer.

To transfer a file:

- 1 In the search results dialog box, select the file you want to transfer, then select one of the short cut (right-click) menu options described above.
- 2 Select the site or folder to upload the file to.

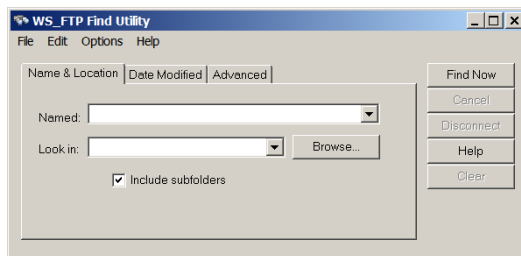
Using Remote Search

Use the **Remote Files** search to find files by *file name* on a remote site.



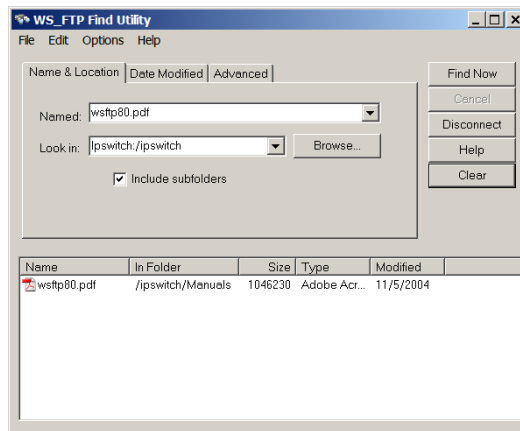
To find files on an FTP site:

- 1 Start the Find Utility by doing one of the following:
 - From the **Tools** menu, click **Search > Remote Sites**. The WS_FTP Find Utility dialog opens.
 - OR -
 - From the **Start** menu, select **Programs > Ipswitch WS_FTP Professional > Utilities > WS_FTP Find Utility**.



- 2 Use the **Look in** list box to select a site previously searched or click the **Browse** button to specify the site to which you will connect and search. You can also type in a host name or FTP URL.
- 3 Enter your search criteria. You can search by name, date modified, size, or any combination of the three.
- 4 Click **Find Now**. The Find Utility connects to the FTP site and searches according to your criteria.

For example, if you search the Ipswitch FTP site for a file named *wstfp80.pdf*, the following results are displayed.



Using the Remote Search Results

After you locate a file on a remote site, you can:

- Transfer it.
- Schedule it for transfer at a later time, by selecting **Send to Scheduler** from the right-mouse menu.

To transfer a file:

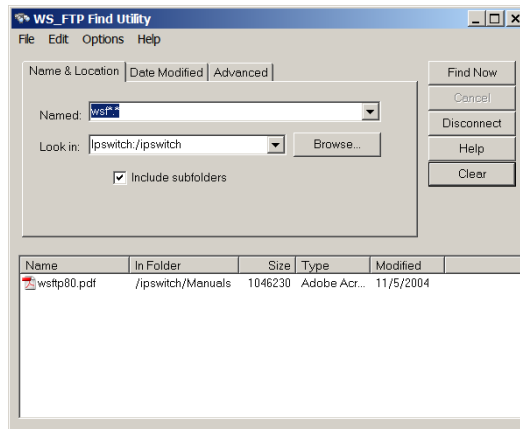
- 1 In the dialog box above, select the file you want to transfer, and select **Transfer** from the right-mouse menu. A browse window appears.
- 2 Select the folder to which you want to download the file.

Examples

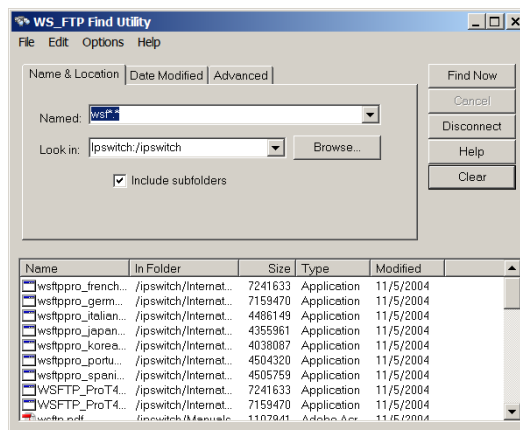
The following are examples of different types of searches.

Finding a File When You Are Not Sure of Its Name

The example below shows how to search for a file when you are not sure of the correct full name. In this case, the name begins with `ws_f`, but the rest of the name is unknown. The `*` at the end is a “wildcard” that takes the place of the missing characters. When this search is run, the Find Utility locates every file on the site that begins with `ws_f`.



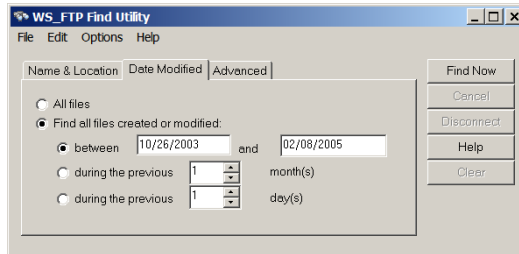
The results of the search are shown below.



You can also use wildcard characters (* and ?) at the beginning of a name if you are unsure about the beginning characters. For example, searching for *.exe returns all files ending with the .exe file extension.

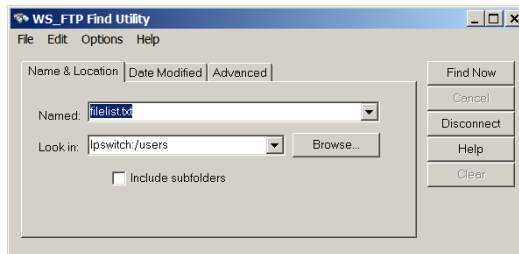
Finding a File Modified During a Specific Time Period

To search for a file modified during a specific time period, click the **Date Modified** tab and set the options you need. In the example below, the WS_FTP Find Utility will search for all files modified between April 10, 2001 and April 20, 2001.



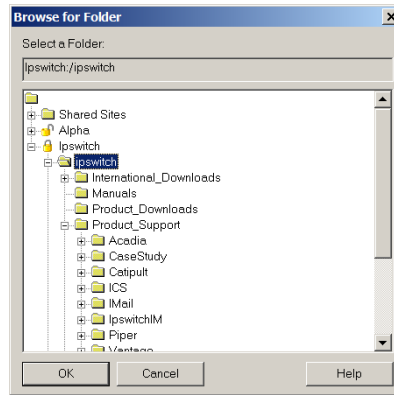
Finding a File in a Particular Folder

If you know the name of the folder in which the file you are looking for is stored, you can narrow your search by having the Find Utility look only in that folder.



To locate a particular folder:

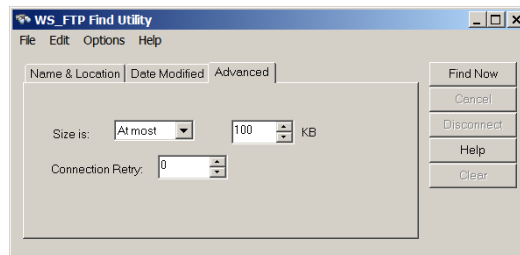
- 1 Click the **Browse** button next to the **Look In** field to connect to the selected site and display a list of the available folders.



- 2 Select the folder that you want to search.
- 3 Click **OK**. The **Look In** box is filled in with the path of the selected folder.
- 4 Click **Find Now** to search through the files in that folder.

Finding a File Smaller Than a Certain Size

If you want to limit the size of the files found in a given search, enter the FTP site and file name on the **Name & Location** tab, then click the **Advanced** tab.



In the **Size is** box, you can select **At least** or **At Most** then enter the file size in kilobytes in the **KB** box.

Using the Command Line

You can use the command line from the command prompt to run the Ipswitch WS_FTP Professional interface.

When you use the command line, you are actually running a *subset* of the functionality of the Ipswitch WS_FTP Professional interface. Using the command line, you can:

- Upload and download files
- Specify ASCII or binary transfer mode
- Convert file names to lowercase when uploading
- Set up pre-scheduled transfers
- Create batch files that will handle multiple commands

NOTE: Though some command lines in this chapter may wrap across multiple lines, all command lines should be entered on one line.

Basic Command Line Syntax

The following illustrates the correct command line syntax, broken down by argument type.

```
(command name) (source) (destination)
```

Written out, a command using this format would look like this:

```
wsftppro -s local:c:\tartan.bmp -d robert!border:/pub/  
tartan.bmp
```

The section below shows the breakdown of that command into the parts illustrated above. The command name `wsftppro` must always be placed in the beginning of the command.

NOTE: So you can use the command line from any location on your hard disk, we recommend that you place the WS_FTP Pro folder in the Path statement in your *Autoexec.bat* file, if you are running Windows 2000, Windows 2003, or Windows XP. Otherwise, change to your WS_FTP Professional folder when you use the commands.

Chapter 8

In this Chapter

Basic Command Line Syntax

File Transfer Options

Transferring Files and Folders
with Spaces in the Name

Using a Batch File

Multiple Folders or Commands

Pre-scheduled Transfers
("Automated Transfers")

Extras

Summary of Arguments

Return Codes

Site Information

```
wsftppro -s local:c:\tartan.bmp -d robert!border:/pub/tartan.bmp
```

If you use a configured site from the command line, Ipswitch WS_FTP Professional uses the User ID, Password, and Account Name you saved in the site configuration. To use a configured site, enter the site name in front of the remote directory (which can be either the source or the destination). If the configured site is stored in a folder, you must also enter the folder name. Separate the folder name from the site name by using the ! symbol (*sitefolder!site-name*). In the example above, we use the *border* site configuration stored in the *robert* folder.

If you have saved a password with the site, Ipswitch WS_FTP Professional logs you on using the saved password. If you have *not* saved a password with the site, you can enter it in the command line by using the `-w` argument.

For example:

```
wsftppro -u username -w password -s robert!border:/pub/tartan.bmp -d local:c:\armstrong\
```

If you have saved an account name in the site configuration, the command line logs you on using the saved account name. If you have *not* saved an account name, you can use the `-c` argument to specify the account name when you enter the command line. For example:

```
wsftppro -c account -s robert!border:/pub/tartan.bmp -d local:c:\armstrong\
```

If you do not use a configured site profile, you must put the IP address, URL, or host name in the source or destination argument to connect to that site. See the **Transfer Source** and **Transfer Destination** sections for examples of command line commands that use this.

Transfer Source

```
wsftppro -s local:c:\tartan.bmp -d robert!border:/pub/tartan.bmp
```

The transfer source argument begins with the `-s` argument, followed by the label for the source, and the path to the item or items being transferred. If the source of the transfer is your local system, the source label is *local*. If you are doing a download, the source label is either the site folder!site name or the IP address, FTP URL, or Host name of the remote site. For example:

```
wsftppro -s robert!border:/pub/tartan.bmp -d local:c:\tartan.bmp
```


or

```
wsftppro -s ftp://username:password@border.ipswitch.com/pub/tartan.bmp -d  
local:c:\armstrong\
```

or

```
wsftppro -u username -p password -s 156.21.50.78:/pub/tartan.bmp -d local:c:\
```

Transfer Destination

```
wsftppro -s local:c:\tartan.bmp -d robert!border:/pub/tartan.bmp
```

The transfer destination argument begins with the `-d` argument, followed by the label for the destination, and the path to where item or items are being transferred to. If the destination is your local system, the destination label is *local*. If you are doing an upload, the destination label is either the site folder!site name (as in the example above) or the IP address, FTP URL, or Host name of the FTP site. For example:

```
wsftppro -s local:c:\tartan.bmp -d ftp://username:password@border.ipswitch.com/pub/  
tartan.bmp
```

or

```
wsftppro -s local:c:\tartan.bmp -u username -w password -d 156.21.50.78:/pub/tartan.bmp
```

File Transfer Options

Uploading Files

To upload a file, use the basic command syntax with the file or files you want to upload identified in the source argument. For example; if you want to copy the file *tartan.bmp* from the *armstrong* folder on your C: drive and place it in the */pub/* folder on the site identified in the *border* site profile use:

```
wsftppro -s local:c:\armstrong\tartan.bmp -d robert!border:/pub/tartan.bmp
```

or

```
wsftppro -s local:c:\armstrong\tartan.bmp -d robert!border:/pub/
```

Notice that the second option omits the file name from the destination location. You can do this when you want the transferred file to have the same name as it does in the source location. However, note that you *must* enter the trailing slash after the destination folder in order for this to work.

Downloading Files

Use the same command syntax as described above for downloading files, except that, the source of the transfer is the remote system instead of your local system.

```
wsftppro -s robert!border:/pub/tartan.bmp -d local:c:\armstrong\tartan.bmp
```

In the example above, you are connecting to the remote system using the *border* site profile and downloading the *tartan.bmp* file to the *armstrong* folder on your C: drive.

Renaming Files

To rename a file during the upload, enter a new file name after the destination folder. For example, to upload the *Tag.doc* file and rename it *NewTag.doc* on the FTP site, type:

```
wsftppro -s local:c:\sports\Tag.doc -d robert!border:/pub/drop/NewTag.doc
```

Adding Current Date and Time Information to File Names

To automatically add the current date and time information during the upload, enter the *%date* attribute after the file name in the destination folder. For example, to include the date and time on the *Tag.doc* file on the FTP site, type:

```
wsftppro -s local:c:\sports\Tag.doc -d robert!border:/pub/drop/Tag%date.doc
```

Compressing Files

To compress a file to a .zip file during the upload, enter the *-compress* argument, type:

```
wsftppro -compress -s local:c:\sports\Tag.doc -d robert!border:/pub/drop/Tag.doc
```

Transferring multiple files from the same location

If all the files you want to transfer are in the same folder, you can use the wildcard characters, * and ?, in the file name. For example, if you want to upload all of the files in C:\Sports\use:

```
wsftppro -s local:c:\sports\*. * -d robert!border:/pub/drop/
```

Or, to transfer all .doc files in the same folder, enter:

```
wsftppro -s local:c:\sports\*.doc -d robert!border:/pub/drop/
```

To transfer multiple files not in the same folder, see “Chapter 8: Multiple Folders or Commands” on page 54.

Converting File Names to Lower Case

When uploading files, you can have Ipswitch WS_FTP Professional convert file names to lower case by adding the *-lower* argument at the end of the command line. For example, if the file you want to transfer is named *Tag.doc*, Ipswitch WS_FTP Professional can upload it as *tag.doc* by using:

```
wsftppro -s local:c:\sports\Tag.doc -d robert!border:/pub/drop/ -lower
```

File Transfer Modes

You can transfer files in binary mode or in ASCII mode. We recommend using binary mode to transfer all files unless you know the file contains only text, then you are able to use ASCII mode.

To specify the transfer mode, you use the `-binary` or `-ascii` argument at the end of the command string.

When you *do not* specify the transfer mode in the command line, Ipswitch WS_FTP Professional transfers the file in whatever file transfer mode is the default in the Ipswitch WS_FTP Professional interface. Therefore, if you plan on using the command line more than just occasionally, set the **Startup Transfer Mode** to Auto Detect.

Transferring Files and Folders with Spaces in the Name

If you are transferring a file whose name has spaces in it, you have two options. You can enclose that portion of the command line in quotes, or use the short name of the file (as shown in the Dir listing you get from the command prompt.)

Enclosing the Command Line in Quotes

If the file you want to transfer is named *my tartan.bmp*, use:

```
wsftppro -s "local:c:\armstrong\my tartan.bmp" -d "robert!border:/pub/my tartan.bmp"
```

Using the Short Name

If the file you want to transfer is named *my tartan.bmp* in Windows, but appears as *my~1.bmp* when you use the Dir command at the command prompt, you can use the short file name to transfer the file (as shown in the Dir listing you get from the command prompt). To do this (using the first example in this chapter), enter:

```
wsftppro -s local:c:\armstrong\my~1.bmp -d robert!border:/pub/my~1.bmp
```

Using a Batch File

NOTE: You cannot run two batch files at the same time.

Instead of typing the command at the command prompt, you may find it more expedient to enter the command line into a batch file (a text file with the file extension *.bat*). This makes it easier to correct mistakes and to run the same command again.

You run the command by invoking the *.bat* file at the command prompt, double-clicking the icon for the *.bat* file from within Windows, or running the *.bat* file from another application (such as WS_FTP Scheduler).

Here is a batch file (for the example at the beginning of this chapter) as viewed from a Windows text editor:



When you run the batch file named *tartan.bat*, Ipswitch WS_FTP Professional uploads the *tartan.bmp* file to the *border* FTP site.

Note that using a batch file involves placing the command name `wsftppro` at the beginning of *each* line in the file. Since each instance of the command name starts the Ipswitch WS_FTP Professional application (and connects to the remote site), you would only use a batch file to work with one command at a time. If, on the other hand, you want to issue a *group* of commands, follow the procedure in “Chapter 8: Multiple Folders or Commands” on page 54.

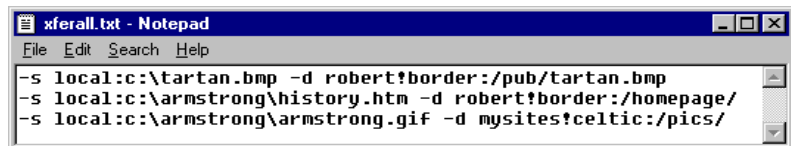
Remember that if a file name has a space in it, you must enclose that entire argument in quotes.

Multiple Folders or Commands

To transfer files to or from multiple source or destination folders, or to issue multiple commands, use the `-m` argument followed by the name of a text file that contains the commands. To transfer files from several locations on the hard disk described in the first example in this chapter, enter (at the command prompt or in a batch file) something like:

```
wsftppro -m xferall.txt
```

where the content of *xferall.txt* (as viewed in Windows Notepad) is:



Note that:

- The command name `wsftppro` must *not* appear in the text file
- Each line of text must contain only one command line.

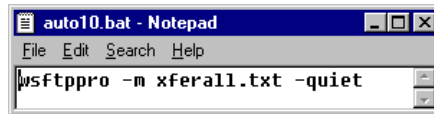
- Each command line can contain any of the arguments described in this chapter.
- If a file or folder name has a space in it, you must enclose that entire argument in quotes.

Pre-scheduled Transfers (“Automated Transfers”)

You can use the command line to schedule transfers that you want to run automatically. To do this, you create a batch file as described above, and then run the batch file using WS_FTP Scheduler. For more information, see “Chapter 3: Scheduler Utility” on page 13.

When you use the command line to perform a pre-scheduled transfer, you may use the `-quiet` parameter to prevent Ipswitch WS_FTP Professional from displaying a message box if an error occurs. This is particularly useful for avoiding a situation in which Ipswitch WS_FTP Professional might otherwise prompt for user input, such as clicking the **OK** button in an error message. This way, you can pre-schedule transfers to run automatically when you’re not at your computer. (When you return to the computer, you can always check the log file to see if there were any problems.)

To use the examples shown previously, you could do a pre-scheduled transfer by creating the following batch file:



```
auto10.bat - Notepad
File Edit Search Help
wsftppro -m xferall.txt -quiet
```

as well as the following text file:



```
xferall.txt - Notepad
File Edit Search Help
-s local:c:\tartan.bmp -d robert!border:/pub/tartan.bmp
-s local:c:\armstrong\history.htm -d robert!border:/homepage/
-s local:c:\armstrong\armstrong.gif -d mysites!celtic:/pics/
```

Then, you could have the Scheduler run the *auto10.bat* file at 10:00 PM each night.

Remember that if a file name has a space in it, you must enclose that entire argument in quotes.

Extras

Here are a few more arguments and uses of the command line that some users have found helpful. These are listed below.

To have Ipswitch WS_FTP Professional display a dialog box that prompts you for the command line, type: `wsftppro -ask`

To launch the Ipswitch WS_FTP Professional interface and default to the border site inside a folder named `robert`: `wsftppro -p robert!border`

To prevent Ipswitch WS_FTP Professional from displaying error messages, use the `-quiet` argument. This is useful if you want to do automated transfers when no one is around to respond to a message. An example:

```
wsftppro -s local:c:\armstrong\tartan.bmp -d robert!border:/pub/tartan.bmp -quiet
```

Summary of Arguments

Here is a list of all arguments you can use in the command line.

Arguments (alphabetical)	When to use	Important restrictions
<code>-ascii</code>	Use <code>-ascii</code> when transferring text files.	
<code>-binary</code>	Use <code>-binary</code> when transferring non-text files such as executable programs, word processing documents, and so on.	
<code>-c account</code>	Use <code>-c</code> to work with sites that require an account for the user to log in, or to access partitions. <i>account</i> is the name of your account on the remote site.	If provided, overrides the account in the site configuration.
<code>-compress</code>	Use <code>-compress</code> to turn files into a .zip compressed file.	
<code>-d path_and_filename</code>	Use <code>-d</code> to indicate the destination path and desired file name of the file you want to upload or download.	You must specify one of the following: -d local: -d folder!profile -d ip address: -d ftp://address
<code>-%date</code>	Use <code>-%date</code> to add a date and time stamp as part of the file name.	
<code>-lower</code>	Use <code>-lower</code> to have Ipswitch WS_FTP Professional convert file names to lower case letters when you transfer from your PC to a remote site.	If you use the <code>-lower</code> argument, it must be at the very end of the command.
<code>-m text_file</code>	Use <code>-m</code> to do transfers that involve multiple source locations, multiple destinations, or multiple commands. <i>text_file</i> is the name of the file that contains the commands.	
<code>-quiet</code>	Use <code>-quiet</code> to prevent Ipswitch WS_FTP Professional from displaying message boxes.	
<code>-s path_and_filename</code>	Use <code>-s</code> to indicate the source path and file name of the file you want to upload or download.	
<code>-u userID</code>	Specifies a user ID. Use <code>-u</code> to use sign on using the userID.	If provided, overrides the user ID in the site configuration.
<code>-w password</code>	Use <code>-w</code> to identify <i>password</i> as the password to use to connect to the ftp site.	If provided, overrides the password in the site configuration.

Return Codes

Messages returned in response to a wsfppro command can include the following codes:

Return Code	Description
0	Success
1	Failed to load site
2	Source parsing error
3	Destination parsing error
4	Source and destination are local
5	Failed to connect with source
6	Failed to connect with destination
7	Failed to get source folder
8	Failed to get destination folder
9	No source filename
10	Destination filename specified with wild cards in the source
11	Wildcards in the destination
12	Source file not found
13	Transfer failed
14	No command line specified (starts the application user interface)
15	No command file - failed to open reference file
16	Failed to initialize

Textual Error Messages

This Appendix lists common textual error messages. Each error message is followed by an explanation of the error, and some possible workarounds or solutions, if any exist.

Some of these error messages are returned by the FTP protocol and will appear in the Connection Log, preceded by a three-digit reply code.

Others of these textual error messages may appear in dialog boxes generated by Ipswitch WS_FTP Professional or your operating system.

For more information, see the **KnowledgeBase** on the Ipswitch web site at <http://support.ipswitch.com>.

“Blocking call canceled”

There are several possible causes for this problem. Try these tests in the order shown:

- 1 Disconnect from the FTP site if you are currently connected to it. Then turn on passive mode. To do this:
 - Select **Tools > Site Manager**.
 - Select the site, then click **Edit**.
 - In the Site Options, select **Advanced**, then select **Use passive mode for data connections**.

After you have done this, try reconnecting to the site.

- 2 If you still receive this error message, set the network timeout for the site to 120 in the interface:
 - Select **Tools > Site Manager**.
 - Select the site, then click **Edit**.
 - In the Site Options, select **Advanced**, then enter 120 or higher for the **Network Timeout**.

Appendix A

- 3 If you still receive this error after making the above changes, try the command line FTP (not the WS_FTP Command Line) and see if you can connect and how long it takes. After you know how long it takes to connect, enter this time into the **Network Timeout** setting on the **Advanced** dialog of the site options as described above.
- 4 If you still cannot connect please contact the FTP server administrator for assistance.

“Connection refused” or “Connection closed by remote”

Either the host is not running an FTP server program, or the FTP site is accepting connections only from certain clients, or there is a conflict within your network. See page 59 and follow steps 3 and 4.

“Disk quota exceeded”

The disk quota is not determined by Ipswitch WS_FTP Professional; it exists on the FTP site. You can either delete some files on the site to make room for your upload (if you have permission) or get more space from the site administrator.

“File too large to download”

This message is coming from the FTP site that you are connected to. This site has a limit on how large a file you can download.

“Logon failure; Quitting.”

The FTP site is not recognizing or accepting your user ID and/or password. Contact the FTP site administrator to verify that you are using the correct User ID and password.

“MDTM”

The current FTP site does not support Month-Day-Time-Marking; this means that after the file was uploaded, Ipswitch WS_FTP Professional attempted to preserve the date and time, but the FTP site does not support this feature. However, the files will transfer correctly. Note that this is not a fatal error, even though it displays in red.

You can disable this option by selecting **Preserve file time on upload (MDTM support required)** on **Site Properties: Session**.

“User access denied”

The error “530 user access denied” indicates that you are not properly logged on to the server. Make sure the information on the **Host Info** dialog of site options is correct. Common problems are spaces, case sensitive entries, or incorrect user name or password. If you are unsure whether or not you are using the correct user name and password, contact the FTP site administrator.

Most FTP sites support anonymous logins where you do not have to have an actual account on the FTP site in order to download files; the user ID is the word *Anonymous* and the password is your e-mail address. To test this, try connecting to the Ipswitch FTP site (*ftp.ipswitch.com*) using the user ID “Anonymous.”

If you *do* have to have an actual account on the FTP server, for example, a server where you place your web pages, then you will need to obtain a user ID and password from the server administrator and enter them in the host information tab.

Numerics

“530 user access denied” 61

A

autoexec.bat 49
automating file transfers 55

B

Backup Wizard 17
 adding jobs 18
 managing jobs 21
batch files 53
“Blocking call canceled” error
 59

C

command line
 suppressing messages 56
 transferring file name with
 spaces 53
command prompt 36
Compression Mode 3
“Connection refused” error 60
Copernic, desktop search 40

D

dates and times, using to find
 files and folders 47
desktop search
 options 41
 using 40
“Disk quota exceeded” error 60

E

error messages 56, 59

F

file name, using to find files 46
file names with spaces,
 transferring 53
file size, using to find files 48
“File too large to download”

 error 60
Find Utility 39

G

Google, desktop search 40

L

“Logon failure. Quitting.” 60

M

MDTM error 61
messages
 error 59
 suppressing with the
 command line 56
Microsoft Internet Explorer 5
mirroring files and folders 23
Month-Day-Time-Marking 61

N

name of file, using to find files
 46
Netscape Navigator 5

P

pre-scheduled transfers 55

Q

queuing transfer tasks 55

R

Request Properties 9

S

Scheduler Utility 13
scheduling
 backup jobs 17
 transfer tasks 13
 transfers 15, 55
Scripting Utility 35
scripts
 example 37

 writing and debugging 36
search 40
 by filename 39
 for file content 39
 local files 40
 options 41
 remote files 44
 using Copernic search 39,
 40
 using Google search 39,
 40
 using local results 43
 using remote results 45
 using Windows search 39
 utilities 39

Search Utility 39
size of file, using to find files
 48

spaces in file names
 transferring with
 command line 53
spaces in file names,
 transferring with command
 line 53

suppressing error messages,
 from the command line 56
Synchronize Utility 23
synchronizing, files and folders
 23

T

Transfer Manager 7
Transfer Manager Log
 Window 11
transferring
 local search results 43
 remote search results 45
transferring files
 scheduling 55
 using command line to
 transfer file names with
 spaces 53

U

“User access denied” 61

Utility

Backup 17

Find 39

Scheduler 13

Scripting 35

Search 39

Synchronize 23

W

wildcard characters, using to
find files and folders 46

Windows, desktop search 40

WS_FTP Backup Wizard 17

WS_FTP Find\Search Utility
39

WS_FTP Scheduler Utility 13

WS_FTP Scripting Utility 35

WS_FTP Synchronize Utility
23