



IPSWITCH
IMail Server[™]

Customizing the Web Client

A Guide for Branding

BRANDING

CUSTOMIZING WEB MESSAGING CLIENT

BRANDING OVERVIEW	2
BRANDING ISSUES	2
Install/Upgrade Concerns.....	2
Precautions.....	2
Issues	3
Internationalization.....	3
Branding Folder Structure	4
BRANDING.CONFIG FILE	5
BRANDING OVERRIDE CAPABILITIES	7
What Can Be Changed (Overrides).....	7
Images/Styles/Strings.....	7
Login Page Example	8
BRANDING WEB MESSAGE LITE.....	9
Quick and Easy Customization	9
Advanced Customization	10

Branding Overview

There are many customers' including ISP's that require the ability to customize their installation of the Web Client system so that it will display their company logos, colors, text, etc. We have added the ability to do this by supplying style sheet changes and string changes to a single configuration file. This configuration file can be placed in a folder that will be the default overrides for all domains, or there can be a separate configuration created for each domain.

While not all attributes can be overridden, you should be able to override all of the necessary attributes that will allow the Web Client to portray your company's "look and feel".

The "**branding.example**" folder and contents, once renamed to "**branding**" will remain untouched and will not be overwritten when upgrading or repairing.



Note: It is recommended to backup and save this folder to a safe location should hardware failure cause loss of data.

Branding Issues

Install/Upgrade Concerns

The primary goal in allowing the customization of the Web Client system is the ability to preserve changes when the product is upgraded. Therefore, all customizations are performed in a separate file folder that will not be touched when reinstalling or upgrading the Ipswitch IMail products.

Precautions




Be Careful!

The implementation of the branding feature allows the end user to override any of the defined styles in the Cypress.css style sheet file. This means that it is both powerful and dangerous. Be very careful when defining overrides in the branding.config file because changes you make could cause the web pages to not display correctly.

Issues

- **Browser Support.** Different browsers react differently to modifications. Although simple changes to background images and colors should be safe, other changes like width, height, events, etc. may cause unwanted results in some browsers.
- **Image Size.** We recommend that all images you replace be kept at the same width and height as the original image supplied by Ipswitch. If you wish to change an image's dimensions, check its original definition in the Cypress.css file to see if width and height are defined. Change the new image's dimensions accordingly.

 **Caution:** All file modifications outside of the Branding folder will be overwritten during a software upgrade or repair. Make a copy of all files that are modified and keep in a safe location outside the Ipswitch directory.

- **Image Location.** When locating and naming your replacement images, do not use the same name and location as the original IMail images, or they will be overwritten during the next software repair/upgrade.

Internationalization

- **Images.** All of the changed items will be used, regardless of which language you select. This may be a problem if you place text on images and your users use multiple languages.
- **Strings.** If you change text strings, users will see the text that you override in the language used in the override. For example, if you have some users selecting French and some selecting English, your French users will see English text if you choose an English override.

Branding Folder Structure

Default Folder

The install creates the branding folder used to customize your Web Client. It includes a file named `branding.config.sample` that can be used as a reference, and is located in the virtual directory root. The default location for the branding folder is:

`C:\Program Files\Ipswitch\IMail\WebDir\WebClient\Branding.Example`

Branding Activation

- Rename the "**Branding.Example**" folder to "**Branding**".
- Rename "**Branding.config.sample**" to "**branding.config**".



Note: IMail is designed to use this folder to override IMail's default branding.

- This will activate branding for the primary domain.

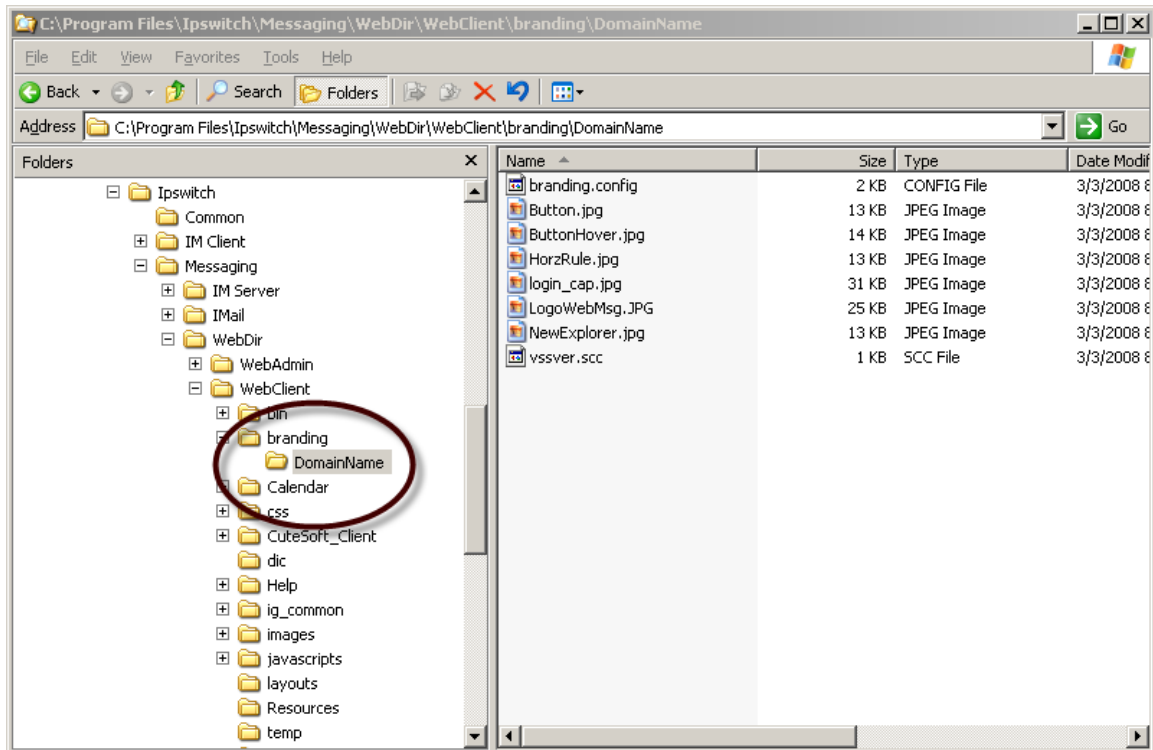
Branding Activation for all Non-Primary Domains

To customize all non-primary domains the following steps are required:

- Create a folder within the "Branding" folder with your domain name (`..branding/DomainName`).
- Create a `branding.config` file in the folder located inside the `..branding/DomainName` folder.



Note: The name of this folder should be the domain name; do not include "www." or any port information in the folder name, as in the following example.



Branding.Config File

The source for branding your Web Client installation is the branding.config file that you create, using branding.config.sample as your starting point. As mentioned earlier, this branding.config file is located in either the branding folder or the branding/domain folder, or both. The copy in the domain folder will override the one in the branding folder.

The branding.config file is a simple XML file with key/value or string/value pairs. The key/value pairs are used to override any of the styles listed in the WebDir\WebClient\Cypress.css file. The string/value pairs are used to override any string in the string resource.dll. See the following section for the details of each override type.

 **Note:** Changes made to the branding.config file take effect when the browser is restarted.

The following is the content of a sample branding.config file:

```
<?xml version="1.0" encoding="utf-8" standalone="yes"?>
<brandElements>
  <add key="login.aspx" value=".LoginTable{background-image:
url (branding/login_cap.jpg) }" />
  <add key="toolbar.aspx" value=".ToolbarMainImg{background-
image:url (branding/LogoWebMsg.jpg) ;width:296px;height:49px
}"/>
  <add key="toolbar.aspx"
value=".ToolbarHeaderStretch{background-
image:url (branding/horzrule.jpg) }"/>
  <add key="folderlist.aspx"
value=".folderListTab{background:url (branding/NewExplorer.jpg)
}"/>
  <add key="folderlist.aspx" value=".FLGroupButton{background-
image:url (branding/button.jpg) }"/>
  <add key="folderlist.aspx"
value=".FLGroupButtonHover{background-
image:url (branding/buttonhover.jpg) }"/>
  <add key="all"
value=".ButtonBar{background:url (branding/button.jpg) }"/>
  <add key="all"
value=".ButtonBarHover{background:url (branding/buttonhover.jpg
)}"/>
  <add key="all"
value=".ButtonBarRight{background:url (branding/button.jpg) }"/>
  <add key="all"
value=".ButtonBarRightHover{background:url (branding/buttonhove
r.jpg) }"/>
  <add key="all"
value=".outlookTitleCellwithBorder{background-
image:url (branding/button.jpg) }"/>
  <add key="all"
value=".outlookTitleCellwithoutBorder{background-
image:url (branding/button.jpg) }"/>
```

```
<add key="all" value=".outlookTitleCell{background-  
image:url (branding/button.jpg) }"/>  
  
<add key="all" value=".shadetabs li a{text-decoration:  
none;z-index: 1;padding: 3px 7px;margin-right: 3px;border: 1px  
solid #778;color: #000000;background: white  
url (branding/Button.jpg) top left repeat-x;}"/>  
  
<add key="composemsg.aspx"  
value=".ComposeOptionsDiv{background-color:#D2A997;}"/>  
  
<add key="all" value=".PopupBG{background-color:#D2A997;}"/>  
  
<add key="all" value=".ButtonBarBG{BACKGROUND:  
url (branding/button.jpg) ;}"/>  
  
<add string="WelcomeMessage" value="Welcome to My Web  
Hosting"/>  
  
<add string="MainTitle" value="My Web Hosting"/>  
</brandElements>
```

Branding Override Capabilities

What Can Be Changed (Overrides)

Without making changes to the html (aspx), you should be able to customize everything you need to brand the Web Client to your liking. The following sections describe what can be customized and how to go about doing it.

Images/Styles/Strings

- **Not all images can be changed** without directly modifying the images in the images folder (in the IMail\Webdir\Webclient\Images). If you do decide to modify these files, they will be replaced during the next software upgrade or repair.
- **Images you can change** are those referenced in the Cypress.css style sheet (in the IMail\Webdir\Webclient folder). For a complete listing, open the Cypress.css file in an editor and search for the "images" folder name. You should be able to determine which images are being referenced as a style instead of an IMG tag. You can only override images that are included as an attribute of a style. IMG tags cannot be overridden.

Login Page Example

One of the easiest images to override is the Login page background image -- easiest because size is not critical here. The image just needs to be large enough to hold the controls that are used to logon. The following is the line in the branding.config file for the login.aspx page:

```
<add key="login.aspx" value=".LoginTable{backgroundimage: url (branding/login_cap.jpg)}" />
```

If you locate this line in the Cypress.css file, it looks like this:

```
.LoginTable{width: 448;background-image: url ( images/ LoginBg.jpg) ; background-repeat:no-repeat;}
```

Notice that the override in the branding.config file does not include all of the attributes that are in the Cypress.css file. You only need to provide the attributes that are to be changed. In this case, if you do change the width of the image, you should include the width attribute in the branding.config file as well.

Main Toolbar Example

The following is the line in the branding.config file for the toolbar.aspx page. The LogoWebMsg.jpg image displays at the top left of the Main page, after you have logged in. By default, it reads: "Ipswitch Web Messaging"

```
<add key="toolbar.aspx" value=".ToolbarMainImg{background-image:url (branding/LogoWebMsg.jpg) ;width:296px;height:49px }"/>
```

Globally Changing Styles

An example of a style that appears in numerous pages is the ButtonBar style. To change the ButtonBar styles, specify "all" as the key and that style applies to all pages in the system.

Background color is another popular style to change. In the branding.config.sample file, there is a line for changing the background color on the Compose page and some of the other popup pages:

```
<add key="all" value=".PopupBG{background-color: #D2A997;} />
```

Overriding Strings

Strings can be difficult to override because you need to find the correct string name from the resource DLL. However, once found, all you need to do is supply the string name and a new value for it. You need a resource editor or viewer to get at the value in

DLLs. The DLLs are located at `..WebClient\bin\languagefolder` in the virtual directory where `languagefolder` is the language-country combination.

String Override Examples

- **WelcomeMessage:** This is the title on the user's home page. This title displays at the top of the page when the user clicks the Email node on the folder tree. The default value is "Ipswitch Web Messaging."
- **MainTitle:** This is the title on the browser window title bar.
- **lblLoggedIn:** This is the text at the top of the screen with the default value of "Logged in as:" The entire xml entry for this would be:

```
<add string="lblLoggedIn" value="Current User:"/>
```

Branding Web Message Lite

Quick and Easy Customization

Overriding "Web Messaging Lite" the default logo

The default logo is displayed at the top of all Web Messaging Lite pages. The following steps include changing this text or adding a custom logo.

1. Locate the following file "LogoLite.ascx" under `..\IMail\WebDir\WebClient`.
2. Using notepad open `LogoLite.ascx` and locate the following line:

```
<h1 id="logo">Web Messaging Lite</h1>
```
3. Modify this text as needed
4. The following tag example can replace the above header tag with a logo.

```

```



Note: Keep in mind that this template was designed to be lite, and images take much longer to load than text.

Advanced Customization

Changing the colors and layout

The layout and colors of the Web Messaging Lite template are maintained with a html stylesheet. This file is named "**WebClientLite.css**" and can be found in the directory:

c:\Program Files\Ipswitch\IMail\WebDir\WebClient\css

Altering this stylesheet can give any look and feel desired to customize the web messaging lite template.

Example:

To change font color, size or type, modify the file "**WebClientLite.css**" as shown below.

Changing the color value from "**#6495ED**" to "**#FF0000**" would change the text to a bright red color, and changing "**georgia**" to "**times**" would make the header text appear in a Times font. Other more advanced changes can also be made depending on your knowledge of html stylesheets.

```
#header h1#logo
{
    position: absolute;
    font: bold 2em georgia, Verdana, Arial, Sans-Serif;
    margin: 0;
    padding:0;
    color: #6495ED;
    letter-spacing: -2px;
    border: none;
    top: 0;
    left: 2px;
}
```