



# Getting Started with WhatsVirtual

IPSWITCH

**CHAPTER 1 Welcome**

Welcome to Ipswitch WhatsVirtual ..... 1

**CHAPTER 2 Using WhatsVirtual**

STEP 1: Purchase and enable the WhatsVirtual license..... 2  
STEP 2: Create Credentials and Perform Discovery ..... 2  
STEP 3: Manage and monitor virtual devices ..... 3  
STEP 4: View the WhatsVirtual maps..... 4  
STEP 5: View the WhatsVirtual reports ..... 6

**CHAPTER 3 More Information**

For more information and updates..... 8  
Copyright notice ..... 9

---

## CHAPTER 1

# Welcome

### In This Chapter

Welcome to Ipswitch WhatsVirtual .....1

## Welcome to Ipswitch WhatsVirtual

As an integrated plug-in for WhatsUp Gold, Ipswitch WhatsVirtual provides the capability to discover, map, monitor, alert and report on both small virtual environments, hosted by a single VMware host, or entire data centers, managed by one or more VMware vCenter servers.

When you use a vCenter server to manage your virtual environment, it becomes the point of communication between WhatsVirtual and the virtual machines within that environment. WhatsVirtual communicates with the vCenter server to discover the virtual environment, poll the virtual machines, collect events associated with actions taken on virtual machines, and issue actions to individual virtual machines.

---

## CHAPTER 2

# Using WhatsVirtual

### In This Chapter

STEP 1: Purchase and enable the WhatsVirtual license .....	2
STEP 2: Create Credentials and Perform Discovery .....	2
STEP 3: Manage and monitor virtual devices .....	3
STEP 4: View the WhatsVirtual maps .....	3
STEP 5: View the WhatsVirtual reports.....	6

## STEP 1: Purchase and enable the WhatsVirtual license

The files for WhatsVirtual plug-in are installed automatically with Ipswitch WhatsUp Gold. Your license file determines whether or not you can access the WhatsVirtual plug-in.

To update your license with a purchased WhatsVirtual plug-in, visit the *MyIpswitch portal* (<http://www.myipswitch.com>).

## STEP 2: Create Credentials and Perform Discovery

Perform these tasks to configure WhatsUp Gold and WhatsVirtual to discover your virtual environment:

- Edit the Device Role settings as necessary to meet your operational requirements.
- Set the scan type to **VMware Scan**, and enter the vCenter server or VMware hosts you want to discover.



**Note:** Ensure that VMware Tools are installed on each virtual machine you want to discover. If VMware tools are not installed on a virtual machine, the device will not be discovered during the VMware Scan.

- Create VMware credentials for each vCenter server or VMware host you want to discover.



**Note:** If you are managing your virtual environment using a vCenter server and want to collect detailed hardware information about the VMware hosts within that environment, you must add and select the credentials for those VMware hosts as well as for the vCenter server.

- Configure the Discovery Console to use the VMware credentials.
- Set the Scan Advanced Settings so that WhatsUp Gold automatically scans the virtual machines associated with each discovered host.
- Run the VMware discovery scan and view your output.

## STEP 3: Manage and monitor virtual devices

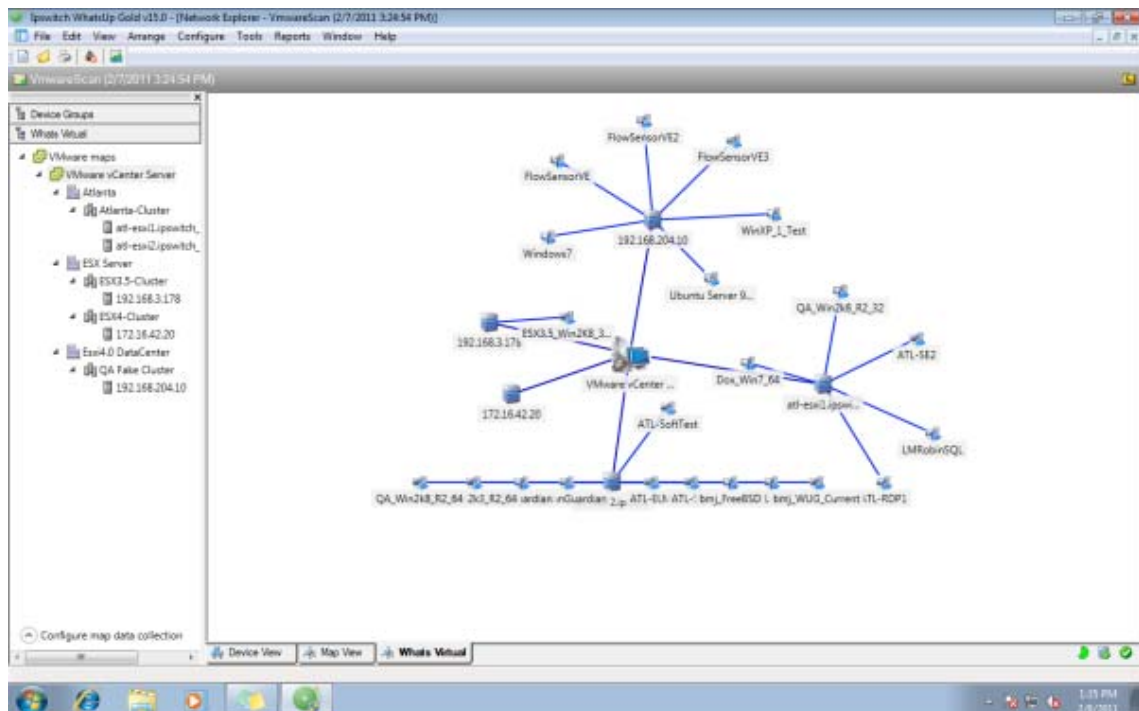
Using WhatsVirtual, WhatsUp Gold manages virtual devices similarly to physical devices; you can add performance monitors, active monitors, and passive monitors; set thresholds in the Alert Center and create alerts associated with these thresholds; create customized actions and create action policies that invoke these actions; and collect and view events created by the vCenter server in response to actions taken in support of vMotion, High Availability (HA) and virtual machine security.

While much of the management and monitoring of virtual devices is the same as physical devices, areas where there are differences include:

- Performance monitor data gathering methods for virtual hosts
- Extended right-click menu options for virtual machines
- vCenter server event collection in support of vMotion, High Availability (HA) and virtual machine security.
- Manual addition and classification of virtual hosts and virtual machines

## STEP 4: View the WhatsVirtual maps

When you have completed your VMware discovery scan, you can see a graphical representation of your virtual environment from the WhatsVirtual tab in the WhatsUp Gold views dialog.



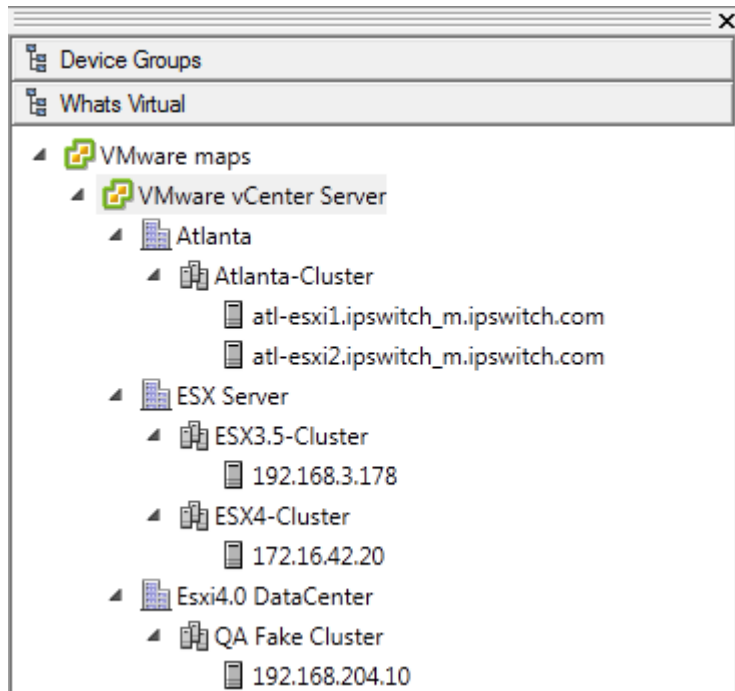
The WhatsVirtual maps are rendered from the information gathered from the vCenter server and show all reported connections between virtual machines, VMware hosts, DataCenters, and the vCenter server. Maps are generated specifically for each Cluster, DataCenter, VMware host, and vCenter server discovered during the VMware scan. Click **View > Refresh** to update the WhatsVirtual maps, so that changes to the virtual environment are reflected in the maps, such as when virtual machines are powered off, migrated or deleted. You can configure the WhatsVirtual maps to only show virtual machines that are powered on, and you can set the interval which WhatsVirtual will collect mapping data.

### To open a WhatsVirtual map:

- 1 Click on the **WhatsVirtual** tab in the WhatsUp Gold views dialog.
- 2 In the navigation pane of the WhatsUp Gold views dialog, click **WhatsVirtual**. The WhatsVirtual navigation pane appears.

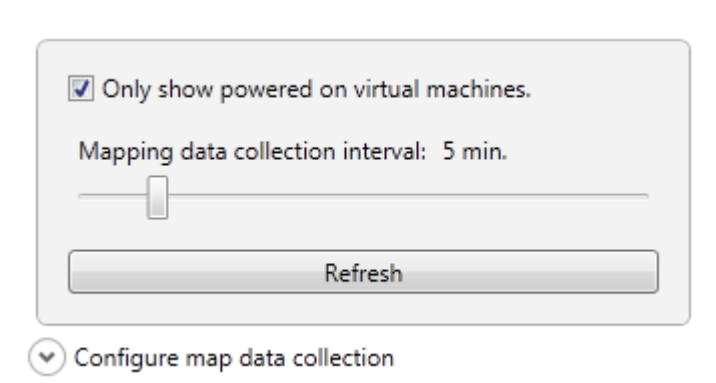


- 3 Expand the VMware maps tree and select the map you want to view.



### Configuring WhatsVirtual maps

From the map data collection configuration dialog which is located in the WhatsVirtual navigation pane, you can set the data collection interval (vCenter polling interval for each device), configure the maps to show only those virtual machines that are currently powered on, and manually refresh WhatsVirtual maps.



#### To set the data collection interval for WhatsVirtual maps:

- 1 In the WhatsVirtual navigation pane, click **Configure map data collection**. The WhatsVirtual map configuration dialog appears.
- 2 Move the slider to the right to increase the collection interval, or move the slider to the left to decrease the collection interval.



**Important:** The default data collection interval is 5 minutes. Settings lower than the default may create a higher than normal CPU usage (up to an additional 20% of available CPU) on the WhatsUp Gold server and may increase overhead on the vCenter server.

### To show only virtual machines that are powered on:

- 1 In the WhatsVirtual navigation pane, click **Configure map data collection**. The WhatsVirtual map configuration dialog appears.
- 2 Select **Only show powered on virtual machines**.

### To refresh the WhatsVirtual maps:

Click **Refresh** to refresh the WhatsVirtual maps. The maps will refresh with information gathered during the latest poll of the vCenter server.

## STEP 5: View the WhatsVirtual reports

### Dashboard reports

The following reports have been added to WhatsUp Gold to provide information about your virtual environment.

- **Virtual Server.** This home and device level dashboard report provides a list of all the virtual machines managed by a virtual server. The virtual server may be a vCenter server or VMware host.
- **Virtual Server List.** This device level dashboard report provides system attributes for the virtual server, hardware information for VMware hosts, and a list of the virtual devices managed by the virtual server. The virtual server may be a vCenter server or a VMware host.



**Note:** Hardware information will be displayed only if the selected device is a VMware host for which credentials were supplied and selected during a VMware scan.

- **WhatsVirtual Events.** This home level dashboard report displays events that WhatsVirtual is configured to collect from the vCenter server. The events appear in reverse chronological order, so that the last event received appears at the top of the list.
- **Virtual Machine Instant CPU Utilization.** This home and device level dashboard report provides the current CPU utilization for the selected virtual machine.
- **Virtual Machine Instant Disk Utilization.** This home and device level dashboard report provides the current Disk utilization for the selected virtual machine.
- **Virtual Machine Instant Memory Utilization.** This home and device level dashboard report provides the current Memory utilization for the selected virtual machine.



- **Virtual Machine Instant Interface Utilization.** This home and device level dashboard report provides the current Interface utilization for the selected virtual machine.

### Configuring VMware dashboard reports

Before you can configure a dashboard report, it must be added to your dashboard view. For information on adding dashboard reports to a dashboard view, see Adding dashboard reports to a dashboard view in the dialog help.

Configure VMware dashboard reports on the Configure Report dialog (**Menu > Configure Report**).

Click the Browse (...) button to select the device you want to use as a data source for the report.

### Full reports

**WhatsVirtual Events.** This report displays events that WhatsVirtual is configured to collect from the vCenter server. The events appear in reverse chronological order, so that the last event received appears at the top of the list.

You can access the WhatsVirtual Events report from the WhatsUp Gold web interface from the Reports Tab. (**System > WhatsVirtual Events**)

---

## CHAPTER 3

# More Information

### In This Chapter

For more information and updates.....	8
Copyright notice.....	9

## For more information and updates

Following are information resources for WhatsUp Gold. This information may be periodically updated and available on the *WhatsUp Gold web site* (<http://www.whatsupgold.com/wugtechsupport>).

- **Release Notes.** The release notes provide an overview of changes, known issues, and bug fixes for the current release. The notes also contain instructions for installing, upgrading, and configuring WhatsUp Gold. The release notes are available at **Start > Programs > Ipswitch WhatsUp Gold > Release Notes** or on the *WhatsUp Gold web site* (<http://www.whatsupgold.com/WUG15relnotes>).
- **Application Help for the console and web interface.** The console and web help contain dialog assistance, general configuration information, and how-to's that explain how to use the features. The Table of Contents is organized by functional area, and can be accessed from the main menu or by clicking **Help** in the console, or the **?** icon in the web interface.
- **Additional WhatsUp Gold resources.** For a listing of current and previous guides and help available for WhatsUp Gold products, see the *WhatsUp Gold web site* (<http://www.whatsupgold.com/support/guides.aspx>).
- **WhatsUp Gold optional plug-ins.** You can extend the core features of WhatsUp Gold by installing plug-ins. For information on available plug-ins and to see release notes for each plug-in, see *WhatsUp Gold plug-ins documentation* (<http://www.whatsupgold.com/support/guides.aspx>).
- **Licensing Information.** Licensing and support information is available on the *MyIpswitch licensing portal* (<http://www.myipswitch.com/>). The web portal provides enhanced web-based capabilities to view and manage Ipswitch product licenses.
- **Technical Support.** Use the WhatsUp Gold Support Site for a variety of WhatsUp Gold product help resources. From here you can view product documentation, search Knowledge Base articles, access the community site for help from other users, and get other Technical Support information. The Support Site is available on the *WhatsUp Gold web site* (<http://www.whatsupgold.com/wugtechsupport>).

## Copyright notice

©1991-2011 Ipswitch, Inc. All rights reserved.

This document, as well as the software described in it, is furnished under license and may be used or copied only in accordance with the terms of such license. Except as permitted by such license, no part of this publication may be reproduced, photocopied, stored on a retrieval system, or transmitted, in any form or by any means, electronic, mechanical, recording, or otherwise, without the expressed prior written consent of Ipswitch, Inc.

The content of this document is furnished for informational use only, is subject to change without notice, and should not be construed as a commitment by Ipswitch, Inc. While every effort has been made to assure the accuracy of the information contained herein, Ipswitch, Inc. assumes no responsibility for errors or omissions. Ipswitch, Inc., also assumes no liability for damages resulting from the use of the information contained in this document.

IMail, the IMail logo, WhatsUp, the WhatsUp Gold logo, WS\_FTP, the WS\_FTP logos, Ipswitch, and the Ipswitch logo are trademarks of Ipswitch, Inc. Other products and their brands or company names, are or may be trademarks or registered trademarks, and are the property of their respective companies.

This document was published on Tuesday, May 31, 2011 at 16:15.