



IPSWITCH
WhatsUp Gold
v14.2

Getting Started with WhatsConfigured



IPSWITCH

CHAPTER 1 Welcome

Welcome to WhatsConfigured.....	1
---------------------------------	---

CHAPTER 2 Deploying WhatsConfigured

STEP 1: Purchase and enable the WhatsConfigured license	2
STEP 2: Configure and assign credentials	3
STEP 3: Configure task scripts and tasks	4
Assign tasks to the appropriate devices	5
Configure Alert Center task thresholds	6
STEP 4: Configure and audit policies	6
STEP 5: Manage network devices	7
STEP 6: View WhatsConfigured data.....	8
View and compare configuration data.....	9
View task data.....	9

CHAPTER 3 More information

For more information and updates.....	11
---------------------------------------	----

CHAPTER 1

Welcome

In This Chapter

Welcome to WhatsConfigured 1

Welcome to WhatsConfigured

WhatsConfigured enables effective management of one of the most critical assets on your network—device configurations. As a fully integrated plug-in for WhatsUp Gold, WhatsConfigured automates the key configuration and change management tasks required to maintain and control configuration files for networking devices, reducing the risk of network outages caused by misconfigured devices. Network managers can leverage this automated configuration to reduce the amount of time spent ensuring their network devices are configured correctly, freeing valuable time.

WhatsConfigured is built around an automated task execution engine that allows network managers to dynamically gather configuration data about their network devices through configuration tasks. These configuration tasks can be scheduled to run on a regular basis or can be manually ran as needed to upload, download, and backup configuration files, manage device credentials, and much more. WhatsConfigured comes with several pre-defined configuration tasks with the option to create custom tasks. Additionally, WhatsConfigured works with the WhatsUp Gold Alert Center and can alert you on the success or failure of a task, or when changes are detected on a device.

With support for heterogeneous networks, WhatsConfigured provides secure SNMP, SSH, Telnet or TFTP access, to download and store device configuration files in a secure repository, keeping them readily available for file compares and restoration on a device.

WhatsConfigured not only reduces the time and effort required to maintain device configurations and changes while providing increased security, compliance, and visibility, it also reduces the risk of costly network downtime.

CHAPTER 2

Deploying WhatsConfigured

In This Chapter

STEP 1: Purchase and enable the WhatsConfigured license	2
STEP 2: Configure and assign credentials	3
STEP 3: Configure task scripts and tasks.....	4
STEP 4: Configure and audit policies	6
STEP 5: Manage network devices.....	7
STEP 6: View WhatsConfigured data.....	8

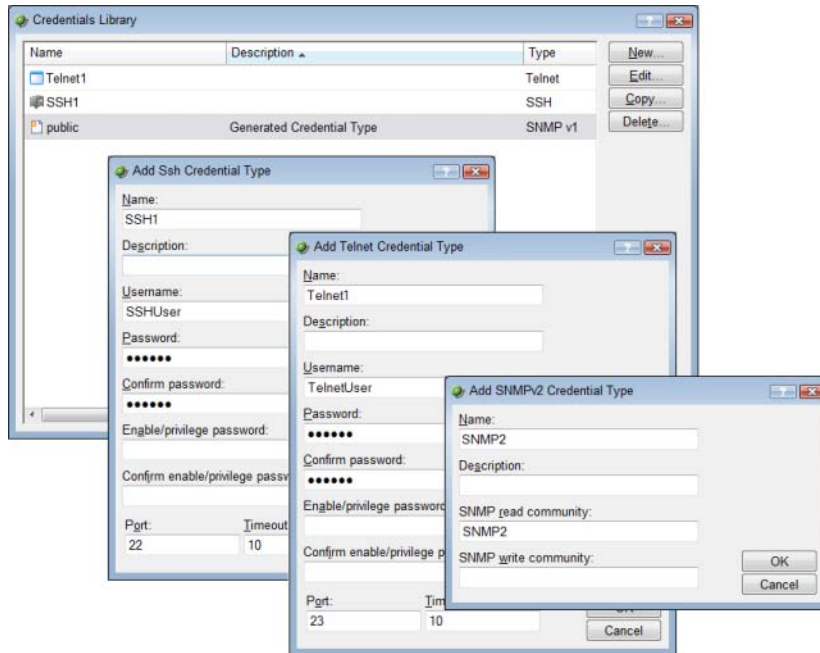
STEP 1: Purchase and enable the WhatsConfigured license

The files for WhatsConfigured plug-in are installed automatically with Ipswitch WhatsUp Gold. Your license file determines whether or not you can access the WhatsConfigured plug-in, and how many devices you can assign to a WhatsConfigured task.

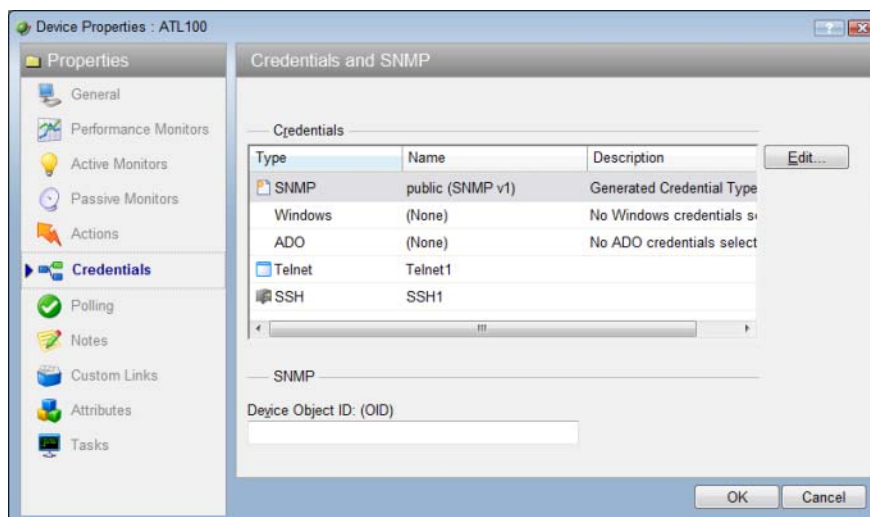
To update your license with a purchased WhatsConfigured plug-in, or to increase your device-per-task count, visit the *MyIpswitch portal* (<http://www.myipswitch.com>).

STEP 2: Configure and assign credentials

WhatsConfigured uses SSH and Telnet credentials to communicate with the devices on your network. You need to assign appropriate credentials to every device that you plan to manage through WhatsConfigured.



Credentials are configured in the WhatsUp Gold Credentials Library, and are assigned to devices from the Device Properties - Credentials dialog.

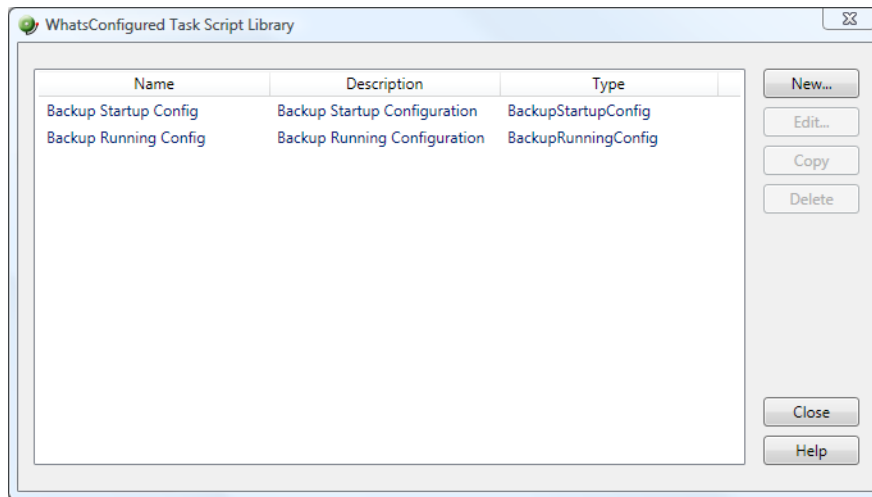


STEP 3: Configure task scripts and tasks

Task scripts login to devices through SSH or Telnet, and run command-line interface (CLI) commands on devices. These tasks can perform a number of operations, such as restoring or backing up a running or startup configuration, or changing an application password.

WhatsConfigured comes with several pre-configured task scripts; you can also configure your own custom task scripts using the WhatsConfigured Custom Script Language.

Task scripts are configured from and stored in the Task Script Library and associated to WhatsConfigured tasks in the WhatsConfigured Task dialog.



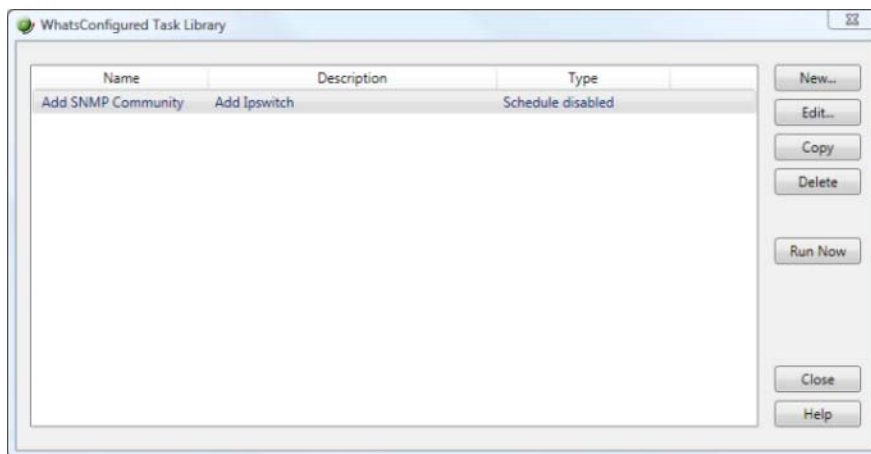
For more information, see the *Using Task Scripts* section in the WhatsConfigured Help.

Task scripts are powered by user-configured *tasks*. When you configure a WhatsConfigured task, you select the specific task script that you want the task to execute at the time it is run.

You can configure both schedulable and password tasks. Schedulable Tasks run associated task scripts on a regularly scheduled basis. For example, you can have WhatsConfigured make a daily backup of a device's running configuration. Password Tasks modify credentials on the devices to which they are assigned. For example, removing a set of SNMPv1 credentials from a device.

Getting Started with WhatsConfigured

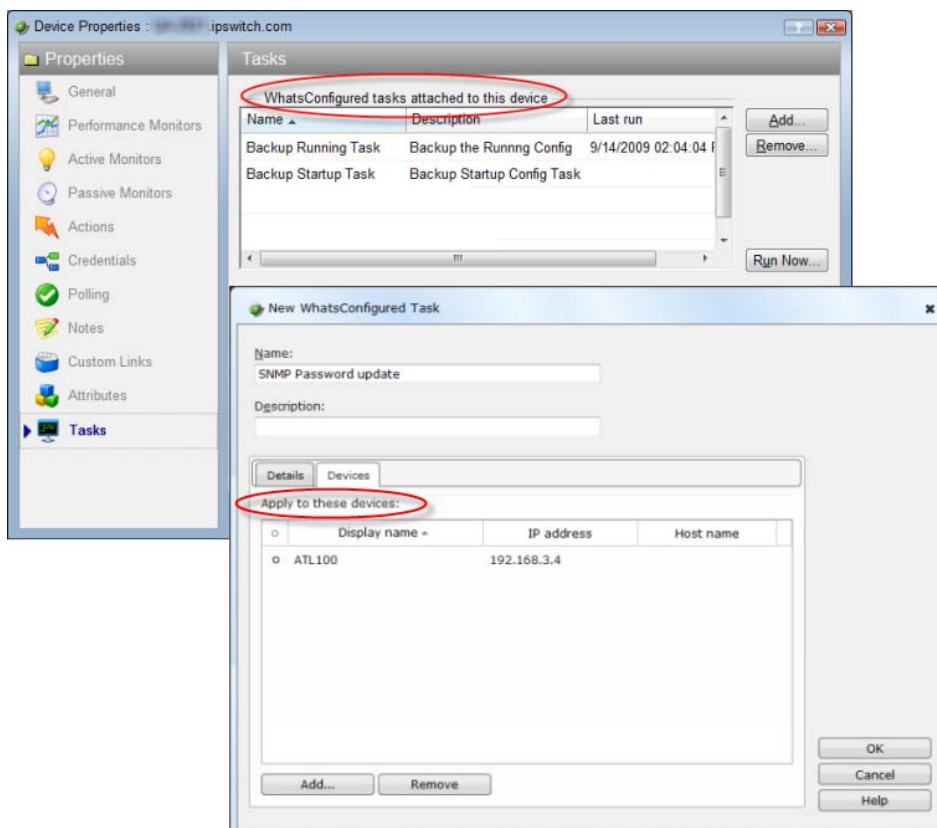
Tasks are configured from and stored in the WhatsConfigured Task Library and are associated with devices in the WhatsConfigured Task dialog. Additionally, you can view tasks associated with a specific device from the Device Properties - Tasks dialog.



For more information, see the *Using Tasks* section in the WhatsConfigured Help.

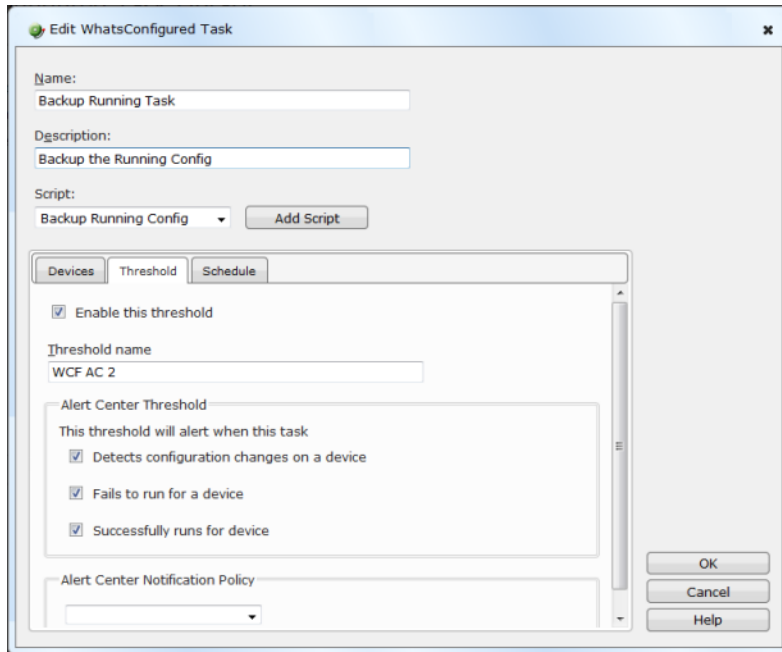
Assign tasks to the appropriate devices

A task must be assigned to a device in order to execute the selected task script. Tasks can either be assigned during the initial task configuration process via the New/Edit WhatsConfigured Task dialog, or from the Device Properties - Tasks dialog.



Configure Alert Center task thresholds

As you configure WhatsConfigured tasks, you have the opportunity to assign Alert Center thresholds through which you can receive task threshold alerts. This can be done on the *Threshold* tab of the New/Edit WhatsConfigured Task dialog.



You have the option to associate an Alert Center Notification Policy with the threshold to email you on the success or failure of the task, or when changes are detected.

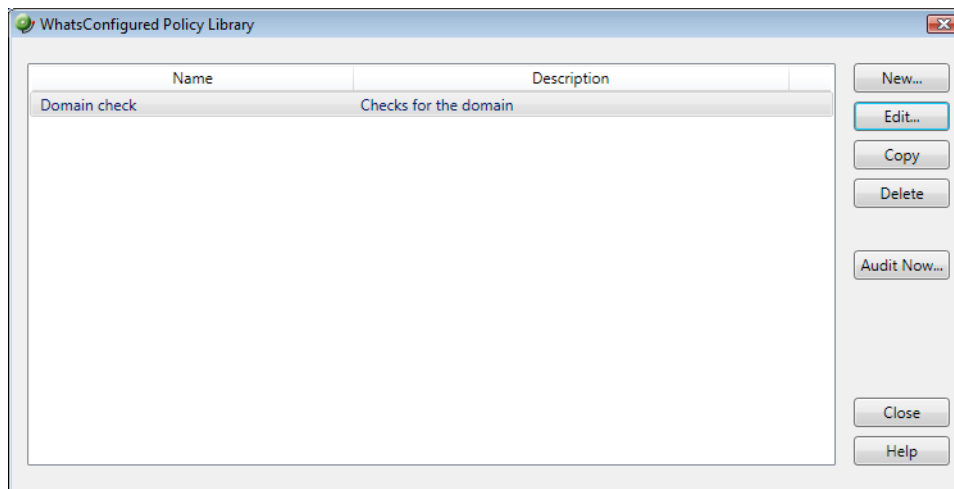
STEP 4: Configure and audit policies

WhatsConfigured policies search through archived configuration files for strings that are either expected or not expected within the file(s).

Policies can be added to Alert Center Task Threshold's. When a schedulable task fails a policy, any associated notification policies alert you that the policy has failed due to unexpected content that has been flagged in an archived config file.

Getting Started with WhatsConfigured

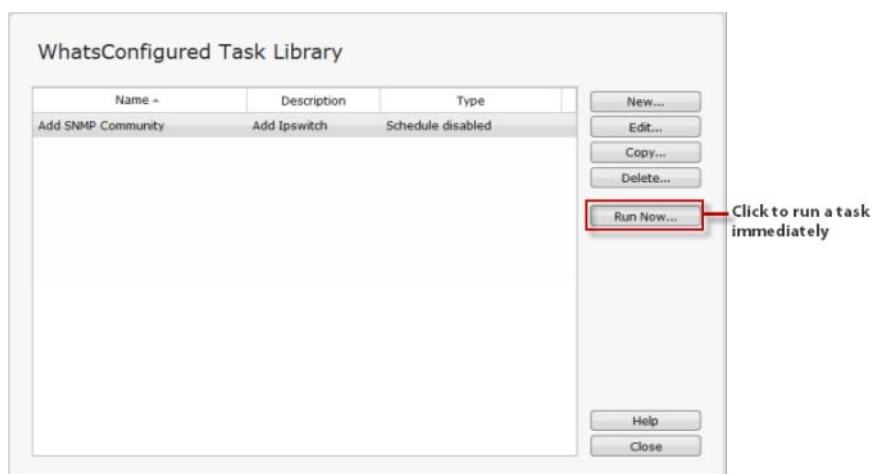
Policies are configured from and stored in the Policy Library. From the Policy Library, you can also run policies immediately for a specific Archive Key using the **Audit Now** option.



For more information, see the *Using Policies* section in the WhatsConfigured Help.

STEP 5: Manage network devices

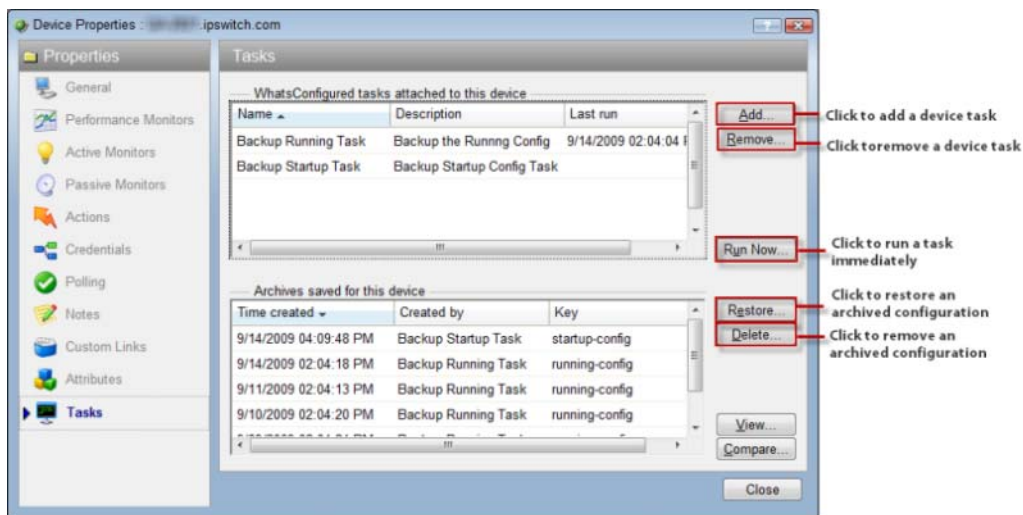
After tasks are configured and assigned, they either run on the schedule you configure, or can be run as needed from the WhatsConfigured Task Library and the Device Properties - Tasks dialog.



Note: If you run the task from Device Properties the task only runs for that specific device. If you run the task from the Task Library, the task runs for any device to which it is assigned.

Getting Started with WhatsConfigured

In addition to running tasks on demand, the Device Properties - Tasks dialog allows you add or remove device tasks, restore a device to a previously archived configuration file, or delete an archived configuration.

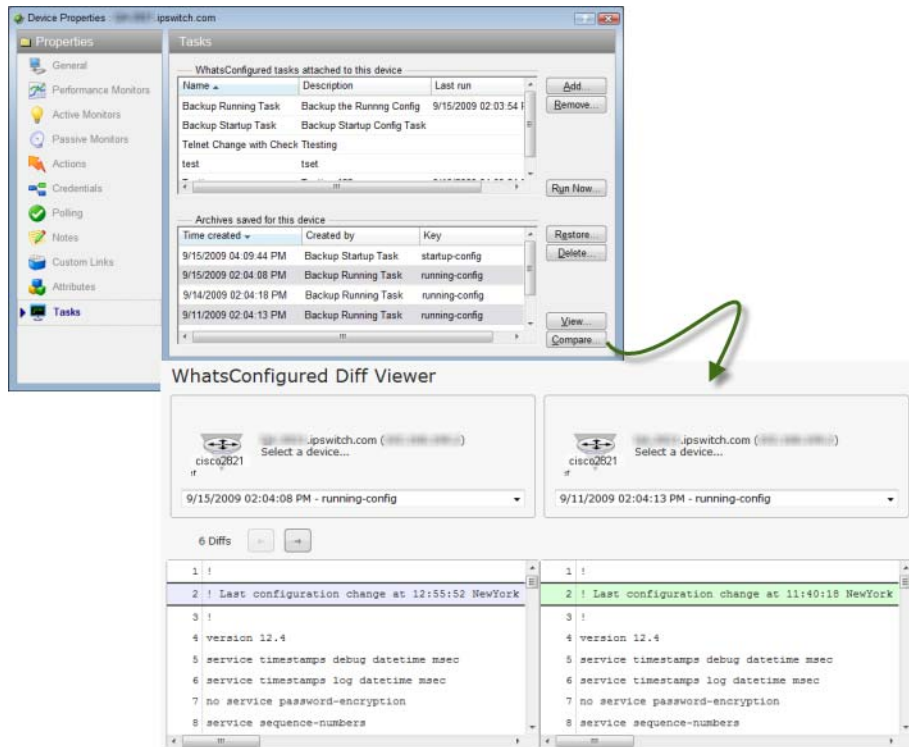


STEP 6: View WhatsConfigured data

As WhatsConfigured runs tasks, it stores data in the WhatsUp Gold database. You can view this task and configuration data from several places in WhatsUp Gold, including the Device Properties - Tasks dialog, the WhatsConfigured Task Log report, and the Alert Center tab.

View and compare configuration data

Device configuration data can be viewed from the Device Properties - Tasks dialog. From here you can view a single archived configuration, or compare two configuration files side-by-side via the WhatsConfigured Diff Viewer.

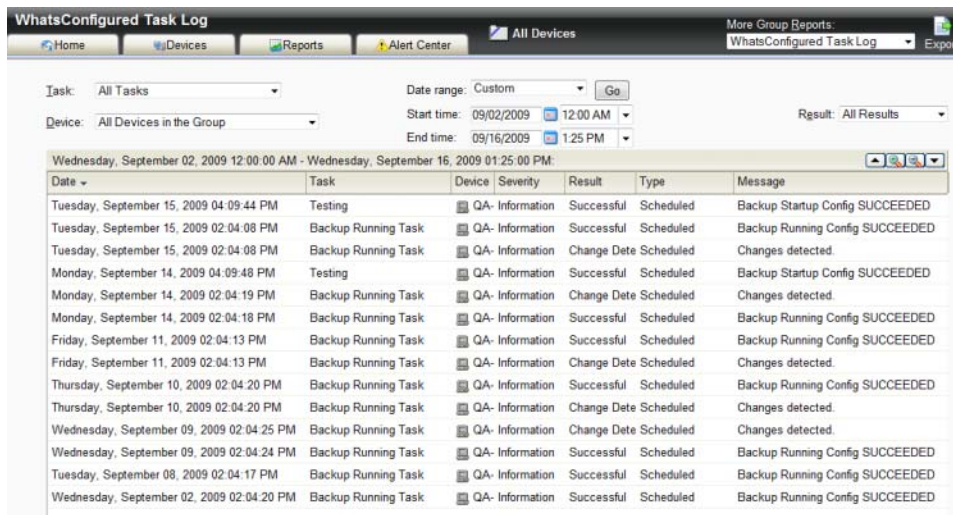


View task data

Task data can be viewed from the WhatsConfigured Task Log and on the WhatsUp Gold Alert Center tab.

Getting Started with WhatsConfigured

The WhatsConfigured Task Log displays log messages generated by WhatsConfigured tasks. You can filter the report to display only data pertaining to a specific task result, a specific task, specific device, and by date the task occurred.



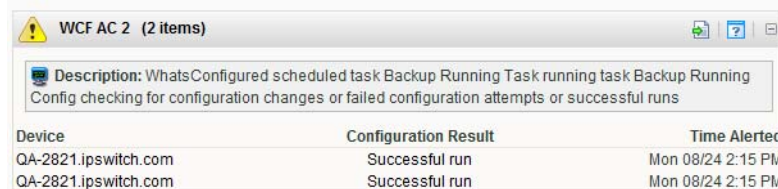
WhatsConfigured Task Log

Task: All Tasks Date range: Custom Go

Device: All Devices in the Group Start time: 09/02/2009 12:00 AM End time: 09/16/2009 1:25 PM Result: All Results

Date	Task	Device	Severity	Result	Type	Message
Tuesday, September 15, 2009 04:09:44 PM	Testing	QA- Information	Successful	Scheduled	Backup Startup Config SUCCEEDED	
Tuesday, September 15, 2009 02:04:08 PM	Backup Running Task	QA- Information	Successful	Scheduled	Backup Running Config SUCCEEDED	
Tuesday, September 15, 2009 02:04:08 PM	Backup Running Task	QA- Information	Change Dete	Scheduled	Changes detected.	
Monday, September 14, 2009 04:09:48 PM	Testing	QA- Information	Successful	Scheduled	Backup Startup Config SUCCEEDED	
Monday, September 14, 2009 02:04:19 PM	Backup Running Task	QA- Information	Change Dete	Scheduled	Changes detected.	
Monday, September 14, 2009 02:04:18 PM	Backup Running Task	QA- Information	Successful	Scheduled	Backup Running Config SUCCEEDED	
Friday, September 11, 2009 02:04:13 PM	Backup Running Task	QA- Information	Successful	Scheduled	Backup Running Config SUCCEEDED	
Friday, September 11, 2009 02:04:13 PM	Backup Running Task	QA- Information	Change Dete	Scheduled	Changes detected.	
Thursday, September 10, 2009 02:04:20 PM	Backup Running Task	QA- Information	Successful	Scheduled	Backup Running Config SUCCEEDED	
Thursday, September 10, 2009 02:04:20 PM	Backup Running Task	QA- Information	Change Dete	Scheduled	Changes detected.	
Wednesday, September 09, 2009 02:04:25 PM	Backup Running Task	QA- Information	Change Dete	Scheduled	Changes detected.	
Wednesday, September 09, 2009 02:04:24 PM	Backup Running Task	QA- Information	Successful	Scheduled	Backup Running Config SUCCEEDED	
Tuesday, September 08, 2009 02:04:17 PM	Backup Running Task	QA- Information	Successful	Scheduled	Backup Running Config SUCCEEDED	
Wednesday, September 02, 2009 02:04:20 PM	Backup Running Task	QA- Information	Successful	Scheduled	Backup Running Config SUCCEEDED	

After you have assigned a threshold to a task, a custom threshold workspace report for the task threshold is displayed on the Alert Center tab. This report displays data about the devices for which the task is configured, the result of the task, and the time at which Alert Center was alerted on the task result.



WCF AC 2 (2 items)

Description: WhatsConfigured scheduled task Backup Running Task running task Backup Running Config checking for configuration changes or failed configuration attempts or successful runs

Device	Configuration Result	Time Alerted
QA-2821.ipswitch.com	Successful run	Mon 08/24 2:15 PM
QA-2821.ipswitch.com	Successful run	Mon 08/24 2:15 PM



Tip: You can click a **Configuration Result** to view the WhatsConfigured Task Log for more detailed information about the report entry.

CHAPTER 3

More information

In This Chapter

For more information and updates.....	11
Copyright notice	12

For more information and updates

Following are information resources for WhatsUp Gold. This information may be periodically updated and available on the *WhatsUp Gold web site* (<http://www.whatsupgold.com/support/index.aspx>).

- 1 Release Notes.** The release notes provide an overview of changes, known issues, and bug fixes for the current release. The notes also contain instructions for installing, upgrading, and configuring WhatsUp Gold. The release notes are available at **Start > Programs > Ipswitch WhatsUp Gold > Release Notes** or on the *WhatsUp Gold web site* (<http://www.whatsupgold.com/wugteslarelnotes>).
- 2 Application Help for the console and web interface.** The console and web help contain dialog assistance, general configuration information, and how-to's that explain how to use the features. The Table of Contents is organized by functional area, and can be accessed from the main menu or by clicking **Help** in the console, or the **?** icon in the web interface.
- 3 Additional WhatsUp Gold guides.** For a listing of current and previous guides and help files available for WhatsUp Gold's multiple versions, see the *WhatsUp Gold web site* (<http://www.whatsupgold.com/wug14guides>).
- 4 WhatsUp Gold optional plug-ins.** You can extend the core features of WhatsUp Gold by installing plug-ins. For information on available plug-ins and to see release notes for each plug-in, see *WhatsUp Gold plug-ins documentation* (<http://www.whatsupgold.com/wug14guides>).
- 5 Licensing Information.** Licensing and support information is available on the *MyIpswitch licensing portal* (<http://www.myipswitch.com/>). The web portal provides enhanced web-based capabilities to view and manage Ipswitch product licenses.
- 6 Knowledge Base.** Search the Ipswitch Knowledge Base of technical support and customer service information. The knowledge base is available on the *WhatsUp Gold web site* (<http://www.whatsupgold.com/wugTechSupport>).
- 7 Support community.** Use the WhatsUp Gold community site to interact with other WhatsUp Gold users and share helpful application information on the forums, view KBs and documentation, submit new product ideas, access the script library, and keep up with the latest news on the blog. The wugSpace support community for WhatsUp Gold is available on the *WhatsUp Gold community site* (<http://www.whatsupgold.com/wwc14forumsmore>).

Copyright notice

©1991-2010 Ipswitch, Inc. All rights reserved.

This document, as well as the software described in it, is furnished under license and may be used or copied only in accordance with the terms of such license. Except as permitted by such license, no part of this publication may be reproduced, photocopied, stored on a retrieval system, or transmitted, in any form or by any means, electronic, mechanical, recording, or otherwise, without the expressed prior written consent of Ipswitch, Inc.

The content of this document is furnished for informational use only, is subject to change without notice, and should not be construed as a commitment by Ipswitch, Inc. While every effort has been made to assure the accuracy of the information contained herein, Ipswitch, Inc. assumes no responsibility for errors or omissions. Ipswitch, Inc., also assumes no liability for damages resulting from the use of the information contained in this document.

IMail, the IMail logo, WhatsUp, the WhatsUp Gold logo, WS_FTP, the WS_FTP logos, Ipswitch, and the Ipswitch logo are trademarks of Ipswitch, Inc. Other products and their brands or company names, are or may be trademarks or registered trademarks, and are the property of their respective companies.

This document was published on Thursday, March 18, 2010 at 12:53.