



IPSWITCH

Database Migration Guide

Learn how to migrate a WhatsUp Gold database from Microsoft® SQL Server® 2005 Express Edition to Microsoft® SQL Server® 2005 or 2008 Enterprise, Standard, or Workgroup Editions.



CHAPTER 1 Migrating WhatsUp Gold to a new server

Migrating WhatsUp Gold with a local database	2
Step 1: Upgrade existing server to latest version of WhatsUp Gold	2
Step 2: Back up existing databases	3
Step 3: Disable WhatsUp Gold on existing server.....	4
Step 4: Copy installation program and database backup files to new server	4
Step 5: Install WhatsUp Gold on new server.....	4
Step 6: Restore backed-up databases over new server's default databases.....	10
Step 7: Migrate settings and files that are not stored in database	11
Step 8: Restart WhatsUp Gold services on new server.....	11
Migrating WhatsUp Gold with a remote Microsoft SQL Server database	12
Step 1: Upgrade existing server to latest version of WhatsUp Gold	12
Step 2: Disable WhatsUp Gold on existing server.....	13
Step 3: Install WhatsUp Gold on new server.....	13
Step 4: Migrate settings and files that are are not stored in database.....	16

CHAPTER 2 Migrating the WhatsUp Gold Microsoft SQL Server 2005 Express Edition database to Microsoft SQL Server

Step 1: Verify Microsoft SQL Server meets requirements.....	18
Step 2: Back up the database.....	19
Step 3: Migrate the database to Microsoft SQL Server 2005 or Microsoft SQL Server 2008	20
Step 4: Update the database connections.....	22
Troubleshooting migration issues.....	24
For more information	25

CHAPTER 1

Migrating WhatsUp Gold to a new server

In This Chapter

Migrating WhatsUp Gold with a local database 2

Migrating WhatsUp Gold with a remote Microsoft SQL Server database 12

This section explains how to migrate an installation of WhatsUp Gold from one server to another.

If you are using a local Microsoft SQL Server 2005 Express Edition, Microsoft SQL Server 2005 or Microsoft SQL Server 2008 database with WhatsUp Gold, follow the instructions for *Migrating WhatsUp Gold with a local database* (on page 2).

If you are using a remote database with WhatsUp Gold, follow the instructions for *Migrating WhatsUp Gold with a remote database* (on page 12).



Note: The procedures in this guide assume that you are using WhatsUp Gold v12.3 or later. If you are using an earlier version, we strongly recommend you upgrade prior to moving WhatsUp Gold to a new server.

Migrating WhatsUp Gold with a local database

These instructions explain how to move an installation of WhatsUp Gold that is using a local database from one server to another.



Note: These instructions are not intended for use with WhatsUp Gold MSP or Distributed Editions. For help migrating those editions, contact technical support.

Step 1: Upgrade existing server to latest version of WhatsUp Gold

To successfully migrate WhatsUp Gold from one server to another, the versions of WhatsUp Gold on both servers must match exactly. We strongly recommend upgrading to the latest version of WhatsUp Gold, which is available to active service agreement holders on the Mylpswitch customer portal. If you are not an active service agreement holder, you can renew your service agreement in the Mylpswitch customer portal.

To download the latest version of WhatsUp Gold:

- 1 Go to the *MyIpswitch.com* customer portal (<http://www.myipswitch.com/>).
- 2 If you do not have an account, click **Sign up now** and create a new account.
- or -
If you have an account, enter your email address and password to access your MyIpswitch account.
- 3 Select the **My Downloads** tab. The My Downloads page appears.
- 4 In the **Network Management** section, locate the latest version of WhatsUp Gold that is available to you. If this version is newer than the currently installed version of WhatsUp Gold, click **Download**. The file begins downloading.

After the download completes, launch the installation program to upgrade. Follow the on-screen instructions to complete the installation.



Tip: Additional installation instructions are available in the Release Notes, which are available from the first screen of the installation program.

Step 2: Back up existing databases

To move the data from the existing server to the new server, you must back up the databases.



Caution: Any data collected from the time you back up the databases to when you restore them on the new server will be lost. We recommend executing these steps during non-peak times, when minimal downtime can be tolerated.

To back up the databases:

- 1 Back up the WhatsUp Gold database.
 - a) From the WhatsUp Gold console, select **Tools > Database Utilities > Back Up WhatsUp SQL Database**. The Save Database As dialog appears.
 - b) Enter a name for the database backup file, such as `whatsup_backup.dat`, then click **Save**.
- 2 Back up the Flow Monitor database.
 - a) From the WhatsUp Gold console, select **Tools > Database Utilities > Back Up Flow Monitor SQL Databases > Back Up Flow Monitor Current Database**. The Save Database As dialog appears.
 - b) Enter a name for the database backup file, such as `nf_backup.dat`, then click **Save**.
- 3 Back up the Flow Monitor archive database.
 - a) From the WhatsUp Gold console, select **Tools > Database Utilities > Back Up Flow Monitor SQL Databases > Back Up Flow Monitor Archive Database**. The Save Database As dialog appears.
 - b) Enter a name for the database backup file, such as `nfarchive_backup.dat`, then click **Save**.

- 4 Close the WhatsUp Gold console.



Note: These operations may take some time depending on the size of your database.



Note: Even if you do not use the WhatsUp Gold Flow Monitor plug-in, you need to back up the Flow Monitor databases.

Step 3: Disable WhatsUp Gold on existing server

Your license provides a limited number of activations, so we recommend deactivating the license on the existing server before installing on the new server.

To deactivate the license on the existing server:

- 1 From the Windows Start menu, select **Programs > Ipswitch WhatsUp Gold > Manage WhatsUp Gold License**. The WhatsUp Gold Activation utility appears.
- 2 Select **Deactivate this license on this computer**, then click **Next**. The license is deactivated.
- 3 Click **Finish** to close the WhatsUp Gold Activation utility.

Step 4: Copy installation program and database backup files to new server

Using a network share, common FTP server, USB thumb drive, or whatever method you prefer, copy the installation program and the database backup files to the new server. We recommend storing these files in a temporary directory.

Step 5: Install WhatsUp Gold on new server

Using the installation program that you copied in step four, install WhatsUp Gold. The steps to do this vary depending on whether you are installing using Microsoft SQL Server 2005 Express Edition, Microsoft SQL Server 2005 or Microsoft SQL Server 2008.

To install WhatsUp Gold using the default Microsoft SQL Server 2005 Express Edition instance:



Important: WhatsUp Gold systems running on Microsoft Windows Vista require a reboot during the install process if .NET 3.5 (SP1) has not been installed prior to the WhatsUp Gold install.

- 1 Log in directly to Microsoft Windows using the Administrator account (if you do not have an account called Administrator, use an account that has full administrative privileges to the computer).



Caution: We do *not* recommend using Terminal Services or Remote Desktop to install WhatsUp Gold.



Note: When installing on Windows Vista, additional steps are necessary for the Task Tray application to work properly. For more information, see *Task Tray Application fails on Windows Vista* in the Help.

- 2 Start the installation program:
 - If you downloaded an electronic version of WhatsUp Gold, double-click on the downloaded file.
 - If you purchased a WhatsUp Gold CD-ROM, insert the CD-ROM into the appropriate drive. If it does not run automatically, click **Start**, select **Run**, then enter the CD path followed by `AutoRun.exe` (for example, `D:\AutoRun.exe`).
- 3 Read the Welcome screen.

Click a button next to an additional resource to view that resource.

Click **Next**. The License Agreement dialog appears.
- 4 Read the license agreement. If you accept the terms of the license agreement, select **I accept the terms of the license agreement**.
 - To print a copy of the license agreement, click **Print**. The license agreement is sent to the default printer.
 - If you do not accept the terms of the license agreement, click **Cancel** to exit the installation program.

Click **Next** to continue.
- 5 Select the install directories for Microsoft SQL Server 2005 Express Edition. The application and data files are installed in default directories. To change the locations, click **Browse** to find and select a different directory for the application files or the data files.



Important: Make sure that you have a large capacity drive selected for data storage. The data files for WhatsUp Gold can reach a maximum size of 22 GB.



Important: During the initial installation, databases are created for WhatsUp Gold Flow Monitor. These initial databases are limited in size, but are increased the first time the Flow Monitor collector initializes. If at least 16 GB of disk space are available when the collector initializes, the maximum size of the Flow Monitor databases is increased to 4 GB each (16 GB total including transaction logs). If less than 16 GB is available, the maximum size of the Flow Monitor databases is limited proportionately to the amount of free disk space. If your license includes WhatsUp Gold Flow Monitor, we strongly recommend that you verify that you have at least 16 GB of free disk space before installing.

- 6 Click **Next**. The Choose Destination Location dialog appears.
- 7 Select the installation directory for the WhatsUp Gold application files.

The default path is `C:\Program Files\Ipswitch\WhatsUp`. We recommend that you use the default path.



Tip: You can install WhatsUp Gold to a different location. To select a different location, click **Change**.

After you select the installation directory, click **Next**.



Note: If the installation program detects data from a previous installation of WhatsUp Gold, the Back up Web and Report Files dialog appears. We recommend that you select **Back up the existing Web and report files**, then click **Next**.

The Enable Web Server dialog appears.

- 8 Determine if you want to enable the WhatsUp web server.
 - To enable the WhatsUp web server, select **Yes** and enter a port. The default port is 80.



Note: You must select a port that is not already in use. If the port you enter is in use, you must enter a different port or stop the service using the entered port before you can continue installing WhatsUp Gold. If you choose to stop the service running on the port you want to use, you must disable it permanently. If you only disable it temporarily, a port conflict will occur the next time the disabled service is started.

- To use Microsoft Internet Information Services, select **No**, then see *Configuring the web server* in the Help.

After making a selection, click **Next**.



Note: If the firewall is enabled when WhatsUp Gold is installed, the port you specify is opened in the Windows Firewall. This allows other computers on the network to log on to the WhatsUp Gold Web interface.

- 9 Click **Install** to install WhatsUp Gold. The setup program installs and configures WhatsUp Gold.
- 10 When the installation completes, the InstallShield Wizard Complete dialog appears.

To see the release notes after the installation program closes, select **View WhatsUp Gold release notes and documentation**.
- 11 Click **Finish**. The setup program closes.



Note: The first time you open the WhatsUp Gold, you are prompted to run a network discovery. It is not necessary to run a discovery at this time, as all of the data collected will be overwritten by your existing database.

To install using an existing Microsoft SQL Server:



Important: WhatsUp Gold systems running on Microsoft Windows Vista require a reboot during the install process if .NET 3.5 (SP1) has not been installed prior to the WhatsUp Gold install.

- 1 Log in directly to Microsoft Windows using the Administrator account (if you do not have an account called Administrator, use an account that has full administrative privileges to the computer).



Caution: We do *not* recommend using Terminal Services or Remote Desktop to install WhatsUp Gold.



Note: When installing on Windows Vista, additional steps are necessary for the Task Tray application to work properly. For more information, see *Task Tray Application fails on Windows Vista* in the Help.

- 2 Start the installation program:
 - If you downloaded an electronic version of WhatsUp Gold, double-click on the downloaded file.
 - If you purchased a WhatsUp Gold CD-ROM, insert the CD-ROM into the appropriate drive. If it does not run automatically, click **Start**, select **Run**, then enter the CD path followed by `AutoRun.exe` (for example, `D:\AutoRun.exe`).
- 3 Read the Welcome screen.

Click a button next to an additional resource to view that resource.

Clear **Hide advanced installation options**. This checkbox must be cleared in order for you to use Microsoft SQL Server as the WhatsUp Gold database.

Click **Next**. The License Agreement dialog appears.
- 4 Read the license agreement. If you accept the terms of the license agreement, select **I accept the terms of the license agreement**.
 - To print a copy of the license agreement, click **Print**. The license agreement is sent to the default printer.
 - If you do not accept the terms of the license agreement, click **Cancel** to exit the installation program.

Click **Next** to continue. The Microsoft SQL Server Installation Options dialog appears.

- 5 Select **Use an existing installation of Microsoft SQL Server**, then click **Next**. The Database Server Login dialog appears.
 - a) In **Database server that you are installing to**, enter the hostname of your database server.



Important: Make sure that the "master" database for the existing SQL Server database instance that is hosting the WhatsUp database is configured to use case-insensitive collation.



Note: If you are using a database instance other than the default instance, you must include the instance name using the format <Server_Name>\<Instance_Name>.



Tip: If you cannot remember your database server's hostname, click **Browse** to see a list of all database servers detected on the domain. Database servers to which you can connect but which are not configured on the same domain as the computer where you are installing WhatsUp Gold are not shown. The Browse dialog scans your entire domain, so it may take some time before showing you a list of database servers.

- b) Select the appropriate authentication method for your database server.
 - If your database server is a member of a domain and is configured to accept Windows user names, select **Windows authentication**. The user whose credentials you use to run WhatsUp Gold must be a member of the same domain as the database server.
 - If your database server requires SQL Server authentication, or if the Windows user account under which WhatsUp Gold runs does not have access to the database server via Windows authentication, select **SQL Server authentication using Login ID and password below**, then enter the correct **Login ID** and **Password**.
 - c) Click **Next**. The installation program attempts to validate the credentials you entered and checks for the existence of WhatsUp Gold databases on the database server. If WhatsUp Gold databases are found on the database server, the setup program alerts you and asks if you want to continue.
 - Select **Yes** to upgrade the databases and continue the installation.
 - Select **No** to select another Microsoft SQL Server.

After the credentials are validated, the Enter Microsoft SQL Server 2005 Express Edition Paths dialog appears.

- 6 This dialog lists the third-party resources that the installation program installs, including Microsoft SQL Server 2005 Express Edition client tools (required for installations of WhatsUp Gold that use Microsoft SQL Server databases).

Click **Next**. The Choose Destination Location dialog appears.

- 7 Select the installation directory for the WhatsUp Gold application files.

The default path is C:\Program Files\Ipswitch\WhatsUp. We recommend that you use the default path.



Tip: You can install WhatsUp Gold to a different location. To select a different location, click **Change**.

After you select the installation directory, click **Next**.



Note: If the installation program detects data from a previous installation of WhatsUp Gold, the Back up Web and Report Files dialog appears. We recommend that you select **Back up the existing Web and report files**, then click **Next**.

The Enable Web Server dialog appears.

- 8 Determine if you want to enable the WhatsUp web server.
 - To enable the WhatsUp web server, select **Yes** and enter a port. The default port is 80.



Note: You must select a port that is not already in use. If the port you enter is in use, you must enter a different port or stop the service using the entered port before you can continue installing WhatsUp Gold. If you choose to stop the service running on the port you want to use, you must disable it permanently. If you only disable it temporarily, a port conflict will occur the next time the disabled service is started.

- To use Microsoft Internet Information Services, select **No**, then see *Configuring the web server* in the Help.

After making a selection, click **Next**.



Note: If the firewall is enabled when WhatsUp Gold is installed, the port you specify is opened in the Windows Firewall. This allows other computers on the network to log on to the WhatsUp Gold Web interface.

- 9 Click **Install** to install WhatsUp Gold. The setup program installs and configures WhatsUp Gold.
- 10 When the installation completes, the InstallShield Wizard Complete dialog appears.

To see the release notes after the installation program closes, select **View WhatsUp Gold release notes and documentation**.
- 11 Click **Finish**. The setup program closes.



Note: The first time you open the WhatsUp Gold, you are prompted to run a network discovery. It is not necessary to run a discovery at this time, as all of the data collected will be overwritten by your existing database.

Step 6: Restore backed-up databases over new server's default databases

Once WhatsUp Gold is installed using the default database, you can restore your existing database.



Note: You can only restore the database from a local drive; you cannot restore a database from a network drive.

To restore the backed-up databases over the new server's default databases:

- 1 Restore the WhatsUp Gold database.
 - a) From the WhatsUp Gold console, select **Tools > Database Utilities > Restore WhatsUp SQL Database**. The Restore Database From dialog appears.
 - b) Locate and select the database backup file that you moved from the existing WhatsUp Gold server, then click **Open**.



Note: If a dialog appears informing you that the WhatsUp service must be stopped and restarted during a database restore, click **Yes**.

- 2 Restore the NetFlow database.
 - a) From the WhatsUp Gold console, select **Tools > Database Utilities > Restore NetFlow SQL Databases > Restore NetFlow Current Database**. The Restore Database From dialog appears.
 - b) Locate and select the database backup file that you moved from the existing WhatsUp Gold server, then click **Open**.



Note: If a dialog appears informing you that the Net Flow service must be stopped and restarted during a database restore, click **Yes**.

- 3 Restore the NetFlow Archive database.
 - a) From the WhatsUp Gold console, select **Tools > Database Utilities > Restore NetFlow SQL Databases > Restore NetFlow Archive Database**. The Restore Database From dialog appears.
 - b) Locate and select the database backup file that you moved from the existing WhatsUp Gold server, then click **Open**.



Note: If a dialog appears informing you that the NetFlow service must be stopped and restarted during a database restore, click **Yes**.

Step 7: Migrate settings and files that are not stored in database

WhatsUp Gold stores some settings in the Windows Registry which must be manually re-entered on the new server.



Caution: We do not recommend exporting registry hives on the existing server to import on the new server, as some settings are custom to the specific computer. Importing the computer-specific settings from one computer into the registry of another can result in instability.



Important: Make sure that non-default port settings are set appropriately on the computer you migrate WhatsUp Gold to.

If any of the following settings were modified on the existing server, the modifications must be repeated on the new server:

- Web Server (**Configure > Program Options > Web Server**)
- Passive Monitor Listeners (**Configure > Program Options > Passive Monitor Listeners**)
- Report Data (**Configure > Program Options > Report Data**)
- Regional (**Configure > Program Options > Regional**)
- Modem port settings (available from the Beeper and Pager actions dialogs)

In addition, any settings manually configured in the registry must also be reconfigured on the new server.

Finally, copy files you have added to the `Data` subfolder of the WhatsUp Gold install directory to the same location on the new server. These files include custom sounds, MIB files, device icons, and SSL certificates.

Step 8: Restart WhatsUp Gold services on new server

We recommend restarting the server for optimal performance. If restarting the entire server is not an option, however, you can restart the following services:

- Ipswitch Alert Center
- Ipswitch Discovery
- Ipswitch Flow Collector
- Ipswitch Web Server\$WhatsUp (or IIS)
- Ipswitch WhatsUp Engine
- Ipswitch Service Control Manager

Migrating WhatsUp Gold with a remote Microsoft SQL Server database

These instructions explain how to move an installation of WhatsUp Gold that is using a remote Microsoft SQL Server 2005 or Microsoft SQL Server 2008 database from one server to another.



Note: These instructions are not intended for use with WhatsUp Gold MSP or Distributed Editions. For help migrating those editions, contact technical support.

Step 1: Upgrade existing server to latest version of WhatsUp Gold

To successfully migrate WhatsUp Gold from one server to another, the versions of WhatsUp Gold on both servers must match exactly. We strongly recommend upgrading to the latest version of WhatsUp Gold, which is available to active service agreement holders on the Mylpswitch customer portal. If you are not an active service agreement holder, you can renew your service agreement in the Mylpswitch customer portal.

To download the latest version of WhatsUp Gold:

- 1 Go to the *Mylpswitch.com* customer portal (<http://www.mylpswitch.com/>).
- 2 If you do not have an account, click **Sign up now** and create a new account.

- or -

If you have an account, enter your email address and password to access your Mylpswitch account.

- 3 Select the **My Downloads** tab. The My Downloads page appears.
- 4 In the **Network Management** section, locate the latest version of WhatsUp Gold that is available to you. If this version is newer than the currently installed version of WhatsUp Gold, click **Download**. The file begins downloading.

After the download completes, launch the installation program to upgrade. Follow the on-screen instructions to complete the installation.



Tip: Additional installation instructions are available in the Release Notes, which are available from the first screen of the installation program.

Step 2: Disable WhatsUp Gold on existing server

Your license provides a limited number of activations, so we recommend deactivating the license on the existing server before installing on the new server.

To deactivate the license on the existing server:

- 1 From the Windows Start menu, select **Programs > Ipswitch WhatsUp Gold > Manage WhatsUp Gold License**. The WhatsUp Gold Activation utility appears.
- 2 Select **Deactivate this license on this computer**, then click **Next**. The license is deactivated.
- 3 Click **Finish** to close the WhatsUp Gold Activation utility.

After you deactivate the license, you can safely uninstall WhatsUp Gold.



Warning: During the uninstall, select **Remove the WhatsUp Gold application, but leave network data I have collected intact**. Selecting any other option will delete all of the data from the WhatsUp Gold database.

To uninstall Ipswitch WhatsUp Gold with Windows XP or 2003:

- 1 Select **Start > Settings > Control Panel**, then select **Add or Remove Programs**.
- 2 Select Ipswitch WhatsUp Gold v14.
- 3 Select **Remove**.

To uninstall Ipswitch WhatsUp Gold with Windows Vista or Server 2008:

- 1 Select **Start > Settings > Control Panel**. The Control Panel dialog appears.
- 2 Under **Programs**, select **Uninstall a Program**.
- 3 Select Ipswitch WhatsUp Gold.
- 4 Select **Remove**.

You can also run the Ipswitch WhatsUp Gold installation program, then select **Remove**.

Step 3: Install WhatsUp Gold on new server



Important: WhatsUp Gold systems running on Microsoft Windows Vista require a reboot during the install process if .NET 3.5 (SP1) has not been installed prior to the WhatsUp Gold install.

- 1 Log in directly to Microsoft Windows using the Administrator account (if you do not have an account called Administrator, use an account that has full administrative privileges to the computer).



Caution: We do *not* recommend using Terminal Services or Remote Desktop to install WhatsUp Gold.



Note: When installing on Windows Vista, additional steps are necessary for the Task Tray application to work properly. For more information, see *Task Tray Application fails on Windows Vista* in the Help.

2 Start the installation program:

- If you downloaded an electronic version of WhatsUp Gold, double-click on the downloaded file.
- If you purchased a WhatsUp Gold CD-ROM, insert the CD-ROM into the appropriate drive. If it does not run automatically, click **Start**, select **Run**, then enter the CD path followed by `AutoRun.exe` (for example, `D:\AutoRun.exe`).

3 Read the Welcome screen.

Click a button next to an additional resource to view that resource.

Clear **Hide advanced installation options**. This checkbox must be cleared in order for you to use Microsoft SQL Server as the WhatsUp Gold database.

Click **Next**. The License Agreement dialog appears.

4 Read the license agreement. If you accept the terms of the license agreement, select **I accept the terms of the license agreement**.

- To print a copy of the license agreement, click **Print**. The license agreement is sent to the default printer.
- If you do not accept the terms of the license agreement, click **Cancel** to exit the installation program.

Click **Next** to continue. The Microsoft SQL Server Installation Options dialog appears.

5 Select **Use an existing installation of Microsoft SQL Server**, then click **Next**. The Database Server Login dialog appears.

- a) In **Database server that you are installing to**, enter the hostname of your database server.



Important: Make sure that the "master" database for the existing SQL Server database instance that is hosting the WhatsUp database is configured to use case-insensitive collation.



Note: If you are using a database instance other than the default instance, you must include the instance name using the format `<Server_Name>\<Instance_Name>`.



Tip: If you cannot remember your database server's hostname, click **Browse** to see a list of all database servers detected on the domain. Database servers to which you can connect but which are not configured on the same domain as the computer where you are installing WhatsUp Gold are not shown. The Browse dialog scans your entire domain, so it may take some time before showing you a list of database servers.

b) Select the appropriate authentication method for your database server.

- If your database server is a member of a domain and is configured to accept Windows user names, select **Windows authentication**. The user whose credentials you use to run WhatsUp Gold must be a member of the same domain as the database server.

WhatsUp Gold Database Migration Guide

- If your database server requires SQL Server authentication, or if the Windows user account under which WhatsUp Gold runs does not have access to the database server via Windows authentication, select **SQL Server authentication using Login ID and password below**, then enter the correct **Login ID** and **Password**.
- c) Click **Next**. The installation program attempts to validate the credentials you entered and checks for the existence of WhatsUp Gold databases on the database server. If WhatsUp Gold databases are found on the database server, the setup program alerts you and asks if you want to continue.
- Select **Yes** to upgrade the databases and continue the installation.
 - Select **No** to select another Microsoft SQL Server.

After the credentials are validated, the Enter Microsoft SQL Server 2005 Express Edition Paths dialog appears.

- 6 This dialog lists the third-party resources that the installation program installs, including Microsoft SQL Server 2005 Express Edition client tools (required for installations of WhatsUp Gold that use Microsoft SQL Server databases).

Click **Next**. The Choose Destination Location dialog appears.

- 7 Select the installation directory for the WhatsUp Gold application files.

The default path is C:\Program Files\Ipswitch\WhatsUp. We recommend that you use the default path.



Tip: You can install WhatsUp Gold to a different location. To select a different location, click **Change**.

After you select the installation directory, click **Next**.



Note: If the installation program detects data from a previous installation of WhatsUp Gold, the Back up Web and Report Files dialog appears. We recommend that you select **Back up the existing Web and report files**, then click **Next**.

The Enable Web Server dialog appears.

- 8 Determine if you want to enable the WhatsUp web server.
- To enable the WhatsUp web server, select **Yes** and enter a port. The default port is 80.



Note: You must select a port that is not already in use. If the port you enter is in use, you must enter a different port or stop the service using the entered port before you can continue installing WhatsUp Gold. If you choose to stop the service running on the port you want to use, you must disable it permanently. If you only disable it temporarily, a port conflict will occur the next time the disabled service is started.

- To use Microsoft Internet Information Services, select **No**, then see *Configuring the web server* in the Help.

After making a selection, click **Next**.



Note: If the firewall is enabled when WhatsUp Gold is installed, the port you specify is opened in the Windows Firewall. This allows other computers on the network to log on to the WhatsUp Gold Web interface.

- 9 Click **Install** to install WhatsUp Gold. The setup program installs and configures WhatsUp Gold.
- 10 When the installation completes, the InstallShield Wizard Complete dialog appears.
To see the release notes after the installation program closes, select **View WhatsUp Gold release notes and documentation**.
- 11 Click **Finish**. The setup program closes.



Note: The first time you open the WhatsUp Gold console, you are prompted to run a network discovery. It is not necessary to run a discovery at this time, as all of the data collected will be overwritten by your existing database.

Step 4: Migrate settings and files that are are not stored in database

WhatsUp Gold stores some settings in the Windows Registry which must be manually re-entered on the new server.



Caution: We do not recommend exporting registry hives on the existing server to import on the new server, as some settings are custom to the specific computer. Importing the computer-specific settings from one computer into the registry of another can result in instability.



Important: Make sure that non-default port settings are set appropriately on the computer you migrate WhatsUp Gold to.

If any of the following settings were modified on the existing server, the modifications must be repeated on the new server:

- Web Server (**Configure > Program Options > Web Server**)
- Passive Monitor Listeners (**Configure > Program Options > Passive Monitor Listeners**)
- Report Data (**Configure > Program Options > Report Data**)
- Regional (**Configure > Program Options > Regional**)
- Modem port settings (available from the Beeper and Pager actions dialogs)

In addition, any settings manually configured in the registry must also be reconfigured on the new server.

Finally, copy files you have added to the `Data` subfolder of the WhatsUp Gold install directory to the same location on the new server. These files include custom sounds, MIB files, device icons, and SSL certificates.

CHAPTER 2

Migrating the WhatsUp Gold Microsoft SQL Server 2005 Express Edition database to Microsoft SQL Server

In This Chapter

Step 1: Verify Microsoft SQL Server meets requirements.....	17
Step 2: Back up the database	18
Step 3: Migrate the database to Microsoft SQL Server 2005 or Microsoft SQL Server 2008	20
Step 4: Update the database connections.....	22
Troubleshooting migration issues.....	24
For more information	25

This section explains how to migrate the WhatsUp Gold database from an instance of Microsoft SQL Server 2005 Express Edition installed on the same computer as WhatsUp Gold to a local or remote instance of Microsoft SQL Server 2005 or Microsoft SQL Server 2008.

These instructions assume you are using the latest version of WhatsUp Gold. To migrate a database from a previous version of WhatsUp Gold, you can:

- Upgrade to WhatsUp Gold v12.3 or later and follow these instructions.



Note: WhatsUp Gold v12.3 or later introduces automatic database upgrades. It is no longer necessary to manually execute SQL scripts to upgrade a non-standard database.

- Consult the user guide for the previous version of WhatsUp Gold for instructions specific to that version.

Step 1: Verify Microsoft SQL Server meets requirements

You can use an existing Microsoft SQL Server 2005 or Microsoft SQL Server 2008 to store the data collected by WhatsUp Gold. To do this, these requirements must be met:

- Microsoft SQL Server 2005 or Microsoft SQL Server 2008 English must be installed on the WhatsUp Gold host computer or another computer.



Important: Make sure that the "master" database for the existing SQL Server database instance that is hosting the WhatsUp database is configured to use case-insensitive collation.



Important: WhatsUp Gold does not support non-English versions of Microsoft SQL Server 2005 or Microsoft SQL Server 2008.

- Microsoft SQL Server 2005 or Microsoft SQL Server 2008 must be configured to allow WhatsUp Gold to authenticate.
 - If Microsoft SQL Server is installed on a remote computer, remote connections must be allowed. For more information, see *How to configure Microsoft SQL Server to allow remote connections* (<http://support.microsoft.com/kb/914277>).
 - Use a Microsoft SQL Server user account to connect to the database.
- Microsoft SQL Server must be configured to have a user account that meets the following requirements:
 - Full administrator privileges to Microsoft SQL Server, not just the WhatsUp Gold databases. WhatsUp Gold only supports accessing the database via an account with full administrator rights. WhatsUp Gold does not support using a limited access database user account.
 - User's language is set to (United States) English. This can be set in the properties for the login used by WhatsUp Gold.

If you need assistance configuring or verifying these prerequisites, contact your database administrator or refer to the *Microsoft SQL Server documentation* (<http://support.microsoft.com/ph/2855>).



Note: WhatsUp Gold no longer supports Microsoft SQL Server 2000.

Step 2: Back up the database

Execute this procedure on the computer where WhatsUp Gold is installed.

- 1 From the WhatsUp Gold console, back up the WhatsUp and Flow Monitor databases.



Note: When you back up a database, you are prompted for a file name for the backup file and a folder to save it in.

- To back up the WhatsUp database, select **Tools > Database Utilities > Back Up WhatsUp SQL Database**.
 - To back up the Flow Monitor database, select **Tools > Database Utilities > Back Up Flow Monitor SQL Databases > Back Up Flow Monitor Current Database**.
 - To back up the NFArchive database, select **Tools > Database Utilities > Back Up Flow Monitor SQL Databases > Back Up Flow Monitor Archive Database**.
- 2 Close or shut down all programs and services that interact with WhatsUp Gold.
 - Close the WhatsUp Gold console.



Tip: You can use the WhatsUp Services Controller to manage services. For more information, see Using the WhatsUp Services Controller.

- Ipswitch Alert Center
 - Ipswitch Discovery
 - Ipswitch Flow Collector
 - Ipswitch WhatsUp Engine
 - Ipswitch Service Control Manager
 - Stop the Web server.
 - If you are using the WhatsUp Gold Web server, stop the Ipswitch Web Server\$WhatsUp service. For more information, see *Stopping and starting the internal web server* in the Help.
 - If you are using IIS as your web server, stop the IIS service.
 - Close the Ipswitch Task Tray application and the WhatsUp Gold Desktop Actions task tray application. For each, right-click the icon and select **Close**.
- 3 If the Microsoft SQL Server 2005 or Microsoft SQL Server 2008 server to which you are migrating the database is installed on another computer, copy the `.dat` files created during the backup process to the remote computer. These files are located in the locations you specified during step 1.

Step 3: Migrate the database to Microsoft SQL Server 2005 or Microsoft SQL Server 2008

Execute this procedure on the computer where Microsoft SQL Server 2005 or Microsoft SQL Server 2008 is installed.

- 1 Open a command prompt on the computer where Microsoft SQL Server 2005 or Microsoft SQL Server 2008 is installed.
- 2 Create three databases on Microsoft SQL Server 2005 or Microsoft SQL Server 2008. These are the databases into which you will restore the backups from Microsoft SQL Server 2005 Express Edition. To create the databases, execute the following case-sensitive commands:



Note: In the following commands, substitute `<SQL server name>` with the host name of Microsoft SQL Server 2005 or Microsoft SQL Server 2008. If Microsoft SQL Server uses a named instance (rather than the default instance), enter `SQL_server_name\Instance_name` for `<SQL server name>`.

- To create the WhatsUp database:

```
sqlcmd -E -S "<SQL server name>" -Q "CREATE DATABASE WhatsUp"
```

- To create the Flow Monitor database:

```
sqlcmd -E -S "<SQL server name>" -Q "CREATE DATABASE NetFlow"
```

- To create the NFArchive database:

```
sqlcmd -E -S "<SQL server name>" -Q "CREATE DATABASE NFArchive"
```



Note: Database names must exactly match the database names from Microsoft SQL Server 2005 Express Edition: `WhatsUp`, `NetFlow`, and `NFArchive`.



Note: If Microsoft SQL Server 2005 or Microsoft SQL Server 2008 is configured with non-default collation standards, you must set collation for each database to `SQL_Latin1_General_CP1_CI_AS`.

- 3 For each of the three databases, import the backup file into the new database. Use this case-sensitive command:



Note: The entire command should be entered on a single line in the command prompt.

WhatsUp Gold Database Migration Guide

```
sqlcmd -E -S "<SQL server name>"
-Q "RESTORE DATABASE <database name>
FROM DISK='<location of .dat file>' WITH REPLACE,
MOVE '<database name>'
TO '<location of data file for SQL database>',
MOVE '<database log>'
TO '<location of log file for SQL database>'"
```



Note: The value of <database name> for the WhatsUp database is usually WhatsUp. However, if you are migrating a database created by WhatsUp Gold v12.0.2 or earlier, use WhatsUp_dat. For <database log>, always use WhatsUp_log.



Note: If you do not know the location of the data and log files for the databases, you can use SQL Server Management Studio to find this information. In SQL Server Management Studio, right-click the database, select **Properties**, then select the **Files** page. You can identify which file is the data file by the value in the **File Type** column. The locations for the data and log files are under the **Path** column.

For example:



Note: These examples assume that you are restoring to the default instance on a Microsoft SQL Server 2005 or Microsoft SQL Server 2008 with a host name of SQLServer, and that the paths to data and log files follow Microsoft defaults.

- To import the WhatsUp database, enter the following command **on a single line** in the command prompt:

```
sqlcmd -E -S "SQLServer"
-Q "RESTORE DATABASE WhatsUp
FROM DISK='D:\database.dat' WITH REPLACE,
MOVE 'WhatsUp_dat'
TO 'C:\Program Files\Microsoft SQL Server\
MSSQL.1\MSSQL\Data\WhatsUp.mdf',
MOVE 'WhatsUp_log'
TO 'C:\Program Files\Microsoft SQL Server\
MSSQL.1\MSSQL\Data\WhatsUp_log.ldf'"
```



Note: If you are migrating a database created by WhatsUp Gold v12.3 or later, replace WhatsUp_dat with WhatsUp in the example above.

- To import the Flow Monitor database, enter the following command **on a single line** in the command prompt:

```
sqlcmd -E -S "SQLServer"
-Q "RESTORE DATABASE NetFlow"
```

```
FROM DISK='D:\NetflowCurrentDatabase.dat' WITH REPLACE,  
MOVE 'NetFlow'  
TO 'C:\Program Files\Microsoft SQL Server\  
MSSQL.1\MSSQL\Data\NetFlow.mdf',  
MOVE 'NetFlow_log'  
TO 'C:\Program Files\Microsoft SQL Server\  
MSSQL.1\MSSQL\Data\NetFlow_log.ldf'"
```

- To import the NFArchive database, enter the following command **on a single line** in the command prompt:

```
sqlcmd -E -S "SQLServer"  
-Q "RESTORE DATABASE NFArchive  
FROM DISK='D:\NetflowArchiveDatabase.dat' WITH REPLACE,  
MOVE 'NFArchive'  
TO 'C:\Program Files\Microsoft SQL Server\  
MSSQL.1\MSSQL\Data\NFArchive.mdf',  
MOVE 'NFArchive_log'  
TO 'C:\Program Files\Microsoft SQL Server\  
MSSQL.1\MSSQL\Data\NFArchive_log.ldf'"
```



Important: You must import all three databases.

After you receive the response that the database was successfully restored for each of the three databases, close the command prompt.

Step 4: Update the database connections

Execute this procedure on the computer where WhatsUp Gold is installed.

- 1 Specify a username and password for WhatsUp Gold to use when connecting to the database.
 - a) From the Windows Start menu, select **Control Panel > Administrative Tools > Data Sources** and select the **System DSN** tab.
- OR -
For 64-bit OSs start the Command Prompt (click **Start > Run**), enter `c:\Windows\SysWOW64\odbcad32.exe`, then select the **System DSN** tab in the ODBC Data Source Administrator dialog.
 - b) Select the `WhatsUp` DSN and click **Configure**. The Configuration wizard appears.
 - c) Verify that the fields in the first dialog are correct for your SQL Server authentication preferences, then click **Next**.

- d) On the second dialog, verify that the **With SQL Server authentication using login ID and password entered by the user** option is selected. In the **Login** field, enter the SQL username. In the **Password** field, enter the SQL user's password. Click **Next**.
 - e) On the third dialog, verify that **Change the default database to** is selected and that the `WhatsUp` database appears in the drop-down menu. Click **Next**.
 - f) Continue to click **Next** until you come to the final dialog, then click **Finish**. The ODBC Microsoft SQL Server Setup dialog opens. You can click **Test Data Source** to test the configuration or click **OK**.
 - g) Repeat steps b-f for the `NetFlow` DSN.
- 2** Configure WhatsUp Gold and its plug-ins to use the updated username and password for the database.
- a) Open the WhatsUp Gold Database Configuration Utility from the Start menu at **Start > Programs > Ipswitch WhatsUp Gold > Utilities > Database Configuration Utility**.
 - b) Select **Use SQL Server Authentication**.
 - c) Enter the **Username** and **Password** that you entered in the DSN, then click **Connect**. The utility verifies the connection information. If the information is correct, the Update Registry dialog appears.
 - d) Verify that **Restart the WhatsUp service after the update** is *not* selected.
 - e) Click **Save**. The utility updates the database connection settings and restarts effected services. The Finished dialog appears.
 - f) Click **Finish**. The Database Configuration Utility closes.
- 3** Remove the Microsoft SQL Server 2005 Express Edition service dependencies from Ipswitch WhatsUp Engine, Ipswitch Flow Collector, Ipswitch Alert Center, and Ipswitch Discovery services.
- a) Open the Windows command prompt. Select **Start > Run**, then enter `cmd.exe`.
 - b) Enter the following commands:
 - `sc config "Ipswitch WhatsUp Engine" depend= "RPCSS"`
 - `sc config "Ipswitch Flow Collector" depend= ""`
 - `sc config "Ipswitch Alert Center" depend= ""`
 - `sc config "Ipswitch Discovery" depend= ""`



Note: There is a space after `depend=` and before `"RPCSS"` and `""`. This space is required!

These commands remove the dependency on Microsoft SQL Server 2005 Express Edition from the Ipswitch WhatsUp Engine, Ipswitch Flow Collector, Ipswitch Alert Center, and Ipswitch Discovery services.

- 4 Start the following services:
 - Start the Ipswitch WhatsUp Engine, Ipswitch Flow Collector, Ipswitch Alert Center, Ipswitch Discovery, and Ipswitch Service Control Manager services.



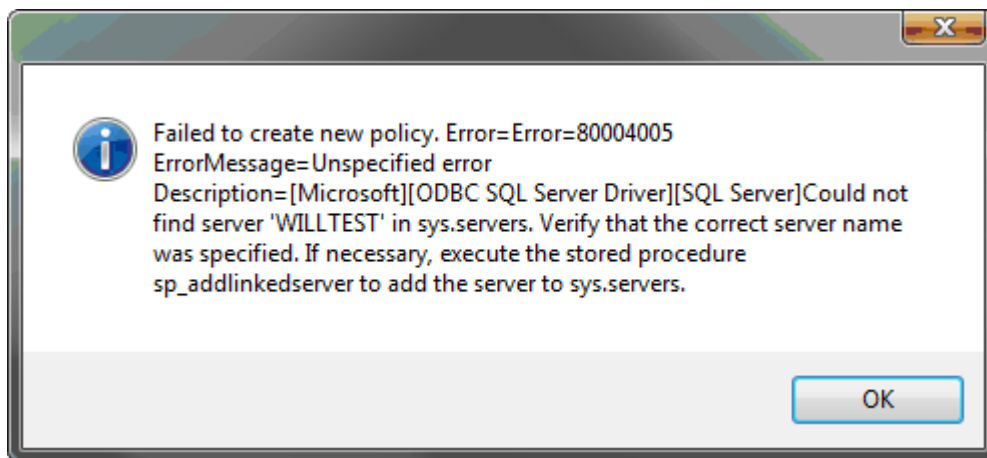
Tip: You can use the WhatsUp Services Controller to manage services. For more information, see Using the WhatsUp Services Controller.

- Start the Web server. If you are using the WhatsUp Gold Web server, start the Ipswitch Web Server\$WhatsUp service. If you are using Microsoft Internet Information Services (IIS) as your web server, start the IIS service.
- Start the Desktop Actions Application and the Task Tray Application. Select each application on the Start menu at **Start > Programs > Ipswitch WhatsUp Gold > Utilities**.

After completing these steps, WhatsUp Gold resumes polling and writes all new data to the Microsoft SQL Server 2005 or Microsoft SQL Server 2008 database.

Troubleshooting migration issues

Error: "Could not find '<SQL server name>' in sys.servers."



If you encounter this error after migrating to Microsoft SQL Server 2005 or Microsoft SQL Server 2008, the host name of the Microsoft SQL Server server may have been changed after Microsoft SQL Server was installed. This causes a disconnect between the actual host name of the server and what Microsoft SQL Server 2005 or Microsoft SQL Server 2008 believes the host name to be.

There are two ways to correct this:

- Change the host name of the Microsoft SQL Server 2005 or Microsoft SQL Server 2008 back to what the host name was when Microsoft SQL Server was installed.
- Update the sys.servers table to reflect the correct information.
 - 1 Execute these commands in the command prompt:
 - `sqlcmd -E -S <SQL server name> -d master -Q "EXEC sp_dropserver '<old host name>'"`
 - `sqlcmd -E -S <SQL server name> -d master -Q "EXEC sp_addserver '<new host name>', 'local'"`
 - 2 Restart Microsoft SQL Server 2005 or Microsoft SQL Server 2008.

For more information

For more information on migrating from Microsoft SQL Server 2005 Express Edition to Microsoft SQL Server 2005, or for help with troubleshooting migration problems, visit the *WhatsUp Gold support site* (<http://www.whatsupgold.com/support/index.asp>) or the *WhatsUp Gold community site* (<http://www.whatsupgold.com/wwc14forumsmore>).

Copyright notice

©1991-2009 Ipswitch, Inc. All rights reserved.

This document, as well as the software described in it, is furnished under license and may be used or copied only in accordance with the terms of such license. Except as permitted by such license, no part of this publication may be reproduced, photocopied, stored on a retrieval system, or transmitted, in any form or by any means, electronic, mechanical, recording, or otherwise, without the expressed prior written consent of Ipswitch, Inc.

The content of this document is furnished for informational use only, is subject to change without notice, and should not be construed as a commitment by Ipswitch, Inc. While every effort has been made to assure the accuracy of the information contained herein, Ipswitch, Inc. assumes no responsibility for errors or omissions. Ipswitch, Inc., also assumes no liability for damages resulting from the use of the information contained in this document.

IMail, the IMail logo, WhatsUp, the WhatsUp Gold logo, WS_FTP, the WS_FTP logos, Ipswitch, and the Ipswitch logo are trademarks of Ipswitch, Inc. Other products and their brands or company names, are or may be trademarks or registered trademarks, and are the property of their respective companies.

This document was published on Tuesday, November 10, 2009 at 08:53.