

---

Version 6.2.0

# MW Translator Installation Guide



## Document History

Part Number	Product Name	Date
MWT500-611	MW Translator Installation Guide	02/2010
MWT550-611	Same as above	07/2011
MWT600-611	Same as above	11/2011
MWT610-611	Same as above	11/2012
MWT620-611	Same as above	06/2018

## Copyright

© 2022 Progress Software Corporation and/or one of its subsidiaries or affiliates. All rights reserved.

These materials and all Progress® software products are copyrighted and all rights are reserved by Progress Software Corporation. The information in these materials is subject to change without notice, and Progress Software Corporation assumes no responsibility for any errors that may appear therein. The references in these materials to specific platforms supported are subject to change.

Chef, Chef (and design), Chef Infra, Code Can (and design), Compliance at Velocity, Corticon, DataDirect (and design), DataDirect Cloud, DataDirect Connect, DataDirect Connect64, DataDirect XML Converters, DataDirect XQuery, DataRPM, Defrag This, Deliver More Than Expected, DevReach (and design), Icenium, Inspec, Ipswitch, iMacros, Kendo UI, Kinvey, MessageWay, MOVEit, NativeChat, NativeScript, OpenEdge, Powered by Chef, Powered by Progress, Progress, Progress Software Developers Network, SequeLink, Sitefinity (and Design), Sitefinity, Sitefinity (and design), SpeedScript, Stylus Studio, Stylized Design (Arrow/3D Box logo), Styleized Design (C Chef logo), Stylized Design of Samurai, TeamPulse, Telerik, Telerik (and design), Test Studio, WebSpeed, WhatsConfigured, WhatsConnected, WhatsUp, and WS\_FTP are registered trademarks of Progress Software Corporation or one of its affiliates or subsidiaries in the U.S. and/or other countries.

Analytics360, AppServer, BusinessEdge, Chef Automate, Chef Compliance, Chef Desktop, Chef Habitat, Chef WorkStation, Corticon.js, Corticon Rules, Data Access, DataDirect Autonomous REST Connector, DataDirect Spy, DevCraft, Fiddler, Fiddler Everywhere, FiddlerCap, FiddlerCore, FiddlerScript, Hybrid Data Pipeline, iMail, JustAssembly, JustDecompile, JustMock, KendoReact, NativeScript Sidekick, OpenAccess, PASOE, Pro2, ProDataSet, Progress Results, Progress Software, ProVision, PSE Pro, Push Jobs, SafeSpaceVR, Sitefinity Cloud, Sitefinity CMS, Sitefinity Digital Experience Cloud, Sitefinity Feather, Sitefinity Insight, Sitefinity Thunder, SmartBrowser, SmartComponent, SmartDataBrowser, SmartDataObjects, SmartDataView, SmartDialog, SmartFolder, SmartFrame, SmartObjects, SmartPanel, SmartQuery, SmartViewer, SmartWindow, Supermarket, SupportLink, Unite UX, and WebClient are trademarks or service marks of Progress Software Corporation and/or its subsidiaries or affiliates in the U.S. and other countries. Java is a registered trademark of Oracle and/or its affiliates. Any other marks contained herein may be trademarks of their respective owners.

This document was published on Tuesday, May 09, 2023 at 16:30.

*MW Translator Installation Guide*

---

# Contents

<b>Introduction</b>	<b>1</b>
Overview .....	1
Purpose and Scope .....	1
Audience .....	1
Acronyms and Definitions.....	1
Contents of Release .....	2
MW Translator Workbench .....	2
MW Translator Operator Program .....	3
Translator Runtime Module.....	4
Operating System Support for MW Translator Workbench and Operator Program.....	4
Operating System Support for MW Translator Service and TRM .....	4
Technical Support.....	5
<b>Installing the MW Translator Workbench and Operator Program</b>	<b>7</b>
Installation Options.....	7
Basic Instructions .....	7
Installing TRM to Support MessageWay Version 6.1.....	9
Installing on Windows.....	9
Installing on Unix/Linux .....	9
Upgrading MW Translator .....	10
Upgrading from MW Translator 5.0 or Higher to 6.2 .....	10
Upgrading From MW Translator 5.0 or Higher to 6.1.....	11

Copying Support Files for MW Translator Workbench Tutorial .....	12
Re-installing MW Translator .....	12
Installing a Remote Operator Program .....	12
Additional Tasks to Configure a Remote Operator Program .....	13
Installing a New Database Environment .....	21
<b>Testing a Translation</b> .....	<b>23</b>
Procedures to Verify Installation .....	23
<b>Installing Maintenance Releases</b> .....	<b>25</b>

---

---

# Introduction

## Overview

MW Translator processes business information for exchange between trading partners. It provides electronic business document translation and routing services.

MW Translator works in two modes: a configuration and test mode and a production mode. In test mode, MW Translator runs under Windows and includes the MW Translator Workbench and the MW Translator Operator Program. The MW Translator Workbench allows users to configure definitions, identify processing requirements and run tests. The Operator Program is a bridge between the test environment and the production or target environment. It provides a controlled connection to the target platform to update production configuration files and to query the logging and reconciliation database. In production mode, MW Translator runs under the following production server platforms:

- Windows (installed with MessageWay)
- UNIX (installed with MessageWay)
- Linux (installed with MessageWay)

In both modes, MW Translator uses the Translator Runtime Module (TRM) to process the information. In test mode, the TRM is invoked from the Test window in the Workbench. In production mode, the TRM is integrated with and invoked from MessageWay specific to the target platform. The TRM may also be integrated with other applications using the MW Translator API to provide translation and routing services.

## Purpose and Scope

This document covers the release and installation procedure for MW Translator version 6.2.0.

## Audience

This document is intended for MW Translator users who wish either to upgrade the existing version of the software or to perform a fresh installation of version 6.2.0.

## Acronyms and Definitions

This document uses the following acronyms:

TRM	Translator Runtime Module
-----	---------------------------

## Contents of Release

This installation of MW Translator consists of the following components:

Component	Purpose
MW Translator Workbench (includes X12 and EDIFACT standards and TRM for Windows testing module)	User interface for configurations and testing, generally used on a workstation.
MW Translator Operator Program (includes Control Reference Manager for enhanced control references and Reconciliation Query for logging and reconciliation)	User interface for operators to maintain partner configurations, to query and maintain logging and reconciliation database, to upload new configurations to Windows, UNIX and Linux target systems.

## MW Translator Workbench

The MW Translator Workbench is a Windows program that provides configuration and testing services for electronic business documents. You use MW Translator to define public and proprietary standards, to configure partners and to create maps. Standards, Partners and Maps are stored in a configuration database.

For testing, you use the Workbench to generate ASCII text files, which are required by the Runtime Module to control translation and routing. The Workbench includes a test Translator Runtime Module (TRM) to quickly test new maps and definitions. The test version of the TRM is built from the same code base as the production version of the TRM.

The Workbench allows users to copy complete standard dictionaries, wrapper definitions, document definitions, Maps, cross-reference tables, Acknowledgment Profiles, Trade Agreement Profiles, Partner Profiles and Standard Identification Profiles. Each of these may be copied directly between two different MW Translator databases, copied to the same database (with a name change), and exported to a text file or imported from the same format text file.

The Workbench includes online help. You can access primary help from any window by selecting the **F1** key. What's This help has a limited description of what each field does. Full explanations of all fields are available in the online help reference section. Similar information is also available in the *MW Translator Workbench User's Guide and Reference* distributed as a PDF file. In addition, the *MW Translator Workbench Tutorial* is provided as a PDF file to familiarize the user with the capabilities and basic use of the Workbench interface.

## X12 and EDIFACT Standards

The X12 and EDIFACT standards' dictionaries are included with the MW Translator Workbench as text files in the **WorkbenchStandards** folder. Standards may be loaded or reloaded to the Workbench database at any time.

## Examples

The Workbench includes various examples that are located in the **Workbench\Examples** folder. There are examples of user exits, which can be written for MW Translator processing. There are also translation examples, one set for XML and another example, X850Test, which is loaded during installation.

## MW Translator Operator Program

The MW Translator Operator Program allows an operator to create and maintain partnership definitions. It is also a bridge between the Windows test system and the target, production MessageWay system. It provides the following features:

- Maintenance of a shared partner configuration database residing on a Windows system.
- Partner-relationship control reference management.
- Upload of generated definitions (standards, maps, partners, etc.) to a MessageWay target system.
- Queries against the MessageWay logging and reconciliation information.

The Operator Program includes online help. Documentation containing user and reference information is in the *MW Translator Operator Guide and Reference*, provided as a PDF file.

## MW Translator Operator Program for Remote Operator

Users may install the Operator Program on a machine that is separate from the MW Translator database. This method provides remote access to the operator program functions without having to be at the physical location of the MW Translator database.

## Control Reference Manager

The Control Reference Manager is included with the Operator Program. It is the client side of a client-server application that lets you configure partner-specific control reference methods and seed values.

## Query for Logging and Reconciliation

The MW Translator Operator Program provides users with the ability to control what information is logged to the logging SQL database during production processing. Users may also specify whether to reconcile documents sent to trading partners with inbound responding acknowledgments. From the Operator Program, users may query the information logged for inbound and outbound documents and track and control the reconciliation process.

## Translator Runtime Module

The Translator Runtime Module (TRM) on all supported platforms allows users to perform MW Translator processing in related target environments. The TRM runs as a service associated with one or more MW Translator services.

---

**NOTE:** The TRM for MessageWay servers is distributed in the MessageWay release. The TRM distributed with this installation is used by the Workbench.

---

## Operating System Support for MW Translator Workbench and Operator Program

As noted above, the MW Translator Workbench and Operator program can be installed on Windows systems only. The MW Translator Workbench and Operator Program version 6.2.0 are both supported on the following Windows versions:

- Servers - Windows Server 2008 and Windows Server 2012
- Workstations - Windows XP, Windows Vista, Windows 7 and Windows 10

## Operating System Support for MW Translator Service and TRM

The MW Translator Service and TRM version 6.2.0 both run under the MessageWay Server and are part of the MessageWay Server installation for customers who purchase the translation option.

To see what operating systems are currently supported by MessageWay, refer to the *MessageWay Installation Guide*.



# Technical Support

The MessageWay Technical Support hub is an information and diagnostic center available for customers to:

- Obtain advice on proper product installation, configuration, and operation
- Report any product problems and receive timely resolutions
- Request a software enhancement
- Request software updates
- Inquire about software release contents and status
- View publications
- See how to contact Technical Support
- See hours of availability for Technical Support

To visit the MessageWay Technical Support hub, please follow the below link:

<https://www.progress.com/support/messageway>

The Technical Support Web site is available 24/7, portions of which require a valid Progress ID. If you have not already done so, you can follow the instructions in the following URL to obtain a valid Progress ID:

<https://knowledgebase.progress.com/articles/Article/how-to-create-a-progress-id>

This page intentionally blank

---

# Installing the MW Translator Workbench and Operator Program

## Installation Options

The MW Translator install program can be used to install or reinstall MW Translator 6.2 software. If a previous version of the translator exists on your machine, and you perform a new install, then the older version of software will remain operational on your Windows system.

---

**NOTE:** Every environment you install or convert from a previous version of MW Translator is considered an MW Translator database environment.

---

During installation, you are prompted to choose one of the following options:

Installation Option	Description
Full MW Translator	Installs the Workbench, the Operator Program, a database environment, and within the Workbench folder, an Examples folder, Standards folder and utils folder. Most users will select this option.
Operator Program	Installs the MW Translator Operator Program only. Select this option to install additional instances of the Operator program. Typically, this is for a remote operator, which is an operator program that resides on a system different from the MW Translator database.
New Database Environment	Installs a new MW Translator database environment. Select this option if you have already installed MW Translator and wish to create a new database environment. This is useful when you want to separate your database configurations for different partners or test versions, for example.

## Basic Instructions

These are the basic instructions for all of the options. For additional instructions and information for a specific option, refer to the appropriate topic.

---

**NOTE:** For a new full installation, the install process may take a few minutes, depending on your system environment. Please allow time for it to finish.

---

## To Install MW Translator Software

- 1 Contact MessageWay Technical Support to request the installation software.
- 2 Copy the installation zip file to the target machine and unzip.
- 3 Double click on the following install file:  
**MW Translator-6.2.0-win32-install.exe**
- 4 Click **OK** to begin the installation.
- 5 Select the appropriate installation option.
- 6 Follow the setup instructions on the screen.

## Installing a Full MW Translator Version

To install the MW Translator Workbench and Operator program, select the **Full MW Translator** option. The Full MW Translator install option installs the following components:

- MW Translator Workbench User Interface
- MW Translator default database environment for configurations and standards definitions
- TRM to run translation tests, which is accessible from the Test window in the user interface
- X12 and EDIFACT public standards in the \Workbench\Standards folder, loaded by user as required
- Examples of translation configurations that can be imported to the Workbench for testing and examples of user exits in the \Workbench\Examples folder
- MW Translator Operator Program that allows maintenance of a partner configuration database, uploading of generated definitions to multiple server targets and queries against the MessageWay logging and reconciliation information.
- A shortcut menu item as **Start|Programs|MW Translator 6.2|Workbench**
- A shortcut menu item as **Start|Programs|MW Translator 6.2|Operator Program**

When you install MW Translator **6.2** or later, the software components and database environments are split among different directories as follows:

Description	Install Tasks
Program files and supporting examples	Install programs and supporting files in executables directory (backup optional), e.g., <b>C:\Program Files (x86)\MW Translator 6.2:</b> <ul style="list-style-type: none"> <li>▪ Software in <b>WORKBENCH\BIN</b> subdirectory</li> <li>▪ Software in <b>OPERATOR PROGRAM\BIN</b> subdirectory</li> <li>▪ Examples in <b>WORKBENCH\EXAMPLES</b></li> <li>▪ Public standards in <b>WORKBENCH\STANDARDS</b></li> <li>▪ Utilities, such as programs to convert xml document type definitions (.dtd) or schema definitions (.xsd) to MW Translator transfer files (.trn), in <b>Workbench\utils</b></li> <li>▪</li> </ul>
Database environments	Install configurations and supporting folders in new directory (backup optional), e.g., <b>C:\MWTranslator 6.2:</b> <ul style="list-style-type: none"> <li>▪ New database environment, <b>\DefaultEnv</b>, which contains <b>\CFG, \DB, \FILES, \IN, \OUT,</b></li> </ul>

Description	Install Tasks
	\\RPT subdirectories

## Installing TRM to Support MessageWay Version 6.1

The MW Translator Service and TRM both run under the MessageWay Application Server and are part of the MessageWay Server installation for customers who purchase the translation option.

A 6.2 version of the TRM is included with this release to address issues that affect both the MW Translator Workbench and the MW Translator Service. The 6.2 version of the TRM is compatible with both the MW Translator Service version 6.1.0 and MessageWay Server version 6.1.0.

To install the TRM version 6.2 on a MessageWay Server version 6.1, follow these instructions. The installation varies depending on the system, Windows or UNIX/Linux.

---

**IMPORTANT:** You must perform the following instructions in order for MW Translator 6.2 to work correctly with MessageWay 6.1.

---

### Installing on Windows

To install the TRM version 6.2 on a Windows MessageWay Server version 6.1, proceed as follows:

- 1 Logon to the application server as the owner of the MessageWay services.
- 2 Stop the MessageWay Translation Service.
- 3 Within <drive>:\Program Files (x86)\MessageWay\bin, rename 'trm.dll' to 'trm-61.dll'.
- 4 Copy file 'trm.dll' from the installation zip file and paste it into <drive>:\Program Files (x86)\MessageWay\bin.
- 5 Start the MessageWay Translation Service.

### Installing on Unix/Linux

To install the TRM version 6.2 on a Unix/Linux MessageWay Server version 6.1, proceed as follows:

- 1 Logon to the application server as the owner of MessageWay.
- 2 Stop the MessageWay Translation Service.
- 3 cd to /opt/messageway/bin and rename 'trm.so' to 'trm-61.so'.
- 4 Copy file 'trm.so' from the installation zip file and paste it into /opt/messageway/bin, securing it accordingly.
- 5 Start the MessageWay Translation Service.

## Upgrading MW Translator

Prior to any software upgrade, you should follow best practices for planning and executing the upgrade. Progress is available to review your upgrade plans and provide guidance if necessary. The upgrade path varies depending on the version you want to upgrade from and to.

**NOTE:** If you are upgrading from unsupported earlier versions, please contact MessageWay Technical Support.

- To upgrade to MessageWay version 6.2 from versions 5.0 or later, the process is automated and seamless.
- To upgrade to MessageWay version 6.1 from versions 5.0 or later, the process is automated and seamless.

The upgrade path based on the version you are starting from is:

Version From	Version To	Upgrade Path
5.0 or later	6.2	5.0 or later > 6.2
5.0 or later	6.1	5.0 or later > 6.1

**NOTES:** The MW Translator database structure was changed in version 6.2. After an upgrade installation, you use the MW Translator Workbench program to convert previous database versions to 6.2. There were no database changes for version 6.1.

Perform the following tasks depending on your upgrade path.




### Upgrading from MW Translator 5.0 or Higher to 6.2

To upgrade your system from 5.0 or higher to 6.2, proceed as follows:

- 1 Install MW Translator and select the *Full MW Translator* option.  
In addition to installing the software, this creates an environment directory, which is by default c:\MWTranslator followed by your version number, that contains one environment, DefaultEnv.
- 2 (Optional) If you want to save the old DefaultEnv, you should rename it before you move it.
- 3 Copy your environment folder(s) from your old directory, such as c:\MWTranslator\MyEnv to the new directory, such as c:\MWTranslator 6.2.

**TIP:** Typically you would only want to copy your environment folders, such as DefaultEnv and any others you have added. You do not want to copy the common, bin, Workbench or Operator Program folders.

- 4 Start the Workbench.
- 5 Add another environment to the **Select Environment** list:

- a) From the toolbar, select the leftmost part  of the **Select Environment** button .  
The **Workbench Environment** dialog appears.
  - b) Select the **Add** button.  
The **Add Environment** dialog box appears.
  - c) Use the **Browse** button  to locate the DB subdirectory of the environment you want to add.  
The location appears in the **Select DB Directory** box.
  - d) Type a name for the environment.
  - e) Select this new environment, and click **OK**.
- 6** When the Workbench tells you it's an older version and asks if you want to update it, click **Yes**.
  - 7** Repeat steps 5 and 6 for each remaining environment.

## Upgrading From MW Translator 5.0 or Higher to 6.1




To upgrade your system from 5.0 or higher to 6.1, proceed as follows:

- 1** Install MW Translator and select the *Full MW Translator* option.  
In addition to installing the software, this creates an environment directory, which is by default c:\MWTranslator followed by your version number, that contains one environment, DefaultEnv.
- 2** (Optional) If you want to save the old DefaultEnv, you should rename it before you move it.
- 3** Copy your environment folder(s) from your old directory, such as c:\MWTranslator\MyEnv to the new directory, such as c:\MWTranslator 6.1.

---

**TIP:** Typically you would only want to copy your environment folders, such as DefaultEnv and any others you have added. You do not want to copy the common, bin, Workbench or Operator Program folders.

---

- 4** Start the Workbench.
- 5** Add another environment to the **Select Environment** list:
  - a) From the toolbar, select the leftmost part  of the **Select Environment** button .  
The **Workbench Environment** dialog appears.
  - b) Select the **Add** button.  
The **Add Environment** dialog box appears.
  - c) Use the **Browse** button  to locate the DB subdirectory of the environment you want to add.  
The location appears in the **Select DB Directory** box.
  - d) Type a name for the environment.
  - e) Select this new environment, and click **OK**.
- 6** When the Workbench tells you it's an older version and asks if you want to update it, click **Yes**.
- 7** Repeat steps 5 and 6 for each remaining environment.

## Copying Support Files for MW Translator Workbench Tutorial

The install also contains support files for the Workbench tutorial. For users following instructions in the tutorial, they should have access to these files. It is logical to store them near your environment definitions.

- 1 Create a directory within the root directory, for example, `c:\MWTranslator 6.2\Workbench Tutorial\`.
- 2 From the installation directory, open the compressed file *MW Translator Workbench Tutorial Support Files.zip*.
- 3 Extract the files to the directory you just created.

## Re-installing MW Translator

The MW Translator 6.2.0 programs can be re-installed via the **Full MW Translator** installation option, which uses the existing install directory of the software.

Re-installing MW Translator will only overlay the software objects; it does not overlay the database environment(s).

If you need to re-install the database, you can install a new environment using the install option **New Database Environment** and then copy the data from the old environment to the newly installed environment. Refer to the *MW Translator Workbench User's Guide and Reference* for further information.

## Installing a Remote Operator Program

You may need to install an Operator Program on a system that is different from the one on which the MW Translator configuration database resides. This is helpful when you are not in the same physical location as the MW Translator database, but you need to access it using the Operator Program. You may also need to access information in the target database environment, which may include configuration text files or the logging and reconciliation information.

To install a remote Operator Program, select the **Operator Program** option. This option only installs the Operator Program user interface. You must manually point to an MW Translator database.

---

**NOTE:** To Install a Workbench and an Operator Program with an MW Translator database environment, select the **Full MW Translator** option.

---

The **Operator Program** option installs the following components:



- Operator Program user interface, manually configured to access an MW Translator configuration database environment
- Configurable communications connection to access a target, production environment for MessageWay *Windows* to:
  - Maintain configuration text files for production processing
  - Maintain partner relationship control reference configurations using Control Reference Manager
  - Provide logging and reconciliation query against the target, production messaging database using a configured ODBC Data Source Name (DSN)
- A shortcut menu item as **Start|Programs|MW Translator 6.2|Operator Program**

Depending on the type of installation, the install tasks are as follows:

Install Option	Description	Install Tasks
Operator Program	New install	Install software in specified directory (when installing a remote operator, the user must manually point to a remote MW Translator configuration database)
	Upgrade or reinstall software	<ul style="list-style-type: none"> <li>▪ Overlays software in \OPERATOR PROGRAM\BIN directory</li> </ul>

## Additional Tasks to Configure a Remote Operator Program

The Operator Program accesses two different types of databases for different purposes using different Operator Program configuration settings. This distinction must be clear to understand the steps in the instructions. The following table explains the differences between the database types, how they are used and which settings you use to link to each type.

Database Type	Use	Link Setting
MW Translator	Contains translator configurations from which the Operator Program and Workbench generates text files used by the TRM during processing	Operator Environment window
Target	Contains message processing information	Options for MessageWay window Server Config page Target DSN


Once you have installed the Operator Program on a remote system, you must complete the following tasks:

- 1 Your system administrator must provide read/write access to the MW Translator configuration database for the remote Operator Program.
- 2 The remote operator must manually point to the MW Translator configuration database.


- 3 Create a Data Source Name (DSN) to point to the messaging database for *MessageWay Windows*.
- 4 Once the Operator Program is installed and the target DSN is created, the operator must point to the appropriate messaging database.

## To Provide Read/Write Access to the MW Translator database for the Remote Operator Program

To allow remote users access to an MW Translator database, you provide share capability at the folder level of your MW Translator environment. Since any given installation of MW Translator may have multiple environments, you need to know which one the Operator Program will access.

- 1 From Windows Explorer, select the folder for the environment you want to access.
- 2 Right-click, and select **Sharing** from the pop-up menu. The folder Properties menu appears.
- 3 Click the box **Share this folder**.
- 4 Click **OK**.
- 5 From Windows Explorer, notice the sharing icon  is now part of the folder icon.

## To Point to the MW Translator Configuration Database from a Remote Operator Program

- 1 Run the Operator Program.
- 2 If no environments exist on this machine, you will be prompted to add an environment. Type in a unique environment name and click the button to browse the network for the MW Translator database subdirectory.
- 3 If another environment already exists, add the new environment by clicking the Select Environment button  from the toolbar, and click the **Add** button. Type in a unique environment name and click the button to browse the network for the MW Translator configuration database DB subdirectory.

---

**IMPORTANT:** Remember that the system administrator must provide network read/write access to the database environments for all remote users.

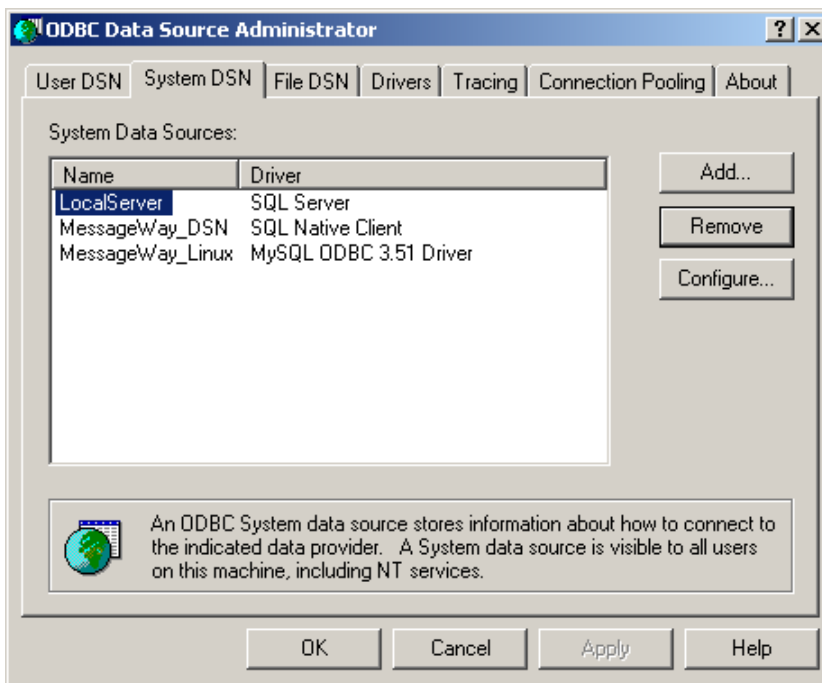
---

## To Create a Data Source Name for a Remote MessageWay Database

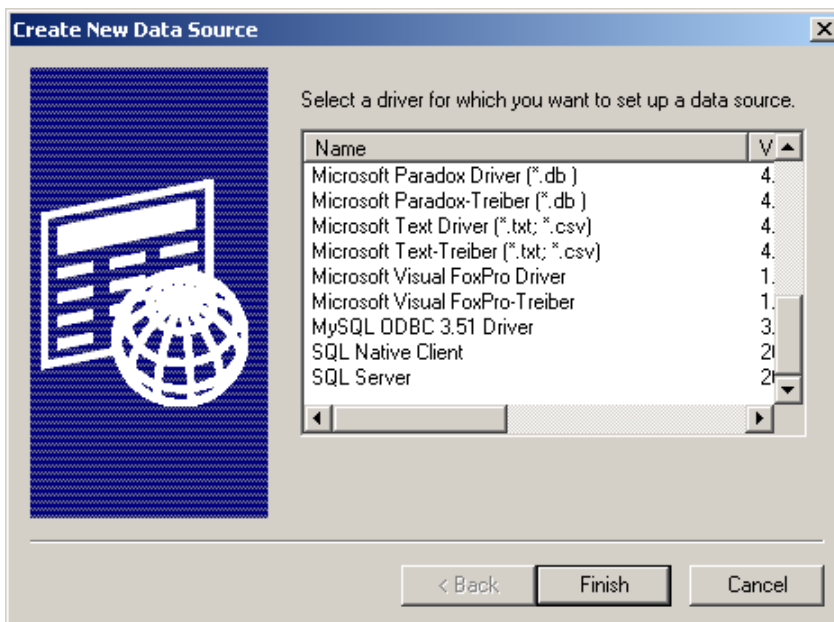
Complete the following steps to allow the remote Operator Program to access the messaging database on the host system from this workstation.

- 1 Click on **Start|Programs|Administrative Tools|Data Sources (ODBC)**. You may also find Administrative Tools in the Control Panel (**Start|Settings|Control Panel**).

- 2 On the ODBC Data Source Administrator window, select the **System DSN** tab.



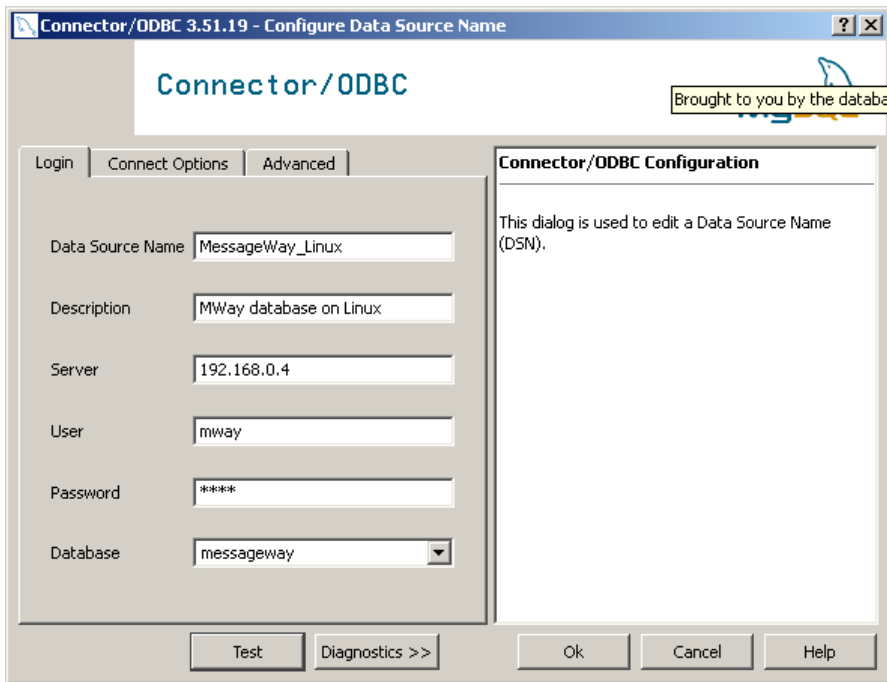
- 3 Click **Add**.
- 4 From the Create New Data Source box, select the appropriate server type, for example:
  - **SQL Server** for MS SQL servers
  - **SQL Native Client** for MS SQL Server 2005 Express
  - **MySQL** driver for MySQL
- 5 Click **Finish**.



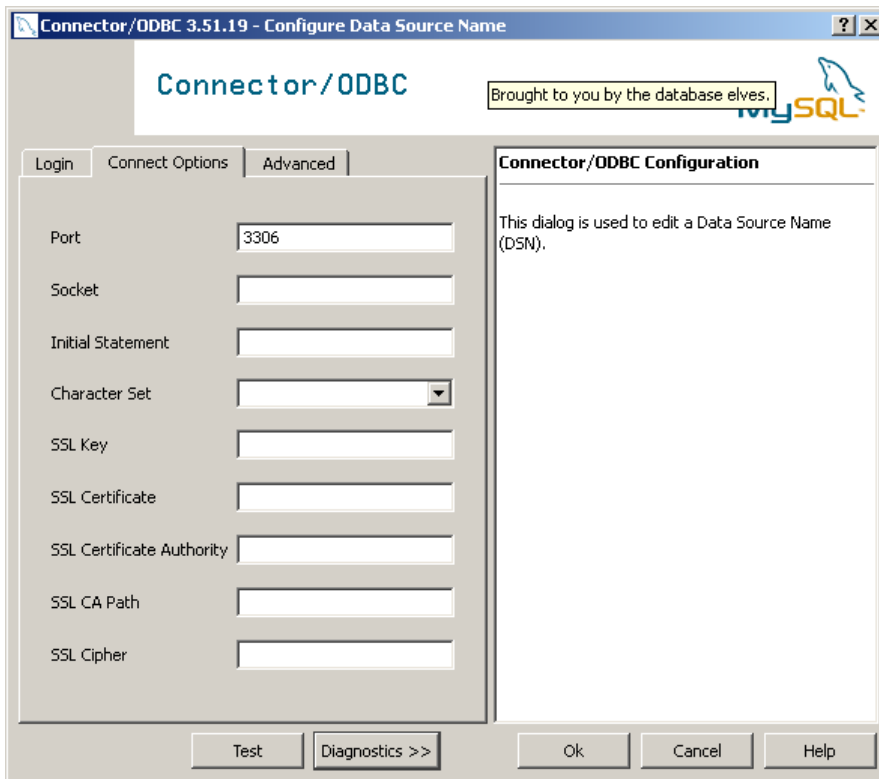
- 6 Follow the instructions for the location of the database: UNIX/Linux or Windows.

### To Connect to a Database Environment on UNIX/Linux

- 1 Enter the appropriate information for your connection, so the Operator Program can log on.
  - In the Connector window, enter a name for your data source (**MessageWay** is recommended as part of the name). This name must be unique to your workstation, and it does not have to match the DSN on the system where the MW Translator database resides.
  - (Optional) Enter a description for your database.
  - Type the URL of the server where the remote SQL database is installed.
  - Type the user name and password required to log on to the database. For this information, you may need to ask your database administrator, or whoever created the database.



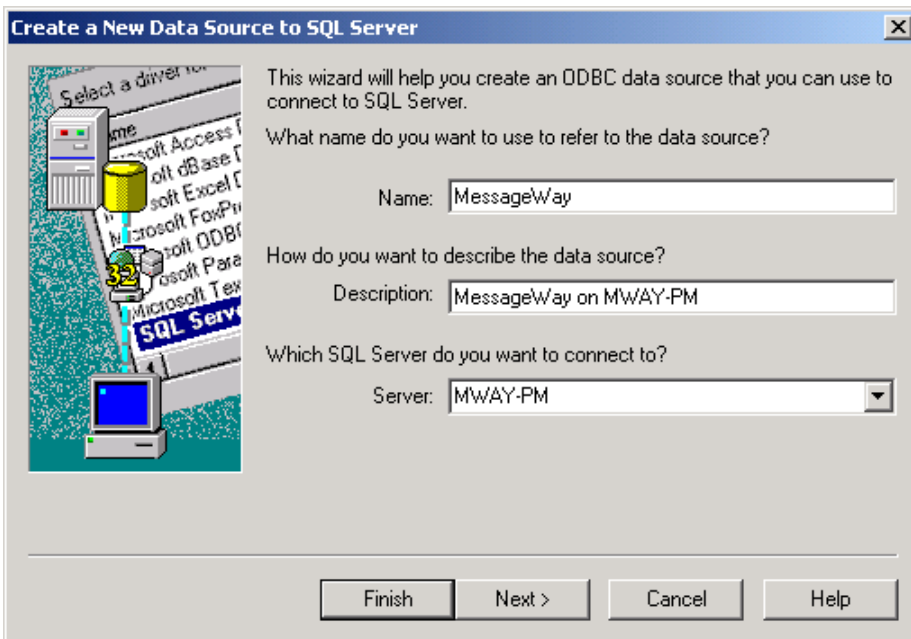
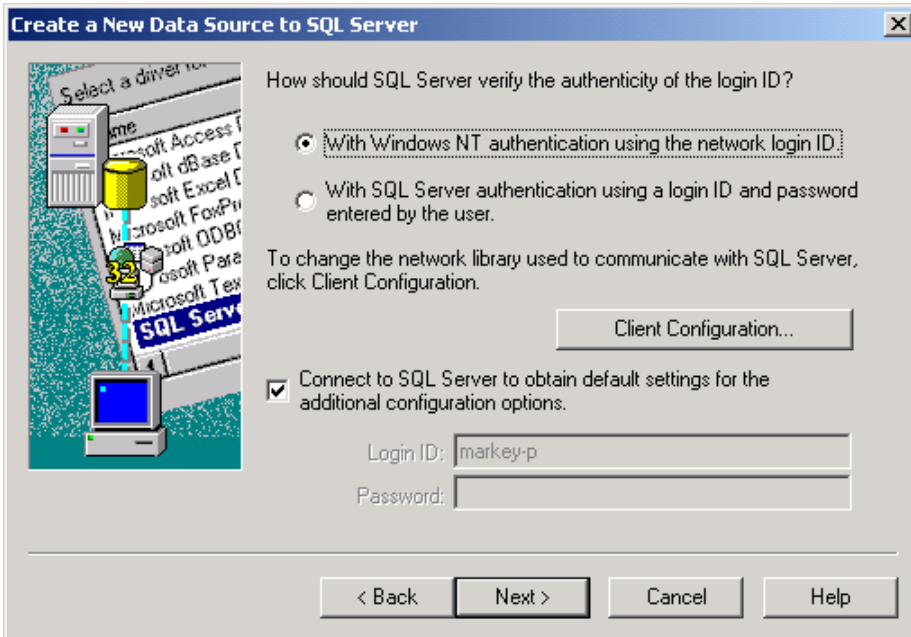
- 2 On the Connect Options tab, make sure the port is where the SQL server will listen for remote connections.



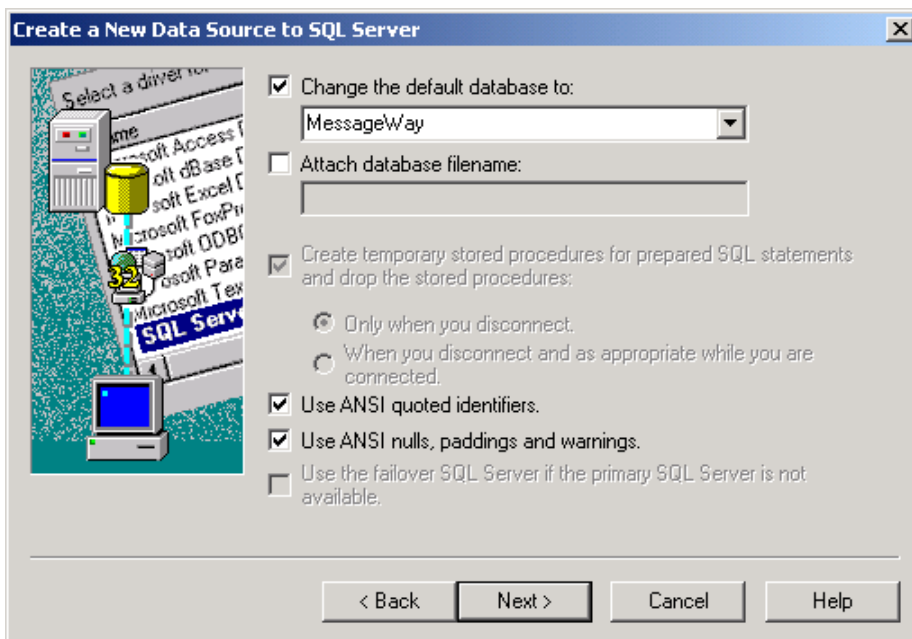
- 3 In the Database field, select the remote database from the list.  
The connector will attempt to connect to this database, so it must be running and available.
- 4 Click **Test** to verify access to the configured database.
- 5 Click **OK**, and continue to click **OK** until the ODBC Setup has been completed.

### To Connect to a Database Environment on Windows

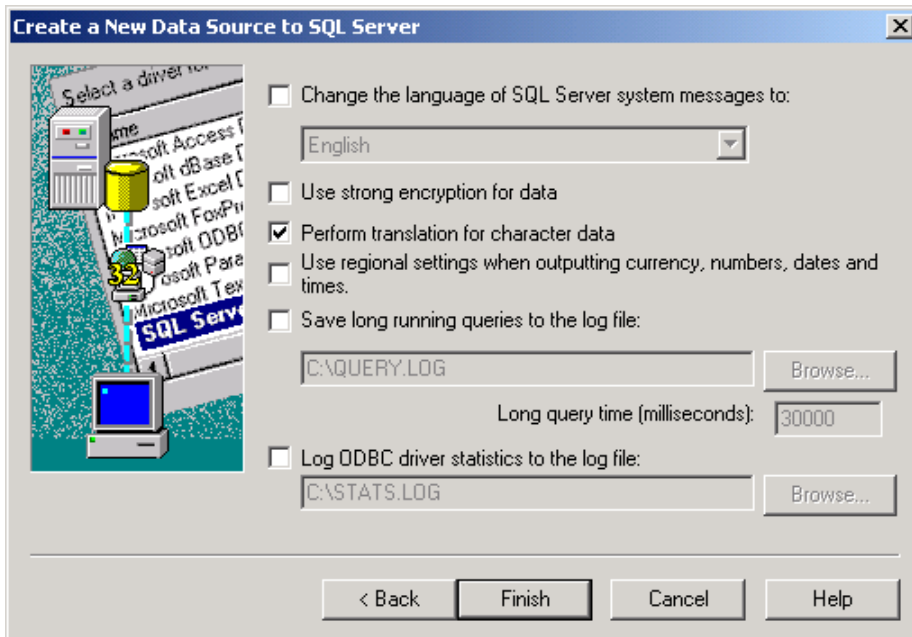
- 1 In the Create a New Data Source to SQL Server window, enter a name for your data source (**MessageWay** is recommended). This name must be unique to your workstation, and it does not have to match the DSN on the system where the MW Translator database resides.
- 2 (Optional) Enter a description for your database.
- 3 Enter the name of the server where the remote SQL database is installed.

4 Click **Next**.5 Accept the default selections for the next window, and click **Next**.6 Click the check box, **Change the default database to**.7 From the drop-down menu, select the name of the MessageWay database, **MessageWay**.

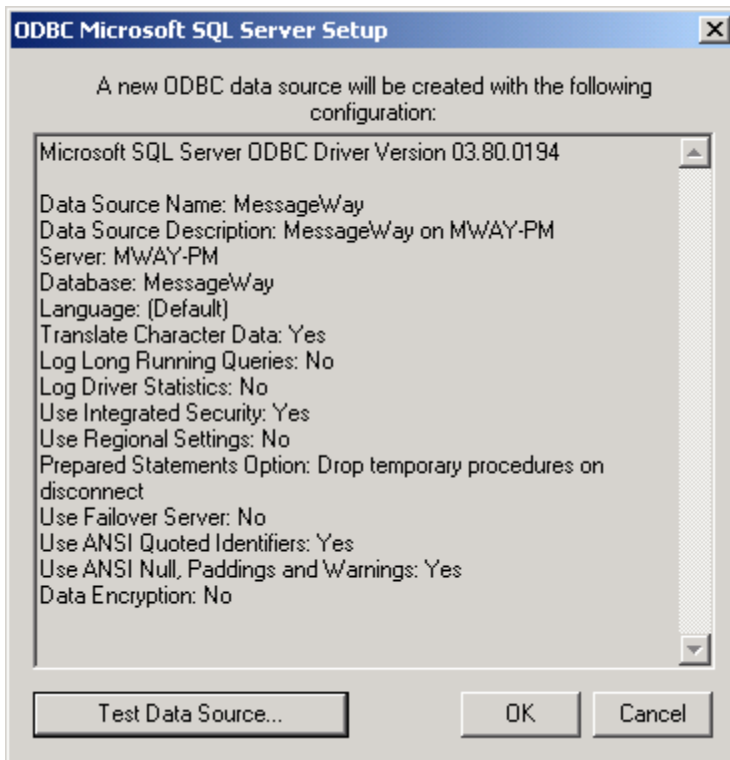
- 8 Accept the remaining check box defaults, and click **Next**.



- 9 Accept the default selections for the next window, and click **Next**.



- 10 Click **Finish** to complete the ODBC configuration. The following screen appears, which allows you to review your setup.



- 11 Click **Test Data Source** to verify access to the configured database.  
 12 Click **OK**, and continue to click **OK** until the ODBC Setup has been completed.


## To Point to the MessageWay Database on the Host System from a Remote Operator Program

The instructions to perform this task depend on the type of target system. For more information, refer to the Procedures section for the Options for MessageWay window in the General Reference section in the online help or the **MW Translator Operator Guide and Reference**.

---

**IMPORTANT:** The following instructions are for MS SQL Server. If you are using a different database engine, please refer to that product documentation for instructions.

---

- 1 Run the Operator Program.
- 2 Select the **Options** button  from the toolbar.  
The Options for MessageWay window appears.
- 3 On the **General** page, from the Target list, select your database, such as **MessageWay**.
- 4 On the **Server Config** page, from the Target DSN list, select the DSN you created to point to the target system.
- 5 From the Server list, select the target server. To update the list, click **Refresh**.



- 6 In the **Port** box, type the number of the TCP port used to access the server.
- 7 In the **MW Translator service** box, enter only the sub-directory where the MW Translator service configurations reside. Do not enter the full path name. The default is **MWTranslator**.
- 8 Click **Apply**.
- 9 Select the **Server Options** tab, which will require that you log on to the target system. For specific instructions, refer to the locations given in the first paragraph.

## Installing a New Database Environment

To install an additional MW Translator database environment, select the **New Database Environment** option. The Workbench and the Operator Program may access the additional environment.

The **New Database Environment** installs an MW Translator database environment for configurations and standards definitions. The **Full MW Translator** option must have been run prior to attempting to select the **New Database Environment** option.

---

**IMPORTANT:** The environment name you enter when adding a **New Database Environment** must be unique and must start with an alpha character.

---

This page intentionally blank.

# Testing a Translation

## Procedures to Verify Installation

After successful installation of MW Translator, you can run a test translation from the Workbench to verify the installation. The sample test translation file that translates a test X12 850 (PO) to a proprietary fixed format document (FPO) and generates an X12 997 acknowledgment is provided as an example. It is loaded into the configuration database during installation. To run this test translation, proceed as follows:

- 1 Select the **Generate|All** menu item to generate all definitions.
- 2 Copy the **X850TEST.TXT** test file to the input directory (as defined in the Directories tab of the **Options** dialog).
- 3 Select **View|Test Setup** menu item to bring up the test screen.
- 4 Select **Test|Add Input** menu item to select the input file and location.
- 5 Specify the following Input and Location values in the appropriate fields, and click on **OK**.  
 Input:       **X850test.txt**  
 Location:   **X850TEST**
- 6 Select **Test|Run** menu item to run the translation.

Verify the output and the MW Translator report files that are created by double-clicking on the output icons.

	Standard	Version	Wrapper	Document
Input File:	X12	EXAMPLE	ISA	850
Output File:	EXAMPLE	1	FWRAP	FPO
Acknowledgment	X12	EXAMPLE	ISA	997

**NOTE:** If you are having problems with the test, you can import the configurations from the subdirectory, **Workbench\Examples\X850Test**. Select **File|Import** menu item to import definitions from **X850test.trn**. Click on **Import** to import the entire test related definitions (documents, wrappers, maps, profiles, partners, etc).

This page intentionally blank

# Installing Maintenance Releases

Maintenance Releases (MRs) are released intermittently as required to correct software issues. They are available upon request by contacting MessageWay Technical Support.

---

**IMPORTANT:** MRs affect only software object code. MRs never change user configurations or environments.

---

The process to install emergency repairs is automated. A readme file accompanies each MR with specific information about the changes that it contains and with instructions for installation.

The basic procedure is as follows:

- 1 Receive the MR from MessageWay Technical Support.
- 2 Read the readme file associated with the MR.

---

**NOTE:** The install file that you receive contains a copy of the readme file.

---

- 3 Follow the instructions in the readme file.

---

**NOTE:** The MR replaces the software in the /bin directory for the affected components. It does not change MW Translator environments or user configurations.

---

- a) For MRs that apply to the MW Translator Workbench, including the Translator Runtime Module (TRM) for the Workbench, run the MR wherever the Workbench is installed. The MR will be installed in /Workbench/bin.
- b) For MRs that apply only to the MW Translator Operator Program, such as for Control Reference Manager or Document Reconciliation client, run the MR wherever the Operator Program is installed. The hotfix will be installed in /Operator Program/bin.
- c) For MRs that apply to both the Workbench and the Operator Program, such as for Generate, GenerateALL or the partner server, run the MR wherever the Workbench is installed. The MR will be installed in both /Workbench/bin and /Operator Program/bin.