



IPSWITCH

# WhatsUp Gold 2016

VoIP Monitor

## **About WhatsUp Gold VoIP Monitor**

About Cisco IP SLA features in the WhatsUp Gold VoIP Monitor plug-in .....	1
--	---

## **Configuring WhatsUp Gold VoIP Source and Destination Devices**

Configuring Cisco devices for IP SLA VoIP UDP Jitter operations.....	4
Enabling the IP SLAs Responder on the Destination Device.....	5
Installing and Configuring WhatsUp Gold VoIP Monitor.....	7
Configuring VoIP.....	7
Refreshing the WhatsUp Gold License for VoIP Monitor .....	8
Using WhatsUp Gold VoIP Monitor.....	9
Using the VoIP Performance Monitor Features and Reports.....	9
Setting Up the VoIP Active Monitor.....	13

---

# About WhatsUp Gold VoIP Monitor

## In This Chapter

About Cisco IP SLA features in the WhatsUp Gold VoIP Monitor plug-in 1

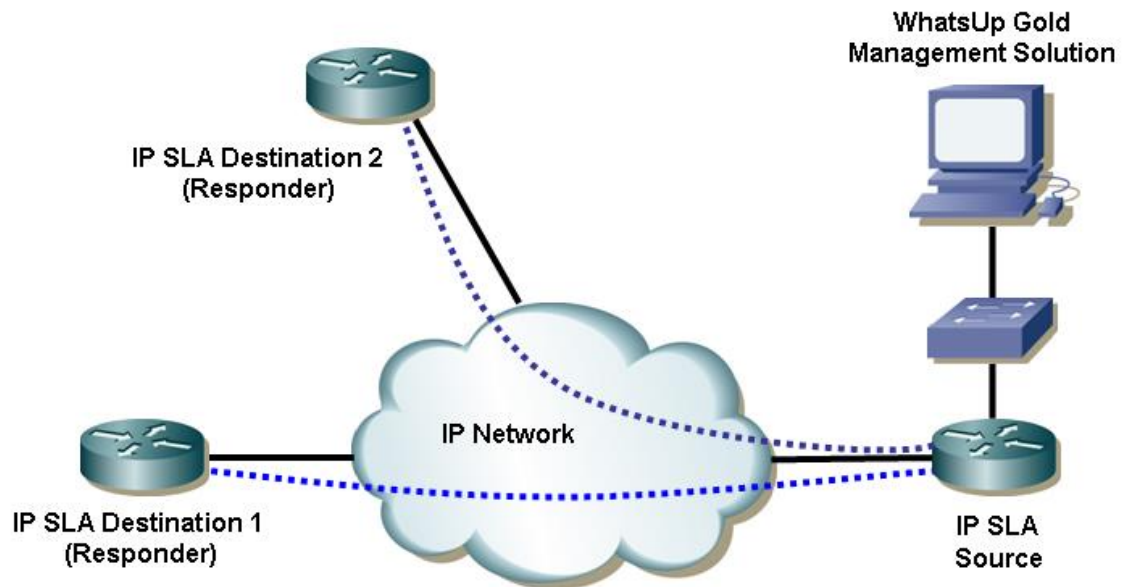
## About Cisco IP SLA features in the WhatsUp Gold VoIP Monitor plug-in

VoIP and Network QoS Monitor plug-in is designed to help network managers monitor key VoIP performance metrics on their network. This is accomplished by using the Cisco IP SLA technology, embedded in many Cisco routers and switches, to monitor the VoIP network performance.

With at least two Cisco IP SLA compatible devices, a source and destination device, the devices generate simulated network data and IP service traffic to measure network performance between the two network devices in real time. The information collected includes data for response time, one-way latency, jitter (interpacket delay variance), packet loss, voice quality scoring (Mean Opinion Score), and Calculated Planning Impairment Factor (ICPIF). WhatsUp Gold then polls the data collected on the IP SLA device and provides this information in the form of dashboard reports, custom performance reports, and alert notifications.

## Using WhatsUp Gold VoIP Monitor

As an example, routers or other IP SLA enabled devices are configured to support IP SLA measurement. The IP SLA source sends UDP traffic (blue dotted lines) in either a local network or across WAN links. A single IP SLA source device may send UDP traffic to multiple IP SLA destination devices to test VoIP performance along a variety of network paths. It then collects round trip and one way response time data, jitter, latency, and packet loss between the source and the destination. The destination device then provides the data to the IP SLA source and WhatsUp Gold polls the source data. The VoIP and Network QoS Monitor reports the IP SLA data in the WhatsUp Gold dashboard reports, custom performance reports, and via alert notifications.



With VoIP performance data available in the WhatsUp Gold reports, you get the big picture view of VoIP performance on the network. You can monitor network performance to determine how existing networks with VoIP devices, such as an IP phone system, are performing. Or, you can also employ WhatsUp Gold VoIP Monitor to determine whether an existing network will support VoIP devices by simulating various VoIP data loads on the network.

The following VoIP performance and active monitors allow you to monitor the following VoIP metrics in WhatsUp Gold. For more information about the VoIP monitors, see *Using VoIP Monitor features and reports* (on page 9):

### Performance monitors

- Mean Opinion Score (MOS)
- ICPIF (Calculated Planning Impairment Factor)
- Jitter - Source to Destination (ms)
- Jitter - Destination to Source (ms)
- Latency - Source to Destination (ms)
- Latency - Destination to Source (ms)
- Percent Packet Loss - Source to Destination
- Percent Packet Loss - Destination to Source

### **Active Monitor**

- Mean Opinion Score (MOS)

**To implement the WhatsUp Gold VoIP Monitor, perform the following tasks:**

- 1** *Configure the Cisco source and destination devices for IP SLA UPS Jitter operations.*
- 2** *Configure the WhatsUp Gold VoIP Monitor (on page 7).*
- 3** *Use the VoIP monitor features and reports to monitor and gather VoIP metrics.*

# Configuring WhatsUp Gold VoIP Source and Destination Devices

## In This Chapter

Configuring Cisco devices for IP SLA VoIP UDP Jitter operations .....	4
Installing and Configuring WhatsUp Gold VoIP Monitor .....	7
Using WhatsUp Gold VoIP Monitor .....	9

## Configuring Cisco devices for IP SLA VoIP UDP Jitter operations

To begin using WhatsUp Gold VoIP Monitor features, you must first configure the Cisco IP SLA source and destination devices for VoIP UDP Jitter operations. Depending on your network configuration, you may want to set up multiple IP SLA destination devices to respond back to one source device.



Before configuring the devices, consider what you want to accomplish with the VoIP performance measurements. You will likely want to simulate a certain amount of VoIP traffic on the network to determine how the network performs with a number of VoIP devices operating on the network. This setting can be affected by changing the number of packets (`num-packets`) sent from the source to destination devices. You may want to simulate up and down VoIP traffic. You can do this by changing the interval (`interval`) for how often to send VoIP packets across the network. There are a number of options available in IP SLA to simulate a variety of network situations for VoIP performance measurements. For more information about these settings, see the *Cisco IOS IP SLAs Configuration Guide, Release 12.4* ([http://www.cisco.com/en/US/docs/ios/12\\_4/ip\\_sla/configuration/guide/hsla\\_c.html](http://www.cisco.com/en/US/docs/ios/12_4/ip_sla/configuration/guide/hsla_c.html)).

To configure the Cisco IP SLA devices:

- 1 Enable the IP SLAs Responder on the destination device (on page 5).
- 2 Configure the IP SLA source device (on page 5).



**Important** Make sure that the source and destination devices are Cisco IOS IP SLA compatible. Refer to the Cisco web site for more information about *Cisco routers that are IOS version and IP SLA compatible* (<http://www.cisco.com/en/US/products/hw/routers/index.html>).

## Enabling the IP SLAs Responder on the Destination Device

To enable the IP SLAs Responder on the destination device:



**Note:** The following instructions are example configuration instructions for configuring an IP SLA destination device. For additional configuration information, see the *Cisco IOS IP SLAs Configuration Guide, Release 12.4* ([http://www.cisco.com/en/US/docs/ios/12\\_4/ip\\_sla/configuration/guide/hsla\\_c.html](http://www.cisco.com/en/US/docs/ios/12_4/ip_sla/configuration/guide/hsla_c.html)).

- 1 In the Cisco Command Line Interface (CLI) on the destination device, enable the privileged EXEC mode, type:  
Router> `enable`  
Type your password if prompted.
- 2 Start the global configuration mode, type:  
Router# `configure terminal`
- 3 Enable the IP SLA responder, type:  
Router(config)# `ip sla responder`
- 4 Repeat steps 1 through 3 for each IP SLA device (responder) for which you want to monitor VoIP network performance.
- 5 Exit the global configuration mode and return to the privileged EXEC mode, type:  
Router(config)# `exit`

To configure the IP SLA source device:



**Note:** The following instructions are example configuration instructions for configuring an IP SLA source device (responder). For additional configuration information, see the *Cisco IOS IP SLAs Configuration Guide, Release 12.4* ([http://www.cisco.com/en/US/docs/ios/12\\_4/ip\\_sla/configuration/guide/hsla\\_c.html](http://www.cisco.com/en/US/docs/ios/12_4/ip_sla/configuration/guide/hsla_c.html)).

- 1 In the Cisco Command Line Interface (CLI) on the source device, enable the privileged EXEC mode, type:  
Router> `enable`  
Type your password if prompted.
- 2 Start the global configuration mode, type:  
Router# `configure terminal`



**Important** Use steps 3 through 6 to set up each RTT entry for which you want to monitor VoIP network performance (between a source and destination path). It is important to use a naming convention that helps you easily identify unique RTT entries for each network path between a source and destination device. The `sla` operation number and `tag` names are used to identify report and monitor names.

## Using WhatsUp Gold VoIP Monitor

---

- 3 Begin configuration for an IP SLA operation and type the IP SLA configuration mode:  
Router(config)# ip sla [operation number]  
For example, type:  
Router(config)# ip sla 200
- 4 Configure the operation as a jitter (codec) operation that generates VoIP scores in addition to latency and jitter statistics from a defined source device to a defined destination device:  
Router(config-sla)# type jitter dest-ipaddr {hostname | ip-address} dest-port port-number codec codec-type tag text (The tag parameter name is important because it creates a user-specified identifier for an IP SLA operation. It is used to name the performance monitors and dashboard views in WhatsUp Gold. Use a tag name that you want to use as an identifier in WhatsUp Gold.)  
For example, type:  
Router(config-sla)# type jitter dest-ipaddr 192.168.199.2  
Router(config-sla)# dest-port 16384  
Router(config-sla)# codec g711alaw  
Router(config-sla)# tag Atlanta to Lexington  
- or enter commands on one line -  
Router(config-sla)# type jitter dest-ipaddr 192.168.199.2 dest-port 16384 codec g711alaw tag Atlanta to Lexington
- 5 Exit the UDP jitter configuration mode and return to the global configuration mode, type:  
Router(config)# exit
- 6 Configure the scheduling parameters for an individual IP SLAs operation:  
Router(config-sla)# ip sla schedule operation-number [life {forever | seconds}] [start-time {hh:mm:ss} [month day | day month] | pending | now | after hh:mm:ss] [ageout seconds] [recurring]  
For example:  
Router(config-sla)# ip sla schedule 200 life forever start-time now



**Tip:** On most devices you can enter the `Ctrl-Z` key combination at any time to interrupt the output and return to privileged EXEC mode. For example, you can enter the `show running-config | begin hostname` command to display the running configuration file at the line containing the hostname setting, then press `Ctrl-Z` at the end of the information in which you are interested.

- 7 Repeat steps 3 through 6 to set up each RTT entry for which you want to monitor VoIP network performance.



---

# Installing and Configuring WhatsUp Gold VoIP Monitor

## In This Chapter

Configuring VoIP.....	7
Refreshing the WhatsUp Gold License for VoIP Monitor.....	8

## Configuring VoIP

If you need to configure new IP SLA enabled devices to monitor VoIP performance, run the configuration utility.

If you want to add reports using the VoIP configuration utility, you must first delete all VoIP performance monitors.

### To run the VoIP and Network QoS Monitor configuration utility:

- 1 From the main menu of the WhatsUp Gold console, select **Tools > VoIP Configuration Utility**. The WhatsUp Gold VoIP Monitor Configuration utility appears.
- 2 Click **Next**. The Device Scan dialog appears with a list of devices configured with SNMP credentials in WhatsUp Gold.



**Important** The VoIP and Network QoS Monitor license should auto-refresh to activate the VoIP Monitor license. If a license error message appears, see *Refreshing the WhatsUp Gold license for the VoIP Monitor* (on page 8).



**Note:** The VoIP monitors use SNMP to acquire the VoIP performance data. If a device is not listed in the device list, make sure that the SNMP credentials are configured for the preferred device in the WhatsUp Gold application, then click **Reload**.

- 3 Select the devices that you want to scan for VoIP Round-trip Time (RTT) data, then click **Next**. The Performance Monitors Setup dialog appears with a list of available VoIP RTT entries found on the selected devices.
- 4 Select the device entries for which you want to view the eight VoIP custom performance monitors, then click **Next**. The Web Report Configuration dialog appears with a list of VoIP devices available to monitor with WhatsUp Gold Performance Monitors.



**Note:** If no SNMP devices are configured for IP SLA, a message appears telling you that the configuration utility could not find any RTT entries for the selected devices. To correct this issue, make sure that source and destination devices are configured for IP SLA. For more information, see *Enabling the IP SLAs Responder on the Destination Device* (on page 5).

- 5 Select the devices and the web user for which you want to create VoIP dashboard views with VoIP dashboard report metrics, then click **Next**. The Active Monitor Setup dialog

## Using WhatsUp Gold VoIP Monitor

---

appears with a list of VoIP devices available to monitor with WhatsUp Gold Active Monitors.



**Tip:** If you want to add multiple users, select the admin user; then from the WhatsUp Gold web interface, the admin can copy the dashboard views to other WhatsUp Gold users. For more information, see *Adding Users to VoIP Dashboard Reports*.

- 6 Select the devices for which you want to monitor the Mean Opinion Score (MOS) thresholds with WhatsUp Gold Active Monitors, then click **Next**. The Configuration Summary dialog appears.
- 7 Review the configuration options you have selected and back up the WhatsUp Gold database before completing the VoIP configuration. Click **Next**, the configuration dialog lists the changes that were implemented for the VoIP monitors.



**Tip:** In the WhatsUp Gold console, click **Tools > Database Utilities > Backup SQL Database** to back up the database.

- 8 Click **Next** to complete the setup utility process, then click **Finish**.

Next, learn more in *Using VoIP monitor features and reports* (on page 9).

## Refreshing the WhatsUp Gold License for VoIP Monitor

If you upgrade an existing WhatsUp Gold license to include VoIP and Network QoS Monitor, use the following instructions to refresh the license and activate VoIP and Network QoS Monitor in WhatsUp Gold.

**To refresh the WhatsUp Gold license:**

- 1 Click **Start > Programs > Ipswitch WhatsUp Gold > Manage WhatsUp Gold License**. The activation program appears.
- 2 Select the **Refresh the current license** option, then click **Next**. Follow the instructions to complete the product activation.

For more help and information about licensing, go to the *WhatsUp Customer Portal* (<http://www.whatsupgold.com/wugCustPortal>).

# Using WhatsUp Gold VoIP Monitor

## In This Chapter

Using the VoIP Performance Monitor Features and Reports.....9

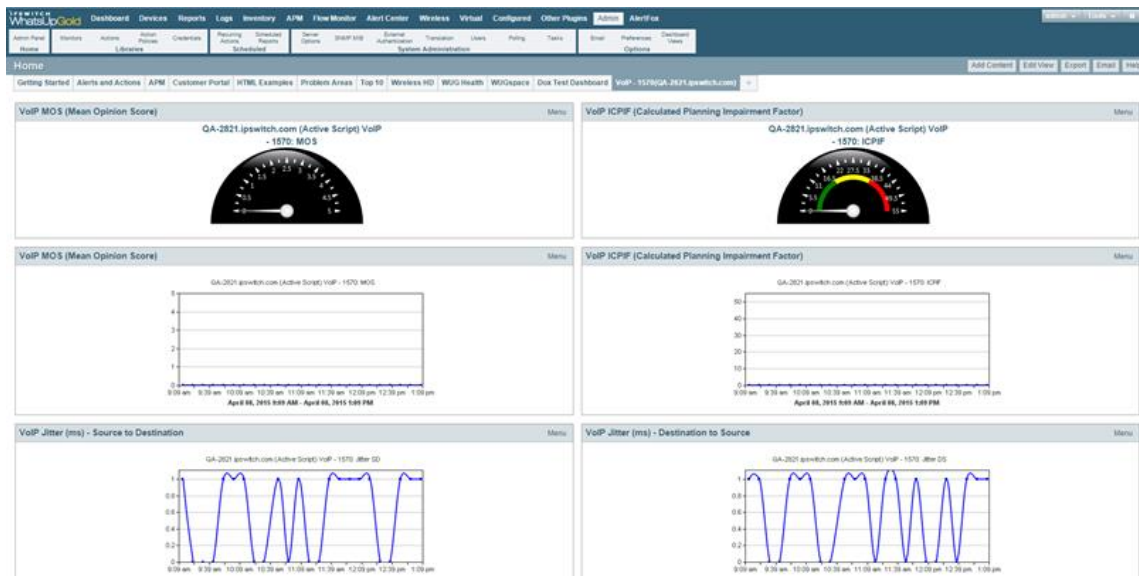
Setting Up the VoIP Active Monitor..... 13

## Using the VoIP Performance Monitor Features and Reports

After WhatsUp Gold VoIP Monitor plug-in is installed, there are eight performance monitors and one active monitor configured for each IP SLA Round-Trip Entry (RTT). You can use WhatsUp Gold reports to view VoIP network performance data and take action based on the data reported.

### VoIP Performance Monitor Reports

VoIP performance monitor data is available by selecting any VoIP dashboard view in the web interface created when *configuring the VoIP monitor in the admin console* (on page 7).



The VoIP dashboard reports available in the VoIP dashboard view are:

**MOS (Mean Opinion Score).** This numerical data indicates the perceived quality of received voice media after it has been compressed and transmitted from a source to a destination device. The MOS rating is based on the following scale:

MOS	Quality	Description of quality impairment
5	Excellent	Imperceptible
4	Good	Perceptible, but not annoying

## Using WhatsUp Gold VoIP Monitor

MOS	Quality	Description of quality impairment
3	Fair	Slightly annoying
2	Poor	Annoying
1	Bad	Very annoying



**Note:** The MOS calculation performed by the Cisco IP SLA device can be customized to fit your network quality criteria using the `advantage-factor` command and other threshold criteria. For more information about this and other custom settings, see the *Cisco document IP SLAs--Analyzing VoIP Service Levels Using the UDP Jitter Operation* ([http://www.cisco.com/en/US/docs/ios/12\\_4t/ip\\_sla/configuration/guide/htvoipj.html](http://www.cisco.com/en/US/docs/ios/12_4t/ip_sla/configuration/guide/htvoipj.html)).

**ICPIF (Calculated Planning Impairment Factor).** This numerical data indicates a value for predefined combinations of packet loss and delay in VoIP communications transmitted from a source to a destination device.

Upper Limit for ICPIF	Speech communication quality
5	Very good
10	Good
20	Adequate
30	Limiting case
45	Exceptional limiting case
55	Customers likely to react strongly (complaints, change of network operator)

**Jitter - Source to Destination (ms).** This data indicates the interpacket delay variance (difference between the interpacket arrival and departure) from the source to the destination devices. Jitter measures the variation in network latency that results in a loss of synchronization over time. It is noticeable to users as distracting pops, clicks, and other line noise.

**Jitter - Destination to Source (ms).** This data indicates the interpacket delay variance (difference between the interpacket arrival and departure) from the destination to the source devices. Jitter measures the variation in network latency that results in a loss of synchronization over time. It is noticeable to users as distracting pops, clicks, and other line noise.

**Latency - Source to Destination (ms).** This data indicates the delay between the time the source device begins sending voice data and the time the destination device begins receiving the voice data. It is noticeable to users as the time difference between when a caller speaks and when the other caller hears what the caller said. If these conversation gaps are large enough, callers may find that they inadvertently interrupt each other in conversations.

**Latency - Destination to Source (ms).** This data indicates the delay between the time the destination device begins sending voice data and the time the source device begins receiving the voice data. It is noticeable to users as the time difference between when a caller

## Using WhatsUp Gold VoIP Monitor

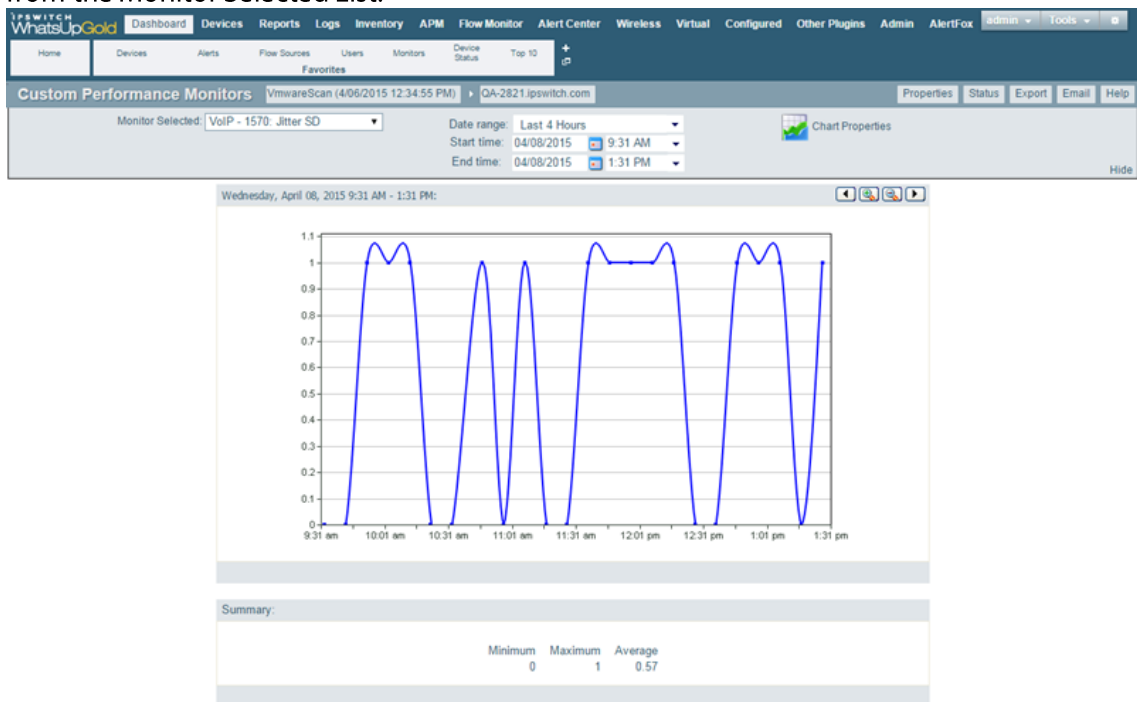
speaks and when the other caller hears what the caller said. If these conversation gaps are large enough, callers may find that they inadvertently interrupt each other in conversations.

**Percent Packet Loss - Source to Destination.** This data indicates the percentage of lost voice data packets between the source and destination devices.

**Percent Packet Loss - Destination to Source.** This data indicates the percentage of lost voice data packets between the destination and source devices.

## VoIP Custom Performance Monitor Reports

Click any VoIP performance monitor report to view a full screen version of that report. You can also click Custom Monitors on the Reports tab, then select any VoIP performance monitor from the Monitor Selected List.



Use the **Date range** and **Start time/End time** controls to select the time frame for which you want to view the VoIP performance data. The report also displays a summary of monitor percentages collected during the time period:

- **Minimum.** The minimum monitor percentage experienced.
- **Maximum.** The maximum percentage experienced.
- **Average.** The average monitor percentage across all sample data for this period.

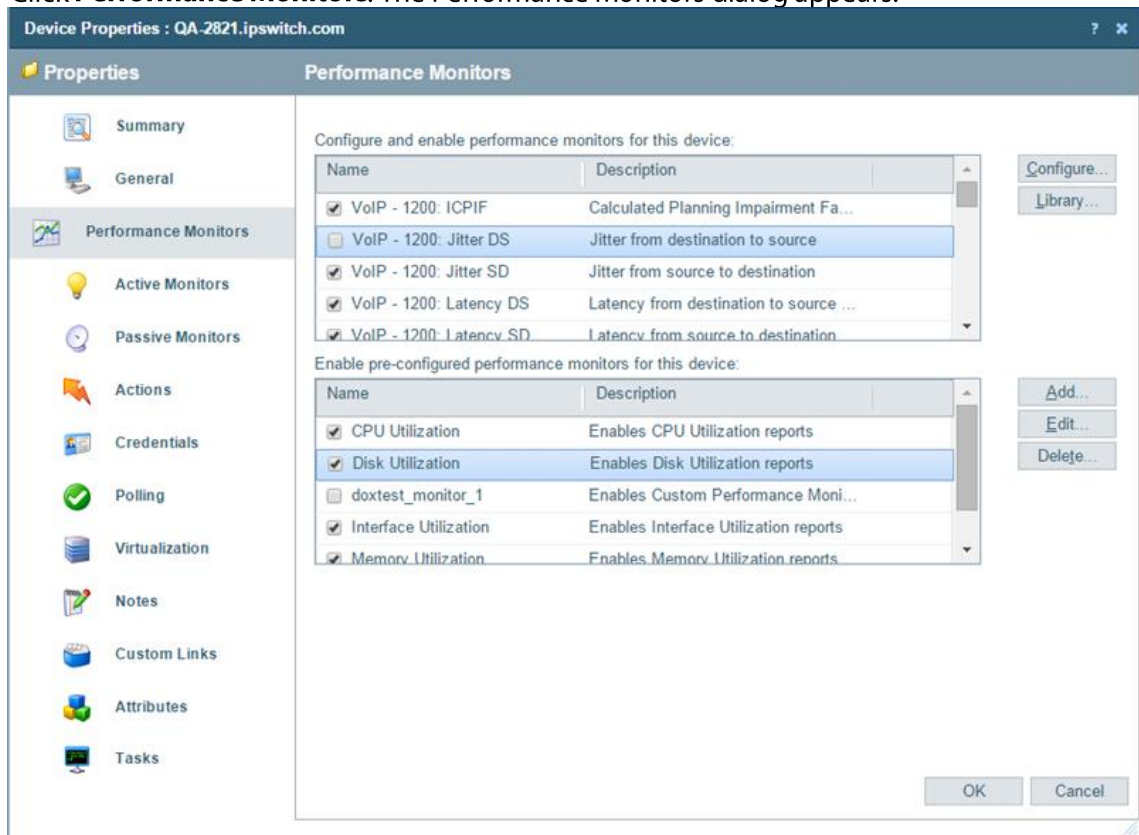
Click **Chart Properties** to launch a dialog where you can customize the look and feel of the chart to fit your needs. Additionally, as with all reports in WhatsUp Gold buttons are also available for accessing Device Properties and Device Status as well as exporting and emailing report data.

### Enabling and Disabling VoIP Performance Monitors

By default, each VoIP performance monitor set up during the installation is enabled and available to view from the VoIP dashboard view.

**To enable or disable a VoIP performance monitor:**

- 1 Access the Device Properties for the target device collecting VoIP performance monitor data.
- 2 Click **Performance Monitors**. The Performance Monitors dialog appears.



- 3 Select/deselect the performance monitors you want to enable/disable.
- 4 Click **OK**, then click **Close**.

### Adding Users to VoIP Dashboard Reports

To make the VoIP dashboard views available for other users, use the following instructions to copy the VoIP dashboard views to another user.

**To copy a dashboard view to another WhatsUp Gold user:**

- 1 Select Dashboard Views from the Admin tab to launch the Manage Dashboard Views dialog.
- 2 Click **Copy to**. The Copy To Dashboard View dialog appears. Enter the appropriate information into the following boxes:
  - **View name.** Enter a name for the dashboard view as it will appear in the Dashboard Library.
  - **Copy to user.** Select a user account from the list in which to copy the dashboard view.

- 3 Click **OK**.

### Setting Up the VoIP Active Monitor



The VoIP active monitor lets you set the acceptable Mean Opinion Score (MOS) threshold for an IP SLA device; so if the MOS threshold is exceeded, an alert is sent to notify the appropriate network manager about the issue.

There are two steps required to set up the VoIP active monitor:

- 1 *Set the preferred VoIP MOS threshold on the device in the Active Monitor Library.* (on page 13)
- 2 *Configure actions to notify network professionals when the VoIP MOS setting threshold exceeds the acceptable threshold.* (on page 13)

#### To set the VoIP MOS threshold options:

- 1 From the Active Monitor Library, select the VoIP monitor for which you want to set VoIP threshold option, and then click **Edit**. The VoIP Settings dialog appears.
- 2 Adjust the **Acceptable MOS (Mean Opinion Score)** threshold as needed.
- 3 Select one of the options to identify the:
  - **Check MOS values of all jitters configured on the device.** Select this option to include all of device RTT entries to check MOS performance thresholds.
  - **Only check MOS if tag (RTT Entry) contains.** You can limit device RTT entries that use this MOS performance threshold. Type all, or a portion, of the tag used to identify the source and destination devices.
- 4 Click **Advanced** to change the following options:
  - **Timeout (seconds).** Enter the amount of time (in seconds) you want the system to wait before failing the connection to the device.
  - **Retries.** Enter the number of times you want the computer to attempt to make the connection to the selected device before failing.
- 5 Click **OK**.

#### To configure an Action for the VoIP monitor on a specific device:

- 1 In the Device View list, right-click the VoIP device for which you want to configure an action, then click **Properties**. The Device Properties dialog appears.
- 2 Click **Active Monitors**, select the **VoIP Monitor** in the list of available monitors, then click **Edit**. The Active Monitor Properties for VoIP Monitor dialog appears.
- 3 Select the specific interface on the device to monitor, then click **Next**.
- 4 Use the subsequent dialogs to select or create the action policy or individual action(s) to apply to the VoIP Active Monitor, then click **Finish**.
- 5 Click **OK**.